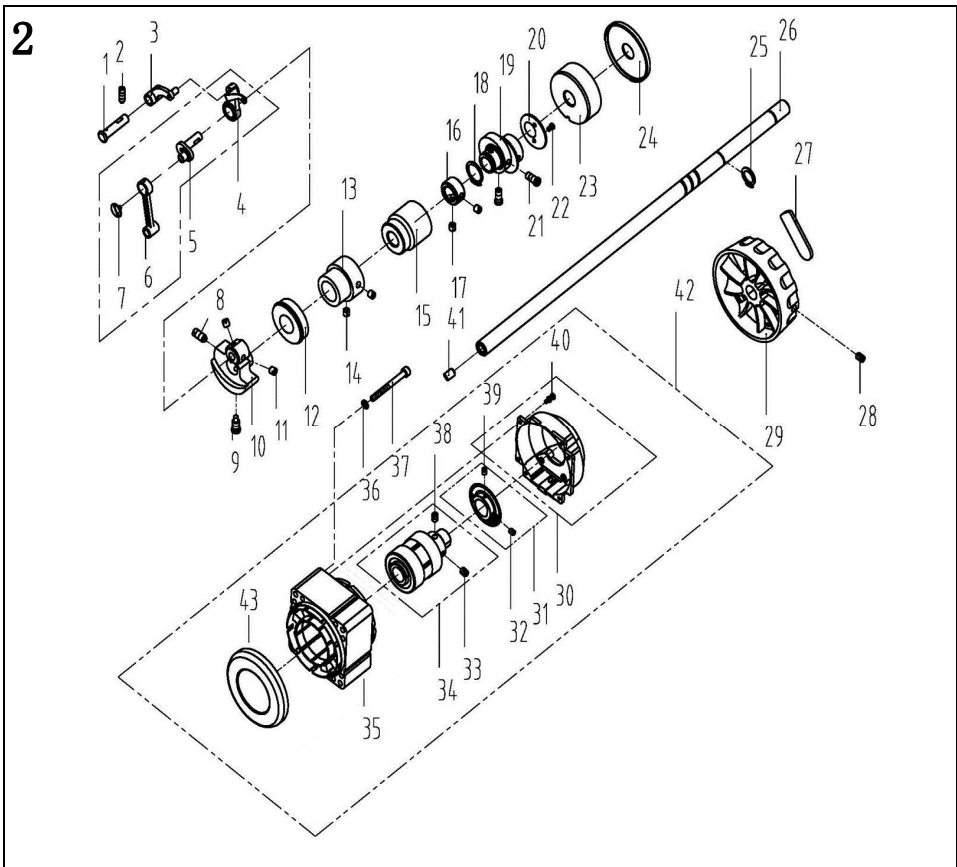


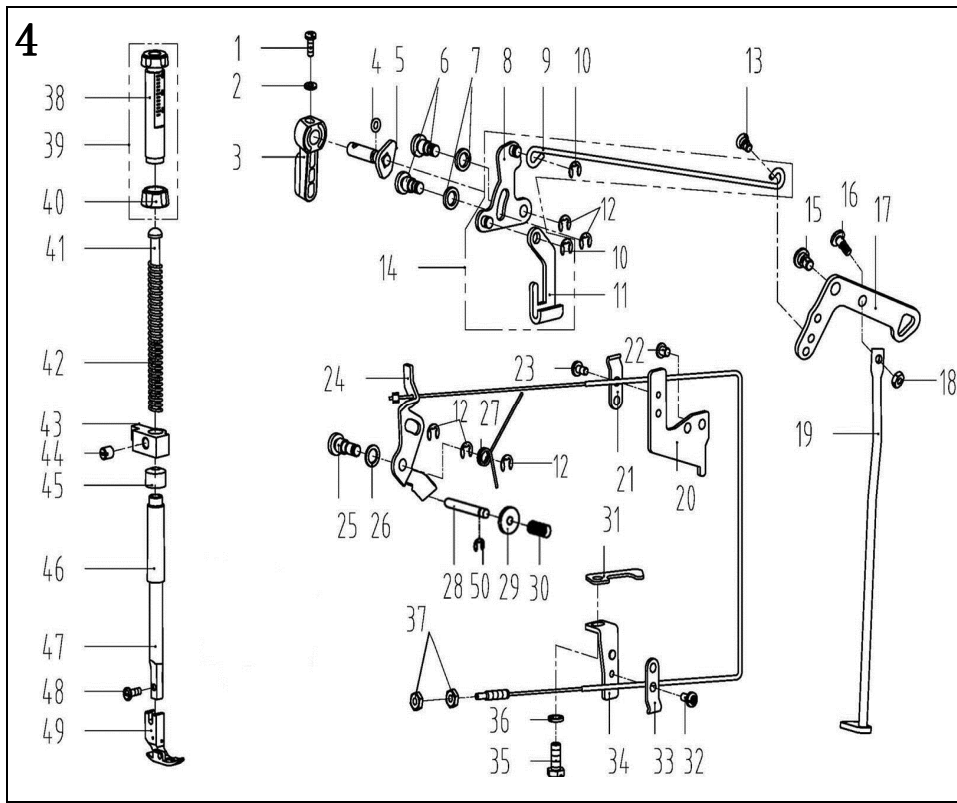
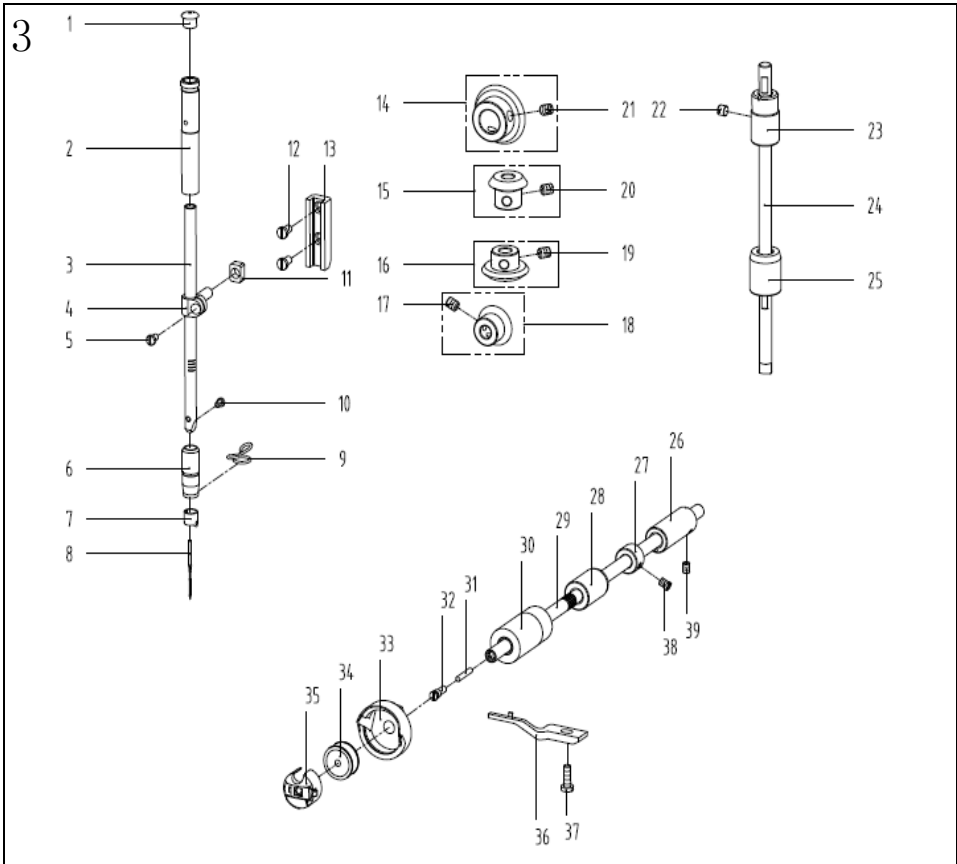
1. 机壳、外装分组件/Machine Frame & Miscellaneous Cover Components

序号NO.	公司件号	Part NO.	名称	PartName	零件描述	Description	数量	Number
1	101S11001		后侧板螺钉SM3/16"×28 L=9	Screw SM3/16"×28 L=9			3	
2	10122003		面板调节孔螺塞	Rubber plug			2	
3	13837002		面板板	Head card			1	
4	303919		面板 (喷漆)	Face plate asm			1	
5	13813005		左线轴	Thread guide left			1	
6	101S11007		右线轴螺钉SM11/64"×40 L=6	Screw SM11/64"×40 L=6			1	
7	12822006		面板垫圈	Face plate gasket			1	
8	1012013		针杆上衬套孔塞	Rubber plug			1	
9	10122005		线轴连杆销螺孔塞	Rubber plug			1	
10	10122004		针杆曲柄螺孔塞	Rubber plug			1	
11	101S11004		线轴杆护罩螺钉SM3/16"×28 L=7	Screw SM3/16"×28 L=7			1	
12	13812018		线轴杆的护罩	Thread take-up lever cover			1	
13	101S11004		线轴杆护罩螺钉SM3/16"×28 L=7	Screw SM3/16"×28 L=7			1	
14	13512004		三孔线勾	3-hole thread guide			1	
15	10122005		线轴连杆销螺孔塞	Rubber plug			1	
16	114511015		刮线刀螺钉SM9/64"×40 L=6	Screw SM9/64"×40 L=6			2	
17	11419001		刮线刀	Knife			1	
18	20722002		油盖	Rubber plug			1	
19	13822001		操作屏孔塞	Rubber plug			2	
20	13822007		后盖板	Side plate gasket			1	
21	303496		后盖板 (喷漆)	Side plate			1	
22	101S11001		后盖板螺钉SM3/16"×28 L=9	Screw SM3/16"×28 L=9			11	
23	13812109		侧盖固定板	Fixed plate			1	
24	304010		螺钉M4×5.5	Screw M4×5.5			1	
25	H0518		卡箍3.5×1	Circlip 3.5×1			1	
26	138530007		侧盖螺钉	Screw			1	
27	11453001		螺栓 (内六角) M5×25	Screw M5×25			1	
28	114513001		直驱电机螺钉M5×20	Screw M5×20			3	
29	W01009		GB/T97.1-1985 垫圈 5	Washer 5			1	
30	13811031		一体机电控罩壳组件	Electronic control box			1	
31	12922015		橡皮圈	Rubber plug			1	
32	13826009		弹壳台销钉	Pin			1	
33	138505001		操作面板螺钉	Screw			2	
34	14011002		面板座 (亚克力)	Panel seat			1	
35	12833045		一体机电控罩壳组件	Control panel			1	
36	101S12001		底座支柱	Machine head stud			1	
37	10122006		送料调节器孔塞	Rubber plug			1	
38	10122007		下轴工艺孔塞	Rubber plug			1	
39	13822002		装饰板	Decorative article			1	
40	101S11004		螺钉	Screw			2	
41	1381300400		夹线器组件	Thread tension asm.			1	
42	138516013		小夹线器螺母	Thread tension nut			1	
43	11227001		小夹线弹簧	Thread tension spring			1	
44	11212004		小夹线板	Thread tension disk			2	
45	13810008		小夹线器螺柱	Thread tension post			1	
46	138508006		小夹线器固定螺钉SM3/16"×28 L=7	Screw SM3/16"×28 L=7			1	
47	13812066		过线板	Thread tension guide plate			1	
48	11322014		橡皮圈 (三孔)	Rubber plug			1	
49	1381300500		夹线器组件	Thread tension asm.			1	
50	138516013		夹线螺母	Thread tension nut			1	
51	10112007		夹线制动板	Thread disk rotating stopper			1	
52	10127002		夹线弹簧	Thread tension spring A			1	
53	10133002		夹线螺钉	Thread tension post			1	
54	10112006		松线板	Disk stopper			1	
55	10112005		夹线板	Thread tension disk			1	
56	10127001		夹线取簧	Thread take-up spring			1	
57	10103011		线轴调张器	Thread tension base			1	
58	101S15005		夹线器固定螺钉SM9/64"×40 L=5.5	Screw SM9/64"×40 L=5.5			1	
59	10122014		线轴调节器孔塞	Rubber ring			1	
60	10126030		松线钉	Tension release pin			1	
61	11413011		固定式螺线钉	Thread guide			1	
62	401S16001		螺母SM9/64"×40	Nut SM9/64"×40			1	
63	101S15010		左销轴钉SM15/64"×28 L=10.5	Screw SM15/64"×28 L=10.5			1	
64	10113004		右线轴	Thread guide right			1	
65	101S11007		右线轴螺钉SM11/64"×40 L=6	Screw SM11/64"×40 L=6			1	
66	1383002700		电子夹线器组件	Next less e-device			1	
67	207514007		后端固定螺钉M4×6	Screw M4×6			1	
68	101S11019		推板螺钉SM3/32"×56 L=2	Screw SM3/32"×56 L=2			2	
69	10127009		推板板	Slide plate spring			1	
70	10115002		推板	Slide plate			1	
71	104S17002		针板螺钉 (进口)	Screw SM11/64"×40 L=8.5			2	
72	12815001		针板1/8	Needle plate			1	
73	101S17002		针板螺钉 SM11/64"×40 L=6.4	Screw SM11/64"×40 L=6.4			2	
74	101S11040		穿布导向U螺钉 SM9/64"×40 L=5	Screw SM9/64"×40 L=5			2	
75	12812002		废料导向U	Waste material U			1	
76	12815001		辅助针板	Thread plate			1	
77	12812028		穿布下侧挡板	Blanking baffle			1	
78	12812026		穿布侧导向	Waste material			1	
79	101S11019		推板螺钉SM3/32"×56 L=2	Screw SM3/32"×56 L=2			2	
80	14112004		防油圈	Oil preventing plate			1	
81	14123001		防油圈槽	Oil cotton			1	
82	14011009		一体机电控后侧盖 (帕克克斯)	Side cover			1	



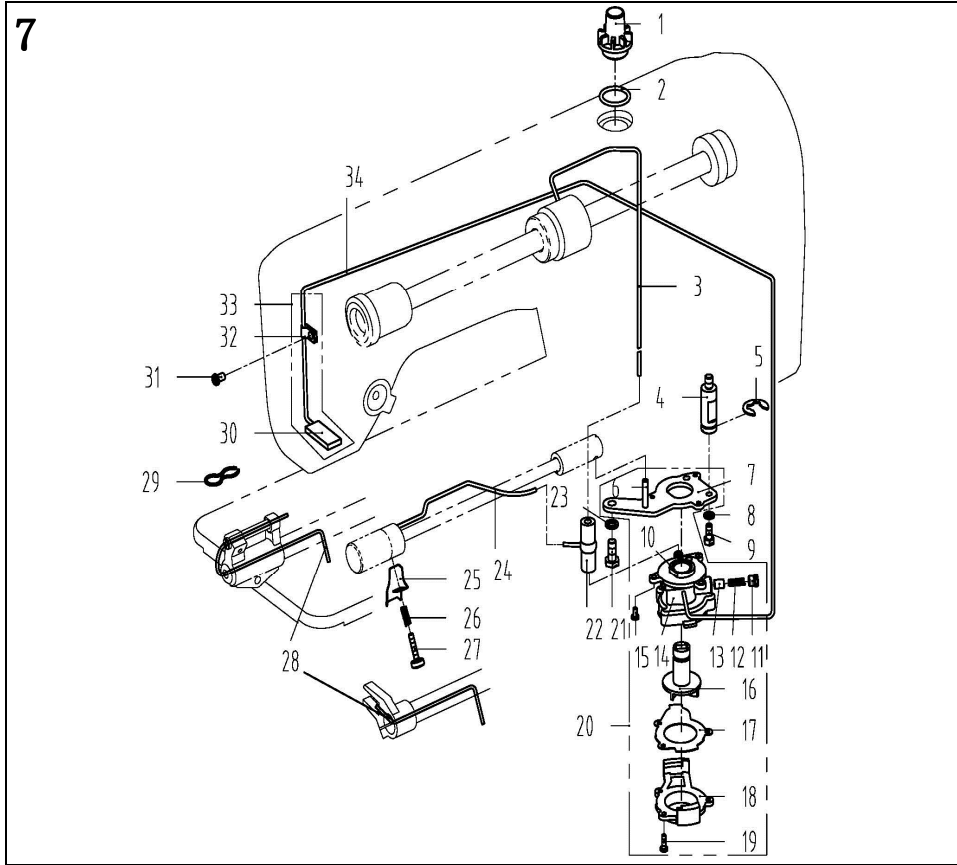
2. 上轴挑线分组件/Main Shaft & Thread Take-up Components

序号NO.	公司件号	Part NO.	名称	PartName	零件描述	Description	数量	Number
1	12226001		挑线连杆销	Thread take-up connecting rod pin			1	
2	101S15001		螺钉SM15x64"×28 L=15	Screw SM15x64"×28 L=15			1	
3	12205001		挑线连杆	Needle bar crank rod			1	
4	1220800100		挑线杆分组件	Thread take-up lever asm.			1	
5	1220402000		挑线曲柄	Needle bar crank rod			1	
6	12205002		针杆连杆组件	Needle bar crank rod			1	
7	101S17001		挑线曲柄螺钉 SM9/64"×40 L=6	Screw SM9/64"×40 L=6			1	
8	101S16004		针杆曲柄固定螺钉 SM9/32"×28 L=16	Screw SM9/32"×28 L=16			1	
9	101S11003		针杆曲柄定位螺钉SM9/32"×28 L=16	Screw SM9/32"×28 L=16			1	
10	12840001		针杆曲柄	Needle bar crank			1	
11	101S15002		送料轴挡圈螺钉SM1/4"×40 L=6	Screw SM1/4"×40 L=6			2	
12	B10003		轴承	Bearing			1	
13	12203001		上轴前盖	Main shaft front bushing			1	
14	S10009		螺钉	Screw			2	
15	12803005		主轴中轴套	Main shaft bushing mid			1	
16	10108001		主轴挡圈	Main shaft thrust collar			1	
17	101S14001		主轴中套轴圈螺钉	Screw			1	
18	H03002		挡圈20	Snap ring 20			1	
19	400095		送料偏心轮	Feed eccentric cam			1	
20	10112017		送料偏心轮盖板	Feed plate			1	
21	101S11013		送料偏心轮螺钉 SM1/4"×40 L=13	Screw SM1/4"×40 L=13			2	
22	113811003		护杆U螺钉 SM9/64"×40 L=5	Screw SM9/64"×40 L=5			2	
23	13803002		主轴衬套	Main shaft bushing back			1	
24	10121005		油封	Oil seal			1	
25	H03001		挡圈 (GB/T994.1-1986挡圈15)	Snap ring 15			1	
26	12802020		上轴	Main shaft			1	
27	13811021		手轮轴套	Handwheel table			1	
28	S10009		螺钉	Screw			2	
29	302830		手轮 (喷漆)	Handwheel			1	
30	1383300700		电机壳罩组件	Motor cover asm.			1	
31	1383300900		电机壳罩罩壳	Motor grating sensor asm			1	
32	GB/T77-2000		内六角平端固定螺钉M3×4	Screw M3×4			1	
33	GB/T77-2000		内六角平端固定螺钉M6×6	Screw M6×6			1	
34	1383300400		电机转子总成	Motor rotor			1	
35	13833003		电机定子总成	Motor stator			1	
36	GB/T90-1987		弹簧5	Spring washer 5			4	
37	GB/T70.1-2000		内六角圆柱头螺钉M5×50 8.8级	Screw M5×50 8.8			4	
38	GB/T78-2000		内六角端盖固定螺钉M6×8	Screw M6×8			1	
39	GB/T78-2000		内六角端盖固定螺钉M8×4	Screw M8×4			1	
40	GB/T9004.4.8		1/4"内六角小头螺钉组合件M3×8上	Screw			6	
41	10121012		上轴衬套	Bushin plug			1	
42	138330650		第一轴+23A充电伺服电机	Motor			1	
43	13811060		电机绝缘防护罩	Motor insulation shield			1	



4. 压料分组件/Presser Bar Components

序号NO.	公司件号	Part NO.	名称	PartName	零件描述	Description	数量	Number
1	101S11010		压脚板手螺钉SM9/64"×40 L=11	Screw SM9/64"×40 L=11			1	
2	10128002		压脚板手螺钉垫圈	Washer			1	
3	13811029		压脚板手	Hand lifter			1	
4	010104		O型圈	Rubber ring			1	
5	1381000200		压脚板手凸轮分部件	Hand lifter cam asm.			1	
6	101S20001		抬压脚杆螺线钉	Screw			2	
7	10128015		橡胶衬垫胶垫圈	Washer			2	
8	1381203000		抬压脚前杆杆分部件	Lift front lever component			1	
9	10112013		抬压脚拉杆	Race lifter pull rod			1	
10	H05003		GB/T896-1986挡圈 5	Snap ring			2	
11	10112010		压脚升降板	Lifting plate			1	
12	11329020		挡圈 5	Snap ring			5	
13	101S20004		抬压脚拉杆螺钉SM3/16"×32	Hinge Screw SM3/16"×32			1	
14	1381203200		抬压脚前杆杆组件	Race lifter lever asm			1	
15	101S20003		后杆杆轴销螺钉SM15/64"×28	Hinge screw SM15/64"×28			1	
16	138520003		抬压脚前杆轴销螺钉SM11/64"×40	Hinge Screw SM11/64"×40			1	
17	13812001		抬压脚后杆轴销	Race lifter back lever			1	
18	112514008		曲柄轴螺母SM11/64"×40	Nut SM11/64"×40			1	
19	1281202		抬压脚拉杆	Race lifter connecting rod			1	
20	11212009		松线导杆上支架	Wire release bracket upper			1	
21	11212008		松线导杆压板	Wire release press plate			1	
22	101S11004		挑线杆护罩螺钉SM3/16"×28 L=7	Screw SM3/16"×28 L=7			1	
23	113511004		松线导杆压板板螺钉M4×8	Screw M4×8			1	
24	114120000		松线板板板组件	Wire release plate asm			1	
25	101S20002		松线板板板板板	Wire release plate pin			1	
26	10128015		橡胶衬垫胶垫圈(厚)	Washer(H)			1	
27	11427009		松线板板板板板	Reset spring			1	
28	10128003		松线轴钉	Thread release supporting pin			1	
29	10128001		松线轴钉垫片	Washer			1	
30	10127003		松线轴钉弹簧	Spring			1	
31	10112022		松线供油管压板	Tube press plate			1	
32	113511004		松线导杆压板板螺钉M4×8	Screw M4×8			1	
33	11212008		松线导杆压板	Wire presser A			1	
34	10112001		松线导杆下支架	Wire release bracket lower			1	
35	116830003		松线导杆轴销螺钉SM15/64"×28 L=14.5	Screw SM15/64"×28 L=14.5			1	
36	H02004		弹性垫圈	Spring washer			1	
37	113512001		螺母 SM3/16"×32	Nut SM3/16"×32			2	
38	13811027		调压螺钉	Press regulating screw			1	
39	1381102700		调压螺钉组件	Presser regulating screw nut asm			1	
40	13811028		调压螺钉	Press regulating nut			1	
41	10102003		调压导杆	Press regulating guide bar			1	
42	11427003		调压套	Press regulating spring			1	
43	138090010		压杆导套	Presser bar guide bracket			1	
44	101S103007		抬压脚架螺钉 SM1/4"×40 L=8	Screw SM1/4"×40 L=8			1	
45	10121112		抬压脚油盖	Presser bar oil cover			1	
46	01010302		压杆打套	Presser bar bushing,lower			1	
47	12802002		压杆	Presser bar			1	
48	101S11009		抬压脚螺钉 SM9/64"×40 L=10.5	Screw SM9/64"×40 L=10.5			1	
49	1281600200		抬压脚部件2(1/8")	Pressor foot asm			1	
50	H05012		挡圈4(1号)	Snap ring			1	

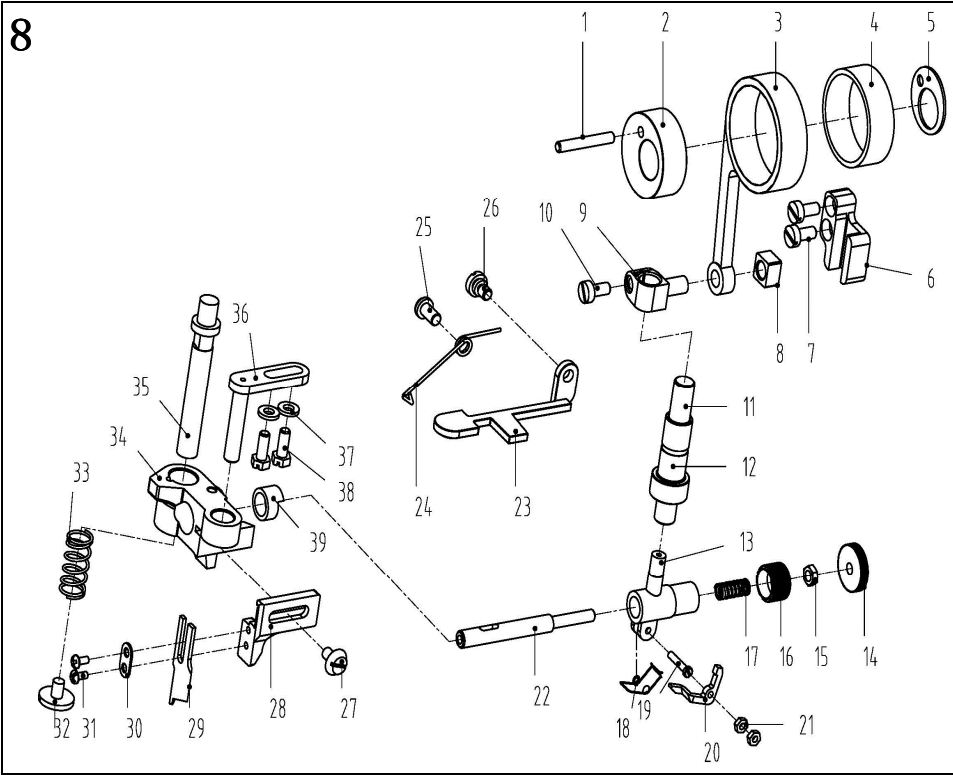


7. 润滑组件/Oil Lubrication Components

序号NO.	公司件号	Part NO.	名称	PartName	零件描述	Description	数量	Number
1	11211004		油窗		Oil sight window		1	
2	10122019		油窗O形圈		Bulber ring		1	
3	14121001		主轴供油管		Main shaft oil tube		1	
4	11250005		油泵连接螺栓		Oil pump connecting stud		1	
5	11329010		开口挡圈10		Shap ring 10		1	
6	10121001		下轴供油管		Hook driving shaft oil tube		1	
7	10112020		油泵安装板		Oil pump installing base		1	
8	W03002		弹簧		Spring *ashor		1	
9	209512001		压脚螺钉SM11/64" × 40 L=10.5		Screw SM11/64" × 40 L=10.5		1	
10	10103022		油泵体衬套		Oil pump bushing		1	
11	101S0007		柱塞螺钉		Plunger Screw		1	
12	10127013		柱塞簧		Plunger spring		1	
13	10122018		同轴衬套		Plunger		1	
14	10120001		油泵体		Oil pump		1	
15	S04005		油泵螺钉		Screw		1	
16	10111003		油泵叶轮		Oil pump impeller		1	
17	10112021		油泵叶轮衬板		Oil pump impeller cover		1	
18	10111007		油泵盖		Lubricating oil pump cover		1	
19	101S0006		螺钉		Screw		3	
20	101200010		油泵分部件		Lubricating oil pump component		1	
21	116S0003		拍牙叉固定螺钉SM15/64" × 28 L=14.5		Screw SM15/64" × 28 L=14.5		1	
22	10136001		供油管接头		Bulber joint		1	
23	W021004		GB/T93-1987弹簧M6		Spring Washer M6		1	
24	1381015		供油管		Hook oil tube		1	
25	11312031		挡油罩		Oil shield cover		1	
26	13827014		油量调节螺钉弹簧		Spring		1	
27	113S0001		油量调节螺钉		Screw		1	
28	10423005		油线		Oil wick		1	
29	10127015		同轴毡套		Oil felt clamp		1	
30	10123005		同轴毡套		Oil felt felt		1	
31	101S14004		橡胶杆衬套螺钉SM3/16" × 28 L=7		Screw SM3/16" × 28 L=7		1	
32	10112023		同轴管夹		Oil tube clamp		1	
33	10121007		同轴管部件		Oil return tube component		1	
34	10121008		同油管		Oil return tube		1	

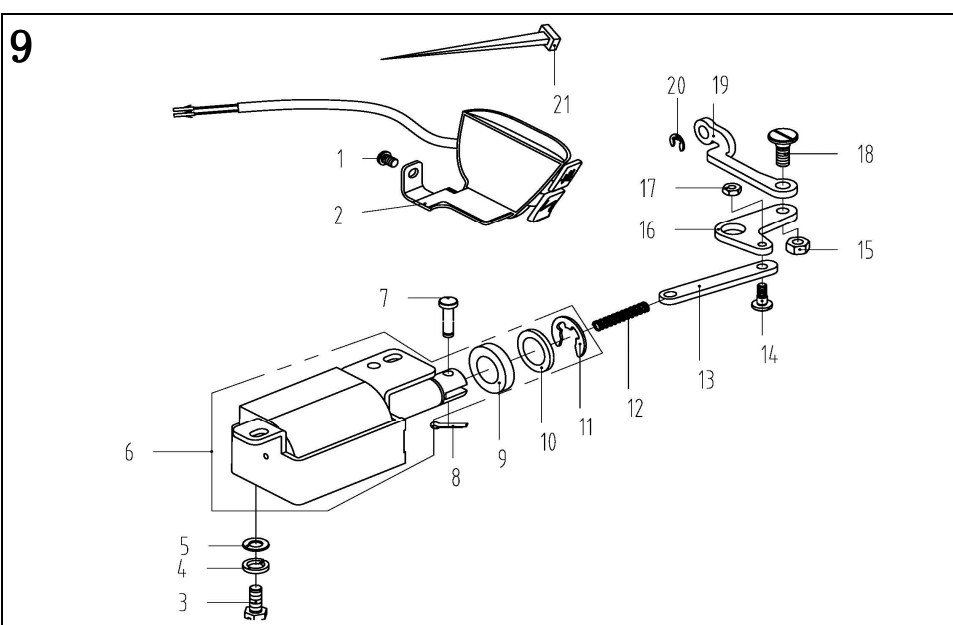
6. 切线装置部件/Thread Trimmer Components

序号NO.	公司件号	Part NO.	名称	PartName	零件描述	Description	数量	Number
1	113S15002		定刀调节螺钉SM1/8" × 4 L=9.5		Screw SM1/8" × 4 L=9.5		1	
2	11319001		定刀		Secant knife		1	
3	113S17001		螺钉SM9/64" × 40		Screw SM9/64" × 40		1	
4	11312003		护针片		Needle guard patch		1	
5	201S11009		螺钉SM9/64" × 40 L=5.5		Screw SM9/64" × 40 L=5.5		1	
6	113S11001		螺钉SM11/64" × 40 L=12		Screw SM11/64" × 40 L=12		2	
7	10128005		牙架座螺钉垫圈		Washer		2	
8	1381203100		刀架压板组件		Knife bracket press component		1	
9	13812001		刀架压板		Knife bracket press		1	
10	13800012		短套		Short bushing		2	
11	113S17002		活动刀固定螺钉SM11/64" × 40 L=4.4		Screw SM11/64" × 40 L=4.4		1	
12	11319002		活动刀		Motorial knife		1	
13	113107001		切线刀架		Knife bracket		1	
14	113S20001		连杆螺钉SM11/64" × 40		hinge Screw SM11/64" × 40		2	
15	11312005		连杆		Connecting rod		1	
16	114S16004		螺母SM11/64" × 40		Nut SM11/64" × 40		1	
17	11314001		曲柄		Crank		1	
18	11312001		驱动曲柄止动块		Crank driver stopper block		1	
19	S05004		螺钉M5 × 14		Screw M5 × 14		1	
20	11312001		弹簧		Spring		1	
21	11213004		14孔接线器		Plug		1	
22	11213005		电线插针		Pin		1	
23	12810008		切线插套		Thread cutting shaft bushing		1	
24	11510305		驱动曲柄轴衬套		Crank drive shaft bushing		1	
25	113S14002		螺钉SM11/64" × 40 L=5.5		Screw SM11/64" × 40 L=5.5		1	
26	11312002		弹簧盖		Spring cover		1	
27	11312002		弹簧		Spring		1	
28	12802015		切线凸轮曲柄轴		Crank shaft		1	
29	101S14001		上轴中套挡圈螺钉		Screw SM1/4" × 40 L=6		1	
30	116S14005		螺钉SM1/4" × 40 L=10		Screw SM1/4" × 40 L=10		2	
31	113109000		凸轮销柱		Push rod		2	
32	11310004		凸轮		Cam		1	
33	11314001		滚柱		Rolling pin		1	
34	113S16002		螺母SM11/64" × 40		Nut SM11/64" × 40		1	
35	1131400500		切线驱动组件		Thread trimmer drive asm.		1	
36	11310002		轴		Shaft		1	
37	11312001		驱动曲柄止动块		Positioning block		1	
38	105013		GB/T896-1986挡圈		Shap ring		1	
39	10112003		针杆曲柄护板		Center *right protecting		1	
40	11312003		电磁铁缓冲片		Solenoid cushon rubber		1	
41	11310001		切线电磁铁线圈		Solenoid pin		1	
42	101S11026		油泵安装螺钉SM15/64" × 28 L=9		Screw SM15/64" × 28 L=9		1	
43	11312006		切线磁铁支架		Solenoid bracket		1	
44	N01005		螺母 M4		Nut M4		2	
45	W021005		GB/T93-1987弹簧垫圈		Washer		1	
46	112S16008		螺母SM1/4" × 40		Nut SM1/4" × 40		1	
47	001004		O形圈		Bulber ring		1	
48	1383003300		切线电磁铁组件		Thread trimmer solenoid asm.		1	
49	11312002		弹簧		Spring		1	
50	11312007		松线座		Thread release bed		1	
51	113S20002		螺钉SM1/4" × 28		Screw SM1/4" × 28		1	



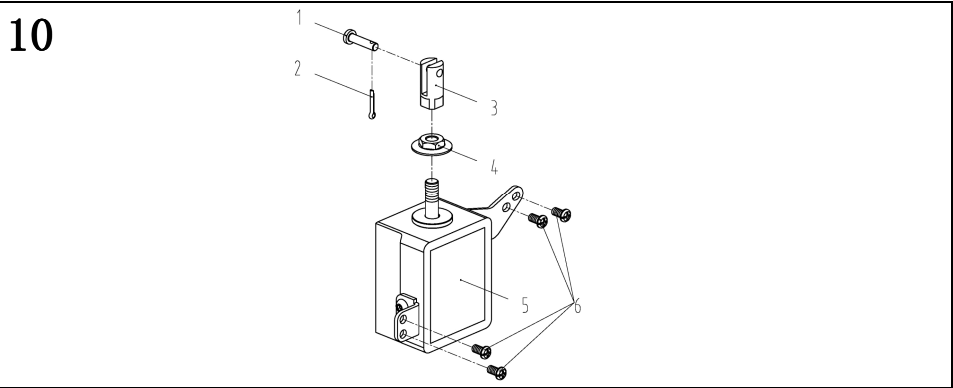
8. 切刀专用部件 Knife Components

序号NO.	公司件号	Part NO.	名称	PartName	零件描述	Description	数量	Number
1	12726001		切刀凸轮销		Pin		1	
2	12719002		切刀凸轮		Knife cam		1	
3	12705003		切刀连杆		Knife connecting rod		1	
4	1272400100		切刀连杆轴承		Knife connecting rod bearing		1	
5	12812005		切刀凸轮盖板		Cover plate		1	
6	12809001		切刀滑块导轨		Slide holek guide rail		1	
7	101S11008		滑块导轨螺钉 SM11/64" × 40 L=8		Screw SM11/64" × 40 L=8		2	
8	12809002		切刀滑块		Slide holek		1	
9	12804002		切刀轴连接柱		knife driving stud connection asm		1	
10	209S11009		止摆孔头螺钉 SM9/64" × 40 L=9.5		Screw SM9/64" × 40 L=9.5		1	
11	12802006		切刀轴 (O.L.C)		Knife shaft		1	
12	12803001		切刀轴衬套		Bushing		1	
13	12804003		切刀离合支架		knife driving rod clutch bracket		1	
14	12811001		切刀离合销底座		Knob		1	
15	201S16003		N03螺母		Nut		1	
16	12801002		切刀离合销盖		Cap		1	
17	12827004		切刀离合销盖		Spring		1	
18	12827002		切刀离合销盖		Spring		1	
19	12826002		切刀离合销盖		Pin		1	
20	12805001		切刀离合销		Knife release rod		1	
21	N01018		GB/T6170-1986六角螺母		GB/T6170-1986M2.5 Nut M2.5		2	
22	12826001		切刀离合销		Knife driving rod clutch pin		1	
23	12812001		切刀座下压手柄		Knife bed component pull down handle		1	
24	12827008		扭簧		spring		1	
25	128S11001		底板螺钉		Screw SM3/16" × 28 L=14		1	
26	128S20005		切刀手柄轴螺钉SM11/64" × 40		Axial Screw SM11/64" × 40		1	
27	128S17001		切刀架螺钉 SM11/64" × 40 L=8		Screw SM11/64" × 40 L=8		1	
28	12801004		切刀架		Knife bracket		1	
29	12819001		上切刀		Knife		1	
30	12812006		上切刀压板		Press plate		1	
31	101S11027		螺钉 SM1/8" × 44 L=6		Screw SM1/8" × 44 L=6		2	
32	101S11023		送料调节器轴螺钉SM3/16" × 28 L=6.5		Screw SM3/16" × 28 L=6.5		1	
33	12827007		切刀床架位置		Spring		1	
34	12801010		切刀床部件		Knife bed component		1	
35	12802021		切刀轴套 (O.L.C)		Knife bed shaft		1	
36	12805004		切刀轴套 (O.L.C)		Knife bed guide rod		1	
37	12829001		切刀轴套 (O.L.C)		Bushin		2	
38	209S12001		切刀轴套 (O.L.C)		Screw SM11/64" × 40 L=8		2	
39	12803003		切刀床部件右套		Knife bed component bushing right		1	



9. 自动倒送料开关组件/Automatic Reverse Feed Components

序号NO.	公司件号	Part NO.	名称	PartName	零件描述	Description	数量	Number
1	101S11004		橡胶杆衬套螺钉SM3/16" × 28 L=7		Screw SM3/16" × 28 L=7		1	
2	1283000900		双开组件		Auto reverse feed switch asm		1	
3	116S30003		拍牙叉固定螺钉SM15/64" × 28 L=14.5		Screw SM15/64" × 28 L=14.5		2	
4	W02004		GB/T93-1987弹簧垫圈		Spring washer M6		2	
5	11628005		拍牙叉固定垫圈		Washer		2	
6	1383000400		自动倒送料电磁铁		Auto reverse feed solenoid		1	
7	13826004		销子		Shap ring		1	
8	104001		开口销 GB/T91 2×14		Cotter pin		1	
9	11322040		橡胶垫片		Washer		1	
10	11328001		垫片		Shap ring		1	
11	105014		GB/T896-1986开口挡圈		Plunger spring		1	
12	11227006		自动倒送料连杆弹簧		Auto reverse feed connecting rod		1	
13	13812004		自动倒送料连杆		hinge Screw SM11/64" × 40		1	
14	112S20002		曲柄长螺母SM11/64" × 40		Nut SM1/4" × 28		1	
15	112S16007		曲柄长螺母SM11/4" × 28		Auto reverse feed crank		1	
16	11204003		自动倒送料曲柄		Nut SM11/64" × 40		1	
17	112S16008		曲柄短螺母SM11/64" × 40		Hinge Screw SM1/4" × 28		1	
18	112S20001		曲柄长螺钉 SM1/4" × 28		Auto reverse feed pull shaft		1	
19	11212029		自动倒送料拉杆		Auto reverse feed pull shaft		1	
20	14029003		轴用弹性挡圈(700, 8mm)		Shap ring 7		1	
21	11211005		尼龙扎带		Cable band		1	



10 自动抬压脚组件/Auto Lifter Components

序号NO.	公司件号	Part NO.	名称	PartName	零件描述	Description	数量	Number
1	11326006		销子		Pin		1	
2	104001		开口销 GB/T91 2×14		Cotter pin		1	
3	11326006		电磁铁接头		Solenoild connector		1	
4	113S16004		法兰螺母M8		Flange nuts M8		1	
5	1413001300		电磁铁组件		Solenoid asm.		1	
6	101S11001		后盖板螺钉SM3/16" × 28 L=9		screw SM3/16" × 28 L=9		4	