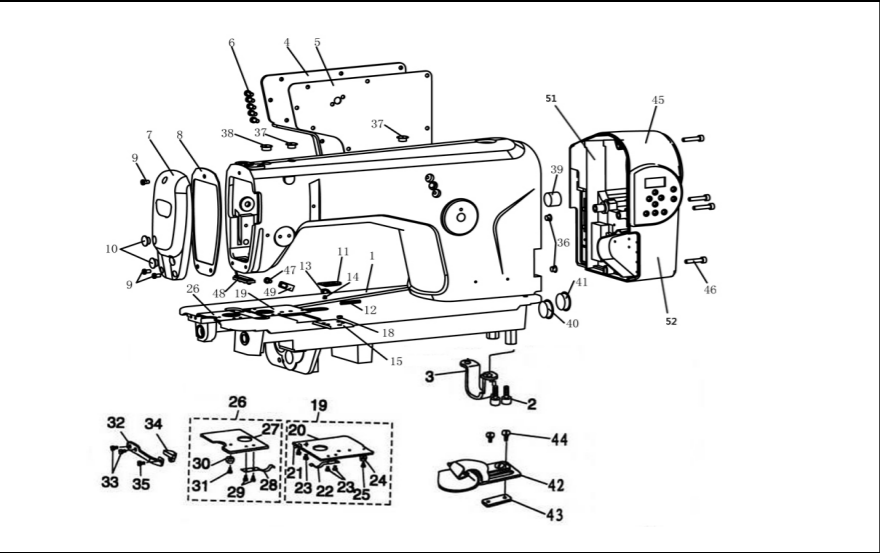


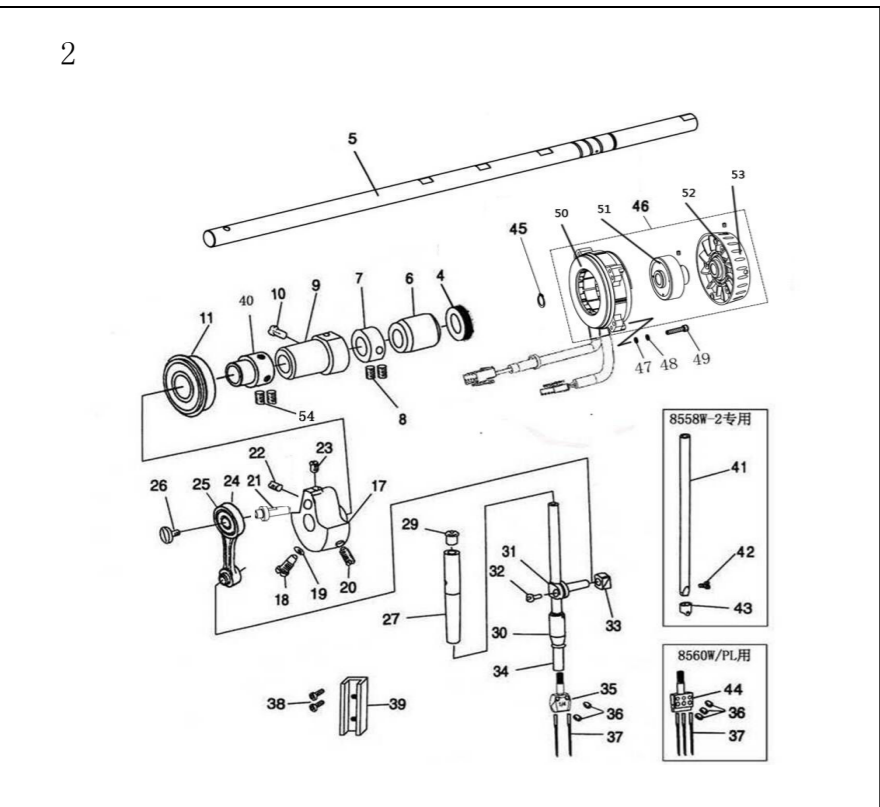
8558G/8560G系列

链式平缝机系列产品
Chainstitch lockstitch sewing machine



一、机壳分组件 Arm bed components

序号NO.	公司件号	Part NO.	名称	PartName	零件描述	Description	数量	Number
1	1250001		机壳总成	arm bed complete			1	
2	11651002		机壳固定螺钉	bed screw stud			2	
3	12512001		机壳固定板	bed support			1	
4	300972		固定板	slide plate			1	
5	12522001		固定板垫圈	gasket			1	
6	101S11001		固定板螺钉	slide plate screw			9	
7	300973		固定板垫片	face plate asm			1	
8	12822001		固定板	face plate gasket			1	
9	101S11001		固定板螺钉	screw			3	
10	10122003		固定板固定孔盖	rubber plug			2	
11	12515001		机壳固定板	cam cover latch			1	
12	12527001		机壳固定板弹簧	spring			4	
13	12512002		机壳固定板弹簧垫圈	spring suspension			1	
14	12511004		机壳固定板固定板	screw			1	
15	12515002		机壳固定板	attachment installing plate			1	
16	12515008		机壳固定板	screw			1	
17	125150030		机壳固定板	cam cover asm			1	
20	12515008		机壳固定板(1/4" 1/8" 3/16" 1/2" 3/4")	cam cover (8558W-1/4", 8560W-1/8", 8560W-3/16", 8560W-1/2", 8560W-3/4")			1	
20	12515011		机壳固定板(8558W-3/8", 8560W-PL)	cam cover (8558W-3/8", 8560W-PL)			1	
20	12515001		机壳固定板(8560W-1/8")	cam cover (8560W-1/8")			1	
21	12512004		机壳固定板	cam cover			1	
22	12512005		机壳固定板	spring			1	
23	101S11019		机壳固定板螺钉	screw			4	
24	12515006		机壳固定板	cam cover guide			1	
25	201S11002		机壳固定板螺钉	screw			1	
26	125150050		机壳固定板	bed slide asm			1	
27	12515002		机壳固定板	bed slide			1	
28	12512006		机壳固定板	spring			1	
29	101S11019		机壳固定板螺钉	screw			2	
30	12515006		机壳固定板	bed slide guide			1	
31	201S11002		机壳固定板螺钉	screw			1	
32	12512007		机壳固定板	bed slide lock spring			1	
33	101S11004		机壳固定板螺钉	screw			2	
34	12509001		机壳固定板	latch			1	
35	101S11027		机壳固定板螺钉	screw			1	
36	12522006		机壳固定板固定板	rubber plug			2	
37	10122016		机壳固定板固定板	rubber plug			1	
38	10122004		机壳固定板固定板	rubber plug			1	
39	12522022		机壳固定板固定板	rubber plug			1	
40	12522003		机壳固定板固定板	rubber plug			1	
41	12522004		机壳固定板固定板	rubber plug			1	
42	1251201000		机壳固定板固定板	folder			1	
42	1251208200		机壳固定板固定板(8558W-1/8", 8560W-PL)	folder (8558W-1/8", 8560W-PL)			1	
42	1251208400		机壳固定板固定板(1/2", 3/8")	folder (3/8")			1	
42	1251208300		机壳固定板固定板(1/2", 3/8")	folder (3/16")			1	
43	12512013		机壳固定板固定板	gasket			1	
44	125S11006		机壳固定板固定板	screw			2	
45	10133100		机壳固定板固定板	electronic control module			1	
46	10133106		机壳固定板固定板	electronic control module			1	
47	11S13012		机壳固定板固定板	screw			4	
47	101S11008		机壳固定板固定板	screw			5	
48	10230011		机壳固定板固定板	rod 1mm			1	
48	12612014		机壳固定板固定板	rod 1mm			3	
49	12512054		机壳固定板固定板	clamp			1	
51	95100013		机壳固定板固定板	thread 1 board			1	
52	95111003		机壳固定板固定板	screw			1	



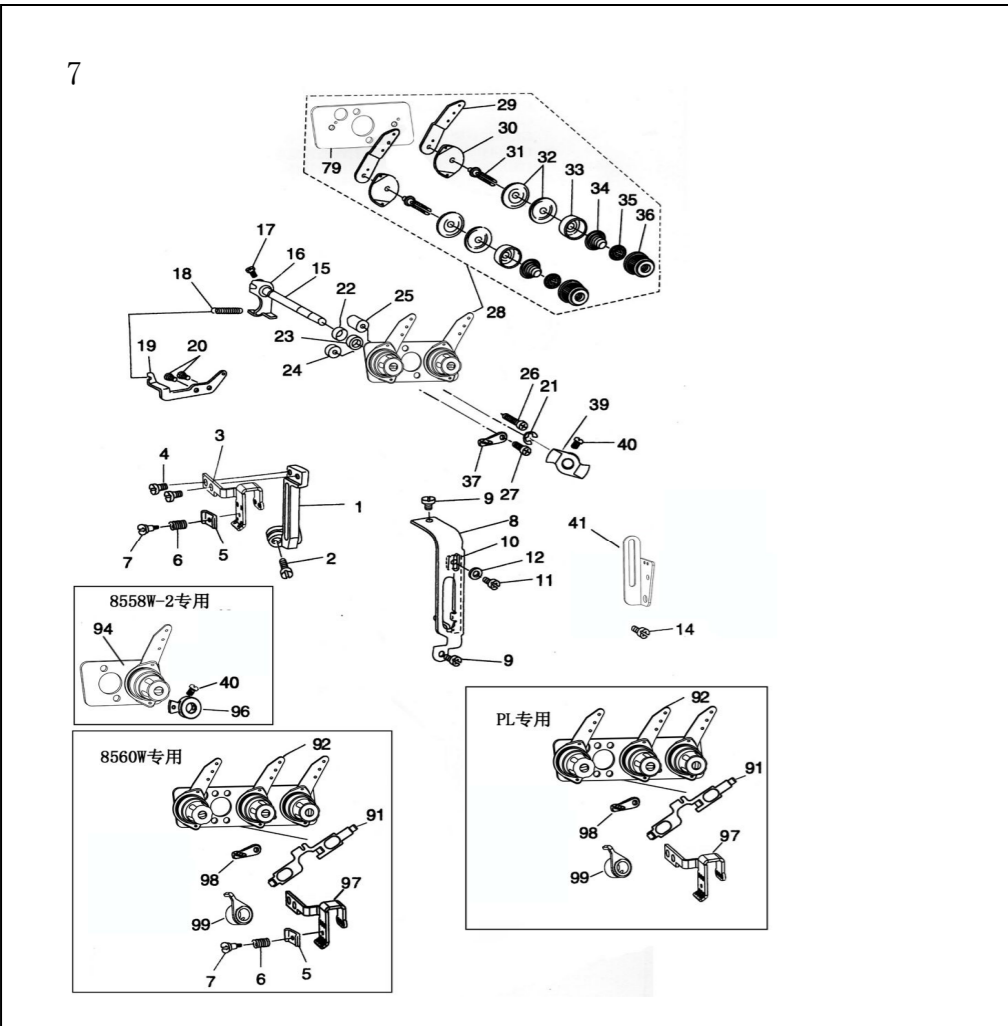
零件手册 Parts Manual

二、上轴针杆分组件 Main shaft & needle bar components

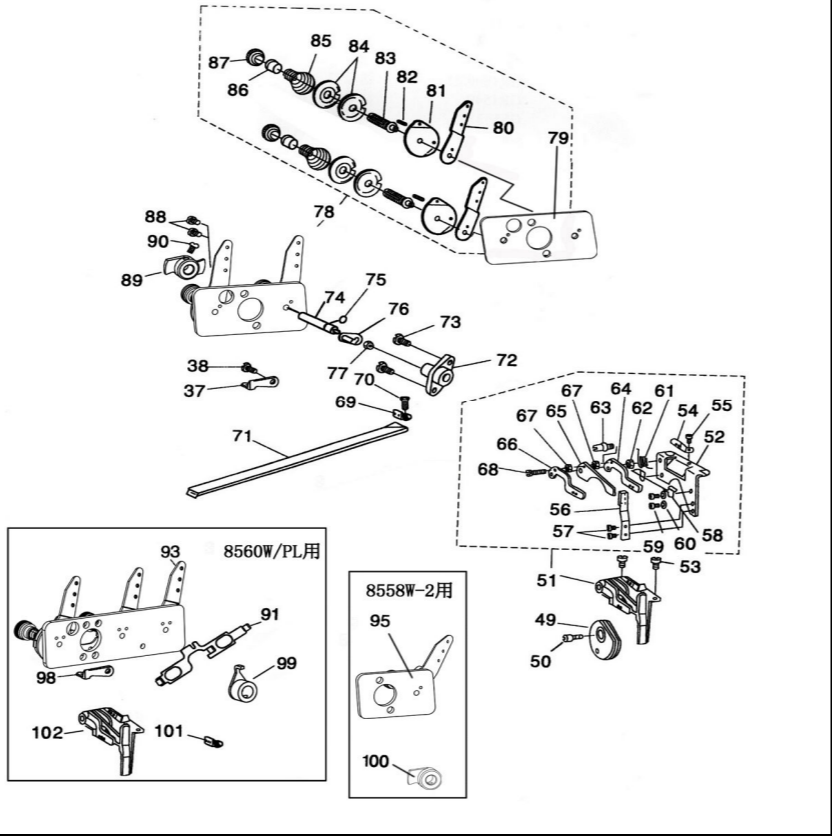
序号NO.	公司件号	Part NO.	名称	PartName	零件描述	Description	数量	Number
4	125220000		上轴针杆组件	main shaft oil seal asm			1	
5	12502020		上轴	main shaft			1	
5	12502006		上轴	main shaft			1	
6	125030050		上轴后轴套	main shaft bushing rear			1	
7	10148001		上轴轴套	main shaft thrust collar			1	
8	101S11007		上轴轴套螺钉	screw			2	
9	12503004		上轴中间轴套	main shaft bushing intermediate			1	
10	101S11006		上轴中间轴套螺钉	screw			1	
11	010003		轴承600425	bearing 600425			1	
12	101220012		上轴孔套	roller felt			1	
13	12502028		曲柄针杆调整销	crank oil adjustment pin			1	
15	125220024		曲柄针杆调整衬套	bushing bushing			1	
16	125220025		曲柄针杆调整衬套螺母	2-bushing ring			1	
17	12504001		针杆曲柄	counterweight asm			1	
18	101S11003		针杆曲柄固定螺钉	screw			1	
19	001472		针杆曲柄固定衬套	bushing ring			1	
20	101S11004		针杆曲柄固定螺钉	screw			1	
21	12504003		针杆及针轴	needle crank			1	
22	101S11002		针杆及针轴紧固螺钉	screw			1	
23	101S11002		针杆及针轴螺母	screw			1	
24	1250501000		针杆及针轴件	needle bar crank rod asm			1	
25	000000		针杆及针轴套	needle roller bearing			1	
26	101S117001		针杆及针轴左螺母	left wrist screw			1	
27	12503009		针杆上衬套	needle bushing upper			1	
29	101220013		针杆上衬套孔套	bushing ring			1	
30	10148023		针杆下衬套	needle bar bushing lower			1	
31	10120002		针杆连接套	needle bar connection asm			1	
32	101S11005		针杆曲柄固定螺钉	screw			1	
33	10148001		针杆及针轴滑块	crank slide block			1	
34	12502002		针杆	needle bar			1	
35	12504001		针夹(1/4")	needle clamp (1/4")			1	
35	12504002		针夹(1/8")	needle clamp (1/8")			1	
35	12504004		针夹(3/8")	needle clamp (3/8")			1	
35	12504003		针夹(1/2")	needle clamp (1/2")			1	
35	12504006		针夹(850M-2)	needle clamp (850M-2)			1	
36	125011007		支撑螺钉	screw			2	
37	12617005		衬套	needle			1	
38	101S11008		垫块定位螺母	screw 30x11 4x40 1-8			2	
39	10100003		针杆针轴衬套螺母衬套	needle bar nut			1	
40	125200100		上轴衬套	main shaft bushing			1	
41	125200035		针杆(850M-2)	needle bar			1	
42	101S11006		支撑螺钉	screw			1	
43	10113002		针杆线钩	needle bar frame thread			1	
44	12604002		针夹(1/8")	needle clamp (1/8")			1	
44	12604001		针夹(PL)	needle clamp (PL)			1	
45	0003001		下盖	noise stator			1	
46	10111007		电机组件	noise rotor			1	
47	12628013		垫圈	washer			3	
48	000002		弹性垫圈	washer			3	
49	11521001		衬套	screw			4	
50	125200035		针子	noise components			1	
51	125200010		针子	noise components			1	
52	10117001		螺母	nut			2	
53	1003500		衬套	roller			1	
54	1100009		螺母	screw			2	

六、弯针勾线分组件 Looper thread retainer components

序号NO.	公司件号 Part NO.	名称 PartName	零件描述 Description	数量 Number
1	10125004	下轴套轴帽	gear,asm	1
2	10125003	轴帽上卡套垫	pinion,asm	1
3	12503021	轴帽上轴套	bushing,upper	1
4	1250302200	轴帽下轴套组件	bushing,lower	1
5	101515001	螺帽加套螺母	screw	2
6	10125003	螺帽下卡套垫	gear,asm	1
7	12502007	螺母	nut	1
8	101515007	半齿套螺母	bushing,front,asm,screw	4
9	12525001	下轴套套帽	gear,asm	1
10	12502008	下轴	lower shaft,asm	1
11	12503025	下轴后轴套	bushing, rear	1
12	101515010	下轴后轴套螺母	screw	1
14	1250302600	下轴中间轴套组件	bushing, intermediate	1
15	101515001	下轴中间轴套螺母	screw	1
16	12508005	下轴衬圈	thrust collar,asm	1
17	101515007	下轴衬圈螺母	screw	2
18	1250303200	下轴轴套组件	bushing, front	1
19	101515001	下轴轴套螺母	screw	1
20	125030346	下轴轴套轴套螺母	looper thread guard bushing	1
21	1250200700	下轴轴套轴套螺母	lower thread guard bushing,asm	1
22	12502009	轴杆轴	lower rocker shaft	1
23	1250302600	轴杆轴后轴套组件	bushing, intermediate	1
24	101515010	轴杆轴后轴套螺母	screw	1
25	1250303800	轴杆轴套轴套组件	bushing, front	1
26	101515001	轴杆轴套轴套螺母	screw	1
27	12508005	轴杆轴衬圈	thrust collar,asm	1
28	101515007	轴杆轴衬圈螺母	screw	2
29	12502002	上轴弯针齿板	gear,asm,upper	1
30	101515007	上轴弯针齿板螺母	screw	2
31	12502003	新齿弯针齿板	gear,asm,lower	1
32	101515007	新齿弯针齿板螺母	screw	2
33	12504009	轴杆曲柄	looper crank,asm	1
34	101515007	轴杆曲柄螺母	screw	2
35	125030098	轴杆曲柄轴套螺母	screw	1
36	1250402100	轴杆摆架十字接头组件	frambion,asm	1
37	1250201000	轴杆摆架组件	looper rocker shaft,asm	1
38	209S11009	轴杆摆架盖帽	screw	4
39	10123004	油线	oil wick	1
41	12501005	轴杆架座	looper mounting base	1
42	12501001	轴杆架座螺母	screw	4
43	12503042	轴杆摆架轴套	bushing, rear	2
44	101515006	轴杆摆架轴套螺母	screw	2
45	12504012	左弯针 曲柄	looper holder,asm(left)	1
47	12517004	右弯针	looper(right)	1
48	209S11012	轴杆摆架	screw	4
49	12504013	右弯针 曲柄	looper holder,asm, (right)	1
50	101511016	轴杆曲柄螺母	screw	2
51	12517002	右弯针	looper(right)	1
52	1251202200	轴杆曲柄盖壳组件	crank cover,asm	1
53	125011007	曲柄盖壳螺母	screw	3
54	6R1462	曲柄盖壳孔盖	Rubber plug	1
55	12521002	PE3820 软管头3	vinyl tube	1
56	12510005	针杆凸轮	needle guard cam,asm	1
57	101515007	针杆凸轮螺母	screw	2
58	12505007	针杆盖帽	needle guard crank rod	1
59	12504014	针杆支板螺母	row tensile guard rocker fork	1
60	101511020	针杆支板曲柄螺母	screw	1
61	12526014	针杆曲柄销	pin	1
62	10123004	油线	oil wick	1
63	101515006	针杆曲柄前螺母	screw	1
64	12503043	针杆轴套	bushing	1
65	101515010	针杆轴套螺母	screw	1
66	12502012	针杆轴	needle guard driving shaft,asm	1
67	10128008	针杆轴油线	oil wick	1
68	12504015	针杆曲柄	row needle guard rocker,asm,asm	1
69	101511016	针杆曲柄螺母	screw	1
70	12517003	驱动针杆 (R558W-1/1/8", 3/8", 3/16")	driving needle guard(R558W-1/8", 1/8", 3/8", 3/16")	1
71	12517009	驱动针杆 (R558W-2)	driving needle guard(R558W-2)	1
72	12517010	驱动针杆 (R558W-3)	driving needle guard(R558W-3)	1
73	12517003	驱动针杆 (R558W-4/R560W-4)	driving needle guard4(R560W-4/R560W-4)	1
74	209S11009	驱动针杆螺母	screw	1
75	12501006	针杆杆座	needle guard base	1
76	101511011	针杆杆座螺母	screw	2
77	12517004	左固定针杆	counter needle guard, left	1
78	12505001	右固定针杆 (R560W-4/R560W-4)	counter needle guard, right (R560W-4/R560W-4)	1
79	12517005	右固定针杆	counter needle guard, right	1
80	12517011	右固定针杆 (R558W-3)	counter needle guard, right (R558W-3)	1
81	101511005	左右固定针杆螺母	screw	2
82	12504003	左右弯针曲柄	looper holder,asm, (right)	1
83	125011001	右弯针轴套	screw	3
84	12517002	右弯针轴套	lower(right)	1
85	201511007	左弯针轴套	screw (left)	1
86	12504002	左弯针曲柄	looper holder,asm(left)	2
87	209S11012	左弯针螺母	screw(right)	2
88	12517001	左弯针	looper(left)	2



7

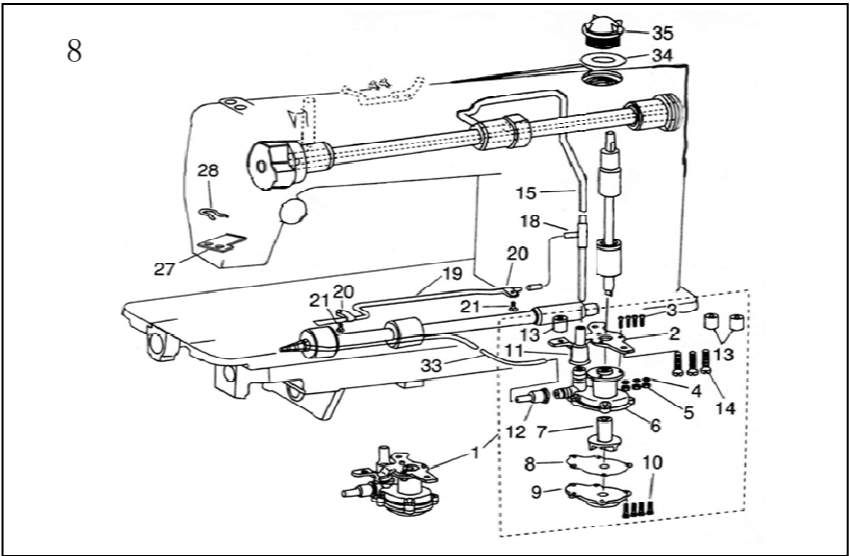


七、挑线、松线、夹线分组件 Thread take-up,tension, and tension releasing assembly complete

序号NO.	公司件号 Part NO.	名称 PartName	零件描述 Description	数量 Number
1	12505008	挑线连杆	thread take-up lever	1
2	209S11021	挑线连杆螺母	screw	1
3	12512025	挑线连杆	thread take-up	1
4	101511005	挑线杆架座螺母	screw	2
5	12512026	挑线杆架座板	tension plate	1
6	12527014	挑线杆架座	tension spring	1
7	125S11018	挑线杆架座螺母	screw	1
8	12512027	挑线杆架座	thread take up lever guard	1
9	401511031	挑线杆架座螺母	screw	2
10	12512028	挑线杆架座	take-up thread tension lever	1
11	125S11014	挑线杆架座	screw	1
12	401006	挑线杆架座	washer	1
14	401511031	挑线杆架座螺母	screw	1
15	12502021	挑线杆架座	tension release shaft	1
16	1250401600	挑线杆架座	tension release arm,asm	1
17	101511012	挑线杆架座	screw	1
18	12527015	挑线杆架座	spring	1
19	12512031	挑线杆架座	suspension bracket	1
20	112S11014	挑线杆架座	screw	2
21	405013	挑线杆架座	smg ring	1
22	401027	挑线杆架座	oil seal ring	1
23	12509004	挑线杆架座	tension release shaft spacer	1
24	12509011	挑线杆架座	spacer(for installing plate	1
25	12509006	挑线杆架座	spacer (B) for installing plate	1
26	125S30010	挑线杆架座	screw	1
27	125S30010	挑线杆架座	screw	1
28	1251300100	挑线杆架座	needle thread tension,asm	1
29	12512032	挑线杆架座	needle thread tension guide plate	1
30	12512033	挑线杆架座	tension thread tension guide	2
31	125S30003	挑线杆架座	looper thread tension post	2
32	1012005	挑线杆架座	tension disc	1
33	12511004	挑线杆架座	tension disc presser ruber	2
34	10127002	挑线杆架座	tension spring	2
35	10112007	挑线杆架座	tension disc stopper	2
36	12511009	挑线杆架座	tension nut	1
37	12512035	挑线杆架座	frame thread guide	1
38	112S11014	挑线杆架座	screw	1
39	12504017	挑线杆架座	tension release latch	1
40	101511012	挑线杆架座	screw	1
41	12512050	挑线杆架座	frame thread eyelet	1
42	12612010	挑线杆架座	frame thread eyelet (three needle)	1
43	1251000600	挑线杆架座	looper thread take-up cam	1
44	125S17004	挑线杆架座	screw	1
45	1251300200	挑线杆架座	looper thread guide plate	1
46	12512010	挑线杆架座	thread guide plate	1
47	125S11014	挑线杆架座	screw	2
48	12512011	挑线杆架座	looper thread guide,asm	1
49	125S11004	挑线杆架座	screw	1
50	12512012	挑线杆架座	thread guide stopper spring	1
51	125S11004	挑线杆架座	screw	2
52	12527007	挑线杆架座	cut-off wire	1
53	101511027	挑线杆架座	screw	2
54	401005	挑线杆架座	washer	2
55	12527008	挑线杆架座	thread guide spring	1
56	114S16004	挑线杆架座	nut	1
57	125S30002	挑线杆架座	thread guide stud	1
58	12512043	挑线杆架座	looper thread guide, right	1
59	12512045	挑线杆架座	cut-off plate	1
60	12512046	挑线杆架座	looper thread guide, left	1
61	12509007	挑线杆架座	collar	1
62	125S11005	挑线杆架座	screw	1
63	12512046	挑线杆架座	looper thread guide	1
64	409S17001	挑线杆架座	screw	1
65	12512047	挑线杆架座	looper thread guide tube	1
66	12504018	挑线杆架座	tension release shaft bushing	1
67	125S11020	挑线杆架座	screw	2
68	12502014	挑线杆架座	looper thread release shaft	1
69	401004	挑线杆架座	rubber ring	1
70	1250401900	挑线杆架座	tension release arm,asm	1
71	114S16004	挑线杆架座	nut	1
72	1251300300	挑线杆架座	lower thread tension,asm	1
73	12512055	挑线杆架座	tension installing plate	2
74	12512049	挑线杆架座	looper thread tension control pl	1
75	12512050	挑线杆架座	thread guide	2
76	401009	挑线杆架座	spring pin	1
77	125S30003	挑线杆架座	looper thread tension post	2
78	12512051	挑线杆架座	tension disc	4
79	12527009	挑线杆架座	looper thread tension spring	2
80	12509008	挑线杆架座	tension spring bushing	2
81	125S16001	挑线杆架座	tension post nut	1
82	401511031	挑线杆架座	screw	2
83	12504020	挑线杆架座	looper thread release latch	1

84	101511012	挑线杆架座	screw	1
85	12512004	挑线杆架座	thread release,Slide plate	1
86	1251300900	挑线杆架座	needle thread tension,asm	1
87	1251301000	挑线杆架座	lower thread tension,asm	1
88	1251301000	挑线杆架座	needle thread tension,asm	1
89	1251300500	挑线杆架座	lower thread tension,asm	1
90	12504022	挑线杆架座	tension release latch	1
91	12504001	挑线杆架座	thread take-up	1
92	12513001	挑线杆架座	frame thread guide	1
93	1250400400	挑线杆架座	tension release latch	1
94	12504023	挑线杆架座	looper thread release latch	1
95	1251006	挑线杆架座	looper thread guide	1
96	1251300200	挑线杆架座	looper thread guide plate	1

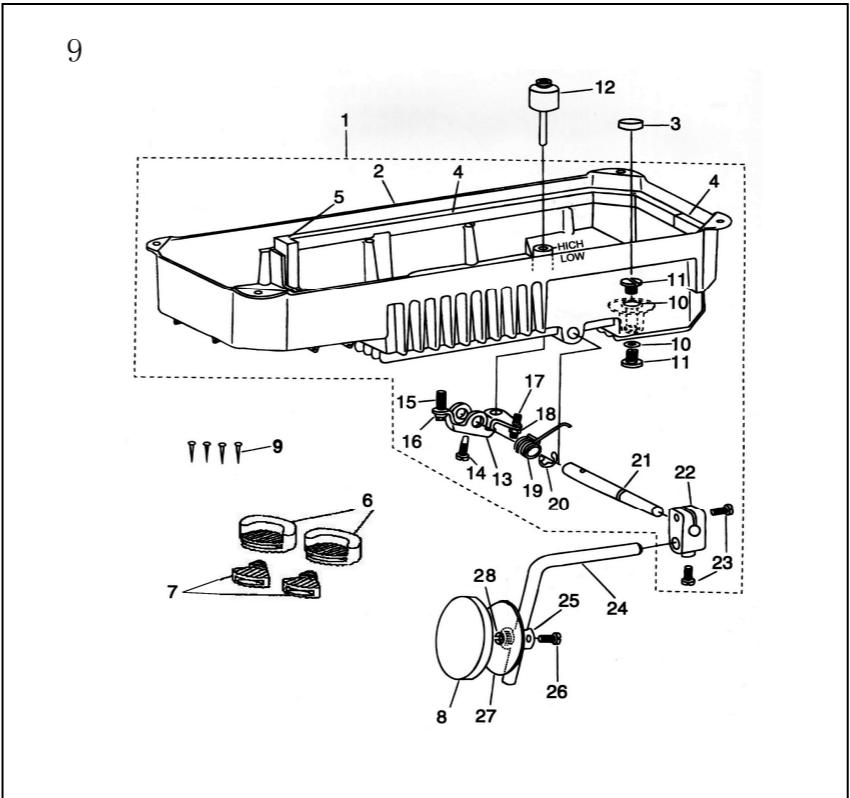
8



八、润滑分组件 Lubrication

序号NO.	公司件号 Part NO.	名称 PartName	零件描述 Description	数量 Number
1	1250000400	润滑组件	lubrication oil pump,asm	1
2	12512052	油泵安装板	oil pump installing base	1
3	125S30011	油泵安装螺母	screw	4
4	6R1550	油泵安装螺母	washer	2
5	6L138	油泵安装螺母	nut	3
6	1250000200	油泵安装螺母	washer	1
7	12500003	油泵安装螺母	oil pump impeller	1
8	12512053	油泵安装螺母	oil pump impeller cover	1
9	1250000400	油泵安装螺母	lubricating oil pump cover	1
10	125S30012	油泵安装螺母	screw	4
11	12506002	油泵安装螺母	rubber joint	1
12	12506003	油泵安装螺母	rubber joint	1
13	12509011	油泵安装螺母	collar	3
14	12500009	油泵安装螺母	screw	3
15	12521002	油泵安装螺母	main shaft oil tube	1
16	12506004	油泵安装螺母	oil sight window base	1
17	12521003	油泵安装螺母	gear oil pipe	1
18	12512054	油泵安装螺母	holder	2
19	101511025	油泵安装螺母	oil pump impeller,asm	2
20	10123002	油泵安装螺母	oil felt	1
21	12521004	油泵安装螺母	oil tube	1
22	10122019	油泵安装螺母	o-rubber ring	1
23	10111004	油泵安装螺母	oil sight window	1

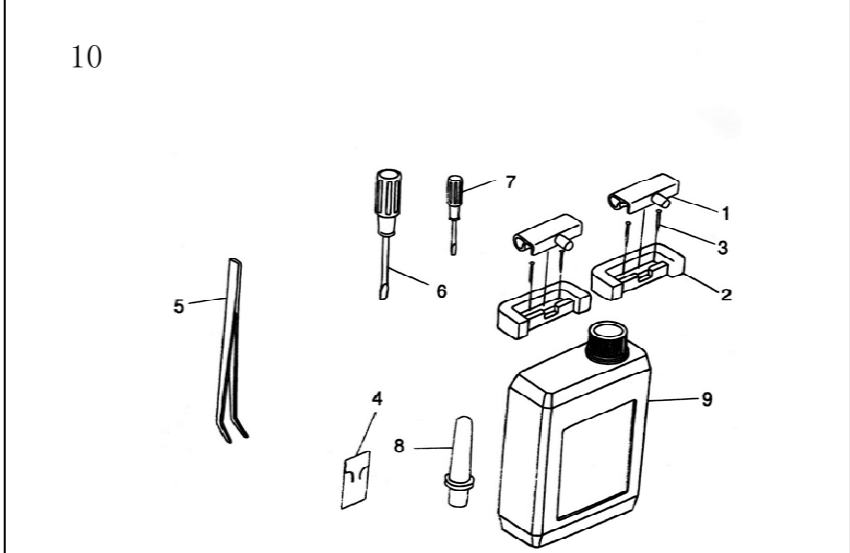
9



九、油盘、膝拍压脚分组件 Oil reservoir & knee lifter components

序号NO.	公司件号 Part NO.	名称 PartName	零件描述 Description	数量 Number
1	1250100700	油盘组件	oil reservoir,asm	1
2	12501009	油盘	oil reservoir	1
3	10131001	油盘螺母	oil reservoir magnet	1
4	12522018	油盘螺母	gasket	2
5	12522019	油盘螺母	gasket	1
6	10122023	油盘螺母	Cushion(big)	2
7	10122022	油盘螺母	Cushion(small)	2
8	10122024	油盘螺母	knee press plate cover	1
9	10130010	油盘螺母	nut	4
10	10122001	排油螺母	oil drain cap gasket	2
11	101511028	排油螺母	oil drain screw	2
12	12531004	膝拍压脚	knee press lifter rod	1
13	12512059	膝拍压脚	lifting	1
14	101512002	定位螺母	positioning screw	1
15	101515012	定位螺母	positioning screw	2
16	101516004	定位螺母	nut	2
17	101515012	定位螺母	positioning screw	2

10



十、机头附件 Machine head accessories</