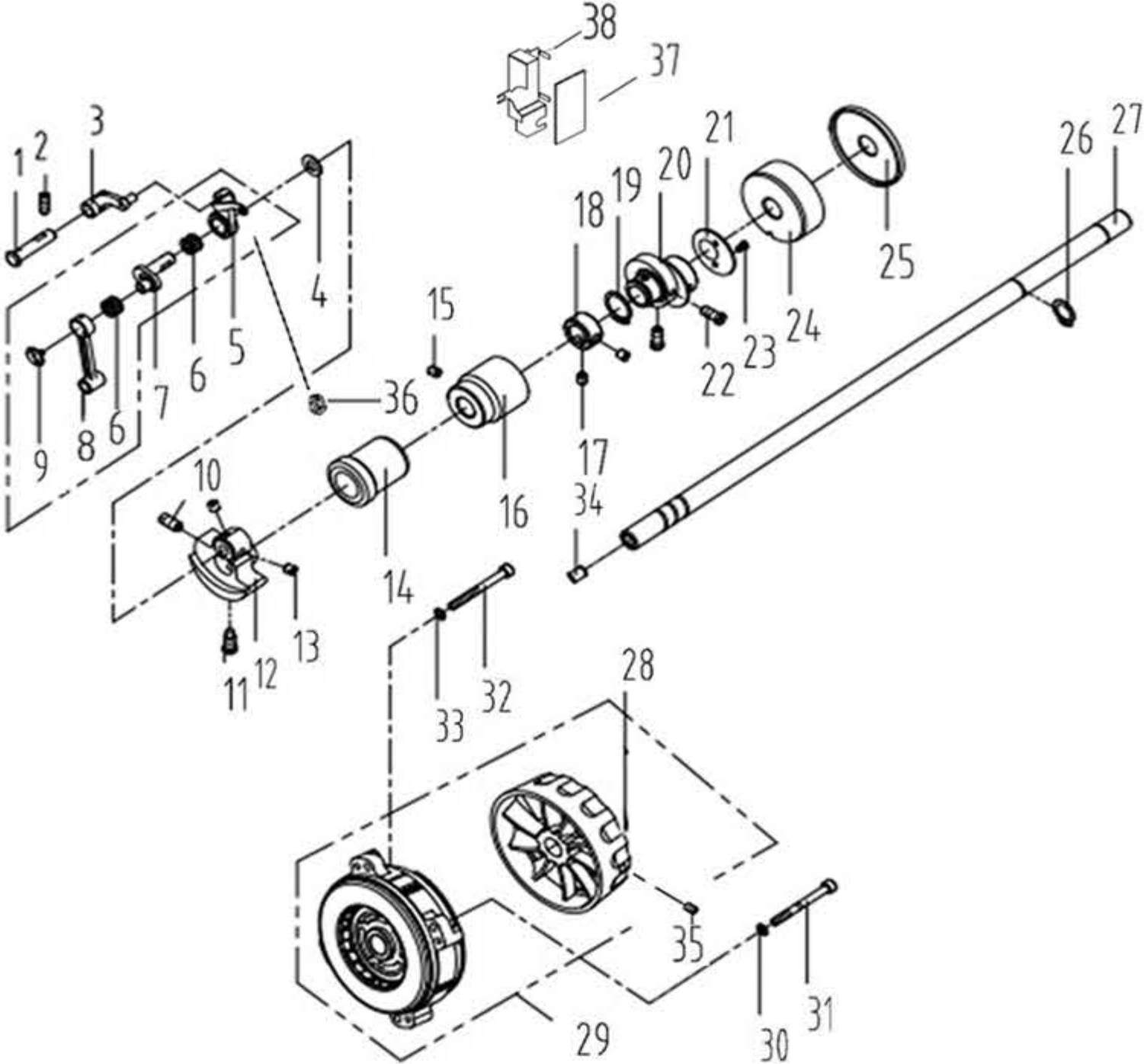


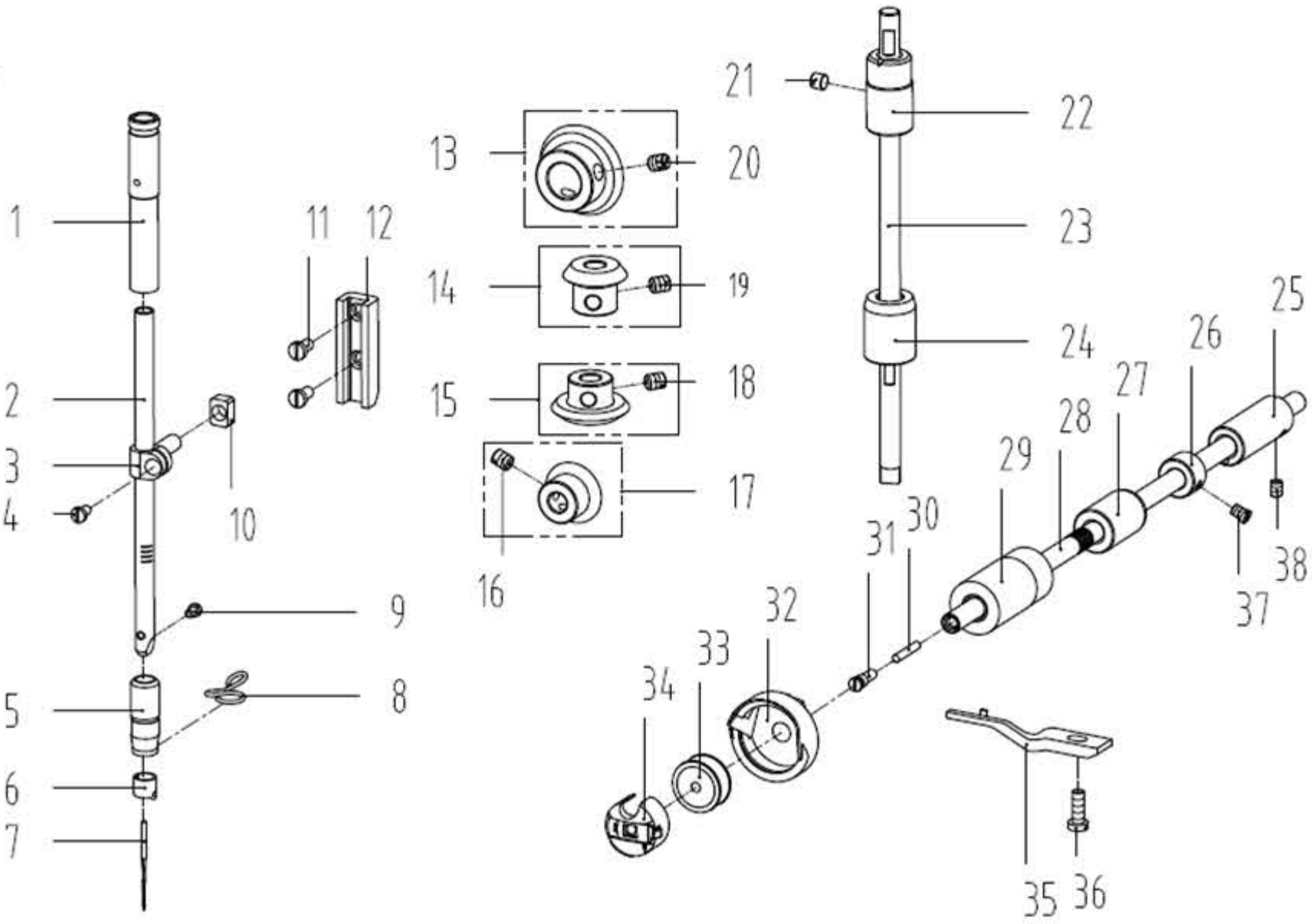
1. 机壳、外装分组件/Machine Frame & Miscellaneous Cover Components

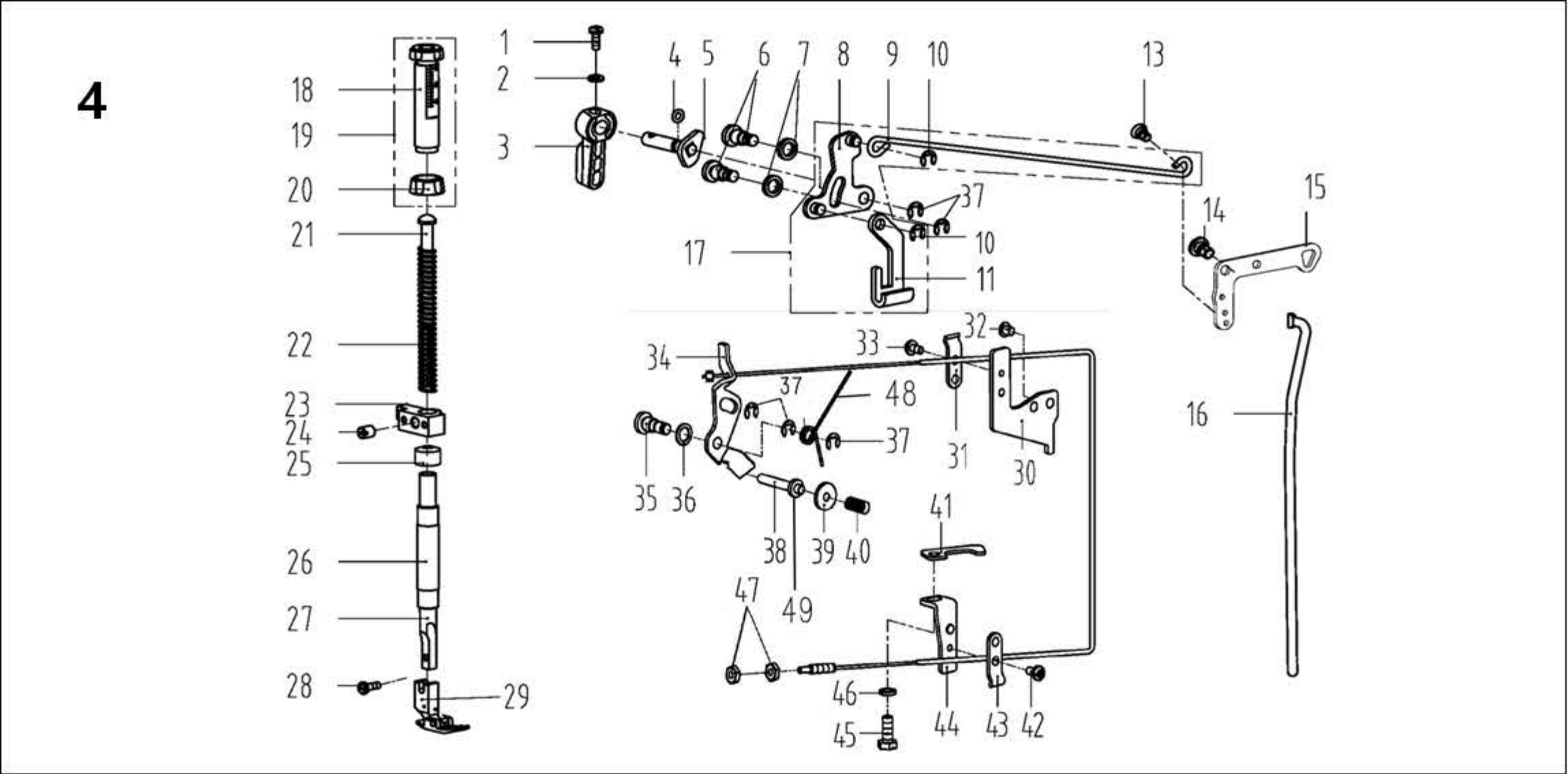
序号 NO	公司件号	Part NO	名称	PartName	零件描述	Description	数量	Number
1	101S11001		螺钉SM3/16"×28 L=9		Screw SM3/16"×28 L=9		3	
2	10122003		面板调节孔螺塞		Rubber plug		2	
3	110201010		面板		Face plate		1	
4	13813005		左线钩		Thread guide left		1	
5	101S11007		螺钉SM11/64"×40 L=6		Screw SM11/64"×40 L=6		1	
6	110222006		面板垫		Face plate gasket		1	
7	11023000900		LED灯开关组件		LED asm		1	
8	101S11001		螺钉SM3/16"×28 L=9		Screw SM3/16"×28 L=9		1	
9	10122013		针杆上衬套孔塞		Rubber plug		1	
10	10122004		针杆曲柄螺孔塞		Rubber plug		1	
11	10122005		挑线连杆销螺孔塞		Rubber plug		1	
12	101S11004		螺钉SM3/16"×28 L=7		Screw SM3/16"×28 L=7		1	
13	13812018		挑线杆防护罩		Thread take-up lever cover		1	
14	101S11004		螺钉SM3/16"×28 L=7		Screw SM3/16"×28 L=7		1	
15	13512004		三孔线勾		3-hole thread guide		1	
16	10122005		挑线连杆销螺孔塞		Rubber plug		1	
17	11419001		割线刀		Knife		1	
18	114S11015		螺钉SM9/64"×40 L=6		Screw SM9/64"×40 L=6		2	
19	20722002		油塞		Rubber plug		1	
20	110222005		后窗板垫		Side plate gasket		1	
21	110212007		后窗板		Side plate		1	
22	101S11001		螺钉SM3/16"×28 L=9		Screw SM3/16"×28 L=9		11	
23	11023301900		一体机控制器		Electronic control box		1	
24	114S13001		螺钉M5 L=20		Screw M5 L=20		1	
25	114S30001		螺栓M5 L=25		Screw M5 L=25		3	
26	W01009		垫圈5		Wsher 5		4	
27	10122006		送料调节器孔塞		Rubber plug		1	
28	10122007		下轴工艺孔塞		Rubber plug		1	
29	101S12001		底板支柱		Machine head stud		4	
30	138S08006		螺钉SM3/16"×28 L=7		Screw SM3/16"×28 L=7		1	
31	13812066		过线板		Thread tension guide plate		1	
32	13810008		小夹线器螺柱		Thread tension post		1	
33	11212004		小夹线板		Thread tension disk		2	
34	11227001		小夹线弹簧		Thread tension spring		1	
35	138S16019		小夹线器螺母		Thread tension nut		1	
36	1381300400		小夹线器组件		Thread tension asm.		1	
37	10126030		松线钉		Tension release pin		1	
38	10122014		挑线簧调节座O型圈		Rubber ring		1	
39	101S15005		螺钉SM9/64"x40 L=5.5		Screw SM9/64"x40 L=5.5		1	
40	10103011		挑线簧调节座		Thread tension base		1	
41	10127021		挑线簧		Thread take-up spring		1	
	10127022		挑线簧 (厚料)		Thread take-up spring (H)		1	
42	10112005		夹线板		Thread tension disk		2	
43	10112006		松线板		Disk stopper		1	
44	101s30002		夹线螺钉		Thread tension post		1	
45	10127002		夹线弹簧		Thread tension spring		1	
	11427050		夹线弹簧 (厚料)		Thread tension spring (H)		1	
46	10112007		夹线制动板		Thread disk rotating stopper		1	
47	138S16013		夹线螺母		Thread tension nut		1	
48	1381300500		夹线器组件		Thread tension asm		1	
	1381300700		夹线器组件 (厚料)		Thread tension asm (H)		1	
49	10122110		橡皮塞 (单孔)		Rubber plug (one-hole)		1	
50	101S11007		螺钉SM11/64"×40 L=6		Screw SM11/64"×40 L=6		1	
51	10113004		右线钩		Thread guide right		1	
52	101S15010		螺钉SM15/64"×28 L=10.5		Screw SM15/64"×28 L=10.5		1	
53	401S16001		螺母SM9/64"×40		Nut SM9/64"×40		1	
54	11413011		固定式缓线钩		Thread guide		1	
55	101S11002		螺钉SM11/64"×40 L=5.5		Screw SM11/64"×40 L=5.5		1	
56	13812111		卷边器座		Ruler stop seat		1	
57	101S17002		螺钉SM11/64"×40 L=6.5		Screw SM11/64"×40 L=6.5		2	
58	11414006		针板		Needle plate		1	
	11315001		针板 (厚料)		Needle plate (H)		1	
59	10115002		推板		Slide plate		1	
60	10127009		推板簧		Slide plate spring		1	
61	101S11019		螺钉SM3/32"x56 L=2		Screw SM3/32"x56 L=2		2	



2. 上轴挑线分组件/Main Shaft & Thread Take-up Components

序号 NO	公司件号	Part NO	名称	PartName	零件描述	Description	数量	Number
1	10126001		挑线连杆销	Thread take-up connecting rod pin	Thread take-up connecting rod pin		1	
2	101S15001		螺钉SM15/64"x28 L=15	Screw SM15/64"x28 L=15	Screw SM15/64"x28 L=15		1	
3	10105001		挑线连杆	Thread take-up connecting rod (H)	Thread take-up connecting rod (H)		1	
4	10112003		针杆曲柄护板	Needle bar crank protecting plate	Needle bar crank protecting plate		1	
5	1013800100		挑线杆分组件	Thread take-up lever asm	Thread take-up lever asm		1	
	1133800200		挑线杆组件 (厚料)	Thread take-up lever asm (H)	Thread take-up lever asm (H)		1	
6	10124001		挑线杆滚针轴承	Needle bearing	Needle bearing		2	
	11310012		挑线曲柄分部件	Thread take-up crank	Thread take-up crank		1	
7	11310010		挑线曲柄分部件 (H-M)	Thread take-up crank (H-M)	Thread take-up crank (H-M)		1	
	1011000400		挑线曲柄分部件 (厚料)	Thread take-up crank (H)	Thread take-up crank (H)		1	
8	10105002		针杆连杆	Needle bar connecting rod	Needle bar connecting rod		1	
9	101S17001		螺钉SM9/64×40 (左旋) L=4.8	Screw SM9/64×40 (left hand) L=4.8	Screw SM9/64×40 (left hand) L=4.8		1	
10	101S15004		螺钉 SM9/32"x28 L=16	Screw SM9/32"x28 L=16	Screw SM9/32"x28 L=16		1	
11	101S11003		螺钉SM9/32"x28 L=16	Screw SM9/32"x28 L=16	Screw SM9/32"x28 L=16		1	
12	113804014		针杆曲柄	Needle bar crank	Needle bar crank		1	
	115404010		针杆曲柄 (厚料)	Needle bar crank (H)	Needle bar crank (H)		1	
13	101S15002		螺钉SM1/4"x40 L=6	Screw SM1/4"x40 L=6	Screw SM1/4"x40 L=6		2	
14	11380302600		上轴前轴套组件	Main shaft bushing front	Main shaft bushing front		1	
15	101S15010		螺钉SM15/64"x28 L=8	Screw SM15/64"x28 L=8	Screw SM15/64"x28 L=8		1	
16	10403023		主轴中轴套	Main shaft bushing mid	Main shaft bushing mid		1	
17	101S14001		螺钉SM1/4"x40 L=6	Screw SM 1/4"x40 L=6	Screw SM 1/4"x40 L=6		2	
18	10108001		上轴挡圈	Main shaft thrust collar	Main shaft thrust collar		1	
19	H03002		挡圈20	Snap ring 20	Snap ring 20		1	
	11310014		送料偏心轮	Feed eccentric cam	Feed eccentric cam		1	
20	400006		送料偏心轮 (H-M)	Feed eccentric cam (H-M)	Feed eccentric cam (H-M)		1	
	400006		送料偏心轮 (厚料)	Feed eccentric cam (H)	Feed eccentric cam (H)		1	
21	10112017		送料偏心轮盖板	Cover plate	Cover plate		1	
22	101S11013		螺钉SM1/4"x40 L=13	Screw SM1/4"x40 L=13	Screw SM1/4"x40 L=13		2	
23	101S11005		螺钉SM9/64"x40 L=6	Screw SM9/64"x40 L=6	Screw SM9/64"x40 L=6		2	
24	12803014		上轴后轴套	The rear axle sleeve	The rear axle sleeve		1	
25	10122008		上轴后套挡油油封	Oil seal	Oil seal		1	
26	H03001		挡圈15	Snap ring 15	Snap ring 15		1	
27	10102026		上轴	Main shaft	Main shaft		1	
28	303560		手轮	Handwheel	Handwheel		1	
29	110233016		平缝一体机电机	Motor	Motor		1	
30	W03002		弹垫5	Spring washer 5	Spring washer 5		3	
31	114S13001		螺钉M5 L=20	Screw M5 L=20	Screw M5 L=20		3	
32	S05218		螺钉M5 L=22	Screw M5 L=22	Screw M5 L=22		1	
33	W03002		弹垫5	Spring washer 5	Spring washer 5		1	
34	10122012		上轴孔塞	Rubber plug	Rubber plug		1	
35	S09007		螺钉M6 L=8	Screw M6 L=8	Screw M6 L=8		2	
36	14422008		挑线杆断油橡胶	Thread take-up lever rubber	Thread take-up lever rubber		1	
37	14123001		防油罩油棉	Oil cotton	Oil cotton		1	
38	14112004		防油罩	Oil shield	Oil shield		1	



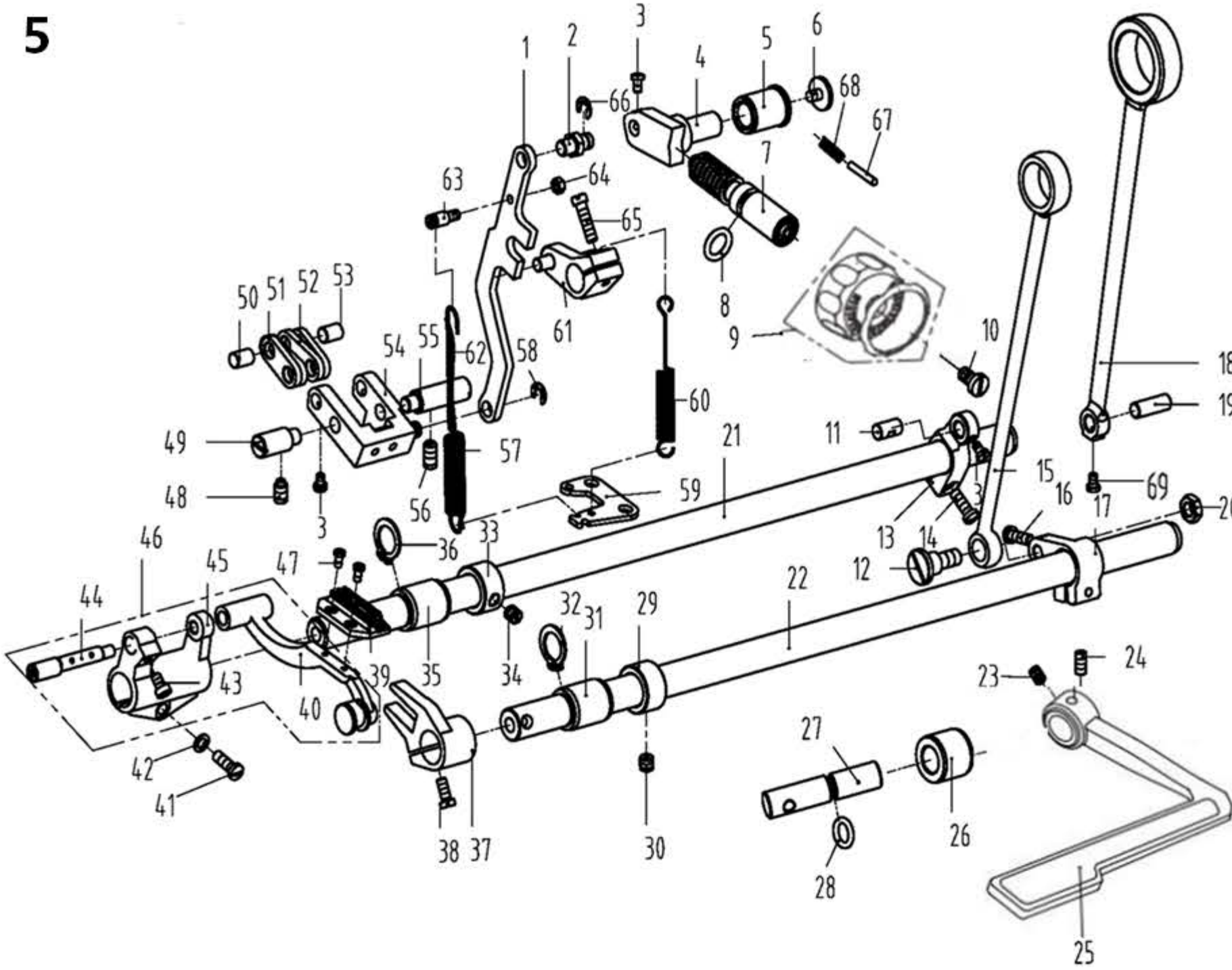


4. 压料、自动抬压脚分组件/Presser Bar & Auto Lifter Components

序号 NO	公司件号	Part NO	名称	PartName	零件描述	Description	数量	Number
1	101S11010		螺钉SM9/64"x40 L=11		Screw SM9/64"x40 L=11		1	
2	10128002		压脚扳手螺钉垫圈		Washer		1	
3	13811029		压脚扳手		Hand lifter		1	
4	O01004		O型圈		Rubber ring		1	
5	1011000200		压脚扳手凸轮分部件		Hand lifter cam asm		1	
6	101S20001		前杠杆螺纹销		Screw		2	
7	10128015		螺纹销橡胶垫圈		Washer		2	
8	1011200100		抬压脚前杠杆分部件		Lift front lever component		1	
9	10112013		抬压脚拉杆		Kneep lifter pull rod		1	
10	H05003		挡圈5		Snap ring 5		2	
11	10112010		压脚升降板		Lifting plate		1	
13	101S20004		抬压脚拉杆螺钉SM3/16"x32		Hinge Screw SM3/16"x32		1	
14	101S20003		后杠杆轴位螺钉SM15/64"x28		Hinge screw SM15/64"x28		1	
15	10112014		抬压脚后杠杆		Knee lifter back lever		1	
16	10112015		抬压脚顶杆		Knee lifter connecting rod		1	
17	1011200200		抬压脚前杠杆组件		Knee lifter lever asm		1	
18	113811018		调压螺钉		Press regulating screw		1	
	1138NS30003		调压螺钉 (厚料)		Press regulating screw (H)		1	
19	11381101800		调压螺钉组件		Presser regulating screw nut asm		1	
20	13811028		调压螺母		Press regulating nut		1	
	1138NS16005		调压螺母 (厚料)		Press regulating nut (H)		1	
21	10102003		调压导杆		Press regulating guide bar		1	
22	113827010		调压簧		Press regulating spring		1	
	10127024		调压簧 (厚料)		Press regulating spring (H)		1	
23	13809030		压杆导架		Presser bar guide bracket		1	
24	101S15007		螺钉SM1/4"x40 L=8		Screw SM1/4"x40 L=8		1	
25	10122112		压杆防油套		Pressure bar oil cover		1	
26	10103012		压杆衬套		Presser bar bushing		1	
27	10102004		压杆		Presser bar		1	
28	101S11009		螺钉SM9/64"x40 L=10.5		Screw SM9/64"x40 L=10.5		1	
29	1131600600		压脚组件		Presser foot asm		1	
	1131600300		压脚组件 (厚料)		Presser foot asm(H)		1	
30	11212009		松线导管上支架		Wire release bracket upper		1	
31	11212008		松线导管压板		Wire release press plate		1	
32	101S11004		螺钉SM3/16"x28 L=7		Screw SM3/16"x28 L=7		1	
33	113S11004		螺钉M4 L=8		Screw M4 L=8		1	
34	1141206000		松线顶板组件		Wire release plate asm		1	
35	101S20002		松线顶板螺纹销		Wire release plate pin		1	
36	10128015		螺纹销橡胶垫圈		Washer		1	
37	11329020		挡圈5		Snap ring 5		5	
38	10126003		松线辅钉		Thread release supporting pin		1	
39	10128001		松线辅钉垫片		washer		1	
40	10127003		松线辅钉弹簧		Spring		1	
41	10112022		旋梭供油管压板		Tube press plate		1	
42	113S11004		螺钉M4 L=8		Screw M4 L=8		1	
43	11212008		松线导管压板		Wire presser		1	
44	11312001		松线导管下支架		Wire release bracket lower		1	
45	116S30003		螺钉SM15/64"x28 L=14.5		Screw SM15/64"x28 L=14.5		1	
46	W02004		弹性垫圈		Spring washer		1	
47	113S12001		螺母 M5		Nut M5		2	
48	11427009		松线顶板复位簧		Reset spring		1	
49	H05012		松线辅钉挡圈		Snap ring		1	

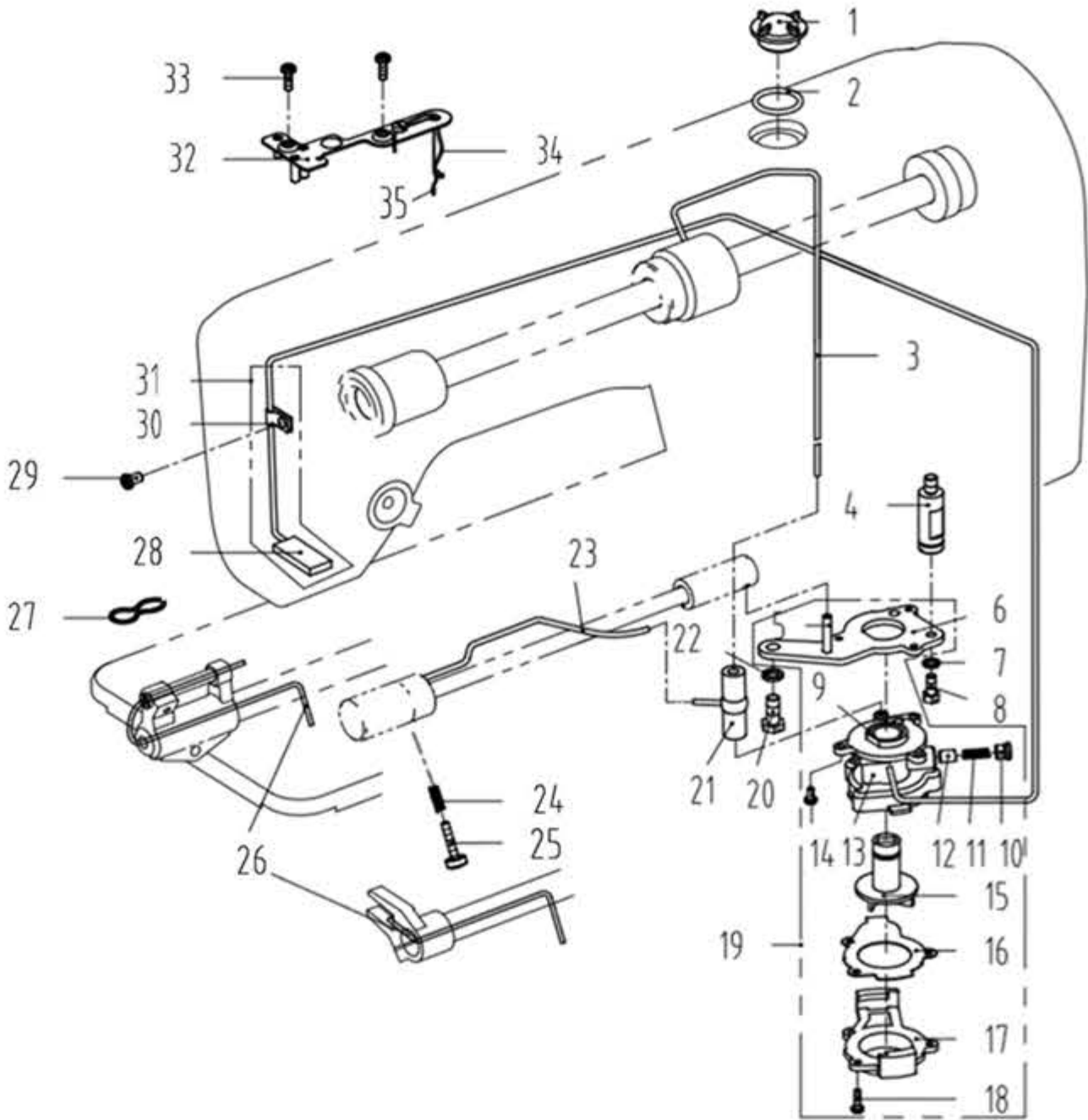
3. 针杆、竖轴、下轴部件/Needle bar & Upright Shaft & Hook Driving Shaft Components

序号 NO	公司件号	Part NO	名称	PartName	零件描述	Description	数量	Number
1	10103009		针杆上衬套		Needle bar bushing upper		1	
2	10102002		针杆		Needle bar		1	
	10102021		针杆 (厚料)		Needle bar (H)		1	
3	10138002		针杆连接柱		Needle bar connecting rod		1	
4	101S11005		螺钉SM9/64"x40 L=6		Screw SM9/64"x40 L=6		1	
5	110103002		针杆下衬套		Needle bar bushing lower		1	
	110103003		针杆下衬套 (厚料)		Needle bar bushing lower (H)		1	
6	10113002		针杆线勾		Needle bar thread guide		1	
	11412063		针杆线勾 (厚料)		Needle bar thread guide (H)		1	
7	10117001		机针DB×1#14		Needle DB×1#14		1	
	10117002		机针DP×5#21 (厚料)		Needle DP×5#21 (H)		1	
8	10413001		针杆下衬套线勾		Lower bushing thread guide		1	
	10113009		针杆下轴套线勾 (厚料)		Lower bushing thread guide (H)		1	
9	101S11006		螺钉SM1/8"x44 L=4.5		Screw SM1/8"x44 L=4.5		1	
10	10109001		针杆连接柱滑块		Slide block		1	
11	101S11008		螺钉SM11/64"x40 L=8		Screw SM11/64"x40 L=8		2	
12	10109002		针杆接头滑块导轨		Needle bar guide		1	
13	10425004		上轴伞齿轮		Upper shaft bevel gear		1	
14	10425003		竖轴上伞齿轮		Upper small bevel gear asm		1	
15	10425002		竖轴下伞齿轮		lower large bevel gear asm		1	
16	101S15007		螺钉SM1/4"x40 L=7		Screw SM1/4"x40 L=7		2	
17	10425001		下轴伞齿轮		Hook drive shaft bevel gear		1	
18	101S15007		螺钉SM1/4"x40 L=7		Screw SM1/4"x40 L=7		2	
19	101S15007		螺钉SM1/4"x40 L=7		Screw SM1/4"x40 L=7		2	
20	101S15007		螺钉SM1/4"x40 L=7		Screw SM1/4"x40 L=7		2	
21	101S15006		螺钉SM15/64"x28 L=4.7		Screw SM15/64"x28 L=4.7		1	
22	113803012		竖轴上轴套		Upright shaft bushing upper		1	
23	10102007		竖轴		Upright shaft		1	
24	10403013		竖轴下轴套		Upright shaft bushing lower		1	
25	113803014		下轴后轴套		Hook driving shaft bushing back		1	
26	10108002		下轴挡圈		Hook driving shaft snap ring		1	
27	110203002		下轴中套		Lower shaft middle bushing		1	
28	13802303		下轴		Hook driving shaft		1	
29	13803320		下轴前轴套		Hook driving shaft bushing front		1	
30	13823001		下轴限油芯		Oil wick		1	
31	101S30005		下轴限油螺钉		set screw		1	
32	110218001		旋梭		Hook asm		1	
	11418002		旋梭 (厚料)		Hook asm (H)		1	
33	10118003		梭心		Bobbin		1	
34	11218504		梭壳		Bobbin case asm		1	
35	10112016		旋梭定位钩		Finger postioner		1	
	10112032		旋梭定位钩 (厚料)		Finger postioner (H)		1	
36	116S11005		螺钉SM11/64"x40 L=13		Screw SM11/64"x40 L=13		1	
37	101S11012		螺钉SM11/64"x40 L=4.8		Screw SM11/64"x40 L=4.8		2	
38	113S14020		螺钉SM11/64"x40 L=6		Screw SM11/64"x40 L=6		1	
	101S11007		螺钉SM11/64"x40 L=6 (厚料)		Screw SM11/64"x40 L=6 (H)		1	



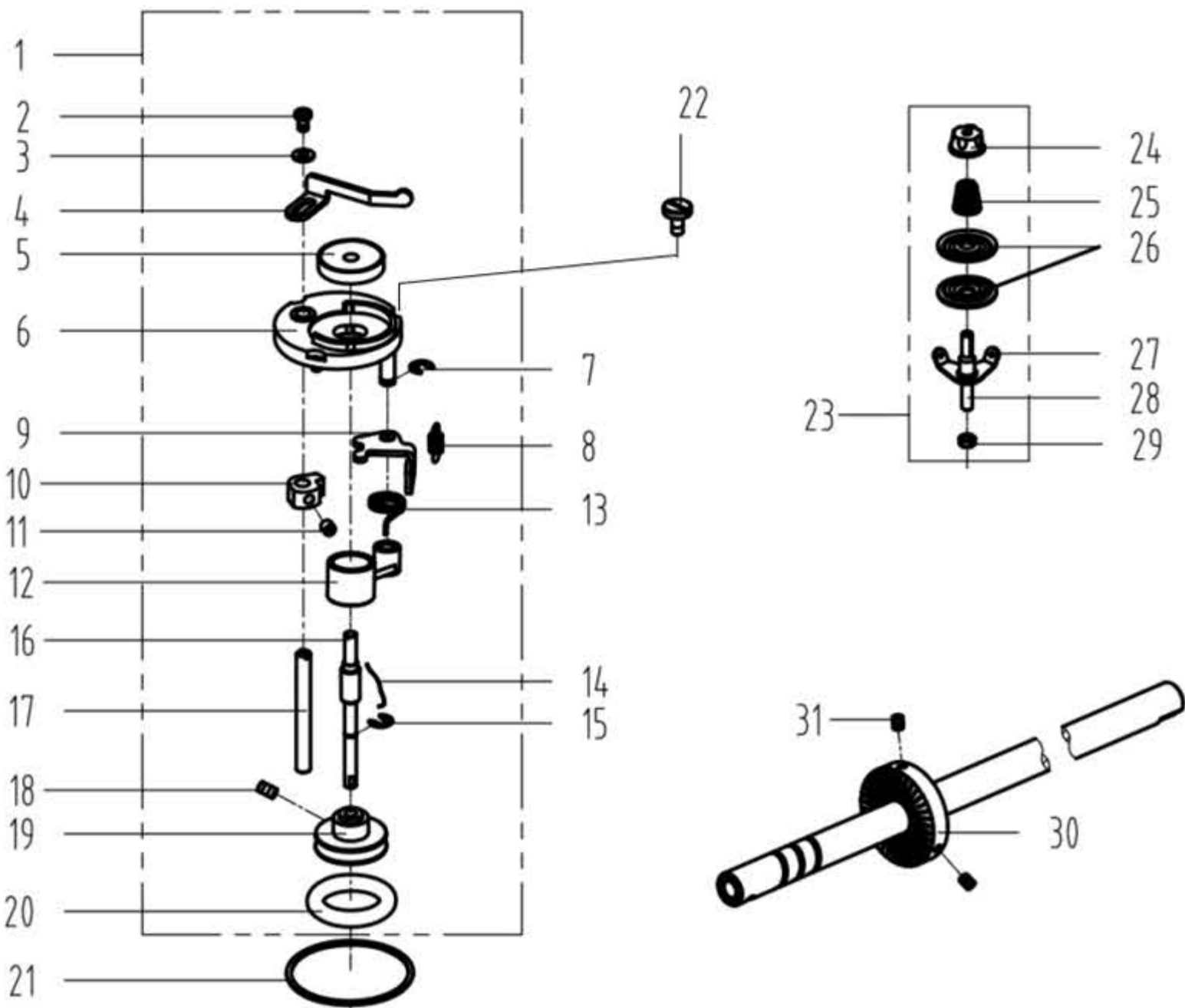
5. 送料分组件/Feed Mechanism Components

序号 NO	公司件号	Part NO	名称	PartName	零件描述	Description	数量	Number
1	10105007		倒送料连杆		Reverse feed connecting rod		1	
2	11426021		倒送料连杆销		Connecting rod pin		1	
	11326011		倒送料连杆销 (-7)		Connecting rod pin (-7)		1	
3	101S11005		螺钉SM9/64"x40 L=6		Screw SM9/64"x40 L=6		6	
4	10101053		送料调节器		Feed regulator		1	
5	10403017		送料调节器轴套		Feed regulator bushing		1	
6	101S11023		螺钉SM3/16"x28 L=6.5		Screw SM3/16"x28 L=6.5		1	
7	10126045		标盘螺柱		Feed regulator stud		1	
8	10122016		送料调节螺钉O形圈		Rubber ring		1	
9	1011107000		标盘旋钮组件		Knob component		1	
	1011107100		标盘旋钮组件 (-7)		Knob component (-7)		1	
10	101S11022		螺钉SM3/16"x28 L=18		Screw SM3/16"x28 L=18		1	
11	10126011		送料曲柄销		Feed rocker crank pin		1	
12	101S20005		抬牙连杆轴位螺钉 SM9/32"x28		hinge Screw SM9/32"x28		1	
13	10104002		送料曲柄		Feed rocker shaft crank		1	
	11304010		送料曲柄 (-7)		Feed rocker shaft crank (-7)		1	
14	101S11016		螺钉SM3/16"x28 L=14		Screw SM3/16"x28 L=14		1	
15	115405003		抬牙连杆		Connecting rod		1	
16	101S11016		螺钉SM3/16"x28 L=14		Screw SM3/16"x28 L=14		1	
17	10104004		抬牙后曲柄		Feed driving shaft crank		1	
18	115405002		送料连杆		Rocker shaft connecting rod		1	
	400083		送料连杆 (-7)		Rocker shaft connecting rod (-7)		1	
19	10126006		送料连杆销		Connecting rod pin		1	
	11326011		送料连杆销 (-7)		Connecting rod pin (-7)		1	
20	101S16003		螺母 SM9/32"x28		Hinge Screw SM9/32"x28		1	
21	10102008		送料轴		Feed rocker shaft		1	
22	11202001		抬牙轴		Feed driving shaft		1	
23	101S15006		螺钉SM15/64×28 L=7		Screw SM15/64×28 L=7		1	
24	101S15013		螺钉SM15/64"x28 L=10		ScrewSM15/64"x28 L=10		1	
25	10131086		倒缝扳手		Reverse feed lever		1	
26	10103024		倒送料轴轴套		Reverse feed shaft bushing back		1	
27	10102023		倒缝送料轴		Reverse feed shaft		1	
28	10122017		倒送料轴O形圈		Rubber ring		1	
29	10108003		送料轴挡圈		Feed rocker shaft snap ring		1	
30	101S15002		螺钉 SM1/4"x40 L=6		Screw SM1/4"x40 L=6		2	
31	10403015		轴套		Bushing		1	
32	H03001		挡圈15		Snap ring 15		1	
33	10108003		送料轴挡圈		Feed rocker shaft snap ring		1	
34	101S15002		螺钉SM1/4"x40 L=6		Screw SM1/4"x40 L=6		2	
35	10403015		轴套		Bushing		1	
36	H03001		GB/T894.1-1986挡圈15		Snap ring 15		1	
37	10104007		抬牙叉形曲柄		Driving shaft crank		1	
	113804011		抬牙叉形曲柄 (厚料)		Driving shaft crank(H)		1	
38	116S11005		螺钉SM11/64"x40 L=13		Screw SM11/64"x40 L=13		1	
	1138NS30004		螺钉SM11/64"x40 L=13 (厚料)		Screw SM11/64"x40 L=13 (H)		1	
39	11414002		送料牙		Feed dog		1	
	11314001		送料牙 (厚料)		Feed dog (H)		1	
40	470060		牙架		Feed bar asm.		1	
41	101S11016		螺钉SM3/16"x28 L=14		Screw SM3/16"x28 L=14		1	
42	10128003		牙架座螺钉垫圈		Washer		1	
43	101S11025		螺钉SM11/64"x40 L=7		Screw SM11/64"x40 L=7		1	
44	10401007		牙架销		Feed bar pin		1	
45	480095		牙架座		Feed bar bed		1	
46	11380700300		牙架组件 (成品)		Feed bar sam		1	
47	101S11018		螺钉SM1/8"x44 L=6		Screw SM1/8"x44 L=6		2	
48	113S14010		螺钉SM15/64"x28 L=10.5		Screw SM15/64"x28 L=10.5		1	
49	10126009		送料摆动板座左销		Left pin		1	
50	10126007		短摆动板连杆销		Connecting pin		1	
51	10109005		送料短摆动板		Feed short shaking plate		2	
52	10109004		送料长摆动板		Feed long shaking plate		2	
53	10126007		短摆动板连杆销		Connecting pin		1	
54	1010100200		送料摆动板座分部件		Feed shaking plate bed		1	
55	10126010		送料摆动板座右销		Component right pin		1	
56	101S15010		螺钉SM15/64"x28 L=10.5		Screw SM15/64"x28 L=10.5		1	
57	11427011		送料调节弹簧		Spring		1	
58	11329020		开口挡圈5		Snap ring 5		1	
59	13812081		拉簧固定板		Pull spring fixing plate		1	
60	10127011		倒送料拉簧		Reverse feed pull spring		1	
61	1140402700		倒送料曲柄组件		Feed reverse crank asm		1	
	1130402800		倒送料曲柄组件 (-7)		Feed reverse crank asm (-7)		1	
62	11321005		油管		Tube		1	
63	114S30007		螺钉SM11/64×40 L=7.5		Screw SM11/64×40 L=7.5		1	
64	114S16004		螺母SM11/64"x40		Nut SM11/64"x40		1	
65	S01102		螺钉SM3/16"x28 L=18		Screw SM3/16"x28 L=18		1	
66	11329020		挡圈5		Snap ring 5		1	
67	10126015		送料距锁合销		Pin		1	
68	10127010		送料距锁合簧		Spring		1	
69	114S11015		螺钉SM9/64"×40 L=6		Screw SM9/64"×40 L=6		1	



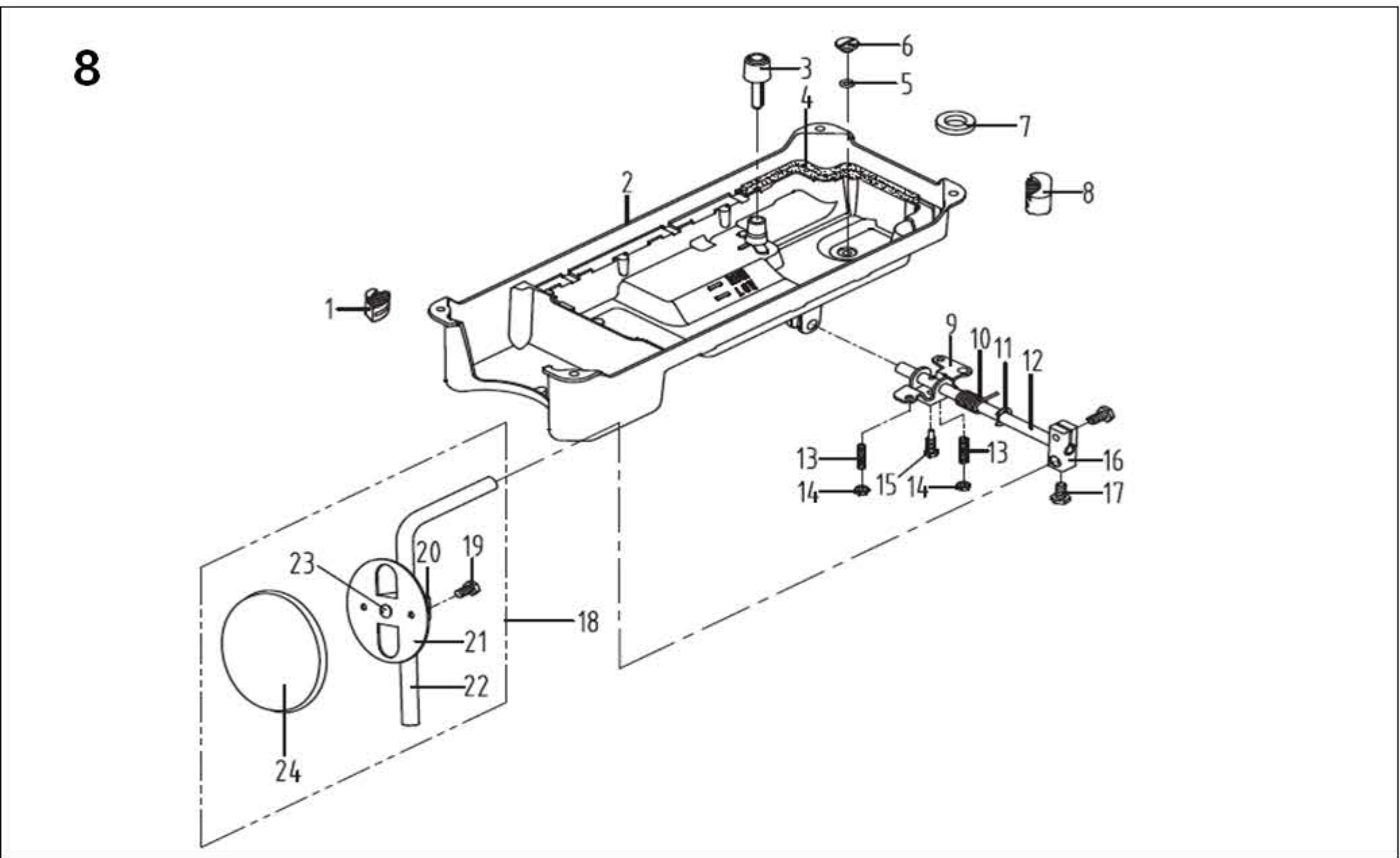
6. 润滑、油量检测组件/Oil Lubrication & Oil Measuring Components

序号 NO	公司件号	Part NO	名称	PartName	零件描述	Description	数量	Number
1	10111004		油窗		Oil sight window		1	
2	10122019		油窗O形圈		Rubber ring		1	
3	14121001		上轴供油管		Main shaft oil tube		1	
4	101S30008		油泵连接螺柱		Oil pump connecting stud		1	
5	10121001		下轴供油管		Hook driving shaft oil tube		1	
6	10112020		油泵安装板		Oil pump installing base		1	
7	W03002		弹垫		Spring washer		1	
8	209S12001		螺钉SM11/64"x40 L=10.5		Screw SM11/64"x40 L=10.5		1	
9	10103022		油泵体衬套		Oil pump bushing		1	
10	101S30007		柱塞螺钉M7X0.75 L=5		Plunger Screw M7X0.75 L=5		1	
11	10127013		柱塞簧		Plunger spring		1	
12	10122018		回油柱塞		Plunger		1	
13	10120001		油泵体		Oil pump		1	
14	S04093		螺钉M3 L=6		Screw M3 L=6		3	
15	10111003		油泵叶轮		Oil pump impeller		1	
16	10112021		油泵叶轮托板		Oil pump impeller cover		1	
17	10111007		油泵盖		Lubricating oil pump cover		1	
18	101S30006		螺钉ST2.9 L=10		Screw ST2.9 L=10		3	
19	1012000100		油泵分部件		Lubricating oil pump component		1	
20	101S11026		螺钉SM15/64"×28 L=9		Screw SM15/64"×28 L=9		1	
21	10136001		供油管接头		Rubber joint		1	
22	W02004		弹垫M6		Spring Washer M6		1	
23	13821303		供油管		Hook oil tube		1	
24	13827014		油量调节螺钉弹簧		Spring		1	
25	113S30001		螺钉SM11/64×40 L=19		Screw SM11/64×40 L=19		1	
26	10423005		油线		Oil wick		1	
27	10127015		回油毡夹		Oil felt clamp		1	
28	10123006		回油毡		Oil felt felt		1	
29	101S11004		螺钉SM3/16"×28 L=7		Screw SM3/16"×28 L=7		1	
30	10112053		回油管夹		Oil tube clamp		1	
31	11502100100		回油管部件		Oil return tube component		1	
32	10112025		油线固定板		Oil wick fixing plate		1	
33	101S11010		螺钉SM9/64"×40 L=11		Screw SM9/64"×40 L=11		2	
34	10123010		油线		Oil wick		1	
35	10112053		油线夹		Wick		1	



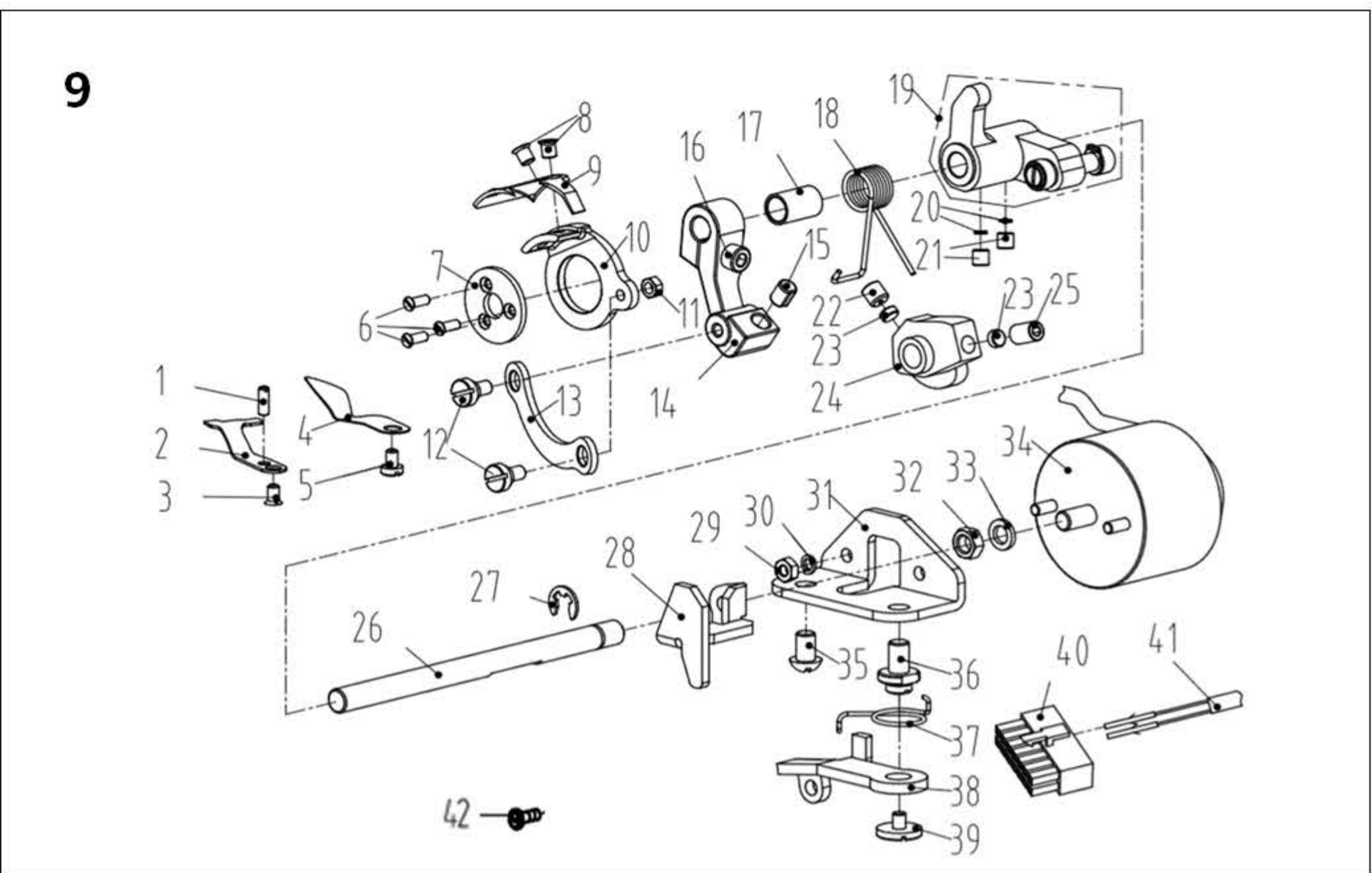
7. 绕线器组件/ Bobbin Components

序号 NO	公司件号	Part NO	名称	PartName	零件描述	Description	数量	Number
1	1383103900		绕线器组件		Bobbin winder asm.		1	
2	114S11008		螺钉M4 L=6		Screw M4 L=6		1	
3	W01142		垫圈4		Washer 4		1	
4	10113030		压线控制板		Thread press control plate		1	
5	10111120		绕线衬垫		Winding pad		1	
6	13831101		绕线器装置主座		Bobbin winder bed		1	
7	H05006		开口挡圈5		Snap ring		1	
8	10127061		复位板拉簧		Spring		1	
9	13812110		调节板		Regulating plate		1	
10	10110030		绕线凸轮		Bobbin winder cam		1	
11	S09045		螺钉M5 L=5		Screw M5 L=5		1	
12	1380510600		绕线器连杆组件		Bobbin winder connecting rod		1	
13	13827103		满线复位簧		spring		1	
14	10127060		弹簧		Spring		1	
15	H05909		开口挡圈4		Snap ring 4		1	
16	13802111		绕线器主轴		Bobbin winder mian shaft		1	
17	13802026		绕线凸轮轴		Bobbin winder cam shaft		1	
18	S09103		螺钉M4 L=4		Screw M4 L=4		2	
19	13831102		绕线轮		Bobbin winder wheel		1	
20	O01110		O型圈		Ring		1	
21	11422062		密封垫		Washer		1	
22	1102NS11001		螺钉SM3/16"×28 L=10		Screw SM3/16"×28 L=10		3	
23	1381300600		底线夹线器		Bobbin thread tension asm.		1	
24	138s16019		夹线螺母		Thread tension nut		1	
25	11427006		小夹线弹簧		Spring		1	
26	10112005		夹线板		Thread tension disk		2	
27	11413022		夹线过线板		Thread tension guide plate		1	
28	112S13004		夹线螺钉		Screw		1	
29	114S16001		螺母SM11/64"×40		Nut SM11/64"×40		1	
30	11435013		绕线器驱动轮		Driving wheel		1	
31	S10009		螺钉M6 L=8		Screw M6 L=8		2	

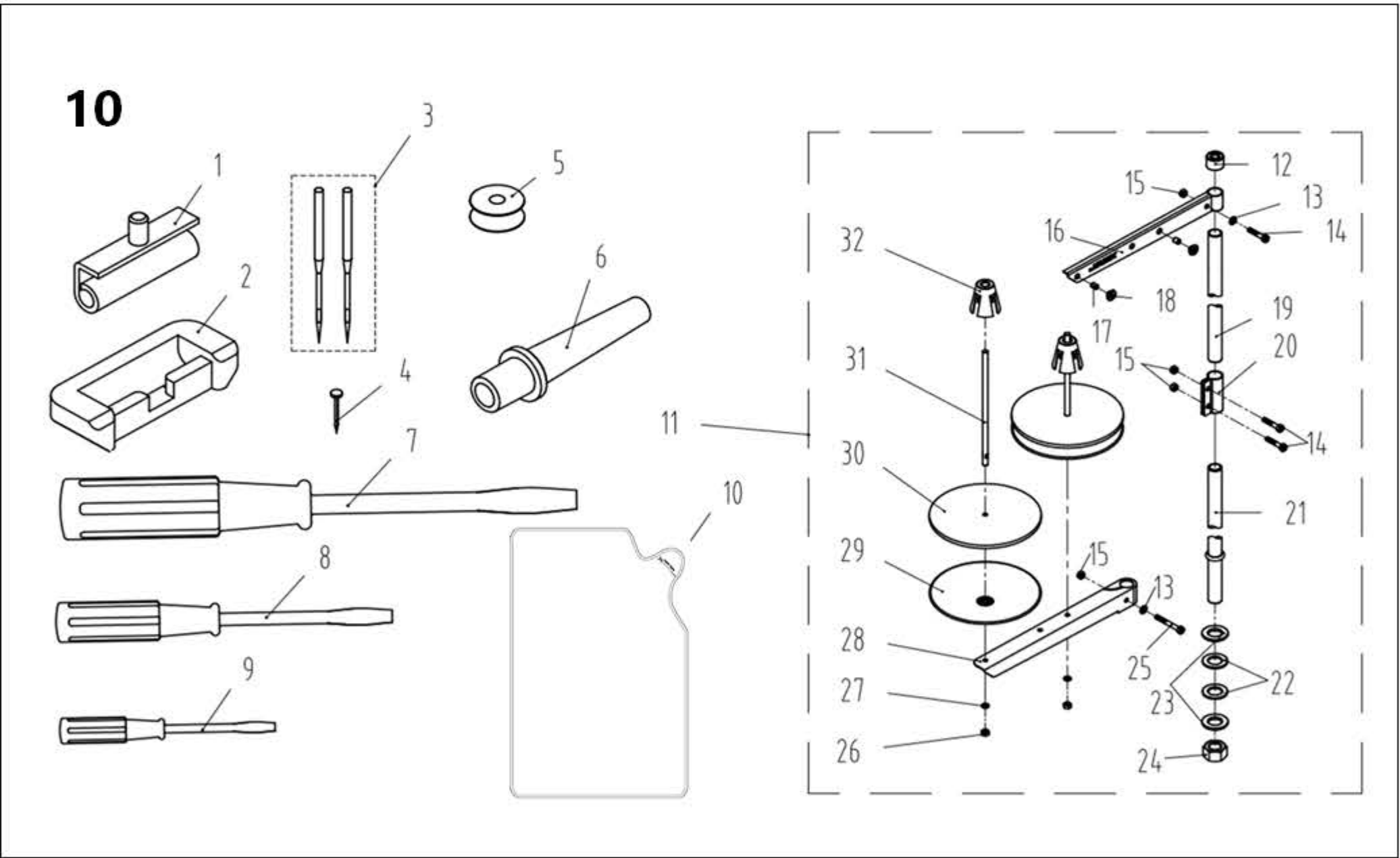


8. 油盘、膝抬压脚分组件/Oil Ceservoir & Knee Lifter Components

序号 NO	公司件号	Part NO	名称	PartName	零件描述	Description	数量	Number
1	10122022		油盘座垫		Oil reservoir rubber cushion		2	
2	110201011		油盘		Oil Reservoir		1	
3	10111005		抬压脚顶杆		Knee lifter push rod		1	
4	10122020		油盘垫		Oil Reservoir gasket		1	
5	10122021		O型圈		Rubber ring		1	
6	101S11028		螺钉SM5/16"×24 L=7		Screw SM5/16"×24 L=7		1	
7	10131001		油盘磁铁		Oil reservoir magnet		1	
8	10122023		油盘支架		Oil reservoir rubber cushion		2	
9	10112027		抬压脚双向曲柄		Knee lifter crank		1	
10	10127016		双向曲柄扭簧		Knee lifter spring		1	
11	H05010		挡圈10		Snap ring 10		1	
12	10102011		抬压脚轴		Knee lifter shaft		1	
13	101S15012		螺钉M6 L=30		Screw M6 L=30		2	
14	101S16004		螺母 M6 L=4		Nut M6 L=4		2	
15	101S12002		螺钉M6 L=26		Screw M6 L=26		1	
16	10101008		抬压脚操纵杆节头		Bearing bracket		1	
17	101S12003		螺钉M8 L=16		Screw M8 L=16		2	
18	1011202800		操纵杆组件		Knee press plate asm		1	
19	101S12004		螺钉M6 L=11		Screw M6 L=11		1	
20	10112030		操纵杆节头		Knee press plate holder		1	
21	10112029		操纵板		Knee press plate		1	
22	10112028		操纵杆		Knee lifter plate rod		1	
23	10122025		操纵杆垫		Rubber		1	
24	10122024		操纵板软垫		Knee press plate cover		1	



9. 切线装置部件/Thread Trimmer Components								
序号 NO	公司件号	Part NO	名称	PartName	零件描述	Description	数量	Number
1	113S15002		螺钉SM1/8"x44 L=9.5		Screw SM1/8"x44 L=9.5		1	
2	115019001		定刀		Secant knife		1	
3	113S17001		螺钉SM9/64×40 L=6		Screw SM9/64×40 L=6		1	
4	11312003		护针片		Needle guard patch		1	
5	201S11009		螺钉SM9/64"×40 L=5.5		Screw SM9/64"x40 L=5.5		1	
6	138S17301		螺钉M3 L=8		Screw M3 L=8		3	
7	13812303		刀架压板		Knife bracket press		1	
8	113S17002		螺钉SM11/64"×40 L=4.4		Screw SM11/64"x40 L=4.4		2	
9	11319002		活动刀		Motorial knife		1	
	11319003		活动刀(厚料)		Motorial knife (H)		1	
10	13807303		刀架		Knife bracket		1	
11	114S16004		螺母SM11/64"×40		Nut SM11/64"x40		1	
12	113S20001		连杆螺钉SM11/64"×40		hinge Screw SM11/64"x40		2	
13	13812302		连杆		Connecting rod		1	
14	13804301		切线曲柄		Thread Crank		1	
15	11322001		驱动曲柄止动块		Crank driver stopper block		1	
16	S05004		螺钉M5 L=14		Screw M5 L=14		1	
17	113803003		切线曲柄定位套		Tangent crank locating sleeve		1	
18	13827304		扭簧		Spring		1	
19	1380432400		剪线驱动组件		Crank asm		1	
20	13628003		垫片		Washer		2	
21	101S14001		螺钉SM1/4"×40 L=6		Screw SM1/4"x40 L=6		2	
22	101S14001		螺钉SM1/4"×40 L=6		Screw SM1/4"x40 L=6		1	
23	113809009		凸轮顶柱		Push rod		2	
24	13810306		凸轮		Cam		1	
25	116S14005		螺钉SM1/4"×40 L=10		Screw SM1/4"x40 L=10		1	
26	13802320		切线驱动轴		Tangent drive shaft		1	
27	H05013		挡圈6		Snap ring 6		1	
28	13812370		推板		Push plate		1	
29	N01005		螺母M4		Nut M4		2	
30	W02018		弹簧垫圈4		Washer 4		2	
31	11312006		切线磁铁支架		Solenoid bracket		1	
32	112S16006		螺母SM1/4"×40		Nut SM1/4"X40		1	
33	113822005		垫圈		Washer		1	
34	1383003300		剪线电磁铁组件		Thread trimmer solenoid asm.		1	
35	101S11026		螺钉SM15/64"x28 L=9		Screw SM15/64"x28 L=9		1	
36	138S30301		松线座螺钉		Screw		1	
37	13827303		松线扭簧		Loose wire torsion spring		1	
38	13812304		松线板		Thread release bed		1	
39	138S01302		螺钉M4 L=5		Screw M4 L=5		1	
40	11230004		14孔接线器		Plug		1	
41	11230005		电线插针		Pin		1	
42	101S11002		螺钉SM11/64"x40 L=5.5		Screw SM11/64"x40 L=5.5		1	



10. 机头附件/Machine Head Accessories								
序号 NO	公司件号	Part NO	名称	PartName	零件描述	Description	数量	Number
1	1011203100		机头连接钩部件		Hinge component		2	
2	10122060		机头连接钩座		Head connecting rubber cushion		2	
3	10117012		机针DB×1#14		NeedleDB×1#14		10	
	10117002		机针DP×5#21 (厚料)		NeedleDP×5#21 (H)		4	
4	101S30010		机头连接钩座钉 (P19)		Nail (P19)		6	
5	10118003		梭心		Bobbin		3	
6	115011003		机头支柱		Machine head rest pin		1	
7	20731047		螺丝刀 (大)		Screw driver (large)		1	
8	10131003		螺丝刀 (中)		Screw driver (medium)		1	
9	10131004		螺丝刀 (小)		Screw driver (small)		1	
10	1381101200		油壶组件		Oiler component		1	
11	11023100400		线架组件		Thread stand asm		1	
12	20131019		线架杆顶防护橡皮		Spool rest rod rubber cap		1	
13	W01047		垫圈M5		Washer M5		2	
14	S04050		螺栓M5 L=16		Screw M5 L=16		3	
15	N01034		螺母M5		Nut M5		4	
16	13831022		上线架过线杆		Spool rest arm upper		1	
17	10113011		过线圈 (内)		Thread guide ring		2	
18	10113010		过线圈 (外)		Thread guide ring		2	
19	13831019		线架杆上节		Spool rest rod upper		1	
20	13831021		线架杆接头		Spool rest rod joint		1	
21	13831020		线架杆下节		Spool rest rod lower		1	
22	10122106		橡胶垫圈		Spool rest rod rubber ring		2	
23	W01052		垫圈M16		Washer M16		2	
24	N02008		螺母M16		Spool rest rod nut M16		1	
25	S04051		螺栓M5 L=31.5		screw M5 L=31.5		1	
26	N01034		螺母M5		Nut M5		2	
27	W03002		弹簧垫圈 5		Spring washer 5		2	
28	13831023		下线架过线杆		Spool rest arm lower		1	
29	13831024		线盘		Spool rest		2	
30	20131010		线盘垫		Spool rest cushion		2	
31	20131006		线盘钉		Spool pin		2	
32	13831025		线团防松垫		Spool retainer		2	

杰克科技股份有限公司

杰克缝纫机

全球销量遥遥领先

公司地址(Address of Company) :

中国浙江省台州市椒江区三甲东海大道东段1008号

NO.1008 , DONGHAI AVENUE EAST, JIAOJIANG DISTRICT,TAIZHOU CITY, ZHEJIANG

邮编(Zip Code): 318000

国内销售部(Domestic Trade Department):

电话(TEL): 0086-0576-88177788 88177789

传真(FAX): 0086-0576-88177758

国贸销售部(International Trade Department):

电话(TEL): 0086-0576-88177782 88177774

传真(FAX): 0086-0576-88177787

服务热线: 400-8876858

<http://www.chinajack.com>

资料如有更改, 恕不另行通知, 以实物为准。

You will be not informed if the file has been revised.Please set sample as standard.

日期: 2022.5.25



请您扫下杰克服务号