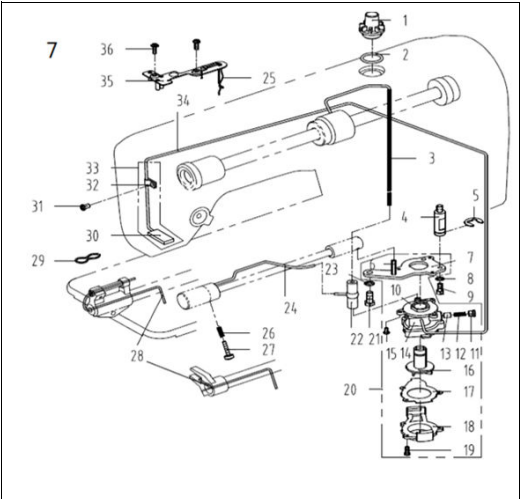


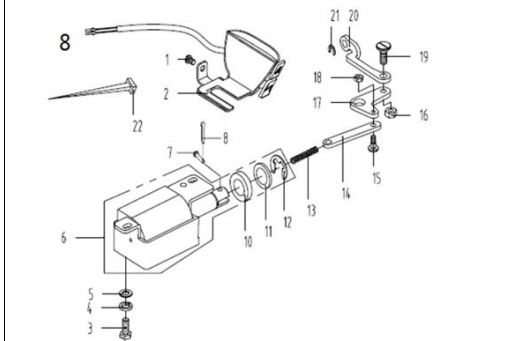
6. 切线装置部件/Thread Trimmer Components

序号NO	公司件号	Part NO.	名称	PartName	零件描述	Description	数量	Number
1	11355002		尼龙固定螺钉 S ML8 *x4 L=9.5	Screw SM1/8"x4 L=9.5	Screw SM1/8"x4 L=9.5		1	1
2	11399001		刀片	Secant knife	Secant knife		1	1
3	11357001		螺钉 SM9/64"x40	Screw SM9/64"x40	Screw SM9/64"x40		1	1
4	1130003		护针片	Needle guard patch	Needle guard patch		1	1
5	20510009		螺钉 SM9/64"x40 L=5.5	Screw SM9/64"x40 L=5.5	Screw SM9/64"x40 L=5.5		1	1
6	11311211		开槽沉头螺钉 M3*8	Screw M3*8	Screw M3*8		3	3
7	1130203		刀架压板	Knife bracket press	Knife bracket press		1	1
8	1130703		刀架	Knife bracket	Knife bracket		1	1
9	11310002		活动刀(原料长槽)	Motarial knife	Motarial knife		1	1
10	11310003		活动刀(原料长槽)	Motarial knife	Motarial knife		1	1
11	11310002		活动刀(原料长槽)	Motarial knife	Motarial knife		1	1
12	11310001		螺母 SM1/64"x40	Nut SM1/64"x40	Nut SM1/64"x40		2	2
13	11310001		压杆螺钉 SM1/64"x40	Hinge Screw SM1/64"x40	Hinge Screw SM1/64"x40		2	2
14	11310001		压杆螺钉 SM1/64"x40	Hinge Screw SM1/64"x40	Hinge Screw SM1/64"x40		2	2
15	11310001		压杆螺钉 SM1/64"x40	Hinge Screw SM1/64"x40	Hinge Screw SM1/64"x40		2	2
16	11310001		压杆螺钉 SM1/64"x40	Hinge Screw SM1/64"x40	Hinge Screw SM1/64"x40		2	2
17	11310001		压杆螺钉 SM1/64"x40	Hinge Screw SM1/64"x40	Hinge Screw SM1/64"x40		2	2
18	11310001		压杆螺钉 SM1/64"x40	Hinge Screw SM1/64"x40	Hinge Screw SM1/64"x40		2	2
19	11310001		压杆螺钉 SM1/64"x40	Hinge Screw SM1/64"x40	Hinge Screw SM1/64"x40		2	2
20	11310001		压杆螺钉 SM1/64"x40	Hinge Screw SM1/64"x40	Hinge Screw SM1/64"x40		2	2
21	11310001		压杆螺钉 SM1/64"x40	Hinge Screw SM1/64"x40	Hinge Screw SM1/64"x40		2	2
22	11310001		压杆螺钉 SM1/64"x40	Hinge Screw SM1/64"x40	Hinge Screw SM1/64"x40		2	2
23	11310001		压杆螺钉 SM1/64"x40	Hinge Screw SM1/64"x40	Hinge Screw SM1/64"x40		2	2
24	11310001		压杆螺钉 SM1/64"x40	Hinge Screw SM1/64"x40	Hinge Screw SM1/64"x40		2	2
25	11310001		压杆螺钉 SM1/64"x40	Hinge Screw SM1/64"x40	Hinge Screw SM1/64"x40		2	2
26	11310001		压杆螺钉 SM1/64"x40	Hinge Screw SM1/64"x40	Hinge Screw SM1/64"x40		2	2
27	11310001		压杆螺钉 SM1/64"x40	Hinge Screw SM1/64"x40	Hinge Screw SM1/64"x40		2	2
28	11310001		压杆螺钉 SM1/64"x40	Hinge Screw SM1/64"x40	Hinge Screw SM1/64"x40		2	2
29	11310001		压杆螺钉 SM1/64"x40	Hinge Screw SM1/64"x40	Hinge Screw SM1/64"x40		2	2
30	11310001		压杆螺钉 SM1/64"x40	Hinge Screw SM1/64"x40	Hinge Screw SM1/64"x40		2	2
31	11310001		压杆螺钉 SM1/64"x40	Hinge Screw SM1/64"x40	Hinge Screw SM1/64"x40		2	2
32	11310001		压杆螺钉 SM1/64"x40	Hinge Screw SM1/64"x40	Hinge Screw SM1/64"x40		2	2
33	11310001		压杆螺钉 SM1/64"x40	Hinge Screw SM1/64"x40	Hinge Screw SM1/64"x40		2	2
34	11310001		压杆螺钉 SM1/64"x40	Hinge Screw SM1/64"x40	Hinge Screw SM1/64"x40		2	2
35	11310001		压杆螺钉 SM1/64"x40	Hinge Screw SM1/64"x40	Hinge Screw SM1/64"x40		2	2
36	11310001		压杆螺钉 SM1/64"x40	Hinge Screw SM1/64"x40	Hinge Screw SM1/64"x40		2	2
37	11310001		压杆螺钉 SM1/64"x40	Hinge Screw SM1/64"x40	Hinge Screw SM1/64"x40		2	2
38	11310001		压杆螺钉 SM1/64"x40	Hinge Screw SM1/64"x40	Hinge Screw SM1/64"x40		2	2
39	11310001		压杆螺钉 SM1/64"x40	Hinge Screw SM1/64"x40	Hinge Screw SM1/64"x40		2	2
40	11310001		压杆螺钉 SM1/64"x40	Hinge Screw SM1/64"x40	Hinge Screw SM1/64"x40		2	2



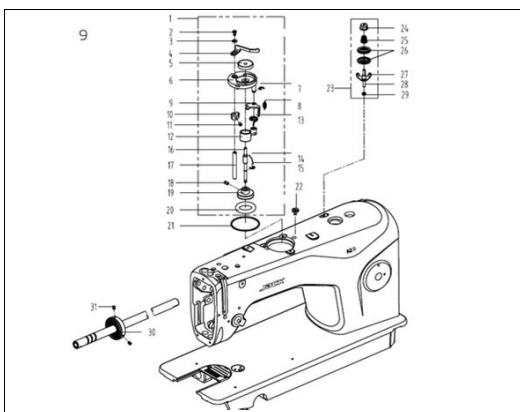
7. 消滑组件/Oil Lubrication Components

序号NO	公司件号	Part NO.	名称	PartName	零件描述	Description	数量	Number
1	1121004		滑窗	Oil sight window	Oil sight window		1	1
2	1020029		橡胶圈	Rubber ring	Rubber ring		1	1
3	1040001		上轴油管	Main shaft oil tube	Main shaft oil tube		1	1
4	11253005		油泵连接螺栓	Oil pump connecting stud	Oil pump connecting stud		1	1
5	11329010		开口销10	Snap ring 10	Snap ring 10		1	1
6	1010001		轴驱动轴油管	Hook driving shaft oil tube	Hook driving shaft oil tube		1	1
7	1010020		油泵安装板	Oil pump installing base	Oil pump installing base		1	1
8	1020002		弹簧	Spring washer	Spring washer		1	1
9	20952001		压脚螺钉 M11/8"4 * x40 L=10.5	Screw SM11/8"4 * x40 L=10.5	Screw SM11/8"4 * x40 L=10.5		1	1
10	1010302		油泵体衬套	Oil pump bushing	Oil pump bushing		1	1
11	10103007		柱塞螺钉	Plunger screw	Plunger screw		1	1
12	1010203		柱塞套	Plunger spring	Plunger spring		1	1
13	1010208		柱塞杆	Plunger	Plunger		1	1
14	1010001		油泵体	Oil pump	Oil pump		1	1
15	1010004		油泵螺钉	Screw SM1/8"x40 L=10	Screw SM1/8"x40 L=10		3	3
16	1010003		油泵轴	Oil pump impeller	Oil pump impeller		1	1
17	1010021		油泵轴衬套	Oil pump impeller cover	Oil pump impeller cover		1	1
18	1010007		油泵轴	Lubricating oil pump cover	Lubricating oil pump cover		1	1
19	1010003		螺钉	Screw	Screw		3	3
20	10100000		油泵轴衬套	Lubricating oil pump component	Lubricating oil pump component		1	1
21	116530003		油泵轴衬套	Screw SM15/64 * x28 L=14.5	Screw SM15/64 * x28 L=14.5		1	1
22	1010001		橡胶管接头	Rubber joint	Rubber joint		1	1
23	1010004		油泵轴衬套	Screw SM15/64 * x28 L=14.5	Screw SM15/64 * x28 L=14.5		1	1
24	1132003		油泵轴	Hook oil tube	Hook oil tube		1	1
25	10123010		油线	Oil wick	Oil wick		1	1
26	1132004		油线	Spring	Spring		1	1
27	10123001		油线	Screw	Screw		1	1
28	10423005		油线	Oil wick	Oil wick		1	1
29	1012005		油线	Oil felt clamp	Oil felt clamp		1	1
30	1012006		油线	Oil felt felt	Oil felt felt		1	1
31	1012006		油线	Screw SM15/64 * x28 L=7	Screw SM15/64 * x28 L=7		1	1
32	1012003		油线	Oil tube clamp	Oil tube clamp		1	1
33	1012007		油线	Oil return tube component	Oil return tube component		1	1
34	1012008		油线	Oil return tube	Oil return tube		1	1
35	1012005		油线	Oil felt clamp	Oil felt clamp		1	1
36	1012010		油线	Screw SM15/64 * x28 L=11	Screw SM15/64 * x28 L=11		2	2



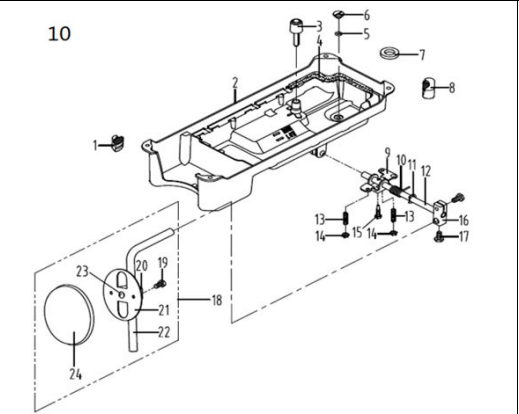
8. 自动倒送料开关组件/Automatic Reverse Feed Components

序号NO	公司件号	Part NO.	名称	PartName	零件描述	Description	数量	Number
1	1010104		橡胶管接头	Screw SM15/64 * x28 L=7	Screw SM15/64 * x28 L=7		1	1
2	116530003		油泵轴衬套	Auto reverse feed switch asm	Auto reverse feed switch asm		1	1
3	116530003		油泵轴衬套	Screw SM15/64 * x28 L=14.5	Screw SM15/64 * x28 L=14.5		2	2
4	1010004		油泵轴衬套	GB/T93-1987 弹簧垫圈 M6	Spring washer M6		2	2
5	116530003		油泵轴衬套	GB/T93-1987 弹簧垫圈 M6	Spring washer M6		2	2
6	116530003		油泵轴衬套	GB/T93-1987 弹簧垫圈 M6	Spring washer M6		2	2
7	116530003		油泵轴衬套	GB/T93-1987 弹簧垫圈 M6	Spring washer M6		2	2
8	116530003		油泵轴衬套	GB/T93-1987 弹簧垫圈 M6	Spring washer M6		2	2
9	116530003		油泵轴衬套	GB/T93-1987 弹簧垫圈 M6	Spring washer M6		2	2
10	116530003		油泵轴衬套	GB/T93-1987 弹簧垫圈 M6	Spring washer M6		2	2
11	116530003		油泵轴衬套	GB/T93-1987 弹簧垫圈 M6	Spring washer M6		2	2
12	116530003		油泵轴衬套	GB/T93-1987 弹簧垫圈 M6	Spring washer M6		2	2
13	116530003		油泵轴衬套	GB/T93-1987 弹簧垫圈 M6	Spring washer M6		2	2
14	116530003		油泵轴衬套	GB/T93-1987 弹簧垫圈 M6	Spring washer M6		2	2
15	116530003		油泵轴衬套	GB/T93-1987 弹簧垫圈 M6	Spring washer M6		2	2
16	116530003		油泵轴衬套	GB/T93-1987 弹簧垫圈 M6	Spring washer M6		2	2
17	116530003		油泵轴衬套	GB/T93-1987 弹簧垫圈 M6	Spring washer M6		2	2
18	116530003		油泵轴衬套	GB/T93-1987 弹簧垫圈 M6	Spring washer M6		2	2
19	116530003		油泵轴衬套	GB/T93-1987 弹簧垫圈 M6	Spring washer M6		2	2
20	116530003		油泵轴衬套	GB/T93-1987 弹簧垫圈 M6	Spring washer M6		2	2
21	116530003		油泵轴衬套	GB/T93-1987 弹簧垫圈 M6	Spring washer M6		2	2
22	116530003		油泵轴衬套	GB/T93-1987 弹簧垫圈 M6	Spring washer M6		2	2
23	116530003		油泵轴衬套	GB/T93-1987 弹簧垫圈 M6	Spring washer M6		2	2
24	116530003		油泵轴衬套	GB/T93-1987 弹簧垫圈 M6	Spring washer M6		2	2



9. 油盘、膝抬压脚分组件/Oil Reservoir, Knee Lifter Components

序号NO	公司件号	Part NO.	名称	PartName	零件描述	Description	数量	Number
1	113830900		橡胶圈	Bobbin winder asm	Bobbin winder asm		1	1
2	11451008		螺钉 M4x6	Screw M4x6	Screw M4x6		1	1
3	1010001		橡胶圈	Bobbin winder asm	Bobbin winder asm		1	1
4	1010001		橡胶圈	Bobbin winder asm	Bobbin winder asm		1	1
5	1010001		橡胶圈	Bobbin winder asm	Bobbin winder asm		1	1
6	113830900		橡胶圈	Bobbin winder asm	Bobbin winder asm		1	1
7	113830900		橡胶圈	Bobbin winder asm	Bobbin winder asm		1	1
8	113830900		橡胶圈	Bobbin winder asm	Bobbin winder asm		1	1
9	113830900		橡胶圈	Bobbin winder asm	Bobbin winder asm		1	1
10	113830900		橡胶圈	Bobbin winder asm	Bobbin winder asm		1	1
11	113830900		橡胶圈	Bobbin winder asm	Bobbin winder asm		1	1
12	113830900		橡胶圈	Bobbin winder asm	Bobbin winder asm		1	1
13	113830900		橡胶圈	Bobbin winder asm	Bobbin winder asm		1	1
14	113830900		橡胶圈	Bobbin winder asm	Bobbin winder asm		1	1
15	113830900		橡胶圈	Bobbin winder asm	Bobbin winder asm		1	1
16	113830900		橡胶圈	Bobbin winder asm	Bobbin winder asm		1	1
17	113830900		橡胶圈	Bobbin winder asm	Bobbin winder asm		1	1
18	113830900		橡胶圈	Bobbin winder asm	Bobbin winder asm		1	1
19	113830900		橡胶圈	Bobbin winder asm	Bobbin winder asm		1	1
20	113830900		橡胶圈	Bobbin winder asm	Bobbin winder asm		1	1
21	113830900		橡胶圈	Bobbin winder asm	Bobbin winder asm		1	1
22	113830900		橡胶圈	Bobbin winder asm	Bobbin winder asm		1	1
23	113830900		橡胶圈	Bobbin winder asm	Bobbin winder asm		1	1
24	113830900		橡胶圈	Bobbin winder asm	Bobbin winder asm		1	1



10. 油盘、膝抬压脚分组件/Oil Reservoir, Knee Lifter Components

序号NO	公司件号	Part NO	名称	PartName	零件描述	Description	数量	Number
1	1010002		膝盖垫圈	Oil reservoir rubber cushion	Oil reservoir rubber cushion		2	2
2	1010006		油盘	Oil Reservoir	Oil Reservoir		1	1
3	1010005		油盘顶杆	Knee lifter push rod	Knee lifter push rod		1	1
4	1010005		油盘隔套	Oil Reservoir gasket	Oil Reservoir gasket		1	1
5	1010005		油盘	Oil Reservoir	Oil Reservoir		2	2
6	1010008		膝盖轴 M6*16/24 L=7	Screw M6*16/24 L=7	Screw M6*16/24 L=7		2	2
7	1010001		膝盖磁吸	Oil reservoir magnet	Oil reservoir magnet		1	1
8	1010003		膝盖上盖	Oil reservoir rubber cushion	Oil reservoir rubber cushion		2	2
9	1010007		膝盖轴销	Knee lifter crank	Knee lifter crank		1	1
10	1010006		油盘衬套	Knee lifter spring	Knee lifter spring		1	1
11	405010		CB/T896-1986的链销	Snag ring	Snag ring		1	1
12	1010001		油盘顶杆	Knee lifter shaft	Knee lifter shaft		1	1
13	10105012		油盘衬套到膝盖顶杆 M6 L=30	Screw M6 L=30	Screw M6 L=30		2	2
14	10105014		油盘衬套到膝盖顶杆 M6 L=4	Nut M6 L=4	Nut M6 L=4		2	2
15	10105002		油盘衬套到膝盖 M6 L=26	Screw M6 L=26	Screw M6 L=26		1	1
16	1010008		膝盖轴衬套衬头	Bearing bracket	Bearing bracket		1	1
17	10105003		膝盖衬套到膝盖 M6 L=16	Screw M6 L=16	Screw M6 L=16		2	2
18	1010006		膝盖轴衬头	Knee press plate asm	Knee press plate asm		1	1
19	10105004		膝盖顶杆 M6 L=11	Screw M6 L=11	Screw M6 L=11		1	1
20	1010030		膝盖衬头	Knee press plate holder	Knee press plate holder		1	1
21	1010029		膝盖板	Knee press plate	Knee press plate		1	1
22	1010028		膝盖板	Knee lifter plate	Knee lifter plate		1	1
23	1010025		膝盖衬垫	Rubber	Rubber		1	1
24	1010025		膝盖板衬垫	Knee press plate cover	Knee press plate cover		1	1