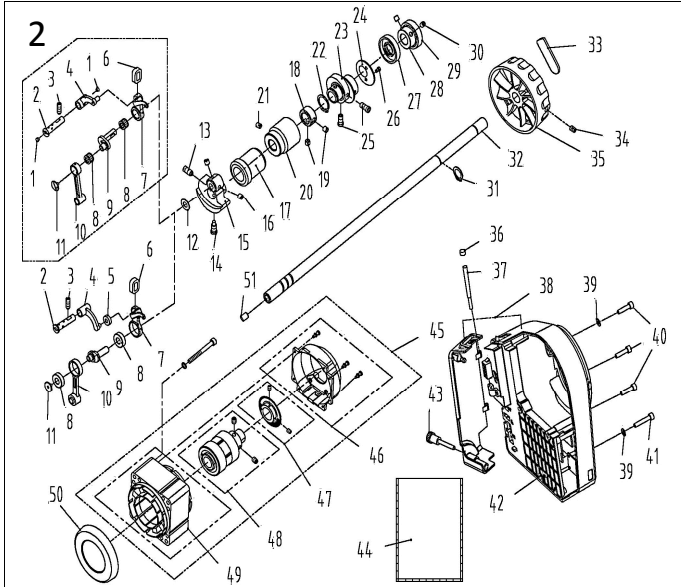


1. 机壳、外装部件/Machine Frame & Miscellaneous Cover Components

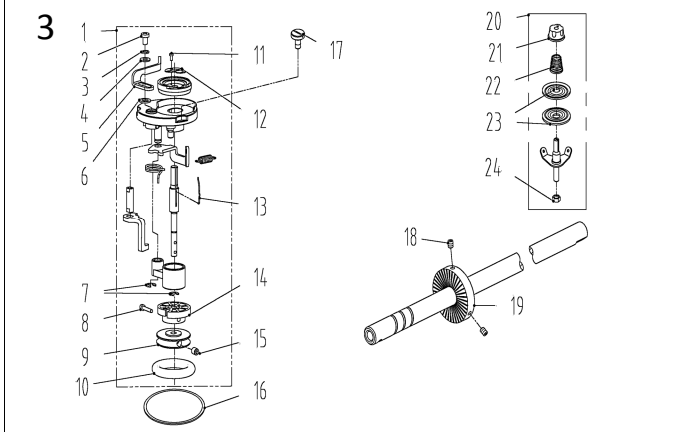
序号 NO.	公司件号	Part NO.	名称	PartName	零件描述	Description	数量	Number
1	101S11001		后盖板螺钉	Screw SM3/16"×28 L=9			3	
2	10122003		底板调节孔螺母	Rubber plug			2	
3	14437001		底板商标牌	Head card			1	
4	14401005		面板	Face plate			1	
5	13813005		左线钩	Thread guide left			1	
6	101S11007		右线钩螺钉	Screw SM11/64"×40 L=6			2	
7	303979		底板(喷漆)	Face plate asm			1	
8	14422001		针杆油封套	Needle bar oil seal set			1	
9	14422004		面板垫	Face plate gasket			1	
10	13122003		挑线连杆销轴孔套	Rubber plug			2	
11	10122005		挑线连杆销轴孔套	Rubber plug			2	
12	10122004		针杆曲柄销轴孔套	Rubber plug			2	
13	101S11004		挑线杆护罩螺钉SM3/16"×28 L=7	Screw SM3/16"×28 L=7			2	
14	13812018		挑线杆防护罩	Thread take-up lever cover			1	
15	13S12004		三线线钩	3-hole thread guide			1	
16	11419001		割线刀	Knife			1	
17	114S11015		割线刀螺钉	Screw			1	
18	21022007		油圈	Rubber plug			1	
19	21012018		油封垫	Oil sealing washer			1	
20	13822001		操作屏孔套	Rubber plug			3	
21	14412021		隔油板	Oil preventing plate			1	
22	141S11002		圆柱头螺钉SM3/16"×28	Screw SM3/16"×28			2	
23	14423002		隔油板油圈	Oil cotton			1	
24	14422005		后盖板垫	Side plate gasket			1	
25	10128016		螺栓橡胶垫圈(隔)	Washer			1	
26	13812007		凸套	Buckle			1	
27	904021		螺钉	Screw			1	
28	101S11001		后盖板螺钉SM3/16"×28 L=9	Screw SM3/16"×28 L=9			6	
29	303978		后盖板(喷漆)	Side plate			1	
30	14422002		拾压脚电磁铁固定垫	Flat pad			1	
31	303980		拾压脚电磁铁盖板(喷漆)	Presser foot electromagnet cover plate			1	
32	101S11033		油管凸板螺钉	Screw			1	
33	14412022		电线压板	Wire clamp			1	
34	101S11001		后盖板螺钉SM3/16"×28 L=9	Screw SM3/16"×28 L=9			12	
35	10122006		送料调节孔螺母	Rubber plug			1	
36	10122007		下轴工艺孔套	Rubber plug			1	
37	138505001		操作面板螺钉	Screw			2	
38	14430021		操作面板组件(橡胶壳)(装包)	Control panel/qxing			1	
39	14422007		装饰条	Decorative article			1	
40	14437002		机头商标牌	Head card			1	
41	14122001		橡皮套(四孔)	Rubber plug			1	
42	1411300400		小夹线器组件	Thread tension asm.			1	
43	141S16019		小夹线器螺母	Thread tension nut			1	
44	11227001		小夹线弹簧	Thread tension spring			1	
45	14112017		小夹线板	Thread tension disk			2	
46	13810088		小夹线器螺母柱	Thread tension post			1	
47	13812066		过线板	Thread tension guide plate			1	
48	138508006		小夹线器固定螺钉SM3/16"×28 L=7	Screw SM3/16"×28 L=7			1	
49	141130030		夹线器组件(橡胶)	Thread tension asm. (-H)			1	
50	141S16013		夹线器螺母柱(橡胶)	Thread tension nut			1	
51	10112007		夹线器脚踏板	Thread disk rotating stopper			1	
52	10127002		夹线器弹簧	Thread tension spring A			1	
53	11427050		夹线器弹簧(厚料)	Thread tension spring A (-H)			1	
54	14112015		夹线板	Thread tension disk			2	
55	14112016		松线板	Disk stopper			1	
56	141S30001		夹线螺钉	Thread tension post			1	
57	10127031		挑线簧	Thread take-up spring			1	
58	10103011		挑线簧(厚料)	Threadtake-up spring (-H)			1	
59	10103011		挑线簧调节座	Threadtension base			1	
60	101S15005		夹线器固定螺钉SM9/64"×40 L=5.5	Screw SM9/64"×40 L=5.5			1	
61	10122014		挑线簧调节座O型圈	Rubber ring			1	
62	101S15010		左轴螺钉	Screw SM15/64"×28 L=10.5			1	
63	14403003		松线钉支架套	Loose wire nail support sleeve			1	
64	1442600300		松线钉组件	Loose wire nail asm.			1	
65	1443000100		电子夹线器组件	Nest less e-device			1	
66	207S14007		G8/T80 凹端固定螺钉 M4×6	Screw M4X6			1	
67	13113001		固定式螺线钩	Thread guide			1	
68	401S16001		螺母SM9/64"×40	Nut SM9/64"×40			1	
69	10113004		右线钩	Thread guide right			1	
70	13812019		卷边器座	Ruler stop seat			1	
71	101S11002		卷边器螺钉	Screw SM11/64"×40 L=5.5			1	
72	131S15001		针板	Needle plate			1	
73	131S15002		针板(厚料)	Needle plate (-H)			1	
74	104S12000		针板螺钉	Screw SM11/64"×40			2	
75	140S12001		压板夹块	Machine head stud			2	
76	101S11019		限位板螺钉	Slide plate			2	
77	10127009		限位板	Slide plate spring			1	
78	101S15002		限位板	Screw SM3/32"×56 L=2			1	

零件手册
Parts Manual

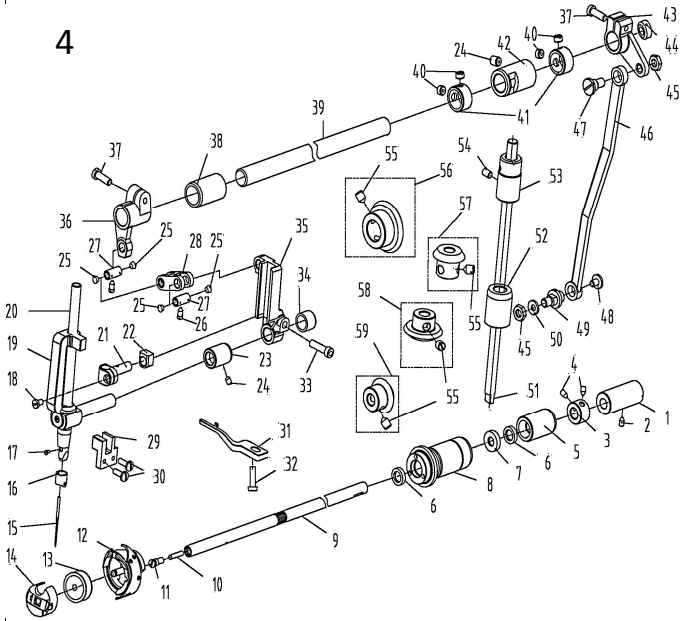


2. 上轴、挑线部件/Main Shaft & Thread Take-up Components

序号NO	公司件号	Part NO	名称	PartName	零件描述	Description	数量	Number
1	13111002		塞子	Plug			2	
2	12226001		挑线连杆销	Thread take-up connecting rod pin			1	
3	101S15001		上轴螺钉	Screw SM15/64"×28 L=15			1	
4	12205001		挑线连杆(厚料)	Thread take-up connecting rod (-H)			1	
5	12305010		G8/T28 轴承695ZZ	Bearing 695ZZ			1	
6	14422008		挑线杆分组件	Thread take-up lever rubber			1	
7	1223800100		挑线杆分组件	Thread take-up lever asm.			1	
8	1313800200		挑线杆分组件(厚料)	Thread take-up lever asm. (-H)			1	
9	904008		G8/T28 轴承698ZZ	Bearing 698ZZ			2	
10	10124001		挑线杆滚针轴承(厚料)	Needle bearing (-H)			2	
11	13810012		挑线曲柄分组件	Thread take-up crank			1	
12	11310010		挑线曲柄分组件(厚料)	Thread take-up crank (-H)			1	
13	1440500400		针杆连杆	Needle bar connecting rod			1	
14	10105002		针杆连杆(厚料)	Needle bar connecting rod (-H)			1	
15	101S17001		挑线曲柄螺钉(左旋)	Screw			1	
16	10112003		针杆曲柄护板	Needle bar crank protecting plate			1	
17	101S15004		针杆曲柄固定螺钉 SM9/32"×28 L=16	Screw SM9/32"×28 L=16			1	
18	101S11003		针杆曲柄固定螺钉 SM9/32"×28 L=16	Screw SM9/32"×28 L=16			1	
19	13804001		针杆曲柄	Needle bar crank			1	
20	10404001		针杆曲柄(厚料)	Needle bar crank (-H)			1	
21	101S15002		送料轴固定螺钉SM1/4"×40 L=6	Screw SM1/4"×40 L=6			2	
22	1440300200		送料轴固定螺钉	Main shaft bushing front			1	
23	10108001		上轴盖帽	Main shaft thrust collar			1	
24	101S14001		上轴中套套	Main shaft bushing mid			2	
25	101S15006		夹线器螺钉 SM15/64"×28 L=7	Screw SM15/64"×28 L=7			1	
26	H03002		凸套20	Snap ring 20			1	
27	131S10014		送料偏心轮	Feed eccentric cam			1	
28	101120017		送料偏心轮盖板	Cover plate			1	
29	101S11013		送料偏心轮螺钉 SM1/4"×40 L=13	Screw SM1/4"×40 L=13			2	
30	11310003		送料偏心轮螺钉 SM1/4"×40 L=5	Screw SM9/64"×40 L=5			2	
31	14422009		上轴后油封	Oil seal			1	
32	14403008		轴承压套	Bearing bush			1	
33	806023		G8/T276-2013 轴承6104-2RS	Needle bearing			1	
34	3010018		G8/T80 凹端固定螺钉 M6×0.75×6	Screw M6×0.75×6			2	
35	H03001		G8/T894.1-1986凸套15	Snap ring 15			1	
36	14402001		上轴	Main shaft			1	
37	13811021		手轮胶条	Handwheel lable			1	
38	510009		螺钉	Screw			2	
39	302830		手轮(喷漆)	Handwheel			1	
40	12922015		橡皮圈	Rubber plug			1	
41	13826009		限位台阶销	Pin			1	
42	1441103000		一体机电控箱壳组件(橡胶壳)	Electronic control box			1	
43	W01009		G8/T97.1-1.985垫圈 5	Washer 5			2	
44	114S13001		直轴电机螺钉M5×20	Screw M5×20			3	
45	114S30001		螺帽(内六角)M5×25	Screw M5×25			1	
46	14130002		一体机电控组件(橡胶壳)	Electronic control box			1	
47	144S30001		电控后侧盖螺钉	Screw			1	
48	13831013		塑料壳28x18x18mm厚0.03mm	Plastic bag 28cmx18cmx0.3mm			1	
49	13833050		光电伺服电机(橡胶壳)	Servo motor			1	
50	1383300700		电机壳罩组件(橡胶壳)	Encoder housing assembly			1	
51	1383300900		电机壳罩组件	Motor/gating sensor asm			1	
52	1383300400		电机定子总成	Motor rotor			1	
53	13833003		电机定子总成(橡胶壳)	Motor stator casing			1	
54	13811060		绝缘后护罩	Insulating shield			1	
55	10122012		上轴孔套	Rubber plug			1	

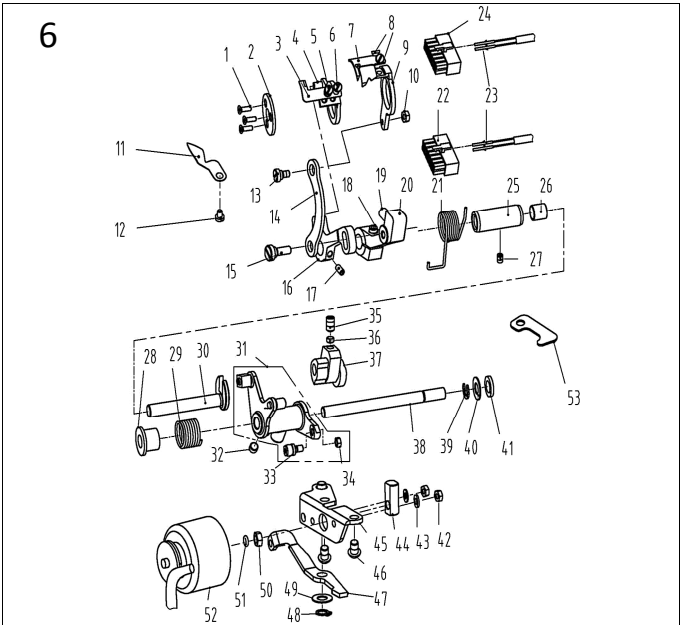


4



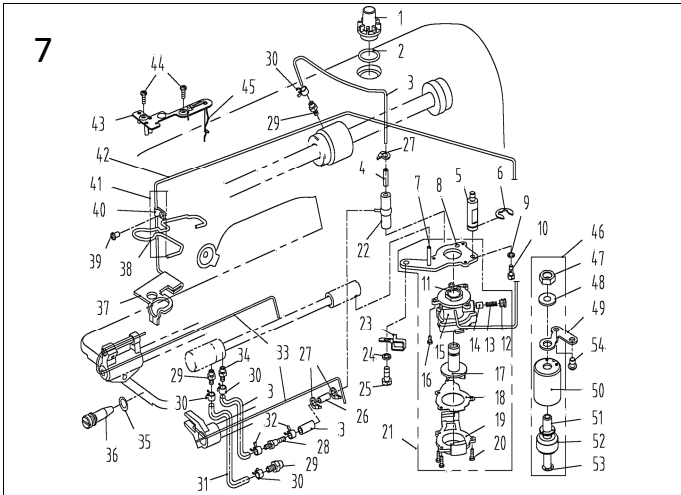
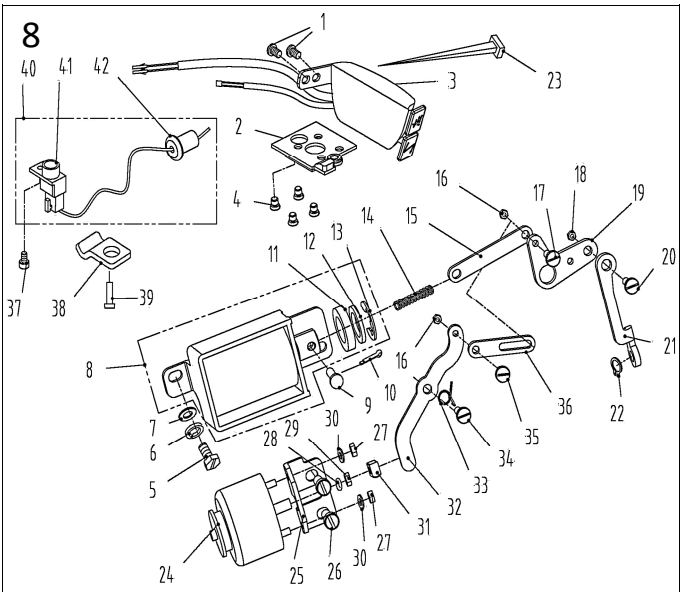
4. 杆、轴、下轴部件/Needle bar,Upright Shaft & Hook Driving Shaft Components

序号NO	公司件号	Part NO.	名称	PartName	零件描述	Description	数量	Number
1	13803037		下轴后轴套		Hook driving shaft bushing back		1	
2	113S14020		下轴后套螺钉SM11/64"×40 L=6		Screw SM11/64"×40 L=6		1	
3	10108002		下轴挡圈		Hook driving shaft snap ring		1	
4	101S11012		下轴挡圈螺钉 SM11/64"×40 L=4.8		Screw SM11/64"×40 L=4.8		2	
5	14003004		下轴中套		Lower shaft middle bushing		1	
6	11522001		油封组件12		oil seal 12		2	
7	11422001600		油封组件18		oil seal 18		1	
8	14103004		下轴前轴套组件		Lower shaft before bushing asm		1	
9	14402003		下轴		Hook driving shaft		1	
10	13823001		下轴限油芯		Oil wick		1	
11	101S30005		下轴限位螺钉		set screw		1	
12	11418003		广濶中厚料厚板(扩大辅助范围)		Hook asm (Hirose)		1	
13	11418004		广濶中厚料厚板(扩大辅助范围)		Hook asm (Hirose) (-H)		1	
14	10118003		核心		Bobbin		1	
15	11218504		核心		Bobbin case asm.		1	
16	10117001		机针 (14#)		Needle (14#)		1	
17	10117002		机针 (21#)		Needle (21#)		1	
18	10113002		针线钩		Needle bar thread guide		1	
19	11412063		针线钩(厚料)		Needle bar thread guide (-H)		1	
20	104S11006		变针螺钉(进口) SM1/8"×44 L=4.5		Screw SM1/8"×44 L=4.5		1	
21	101S11005		针杆连接柱螺钉 SM9/64"×40 L=6		Screw SM9/64"×40 L=6		1	
22	1440100100		针杆支架组件		Needle bar support asm		1	
23	14402012		针杆 (DLC)		Needle bar		1	
24	14402014		针杆 (DLC) (厚料)		Needle bar (-H)		1	
25	14438002		针杆连接柱 (DLC)		Needle bar connecting rod		1	
26	14409005		针杆连接柱滑块		Slide block		1	
27	14403006		针杆支架套		Needle bar stand collar		1	
28	138508006		小夹线器螺钉SM3/16"×28 L=7		Screw SM3/16"×28 L=7		2	
29	13111002		塞子		Plug		4	
30	131S10004		螺钉 9/64"×40 L=6		Screw 9/64"×40 L=6		2	
31	14426007		驱动连接杆		Driving connecting rod pin		2	
32	14405002		驱动连杆		Driving connecting rod		1	
33	14409004		针杆支架导轨		Needle bar guide		1	
34	101S11010		压脚扳手螺钉		Presser foot screws		2	
35	10112016		压脚定位钩		Finger positioner		1	
36	10112032		压脚定位钩(厚料)		Finger positioner (-H)		1	
37	116S11005		牙架自锁螺钉 SM11/64"×40 L=13		Screw SM11/64"×40 L=13		1	
38	144S13001		内六角圆柱头螺钉 SM3/16"×28		Screw 3/16"×28		1	
39	131807001		滚针轴承		Needle bearing		2	
40	14349003		滑块导轨		Sliding block guide rail		1	
41	14440001		针送前驱动曲柄		Sent front drive the crank pin		1	
42	101S11016		送料曲柄螺钉 SM3/16"×28 L=14		Screw 3/16"×28 L=14		2	
43	14403004		针推驱动前套		Before the needle swing axle sleeve		1	
44	14402009		针杆推轴钉		Needle bar swing axle		1	
45	13S155004		上轴套调整螺钉		Screw of shaft damping ring		1	
46	13108002		挡圈		Ring		2	
47	14403005		针推后驱动套		After the needle swing axle sleeve		1	
48	14404002		针送后驱动曲柄		After driving the crank		1	
49	10122006		送料调节器孔塞		Rubber plug		1	
50	131N01002		螺母		Nut		2	
51	14405001		针线连杆		Needle connecting rod		1	
52	144S20005		针送后驱动自锁轴位螺钉		ter needle to drive the crank shaft screw		1	
53	144S10101		调市螺钉螺钉		Screw		1	
54	144S20006		针送下驱动自锁调整螺钉		Driving crank adjustment screw		1	
55	40128013		垫圈 6.2×13×1		Washer 6.2×13×1		1	
56	10102007		罩帽		Upright shaft		1	
57	10403013		罩帽下轴套		Upright shaft bushing lower		1	
58	11303002		罩帽上轴套		Upright shaft bushing upper		1	
59	113S11036		一字开槽固定螺钉		Screw		1	
60	101S15014		齿轮螺钉 SM1/4"×40 L=7		Screw SM1/4"×40 L=7		8	
61	10425004		上轴全齿轮		Upper shaft bevel gear		1	
62	10425003		垫圈上全齿轮		Upper small bevel gear asm		1	
63	10425002		垫圈下全齿轮		lower large bevel gear asm		1	
64	10425001		下轴全齿轮		Hook drive shaft bevel gear		1	



6. 自动剪线部件/Feed Mechanism Components

序号NO	公司件号	Part NO.	名称	PartName	零件描述	Description	数量	Number
1	114S17001		刀架压板螺钉		Screw		3	
2	14112005		刀架压板	Knife bracket press component			1	
3	14119002		辅助动力	knife			1	
4	14119005		辅助动力 (厚料)	knife (-H)			1	
4	1440700200		剪线辅助架组件	Knife bracket			1	
5	113S151009		活动刀固定螺钉SM11/64"x40 L=4.4	Screw SM11/64"x40 L=4.4			1	
6	131S01002		螺钉SM11/64"x40	Screw SM11/64"x40			1	
7	14119001		活动刀	knife			1	
8	113S17002		活动刀固定螺钉SM11/64"x40 L=4.4	Screw SM11/64"x40 L=4.4			2	
9	14407001		剪线主刀架	Knife bracket			1	
10	114S16004		螺母SM11/64"x40	Nut SM11/64"x40			1	
11	14112001		分线片	Needle guard patch			1	
12	201S11009		螺钉SM9/64"x40 L=5.5	Screw SM9/64"x40 L=5.5			1	
13	113S20001		连杆螺钉SM11/64"x40	hinge screw SM11/64"x40			1	
14	11312005		连杆	Connecting rod			1	
15	141S20002		剪线曲柄轴位螺钉	Screw			1	
16	14104003		剪线辅助轴	Crank			1	
17	S10007		GB/T80 凹轴固定螺钉M4 x4 (发黑)	Screw			1	
18	S05004		螺钉M5x14	Screw M5x14			1	
19	11322001		限位曲柄止动块	Stop block			1	
20	14104001		剪线曲柄	Crank			1	
21	11327001		弹簧	Spring			1	
22	11320004		14孔接线器	Plug			1	
23	11320005		电线插针	Pin			2	
24	14130001		10孔接线器	Plug			1	
25	14103003		剪线轴套	Thread cutting shaft bushing			1	
26	11503005		驱动曲柄轴衬套	Crank drive shaft bushing			1	
27	113S14002		螺钉SM12/64"x40 L=5.5	Screw SM12/64"x40 L=5.5			1	
28	11322002		扭簧端盖	Spring cover			1	
29	11327002		弹簧	Spring			1	
30	14104002		剪线凹曲柄轴	Crank shaft			1	
31	1404000100		剪线驱动组件	Thread trimmer drive asm.			1	
32	101S14001		上轴中套挡圈螺钉SM1/4"x40 L=6	Screw SM1/4"x40 L=6			1	
33	11324001		滚柱	Rolling pin			1	
34	113S16002		螺母SM12/64"x40	Nut SM12/64"x40			1	
35	116S14005		螺钉SM1/4"x40 L=10	Screw SM1/4"x40 L=10			2	
36	11309030		凸轴顶柱	Push rod			2	
37	11310004		剪线凸轮	Cam			1	
37	11310011		剪线凸轮 (厚料)	Cam (-H)			1	
38	14002004		切线驱动轴	Shaft			1	
39	H05013		GB/T896-1986挡圈6	Snap ring 6			1	
40	10112003		针杆曲柄保护板	Cutter wheel protecting			1	
41	11322003		电磁铁缓冲片	Solenoid cushion rubber			1	
42	N01001		螺母M4	Nut M4			2	
43	W01013		GB/T97.1-1985垫圈4.5	Washer			1	
44	11309001		切线电磁铁顶销	Solenoid pin			1	
45	1401200200		切线电磁铁支架垫圈	Bracket			1	
46	S17002		GB/T70 2-2000内六角圆头螺钉M6x10	Screw M6x10			2	
47	14012001		切线杠杆	Tangent lever			1	
48	H03015		GB/T894.1-1 簧8	Ring 8			1	
49	10112003		针杆曲柄保护板	Needle bar crank protecting plate			1	
50	112S16006		螺母SM1/4"x40	Nut SM1/4"x40			1	
51	O01004		O型圈	Rubber ring			1	
52	140 3003400		剪线电磁铁组件	Thread trimmer solenoid asm.			1	
53	10112022		旋线供油管压板	Plate			1	

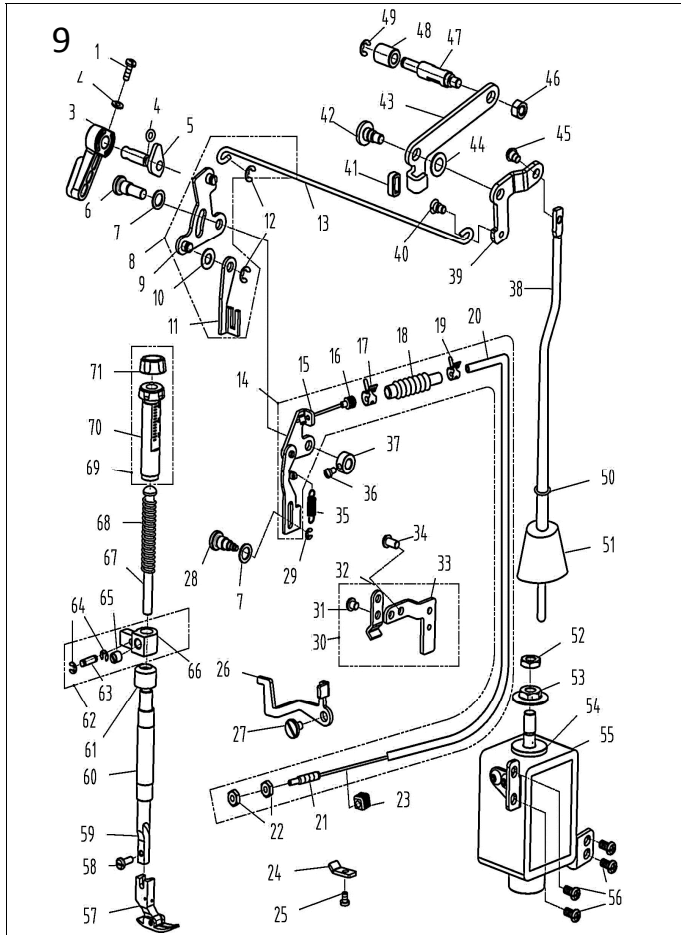


7. 润滑、油量检测部件/Oil Lubrication, Oil Measuring Components

序号NO	公司件号	Part NO.	名称	PartName	零件描述	Description	数量	Number
1	11211004		油窗		Oil sight window		1	
2	10122019		油窗O形圈	Rubber ring			1	
3	14021001		油管Φ4×Φ6	Tubing Φ4xΦ6			0.6	
4	14436001		铝油管Φ4.5xΦ6	Aluminum tubing Φ4.5xΦ6			1	
5	112S30005		油泵连接螺栓	Oil pump connecting stud			1	
6	11329010		开口挡圈10	Snap ring 10			1	
7	10121001		下供油管	Hook driving shaft oil tube			1	
8	10112020		油泵安装板	Oil pump installing base			1	
9	W03002		弹簧	Spring washer			1	
10	209S12001		压脚螺钉SM11/64" x40 L=10.5	Screw SM11/64" x40 L=10.5			1	
11	10103022		油泵体衬套	Oil pump bushing			1	
12	101S30007		柱塞螺钉	Plunger Screw			1	
13	10127013		柱塞套	Plunger spring			1	
14	10122018		回油柱塞	Oil pump			1	
15	10120001		油泵体	Oil pump			1	
16	S04009		油泵螺钉	Screw			3	
17	10111003		油泵叶轮	Oil pump impeller			1	
18	10112021		油泵叶轮盖板	Oil pump impeller cover			1	
19	10111007		油泵盖	Lubricating oil pump cover			1	
20	101S30006		螺钉	Screw			3	
21	1012000100		油泵分部件	Lubricating oil pump component			1	
22	10136001		橡胶接头	Rubber joint			1	
23	14112007		过线钩	Overwire hook			1	
24	W02004		GB/T93-1987弹垫M6	Spring Washer M6			1	
25	116S30003		拾牙叉固定螺钉SM15/64" x28 L=14.5	Screw SM15/64" x28 L=14.5			1	
26	14021003		铝油管	Aluminum tubing			1	
27	11211005		尼龙扎带	Cable band			4	
28	14036004		油嘴喷嘴	Oil nozzle			1	
29	14036002		油嘴	Oil nozzle			3	
30	20429001		油管卡箍6.5	Oil pipe clamp spring			4	
31	14036001		油管Φ4×Φ6	Tubing Φ4xΦ6			0.15	
32	11412055		油管卡箍5.7	Oil pipe clamp spring			2	
33	10423005		油线	Oil wick			1.5	
34	14036003		喷嘴	Oil nozzle			1	
35	14021011		O型圈	Rubber ring			1	
36	140S30001		油量调节螺钉	Oil volume adjusting screw			1	
37	14423001		回油毡	Oil felt felt			1	
38	14427003		回油毡垫	Asphalt felt clamp			1	
39	101S11004		挑线杆护罩螺钉SM3/16" x28 L=7	Screw SM3/16" x28 L=7			1	
40	10112023		回油管夹	Oil tube clamp			1	
41	10121007		回油管组件	Oil return tube component			1	
42	10121008		回油管	Oil return tube			1	
43	10112025		油线固定板	Oil line fixing plate			1	
44	101S11010		压脚板手螺钉SM9/64"x40 L=11	Screw SM9/64"x40 L=11			2	
45	10123010		油线 (厚料)	Oil wick (-H)			1	
46	1443000900		油量检测量组件	Oil measuring device			1	
47	N01009		螺母	Nut			1	
48	W02003		弹性垫圈	Washer			1	
49	14012006		油量检测量固定板	Pull spring fixing plate			1	
50	14011004		油量检测量壳	Shell			1	
51	14002005		导向柱	Guide pillar			1	
52	14011002		浮子	Float			1	
53	H05003		开口挡圈6	Ring 6			1	
54	101S11026		油泵安装螺钉SM15/64"x28 L=9	Screw SM15/64"x28 L=9			2	

8. 自动倒送料、感应拾压脚部件/Automatic Reverse Feed Components

序号NO	公司件号	Part NO.	名称	PartName	零件描述	Description	数量	Number
1	101S11004		挑线杆护罩螺钉SM3/16" x28 L=7	Screw SM3/16" x28 L=7			2	
2	1443000700		LED灯罩	LED Light asm			1	
3	1443000400		双开关组件	Double switch components			1	
4	131S02001		螺钉3/16"x28 L=6.5	Screw 3/16"x28 L=6.5			4	
5	116S30003		拾牙叉固定螺钉SM15/64" x28 L=14.5	Screw SM15/64" x28 L=14.5			1	
6	W02004		GB/T93-1987弹垫M6	Spring washer M6			2	
7	11628005		拾牙叉固定螺钉垫圈	Washer			2	
8	1443001000		自动倒送料电磁铁	Auto reverse feed solenoid			1	
9	11326005		销子	Pin			1	
10	P04001		开口销 GB/T91 2 x14	Cotter pin			1	
11	11322040		橡胶垫片	rubber plunger			1	
12	11328031		垫片	Washer			1	
13	H05014		GB/T896-1986开口挡圈	Snap ring			1	
14	11227006		自动倒送料连杆顶簧	Plunger spring			1	
15	13812034		自动倒送料连杆	Auto reverse feed connecting rod			1	
16	112S16008		自锁螺母SM11/64"x40	Nut SM11/64"x40			2	
17	141S20004		曲柄轴螺钉SM11/64"x40	Hinge Screw SM11/64"x40			1	
18	112S16007		曲柄轴螺母SM1/4"x28	Nut SM1/4"x28			1	
19	14104005		自动倒送料曲柄	Auto reverse feed crank			1	
20	112S20001		曲柄轴螺钉 SM1/4"x28	Hinge Screw SM1/4"x28			1	
21	11212029		自动倒送料拉杆	Auto reverse feed pull shaft			1	
22	14029003		轴用弹性挡圈7(厚0.8mm)	External Circlips 7			1	
23	11211005		尼龙扎带	Cable band			8	
24	1443000800		短头电磁铁组件	Thread trimmer solenoid asm.			1	
25	14112002		短头电磁铁支架	Bracket			1	
26	101S11026		油泵安装螺钉SM15/64"x28 L=9	Screw SM15/64"x28 L=9			2	
27	N01001		螺母M4	Nut M4			2	
28	O01004		O型圈	Rubber ring			1	
29	112S16006		螺母SM1/4"x40	Nut SM1/4"x40			1	
30	W01013		GB/T97.1-1985垫圈4.5	Washer			2	
31	14126001		短头电磁铁顶销	pin			1	
32	14105001		短头电磁铁连杆	rod			1	
33	14127001		限位挡套	Lower sensor			1	
34	141S20001		倒送料连杆轴位螺钉	Screw			1	
35	141S20003		轴位螺钉SM11/64"x40	Screw SM11/64"x40			1	
36	14105002		辅助连杆	rod			1	
37	S05354		GB/T70 1-2000螺钉M2.5 x4	Screw M2.5 x4			1	
38	14013022		过线压板	Wire guide press plate			1	
39	201S11012		螺钉SM9/64"x40	Screw SM9/64"x40			1	
40	1403004100		下感应探头组件	Lower induction probe asm			1	
41	1403004000		下感应探头	Lower induction probe			1	
42	13822030		橡皮圈 (单孔)	Rubber plug			1	



9. 压料、自动拾压脚部件 /Presser Bar , Auto Lifter Components

序号NO	公司件号	Part NO.	名称	PartName	零件描述	Description	数量	Number
1	101S11010		压脚板手螺钉SM9/64"x40 L=11	Screw SM9/64"x40 L=11			1	
2	10128002		压脚板手螺钉垫圈	Washer			1	
3	13811029		压脚板手	Hand lifter			1	
4	O01004		O型圈	Rubber ring			1	
5	1441000200		压脚板手凸轮分部件	Hand lifter cam asm.			1	
6	131S20001		前杆杆螺栓帽	Screw			1	
7	10128016		橡胶垫圈橡胶垫圈(薄)	Washer			2	
8	1441200300		前杆杆组件	Front lever assembly			1	
9	1441200400		拾压脚板手凸轮分部件	Lift front lever component			1	
10	14428002		垫圈 6.5x13x0.8	Washer 6.5x13x0.8			1	
11	14412005		压脚升降板	Lifting plate			1	
12	H05003		GB/T896-1986 挡圈 5	Snap ring 5			2	
13	14412006		拉杆	Pull rod			1	
14	1441200700		松线压板组件	Pine line roof asm.			1	
15	1441201800		松线板组件	Loose line roof asm.			1	
16	14036006		密封接头	Seal joint			1	
17	14029002		卡箍 Φ8	Circlip Φ8			1	
18	14022006		松线管密封套	Loose pipe sealing sleeve			1	
19	14029001		卡箍 Φ6	Circlip Φ6			1	
20	1442201000		拉线套组件	Pull sleeve assembly			1	
21	140330006		拉线头螺钉	Pull joint screw			1	
22	1213512001		螺母 SM3/16"x32	Nut SM3/16"x32			2	
23	14027007		松线管密封套	Sealing plug			1	
24	14012005		松线管下压板	Wire presser			1	
25	1213511004		松线管压板螺钉M4x8	Screw M4x8			1	
26	14412009		松线杆杆	Loose lever			1	
27	131S20003		松线杆杆轴位螺钉D=6.35	Loose lever lever screw D=6.35			1	
28	1442520002		松线压板橡胶垫	Wire release plate pin			1	
29	H05002		GB/T896-1986挡圈3	Snap ring			1	
30	1441201000		松线管管上支架组件	Loose wire catheter support assembly			1	
31	1213511004		松线管管压板螺钉M4x8	Screw M4x8			1	
32	14012010		松线管管上压板	Wire release press plate			1	
33	14412010		松线管管上支架	Wire release bracket upper			1	
34	101S110001		后管板螺钉	Screw			2	
35	14427002		松线压板螺母压簧	Spring			1	
36	114511015		割线刀螺钉 SM9/64"x40	Screw SM9/64"x40			1	
37	13108001		挡圈	Ring			1	
38	14412011		压脚板手	Presser foot lever			1	
39	14412012		脚踏拾压脚板后杆杆	Knee control lever rear lever			1	
40	101S20004		抬牙脚踏杆杆螺钉	Lift rod screw			1	
41	14422006		拾压脚板后杆杆橡胶垫	Rubber pad			1	
42	1442520004		后杆杆轴位螺钉	Hinge screw			1	
43	14412015		自动拾压脚板后杆杆	Knee lifter back lever			1	
44	14428001		平垫圈 8.2x15x1	Flat washer 8.2x15x1			1	
45	144520003		拾压脚板杆轴位螺钉	Axial screw			1	
46	N01012		GB/T6170-1986螺母M6(镀锌)	Nut M6			1	
47	14402006		自动拾压脚板杆杆	Knee lifter connecting rod			1	
48	14411001		塑料滑轮	Whell			1	
49	12139020		挡圈 5	Snap ring 5			1	
50	12928008		平垫圈 5.6x9.7x0.8	VWwasher 5.6x9.7x0.8			1	
51	14022017		拾压脚板杆杆密封垫	Seal cap			1	
52	N01028		GB/T6172.1-2000薄螺母M8(镀锌)	Thin nut M8			1	
53	113516004		法兰螺母M8	Flange nuts M8			1	
54	11322008		电镀锌上垫片	washer			1	
55	1443000200		拾压脚板电磁阀组件	Solenoid asm.			1	
56	101S11001		后管板螺钉	Screw			4	
57	1311600100		活压脚组件	Presser foot asm.			1	
58	1311600100		活压脚组件 (原料)	Presser foot asm. (-H)			1	
59	101S11009		活压脚螺钉 SM9/64"x40 L=10.5	Screw SM9/64"x40 L=10.5			1	
60	11402009		压杆	Presser bar			1	
61	101030102		压杆衬套	Presser bar bushing lower			1	
62	104020102		压杆衬套盖	Pressure bar cl cover			1	
63	1440900100		压杆衬套螺母	Strut guide pin			1	
64	14426002		压杆导向指南	Push rod guide pin			1	
64	H05002		GB/T896-1986挡圈3	Snap ring			2	
65	101S115007		压杆导向架螺钉 SM1/4"x40 L=8	Screw SM1/4"x40 L=8			1	
66	14409002		压杆导向架	Presser bar guide bracket			1	
67	10103009		压杆导向杆	Press regulating guide bar			1	
68	10127023		调压弹簧	Press regulating spring			1	
68	11427033		调压弹簧 (原料)	Press regulating spring (-H)			1	
69	1381102700		调压弹簧组件	Press regulating screw asm.			1	
70	13811027		调压螺钉	Press regulating screw			1	
71	13811028		调压螺母	Press regulating nut			1	