

在使用缝纫机之前请阅读本使用说明书。
请将本使用说明书放在便于查阅的地方保管。



直驱高速平缝机 A9200L-D4-W-CP系列
DIRECT-DRIVE HIGH SPEED LOCKSTITCH SEWING MACHINE

零件手册

PARTS BOOK

浙江中捷缝纫科技有限公司
ZOJE SEWING MACHINE CO., LTD.

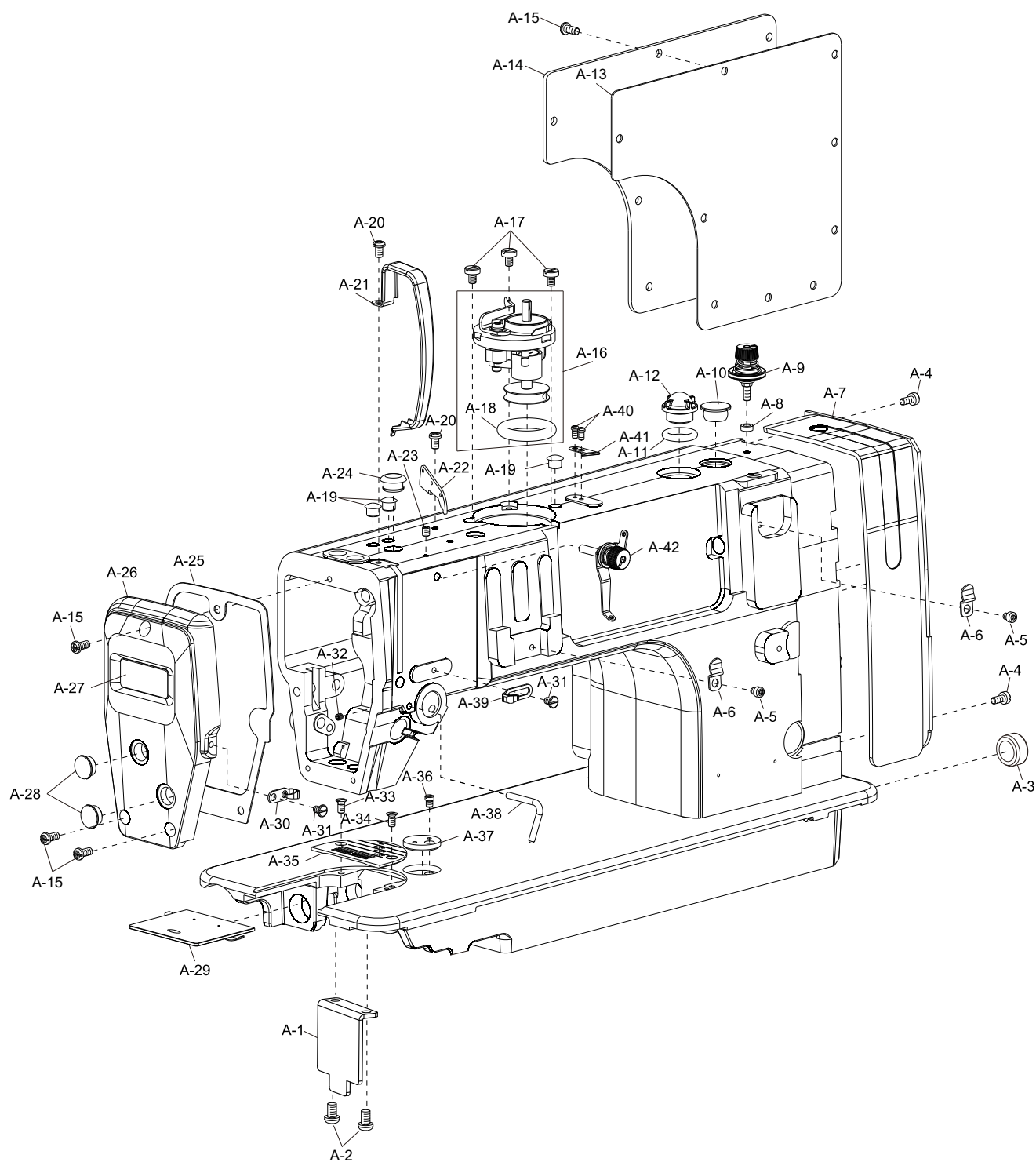
目 录

CONTENTS

零件样本

Parts Book

A	机壳分组件 Machine Frame & Miscellaneous Cover Components	1
B	上轴、挑线分组件 Main Shaft & Thread Take-up Cover Components	3
C	抬压脚分组件 Hang Lifter & Tension Release Components	5
D	勾线分组件 Hook Of Driving Shaft Components	9
E	送料分组件 Feed Mechanism Components	11
F	剪线分组件 Thread trimmer Components	15
G	润滑分组件 Lubrication Components	17
H	电控分组件 Drive-by-wire Components	19
I	过线架分组件 Components Of Thread-running Stand	21
J	附件 Auxiliaries	23





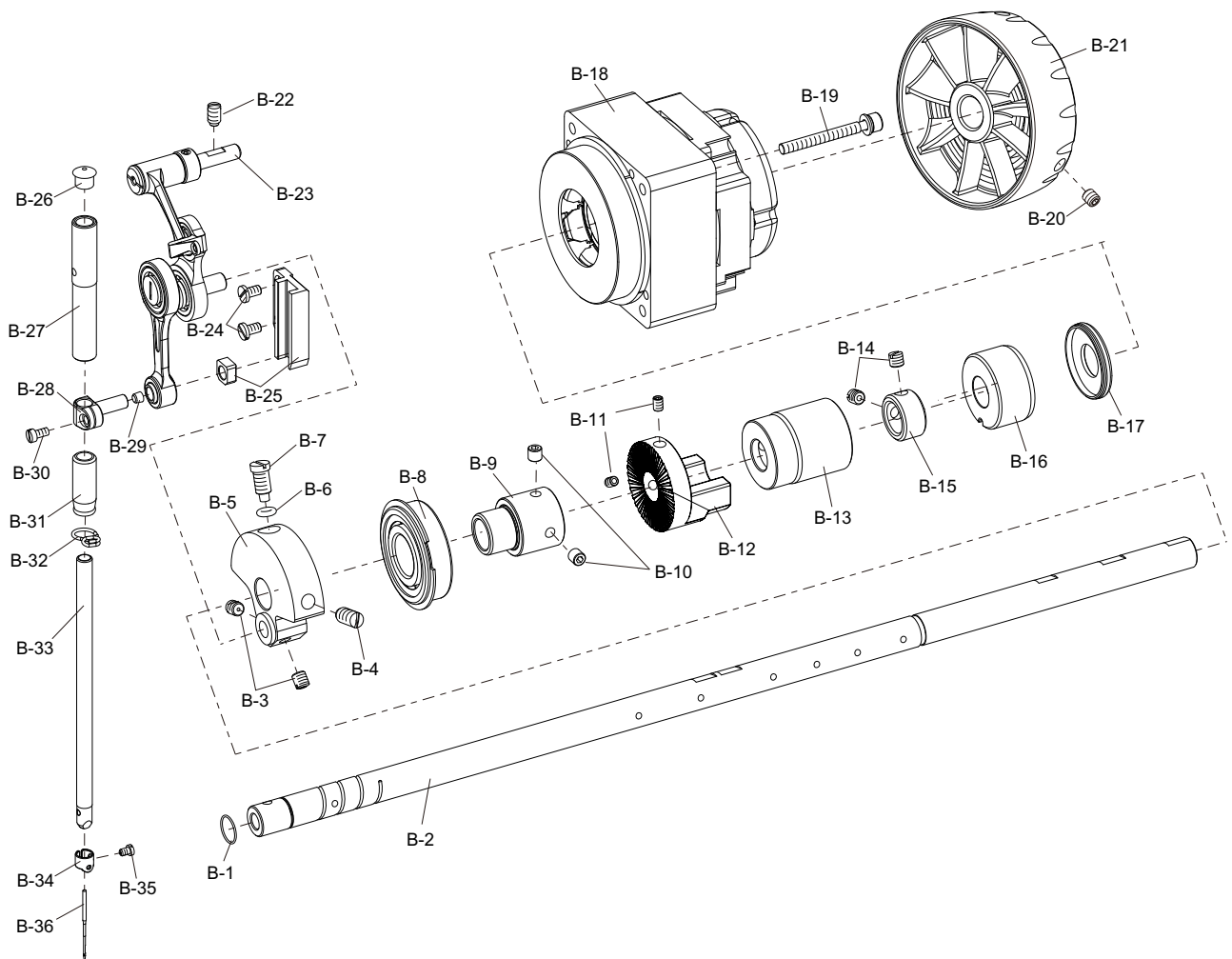
机壳分组件

Machine Frame & Miscellaneous Cover Components

序 号 Ref. No.	件 号 Part No.	名 称	Name of part	数 量 QTY	备 注 Remark
A-1	10065750	前支撑板	Bed screw stud	1	
A-2	10012142	SM15/64" ×28螺钉	Screw SM15/64" ×28	2	
A-3	10040969	橡胶塞	Rubber plug	1	
A-4	10010066	SM11/64"×40螺钉	Screw SM11/64"×40	2	
A-5	10003382	SM11/64"×40螺钉	Screw SM11/64"×40	2	
A-6	10062047	滑扣簧	Slide buckle	2	
A-7	10067450	塑料标识板	Plastic plate	1	
A-8	10062565	绕线夹线器垫圈	Washer	1	
A-9	10062049	绕线夹线器组件	Bobbin thread tension ASM	1	
A-10	10009576	橡胶塞	Rubber plug	1	
A-11	10008938	油窗	Oil window	1	
A-12	10008939	19×3 O形圈	O-ring 19×3	1	
A-13	10066540	后窗板垫	Side plate gasket	1	
A-14	20025957	后窗板	Side plate	1	
A-15	10008972	SM3/16" ×28螺钉	Screw SM3/16" ×28	12	
A-16	10031086	绕线器	Bobbin wider ASM.	1	
A-17	10004380	SM3/16" ×32螺钉	Screw SM3/16" ×32	3	
A-18	10008773	橡胶轮	Rubber ring	1	
A-19	10008943	橡胶塞	Rubber ring	3	
A-20	10008934	SM3/16" ×28螺钉	Screw SM3/16" ×28	2	
A-21	20027103	挑线杆护罩	Thread take-up lever cover	1	
A-22	10052992	过线板	Thread tension guide	1	
A-23	10041529	SM3/16" ×28螺钉	Screw SM3/16" ×28	1	
A-24	10008942	橡胶塞	Rubber ring	1	
A-25	10062031	面板垫	Face plate gasket	1	
A-26	20024053	面板	Face plate	1	
A-27	*	面板装饰牌	Decorative board	1	
A-28	10008977	橡胶塞	Rubber ring	2	
A-29	10013706	推板部件	Push plate ASM.	1	
A-30	10008937	左线钩	Arm thread guide left	1	
A-31	10008973	SM11/64"×40螺钉	Screw SM11/64"×40	2	
A-32	10009074	M4螺钉	Screw M4	1	
A-33	10012463	SM11/64" ×40螺钉	Screw SM11/64" ×40	1	
A-34	10009005	SM11/64" ×40螺钉	Screw SM11/64" ×40	1	
A-35	10060708	针板组件	Needle plate	1	
	10014459	针板组件	Needle plate	1	-5
	10052350	针板组件	Needle plate	1	S7/H
A-36	10004374	SM11/64" ×40螺钉	Screw SM11/64" ×40	1	
A-37	10068607	限位挡片	Ruler plate	1	
A-38	10038945	缓线钩	Presser bar thread guide	1	
A-39	10008940	右线钩	Arm thread guide right	1	
A-40	10050423	SM9/64"×40螺钉	Screw SM9/64"×40	2	
A-41	10011149	绕线切刀	Thread cutter	1	
A-42	10070942	上夹线器部件	Top thread tension ASM	1	

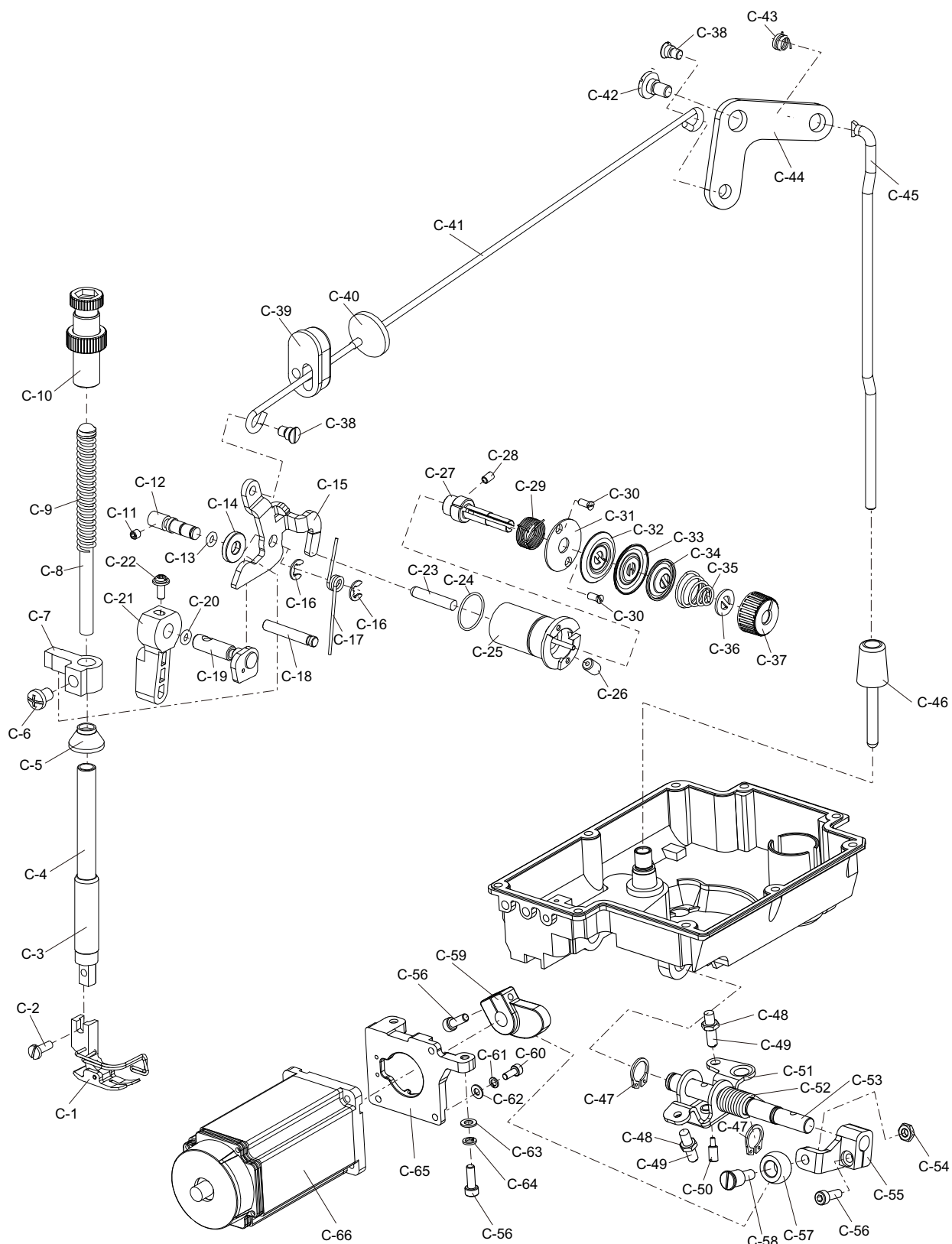
“*” 具体料号需向客服咨询

“*” Specific content need to consult customer service





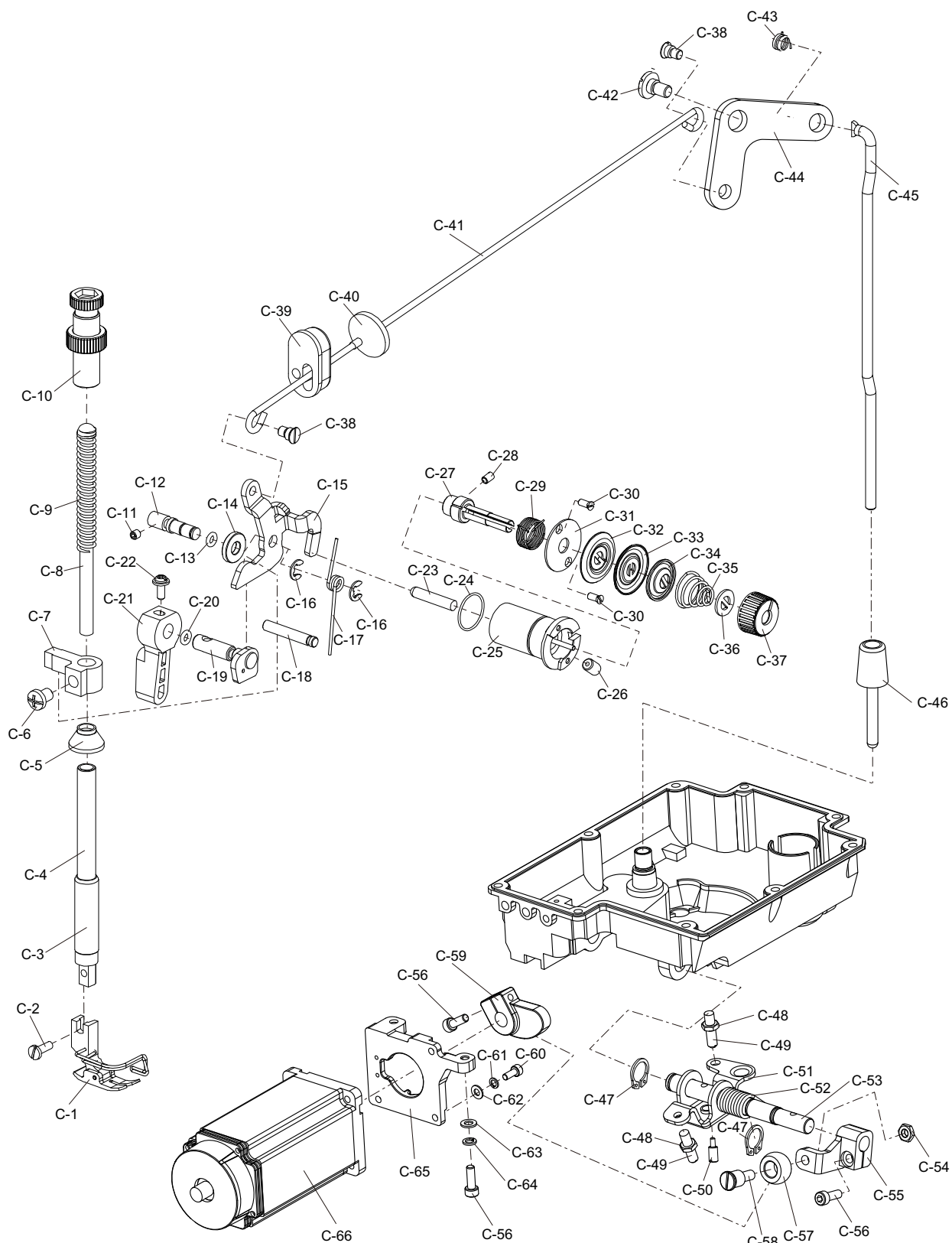
“*” 具体料号需向客服咨询
“*” Specific content need to consult customer service





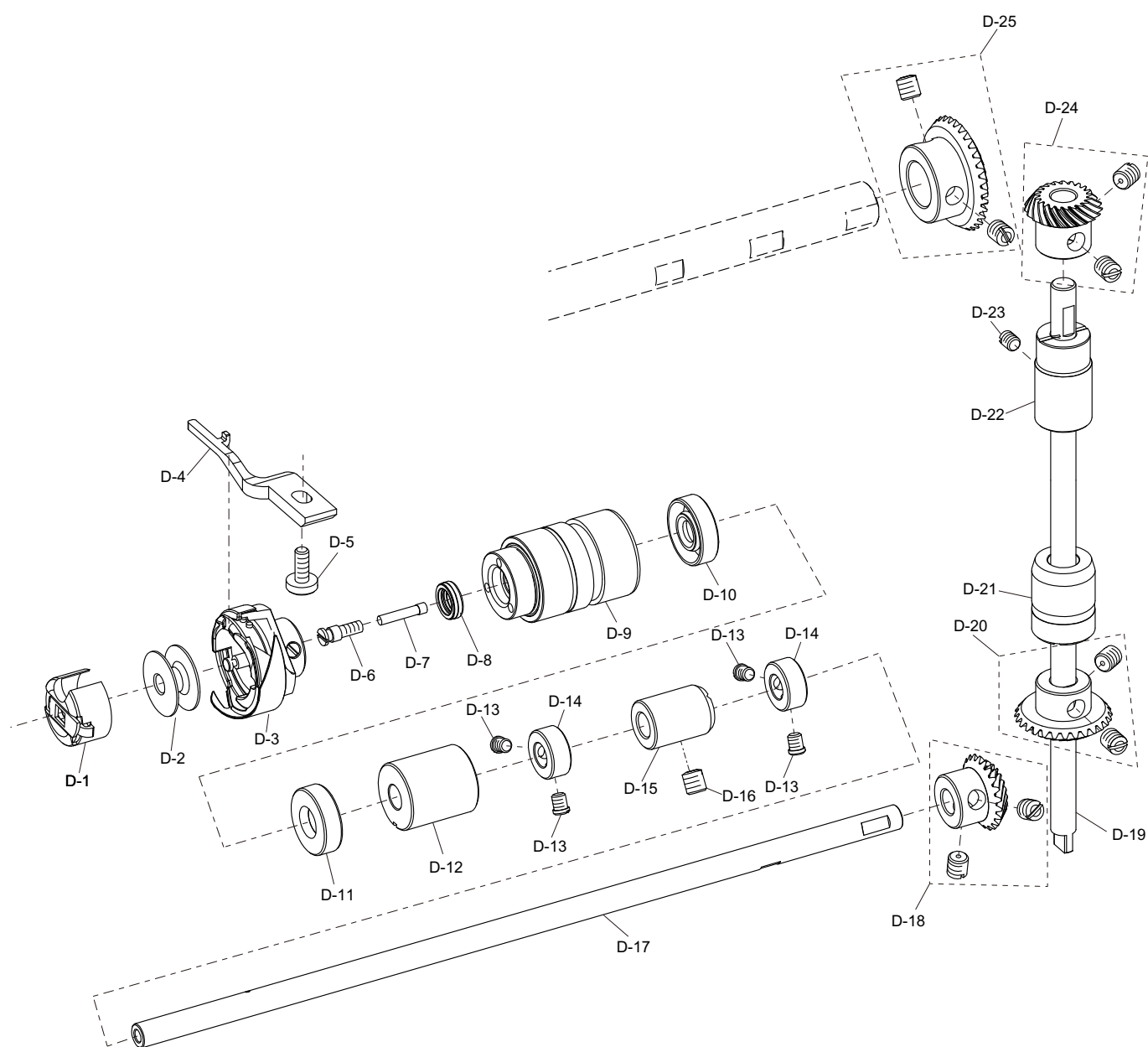
抬压脚分组件 Hang Lifter & Tension Release Components

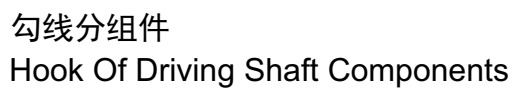
序 号 Ref. No.	件 号 Part No.	名 称	Name of part	数 量 QTY	备 注 Remark
C-1	10052532	压脚组件	Presser foot ASM.	1	
C-2	10010650	SM9/64" ×40螺钉	Screw SM9/64" ×40	1	
C-3	10010646	压杆	Presser bar	1	
C-4	10005915	压杆轴套	Shaft sleeve	1	
C-5	10011457	压杆防油罩	Oil protector cover	1	
C-6	10000325	M6×8螺钉	Screw M6×8	1	
C-7	10039365	压杆导架	Presser guide bar bracket	1	
C-8	10004439	调压导杆	Presser guide bar	1	
C-9	10004473	调压弹簧	Spring	1	
C-10	10062052	调压螺钉组件	Screw ASM.	1	
C-11	10009074	M4×4螺钉	Screw M4×4	1	
C-12	10039373	松线顶板销	Pin	1	
C-13	10010027	3.68×1.78 O形圈	O-ring 3.68×1.78	1	
C-14	10051244	6.2×15×2.7垫片	Gasket 6.2×15×2.7	1	
C-15	10058058	压脚升降板	Lifting lever	1	
C-16	10013038	5×0.8挡圈	Closing ring 5×0.8	2	
C-17	10052046	压脚升降板复位簧	Spring	1	
C-18	10039374	限位销	Pin	1	
C-19	10050190	压脚扳手凸轮部件	Hand lifter CAM ASM.	1	
C-20	10010027	3.68×1.78 O形圈	O-ring 3.68×1.78	1	
C-21	10062023	压脚扳手	Hand lifter	1	
C-22	10010016	SM9/64"×40螺钉	Screw SM11/64"×40	1	
C-23	10058060	松线辅钉	Tension release supporting pin	1	
C-24	10053484	17×1 O形圈	O-ring 17×1	1	
C-25	10064221	松线电磁铁	Electronmagnetic	1	
C-26	10010678	SM15/64"×28螺钉	Screw SM15/64"×28	1	
C-27	10037581	夹线螺钉	Screw	1	
C-28	10002896	M4×5螺钉	Screw M4×5	1	
C-29	10053259	挑线弹簧	Spring	1	
C-30	10010399	SM3/32"×56螺钉	Screw SM3/32"×56	2	
C-31	10051910	锁紧板	Lock plate	1	
C-32	10005489	过线板	Thread tension disk	1	
C-33	10005489	过线板	Thread tension disk	1	
C-34	10004625	松线板	Thread tension disk presser	1	
C-35	10004176	弹簧	Spring	1	
C-36	10004199	夹线制动板	Rotating stopper	1	
C-37	10062024	松线器螺母	Thread tension nut	1	
C-38	10010651	SM3/16"×32螺钉	Screw SM3/16"×32	2	
C-39	10059957	橡胶塞	Rubber plug	1	
C-40	10053351	隔油罩	Oil shield	1	
C-41	10068925	抬压脚拉杆	Lifting lever connecting rod	1	
C-42	10010652	后杠杆轴位螺钉	Screw	1	
C-43	10009205	弹簧	Spring	1	
C-44	10010017	抬压脚后杠杆	Lifting lever link	1	
C-45	10067486	抬压脚顶杆	Connecting rod vertical	1	
C-46	10068362	膝提顶杆	Knee lift rod	1	
C-47	10063385	轴用弹性挡圈	Retaining ring	2	



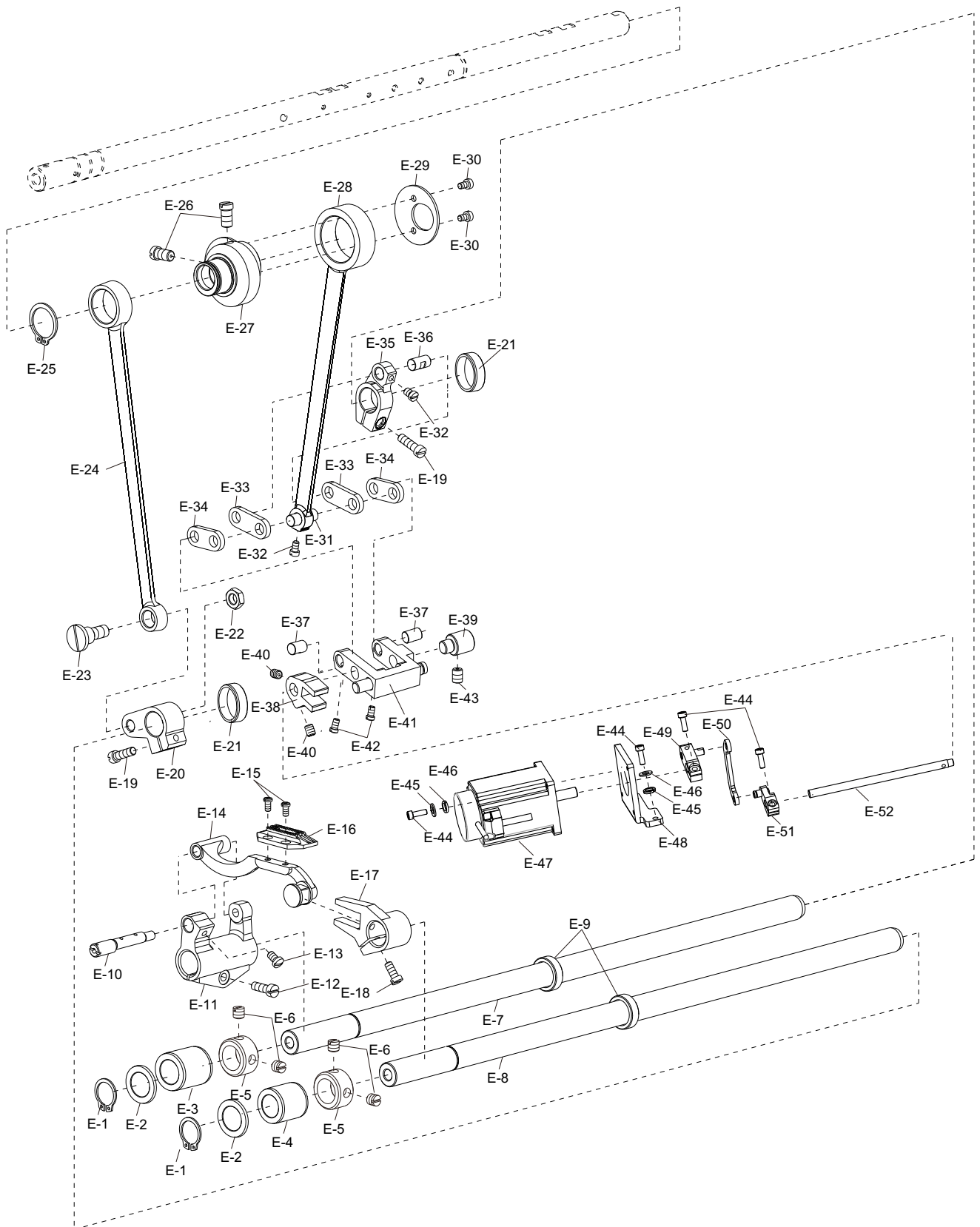


-8-





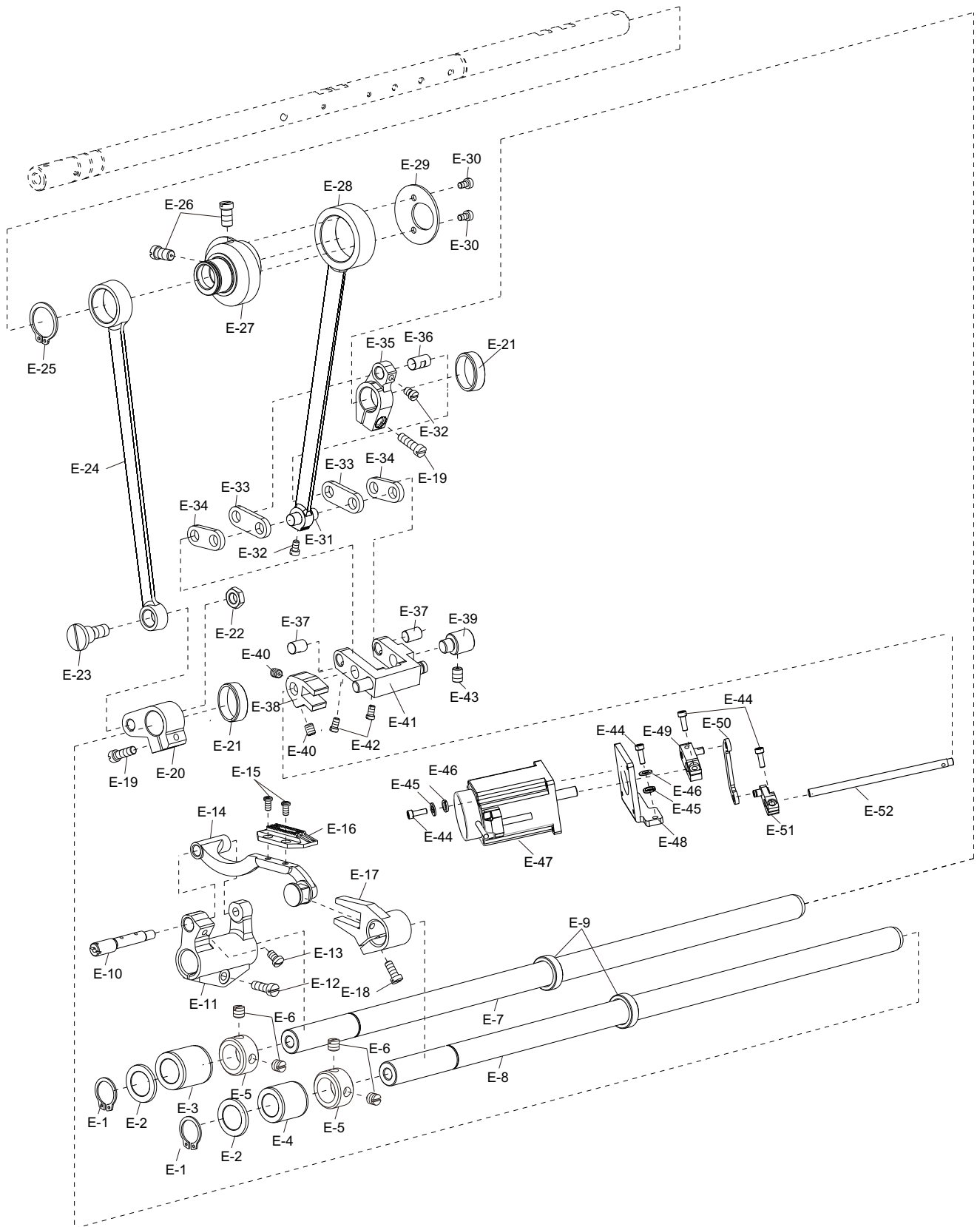
-10-



序 号 Ref. No.	件 号 Part No.	名 称	Name of part	数 量 QTY	备 注 Remark
E-1	10010090	13.8×1挡圈	Closing ring 13.8×1	2	
E-2	10058066	垫圈	Washer	2	
E-3	10058169	送料轴前套	Shaft sleeve	1	
E-4	10067616	抬牙轴前套	Shaft sleeve	1	
E-5	10010542	挡圈	Thrust collar	2	
E-6	10038073	SM1/4"×40螺钉	Screw SM1/4"×40	4	
E-7	10064226	送料轴	Feed driving shaft	1	
E-8	10064225	抬牙轴	Feed driving shaft	1	
E-9	10012536	14.72×22×7油封	Oil seal 14.72×22×7	2	
E-10	10061663	销	Pin	1	
E-11	10061662	牙架座	Feed bar driving crank	1	
E-12	10004993	SM3/16"×28螺钉	Screw SM3/16"×28	1	
E-13	10010074	SM11/64"×40螺钉	Screw SM11/64"×40	1	
E-14	10069423	牙架部件	Feed bar ASM.	1	
E-15	10010099	SM1/8"×44螺钉	Screw SM1/8"×44	2	
E-16	10056721	送料牙	Feed dog	1	
	10026357	送料牙	Feed dog	1	S7
	10007322	送料牙	Feed dog	1	-5
	10038413	送料牙	Feed dog	1	H
E-17	10010100	抬牙叉形曲柄	Crank	1	
E-18	10004628	SM11/64"×40螺钉	Screw SM11/64"×40	1	
E-19	10010095	SM3/16"×28螺钉	Screw SM3/16"×28	2	
E-20	10010086	抬牙后曲柄	Crank	1	
E-21	10054363	橡胶塞	Rubber plug	2	
E-22	10004475	SM9/32"×28螺母	Nut SM9/32"×28	1	
E-23	10051856	抬牙连杆轴位螺钉	Screw	1	
E-24	10010084	抬牙连杆	Connecting rod	1	
E-25	10010089	18.5×1.2挡圈	Closing ring 18.5×1.2	1	
E-26	10010092	SM1/4"×40螺钉	Screw SM1/4"×40	2	
E-27	10010115	送料偏心轮	Feed drive eccentric cam	1	
	10005991	送料偏心轮	Feed drive eccentric cam	1	S7/H
E-28	10010072	送料连杆	Connecting rod	1	
	10006004	送料连杆	Connecting rod	1	S7/H
E-29	10010098	送料偏心轮盖板	Thrust cover	1	
	10005992	送料偏心轮盖板	Thrust cover	1	S7/H
E-30	10010643	SM9/64"×40螺钉	Screw SM9/64"×40	2	
E-31	10010069	销	Pin	1	
E-32	10010071	SM9/64"×40螺钉	Screw SM9/64"×40	2	
E-33	10010068	送料长摆动板	Connecting plate	2	
E-34	10010075	送料短摆动板	Connecting plate	2	
E-35	10010076	送料曲柄	Crank	1	
E-36	10010096	送料曲柄销	Pin	1	
E-37	10010087	短摆动板连接销	Pin	2	
E-38	10058082	倒缝驱动曲柄	Crank	1	
E-39	10058084	送料摆动板座左右销	Pin	1	
E-40	10011232	螺钉-SM3/16"×28	Screw SM3/16"×28	2	
E-41	10058081	送料摆动板座部件	Feed adjusting ASM.	1	

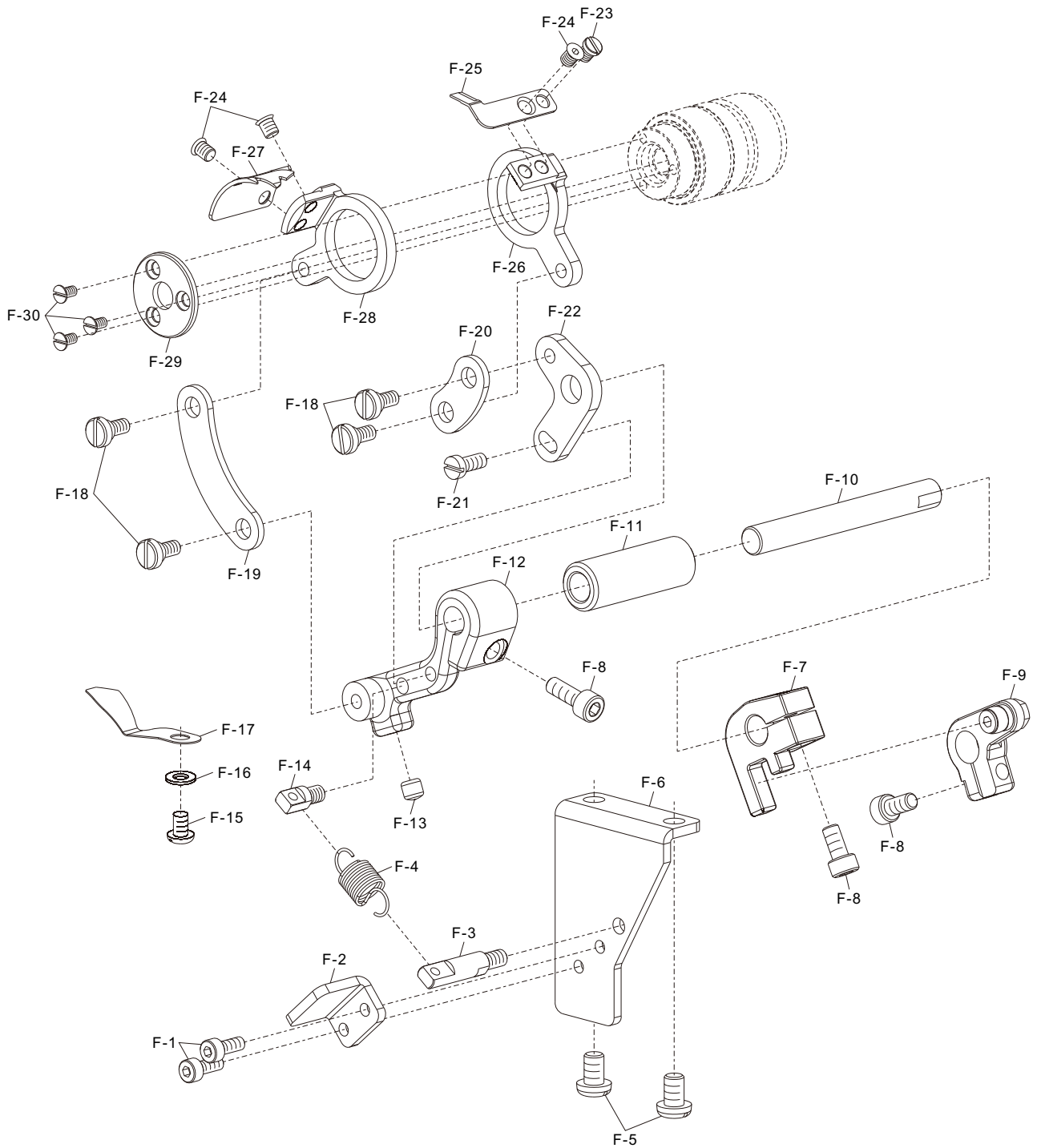
“*” 具体内容需向客服咨询

“*” Specific content need to consult customer service





“*” 具体内容需向客服咨询
“*” Specific content need to consult customer service

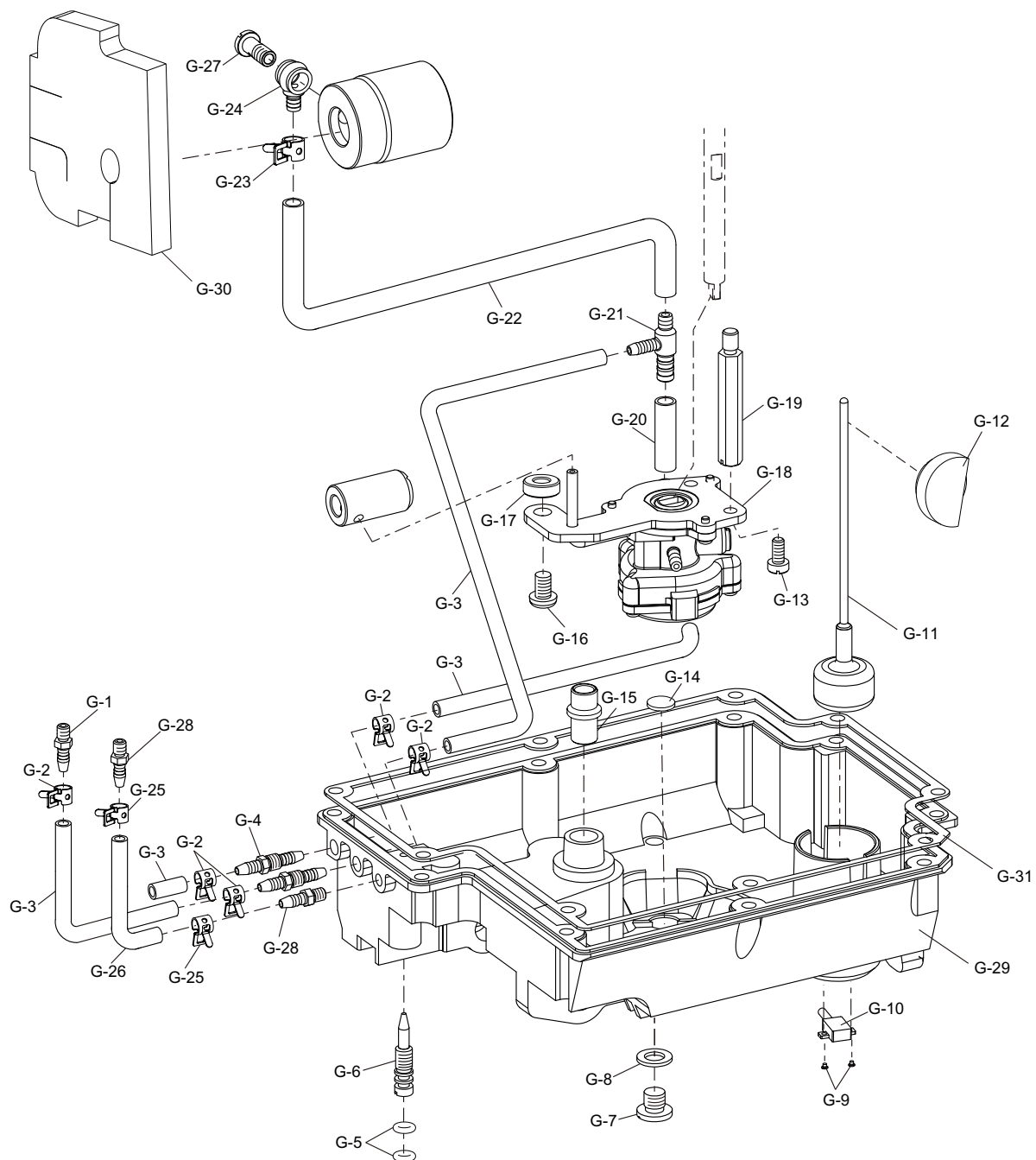


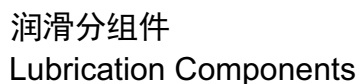


剪线分组件

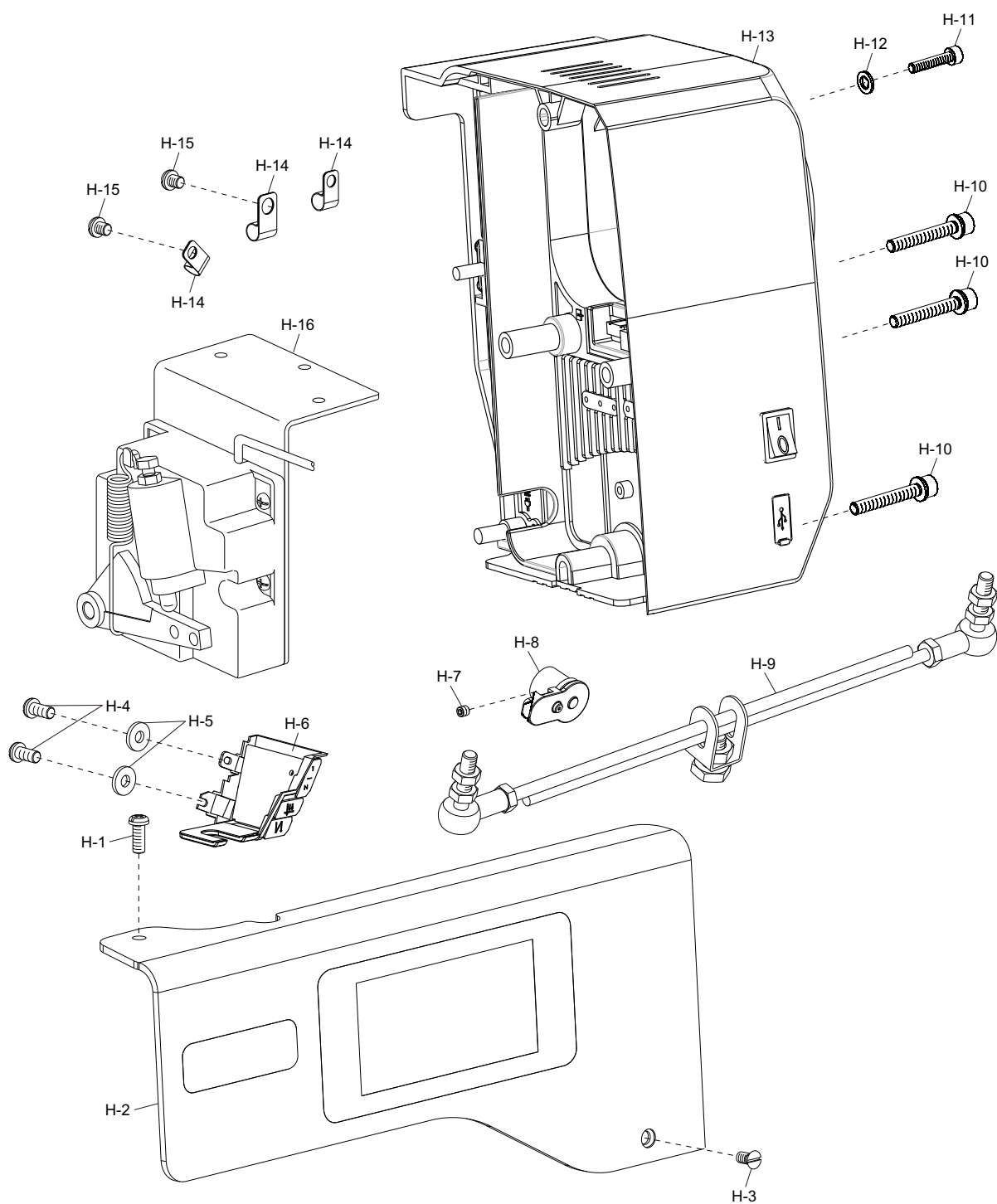
Thread trimmer Components

[illegible]





-18-





电控分组件 Drive-by-wire Components

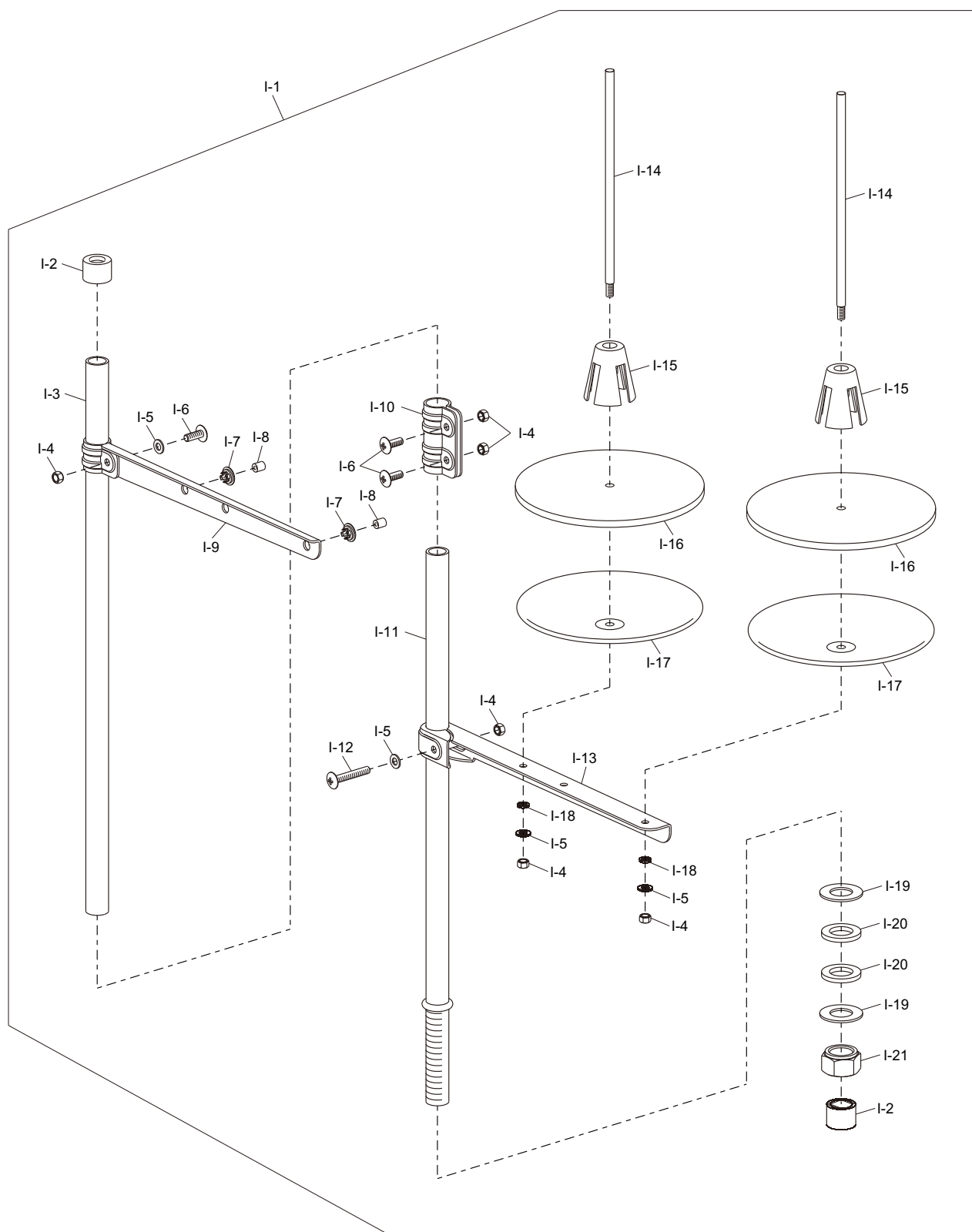
[illegible]

“*” 具体内容需向客服咨询

“*” Specific content need to consult customer service

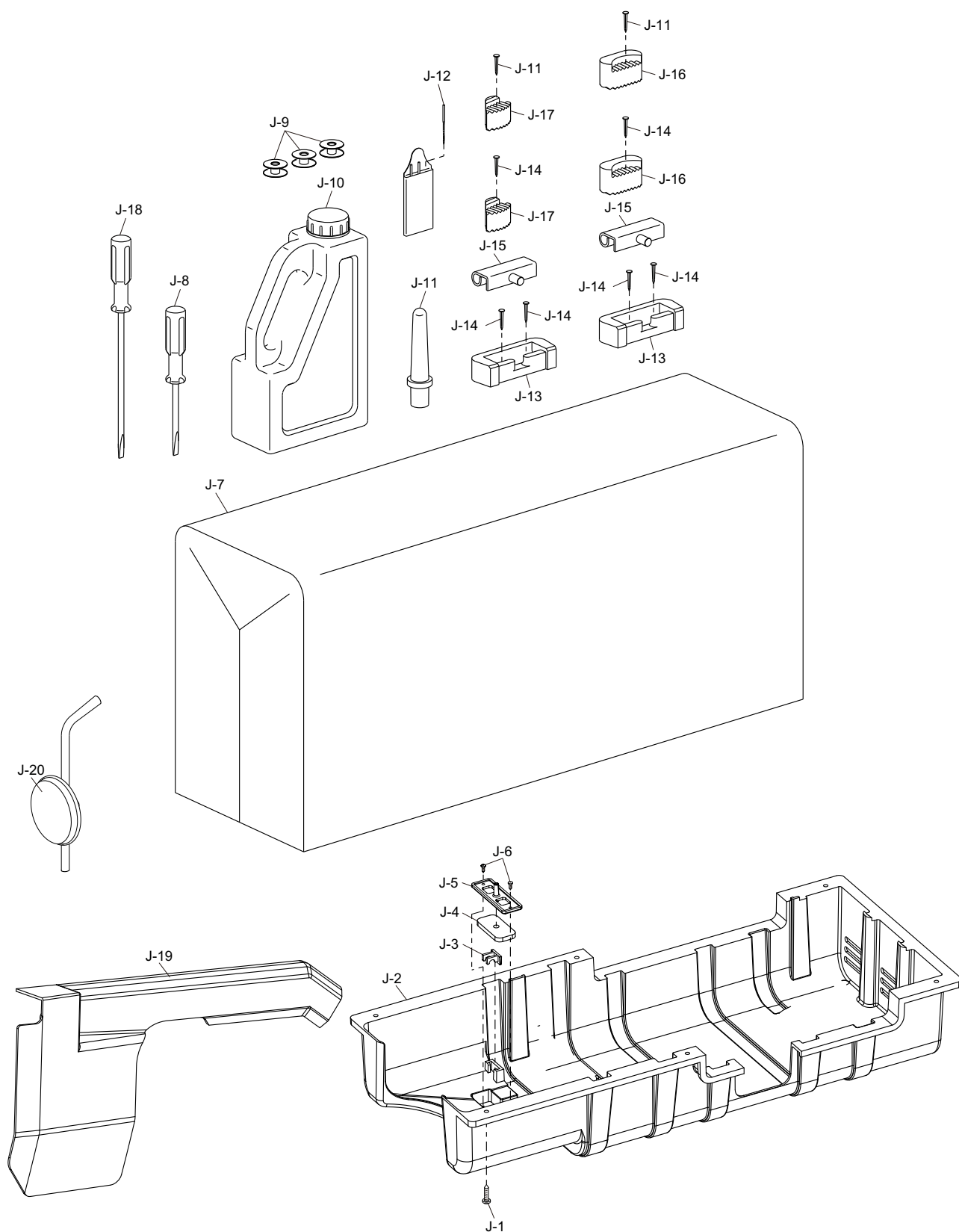
I

过线架分组件 Components Of Thread-running Stand



Components Of Thread-running Stand

[illegible]



*请注意:由于产品改进,本手册内容可能会与实际购买的产品略有出入。



浙江中捷缝纫科技有限公司
ZOJE SEWING MACHINE CO., LTD.

地址: 浙江省玉环市大麦屿街道兴港东路198号
ADD: Damaiyu Hing Kong Road no.198, Yuhuan, Zhejiang 317604 China
国内营销中心: Domestic Business Center
Tel: 0576-87338345 87338215 Fax: 0576-87338222
国际营销中心: International Business Center
Tel: +86-576-87333222 87338299 Fax: +86-576-87332702
www.zoje.com E-mail: sales@zoje.com