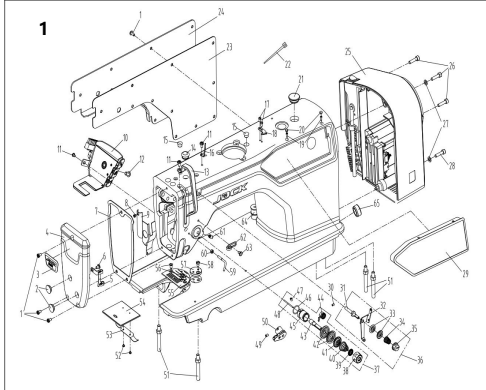


A4F 系列

A4F Series

零件手册

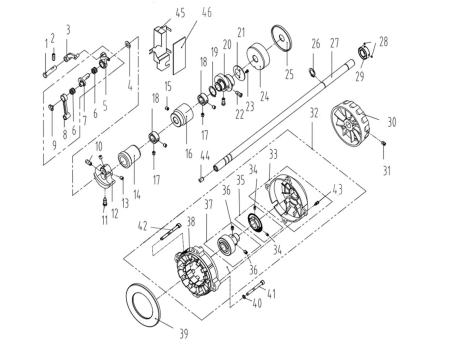
Parts Manual



1. 机壳、外装部件/Machine Frame & Miscellaneous Cover Components

序号 NO	公司件号 Part NO	名称 PartName	零件描述 Description	数量 Number
1	101511001	螺钉SM3/16"×28 L=9	Screw SM3/16"×28 L=9	14
2	10122003	橡胶密封孔塞	Rubber plug	2
3	115037001	面盖板	Head cover	1
4	115001003	面盖板	Face plate asm	1
5	13813005	左轴套	Thread guide left	1
6	101511007	螺钉SM11/64"×40 L=6	Screw SM11/64"×40 L=6	1
7	115022002	面盖板	Face plate gasket	1
8	101511027	螺钉SM1/8"×44 L=3.4	Screw SM1/8"×44 L=3.4	1
9	113812019	面盖板	Face of shield asm	1
9	11412002	面盖板	Face of shield asm (H)	1
10	11503002900	按钮开关组件(三开关)	Three switch components	1
11	101511003	螺钉SM3/16"×28 L=7	Screw SM3/16"×28 L=7	3
12	101511026	螺钉SM1/64"×28 L=9	Screw SM1/64"×28 L=9	1
13	13812018	轴套防护罩	Thread take-up lever cover	1
14	10122004	针杆轴套	Rubber plug	1
15	10122005	轴套轴套	Rubber plug	1
16	115122004	针杆轴套	Needle bar thread guide	1
17	114511015	螺钉SM9/64"×40 L=6	Screw SM9/64"×40 L=6	2
18	11413001	刀片	Knife	1
19	138505001	螺钉M3 L=12	Screw M3 L=12	2
20	13822001	橡胶垫圈	Rubber plug	1
21	20722002	油圈	Oil seal	1
22	13811004	尼龙扎带	Cable band	3
23	115022001	面盖板	Face plate gasket	1
24	115141206	面盖板	Face plate	1
25	101503007300	一体机电控组件(25A)	Electronic control asm (25A)	1
26	1151430060	一体机电控组件(25B)	Electronic control asm (25B)	1
26	114511021	螺钉M1.6×MS L=30	Screw M1.6×MS L=30	3
27	W01009	垫圈	Washer	2
28	114530001	螺钉M1.6×MS L=25	Screw MSx25	3
29	11503007400	一体机电控组件(25A)	Control panel (25A)	1
30	1143005000	一体机电控组件(25B)	Control panel (25B)	1
30	138508006	螺钉SM3/16"×28 L=7	Screw SM3/16"×28 L=7	1
31	13810008	小夹板螺母	Thread tension post	1
32	13812066	针板	Thread tension guide plate	1
33	14112017	小夹板	Thread tension disk	2
34	11222001	小夹板螺母	Thread tension spring	1
35	14515019	小夹板螺母	Thread tension nut	1
36	141130400	小夹板螺母	Thread tension arm	1
37	141130030	夹板螺母	Thread tension arm	1
37	141130050	夹板螺母 (厚料)	Thread tension arm (H)	1
38	14515019	夹板螺母	Thread tension nut	1
39	10112007	夹板螺母	Thread disk rotating stopper	1
40	10127002	夹板螺母	Thread tension spring A	1
41	11427050	夹板螺母	Thread tension spring A (H)	1
42	14112016	夹板螺母	Thread tension disk	2
43	14112015	夹板螺母	Thread tension disk	2
44	145130001	夹板螺母	Thread tension post	1
45	10127001	夹板螺母	Thread take-up spring	1
46	10127011	夹板螺母	Thread take-up spring (H)	1
47	10130111	夹板螺母	Thread tension base	1
48	10122014	夹板螺母	Rubber ring	1
49	10151005	螺钉SM9/64"×40 L=5.5	Screw SM9/64"×40 L=5.5	1
50	11326012	夹板螺母	Tension release pin	1
51	10126002	夹板螺母	Tension release pin (H)	1
49	207514007	螺钉M1.6 L=6	Screw M1.6 L=6	1
50	1023000200	针杆轴套	Needle bar L=6	1
51	101512001	面盖板	Machine head stop	2
52	101511019	螺钉SM3/16"×28 L=2	Screw SM3/16"×28 L=2	4
53	10127009	面盖板	Slide plate spring	1
54	10115002	面盖板	Thread guide	1
13815011	针板	Needle plate		1
55	11315001	针板	Needle plate (H)	1
56	104517002	螺钉SM11/64"×40 L=6.5	Screw SM11/64"×40 L=6.5	1
57	13812019	面盖板	Ruler stop step	1
58	101511002	螺钉SM11/64"×40 L=5.5	Screw SM11/64"×40 L=5.5	1
59	11413011	面盖板	Thread guide	1
60	401516001	螺钉SM9/64"×40	Nut SM9/64"×40	1
61	101515010	螺钉SM15/64"×28 L=10.5	Screw SM15/64"×28 L=10.5	1
62	10113004	面盖板	Thread guide	1
63	101511017	螺钉SM11/64"×40 L=6	Screw SM11/64"×40 L=6	1
64	10122001	橡胶圈(厚料)	Rubber plug	1
65	10122007	孔塞	Rubber plug	1

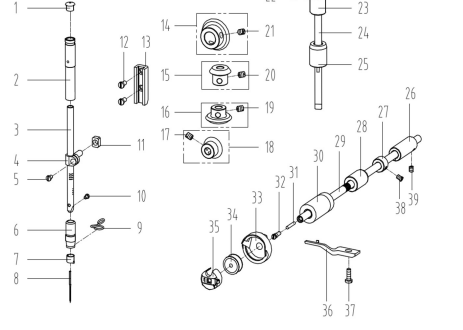
2



2. 上轴、挑线部件/Main Shaft & Thread Take-up Components

序号 NO	公司件号 Part NO	名称 PartName	零件描述 Description	数量 Number
1	11326013	挑线杆	Thread take-up connecting rod pin	1
1	1012001	挑线杆 (H-M)	Thread take-up connecting rod pin (H-M)	1
2	10151001	螺钉SM15/64"×28 L=1.5	Screw SM15/64"×28 L=1.5	1
3	11305010	挑线杆	Thread take-up connecting rod	1
4	10105001	挑线杆	Thread take-up connecting rod (H)	1
5	10122003	针杆轴套	Needle bar crank protecting plate	1
6	1013800100	挑线杆分母	Thread take-up lever asm	1
7	113800200	挑线杆分母 (厚料)	Thread take-up lever asm (H)	1
8	10124001	挑线杆分母	Needle bearing	2
9	11310012	挑线杆分母	Thread take-up crank (H)	1
7	10100400	挑线杆分母 (厚料)	Thread take-up crank (H-M)	1
11	11310010	挑线杆分母 (H-M)	Thread take-up crank (H-M)	1
8	10105002	针杆轴套	Needle bar connecting rod	1
9	101517001	螺钉SM9/64"×40 (左旋)	Screw SM9/64"×40 (left hand) L=4.8	1
10	101515004	螺钉SM9/32"×28 L=16	Screw SM9/32"×28 L=16	1
11	101511003	螺钉SM9/32"×28 L=16	Screw SM9/32"×28 L=16	1
12	11404035	针杆轴套	Needle bar crank (H)	1
13	11310010	针杆轴套	Needle bar crank (H-M)	1
13	101510002	螺钉SM1/4"×40 L=6	Screw SM1/4"×40 L=6	2
14	114000200	上轴螺母	Main shaft bushing front	1
15	101515006	螺钉SM15/64"×28 L=7	Screw SM15/64"×28 L=7	1
16	12203002	主轴轴套	Main shaft bushing mid	1
17	101540001	螺钉SM1/4"×40 L=6	Screw SM1/4"×40 L=6	2
18	10100011	上轴螺母	Main shaft thrust collar	1
19	403002	吊圈	Snag ring 20	1
13	11310014	送料轴心板	Feed eccentric cam	1
20	400011	送料轴心板 (H-M)	Feed eccentric cam (H-M)	1
20	400006	送料轴心板 (H-M)	Feed eccentric cam (H-M)	1
21	10112017	送料轴心板	Feed plate	1
21	10112017	送料轴心板 (厚料)	Feed plate (H)	1
22	101511013	螺钉SM1/4"×40 L=13	Screw SM1/4"×40 L=13	2
23	207511018	螺钉M5 L=10	Screw M5 L=10	2
23	113511003	螺钉SM9/64"×40 L=5	Screw SM9/64"×40 L=5	2
24	13802002	上轴螺母	The rear axle sleeve	1
25	10121015	上轴螺母	Di seal	1
26	403001	G6/8×19/8-19/8的圈15	Snag ring 15	1
27	10202002	上轴	Main shaft	1
28	510103	G6/8×19/8-19/8的圈16 L=6	Screw M6 L=6	2
29	10200001	电机防尘罩	Motor dust jacket	1
30	302830	手轮螺母	Handwheel	1
31	510109	螺钉M6 L=8	Screw M6 L=8	2
32	115013002	电机	Motor	1
33	5111049	电机轴套	Motor cover arm	1
34	509022	螺钉M3 L=4	Screw M3 L=4	2
35	95100116	电机轴套	Motor grinding sensor arm	1
36	509113	螺钉M1.6 L=6	Screw M1.6 L=6	1
37	95100004	电机轴套	Motor rotor	1
38	95100005	电机轴套	Motor rotor	1
39	951210016	电机轴套	Motor insulation shield	1
40	W00258	G6/8×19/8-19/8的圈15	Spring washer 5	3
41	1012101100	螺钉M6 L=20	Screw M6 L=20	3
42	145150101	螺钉M6 L=20	Screw M6 L=20	1
43	951510016	螺钉M4 L=28	Screw M4 L=28	4
44	10122012	上轴螺母	Rubber plug	1
45	115012007	油圈	Oil shield	1
46	11423001	油圈	Oil can	1

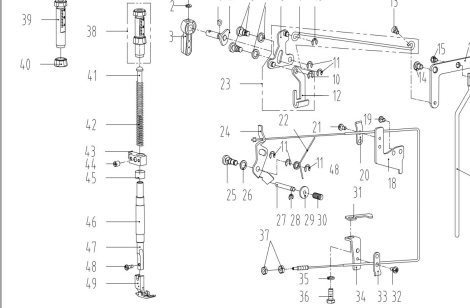
3



4. 针杆、变轴、下部部件/Needle bar & Upright Shaft & Hook Driving Shaft Components

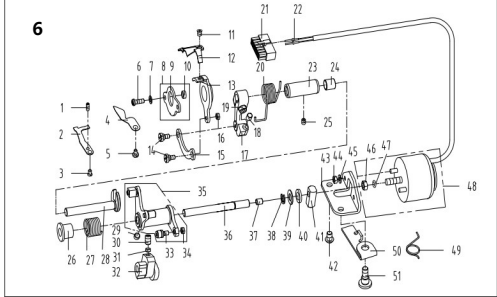
序号 NO	公司件号 Part NO	名称 PartName	零件描述 Description	数量 Number
1	10122013	针杆上轴套	Rubber plug	1
2	14103009	针杆上轴套	Needle bar bushing upper	1
3	10103009	针杆上轴套 (厚料)	Needle bar bushing upper (H)	1
4	11403009	针杆	Needle bar	1
3	10102021	针杆 (厚料)	Needle bar (H)	1
4	10138002	针杆连接器	Needle bar connecting rod	1
5	101511005	螺钉SM9/64"×40 L=6	Screw SM9/64"×40 L=6	1
10	10103010	针杆上轴套	Needle bar bushing lower	1
6	11303023	针杆下轴套 (厚料)	Needle bar bushing lower (H)	1
7	10113002	针杆轴套	Needle bar thread guide	1
11	11412063	针杆轴套	Needle bar thread guide (H)	1
10	10117001	针杆轴套	Needle (Di) Hx	1
8	10117002	针杆轴套	Needle DP5 #21 (厚料)	1
9	10413001	针杆下轴套	Lower bushing thread guide	1
10	10113009	针杆下轴套 (厚料)	Lower bushing thread guide (H)	1
10	104511006	螺钉SM1/4"×44 L=4.5	Screw SM1/4"×44 L=4.5	1
11	10109001	针杆连接器	Slide block	1
12	101511008	螺钉SM11/64"×40 L=8	Screw SM11/64"×40 L=8	2
13	10109002	针杆连接器	Upper shaft bevel gear	1
14	10425004	针杆连接器	Upper small bevel gear asm	1
15	10425002	针杆连接器	Upper large bevel gear asm	1
16	10425003	针杆连接器	Screw SM1/4"×40 L=7	2
18	10425001	针杆连接器	Hook drive shaft bevel gear	1
19	10151014	螺钉SM1/4"×40 L=7	Screw SM1/4"×40 L=7	2
20	10151014	螺钉SM1/4"×40 L=7	Screw SM1/4"×40 L=7	2
21	10151014	螺钉SM1/4"×40 L=7	Screw SM1/4"×40 L=7	2
22	113511036	螺钉SM15/64"×28 L=4.7	Screw SM15/64"×28 L=4.7	1
23	10403002	针杆轴套	Upright shaft bushing upper	1
24	10102007	针杆轴套	Upright shaft bushing lower	1
25	10403013	针杆轴套	Hook driving shaft bushing back	1
26	10403019	针杆轴套	Hook driving shaft snap ring	1
27	10108002	针杆轴套	Lower shaft middle bushing	1
28	11303021	针杆轴套	Hook driving shaft bushing front	1
29	13802303	针杆轴套	Hook driving shaft (H)	1
29	11304003	针杆轴套 (厚料)	Hook driving shaft bushing front (H)	1
30	11303021	针杆轴套 (厚料)	Hook driving shaft bushing front (H)	1
31	13823001	针杆轴套	Oil wick	1
32	10153005	针杆轴套	Set screw	1
33	11418023	针杆轴套	Hook arm (H) (H)	1
34	10118003	针杆轴套	Bobbin	1
35	10118001	针杆轴套	Bobbin (L)	1
36	11218504	针杆轴套	Bobbin case asm	1
37	10118001	针杆轴套	Bobbin case (L)	1
38	1012016	针杆轴套	Finger postioner	1
39	10112032	针杆轴套	Finger postioner (H)	1
40	101510105	螺钉SM1/4"×40 L=13	Screw SM1/4"×40 L=13	1
41	10151012	螺钉SM11/64"×40 L=4.8	Screw SM11/64"×40 L=4.8	2
42	113514020	螺钉SM11/64"×40 L=6	Screw SM11/64"×40 L=6	1

4



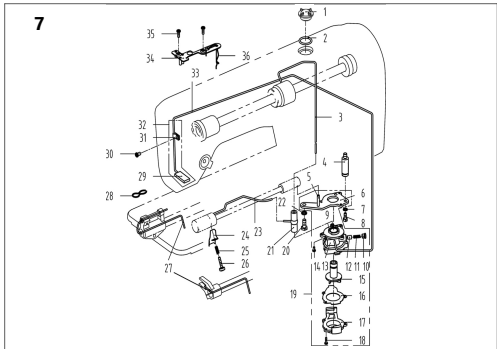
4. 压料、自动抬压部件/Presser Bar & Auto Lifter Components (1)

序号 NO	公司件号 Part NO	名称 PartName	零件描述 Description	数量 Number
1	101511010	螺钉SM9/64"×40 L=11	Screw SM9/64"x40 L=11	1
2	10128002	压料轴套	Washer	1
3	13811029	压料轴套	Hand lifter	1
4	0101004	压料轴套	Rubber ring	1
5	101000200	压料轴套	Hand lifter arm asm.	1
6	101520001	前压料轴套	Screw	2
7	10128015	压料轴套	Washer	2
8	101201100	压料轴套	Lift most lever component	1
9	10112013	压料轴套	Knee lifter pull rod	1
10	H050103	开口销	Snag ring 5	2
11	11329020	开口销	Snag ring 5	5
12	10112010	压料轴套	Lifting plate	1
13	10150004	压料轴套	Hinge Screw SM1/6"x32	1
14	101520003	压料轴套	Hinge screw SM15/64"x28	1
15	144520002	压料轴套	Hinge screw SM1/6"x32	1
16	11412002	压料轴套	Knee lifter back lever	1
17	114512001	压料轴套	Knee lifter connecting rod	1
18	11212009	压料轴套	Wire release bracket upper	1
19	101511004	螺钉SM3/16"×28 L=7	Screw SM3/16"x28 L=7	1
20	11212008	压料轴套	Wire release press plate	1
21	113511004	螺钉M4 L=8	Screw M4 L=8	1
22	11427009	压料轴套	Reset spring	1
23	1011200100	压料轴套	Knife lifter lever arm	1
24	114520000	压料轴套	Wire release plate asm	1
25	101520002	压料轴套	Wire release plate pin	1
26	10128015	压料轴套	Thread release supporting pin	1
27	10126003	压料轴套	Thread release supporting pin	1
28	H050102	开口销	Snag ring 4	1
29	10128001	压料轴套	Washer	1
30	10127003	压料轴套	Spring	1
31	10112022	压料轴套	Tube press plate	1
32	113511004	螺钉M4 L=8	Screw M4 L=8	1
33	11212008	压料轴套	Wire press	1
34	11312001	压料轴套	Wire release bracket lower	1
35	W02004	弹性圈	Spring washer	1
36	116530003	螺钉SM15/64"×28 L=14.5	Screw SM15/64"x28 L=14.5	1
37	113512001	压料轴套	Push SM15/32	2
38	1138110180	压料轴套	Press regulating screw nut asm	1
39	11381530003	压料轴套	Press regulating screw (H)	1
40	11381516005	压料轴套	Press regulating nut (H)	1
41	101201003	压料轴套	Press regulating guide bar	1
42	113821070	压料轴套	Press regulating spring	1
43	10127024	压料轴套	Press regulating spring (H)	1



6. 切线装置部件/Thread Trimmer Components

序号NO	公司件号	Part NO	名称	PartName	零件描述	Description	数量	Number
1	113515002		螺钉SM11/8*4 L=9.5		Screw SM11/8*4 L=9.5		1	
2	115019001		定刀		Screw SM11/8*4 L=9.5		1	
3	113517001		螺钉SM9/64*40 L=6		Screw SM9/64*40 L=6		1	
4	11312003		针刀片		Needle guard patch		1	
5	201511009		螺钉SM9/64*40 L=5.5		Screw SM9/64*40 L=5.5		1	
6	113511001		螺钉SM11/64*40 L=12		Screw SM11/64*40 L=12		2	
7	10128003		牙床连接轴衬圈		Washer		2	
8	1381201100		刀架压板零件		Knife bracket press component		2	
9	13812031		刀架压板		Knife bracket press		1	
10	13803012		短衬套		Short bushing		2	
11	113517002		螺钉SM11/64*40 L=4.4		Screw SM11/64*40 L=4.4		2	
12	114119002		活动刀		Motorsial knife		1	
13	11307001		刀架刀架		Knife bracket		1	
14	113520001		螺钉SM11/64*40 L=6.5		Screw SM11/64*40 L=6.5		2	
15	11312005		连杆		Connecting rod		1	
16	114516004		螺母SM11/64*40		Nut SM11/64*40		1	
17	11304001		曲柄		Crank		1	
18	113622014		曲柄驱动止动块		Crank driver stopper block		1	
19	2015004		螺钉M5 L=14		Screw M5 L=14		1	
20	11327001		弹簧		Spring		1	
21	11230004		14孔橡胶圈		Plug		1	
22	11230005		橡胶圈衬套		Pin		1	
23	11303003		切线轴衬套		Thread cutting shaft bushing		1	
24	11503005		驱动曲柄轴衬套		Crank drive shaft bushing		1	
25	113514002		螺钉SM11/64*40 L=6		Screw SM11/64*40 L=6		1	
26	11322002		切线轴盖		Spring cover		1	
27	11327002		弹簧		Spring		1	
28	11304002		切线轴曲柄轴衬套		Crank shaft		1	
29	101514001		螺钉SM1/4*40 L=6		Screw SM1/4*40 L=6		1	
30	114514005		螺钉SM1/4*40 L=10		Screw SM1/4*40 L=10		2	
31	11309030		凸轮滚柱		Push rod		2	
32	11310011		凸轮 (H)		Cam (H)		1	
33	11324001		滚柱		Rolling pin		1	
34	1138N516007		螺母SM11/64*40		Nut SM11/64*40		1	
35	113040050		切线轴驱动轴		Thread trimmer drive arm		1	
36	11302002		轴		Shaft		1	
37	11322001		驱动曲柄止动块		Positioning block		1	
38	H05013		GB/T896-1986垫圈6		Snap ring 6		1	
39	10112003		针杆曲柄衬套		Curtier weight protecting		1	
40	11322003		橡胶缓冲衬套		Solenoid cushion rubber		1	
41	11309001		切线轴轴衬套		Solenoid pin		1	
42	10151026		螺钉SM15/64*28 L=9		Screw SM15/64*28 L=9		1	
43	11312006		切线轴铁支架		Solenoid bracket		1	
44	W01901		螺母M4		Nut M4		1	
45	W02018		GB/T93-1987垫圈垫圈4		Washer 4		2	
46	112516006		螺母SM1/4*40		Nut SM1/4*40		1	
47	113622005		垫圈		Washer		1	
48	102300100		切线轴电磁铁零件		Thread trimmer solenoid aam.		1	
49	11327003		弹簧		Spring		1	
50	11312007		切线轴		Thread release bed		1	
51	113520002		螺钉SM1/4*28 L=13		Screw SM1/4*28 L=13		1	

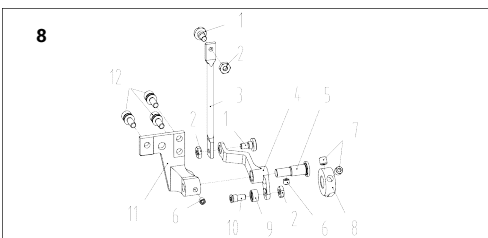


7. 润滑油部件/Oil Lubrication Components(1)

序号NO	公司件号	Part NO	名称	PartName	零件描述	Description	数量	Number
1	10111004		油窗		Oil sight window		1	
2	10122019		油窗O型圈		Rubber ring		1	
3	14121001		上轴油衬套		Main shaft oil tube		1	
4	101530008		油缸连接螺栓		Oil pump connecting stud		1	
5	10121001		供油管		Hook oil tube		1	
6	10112020		油缸安装板		Oil pump installing base		1	
7	W03002		弹簧垫圈 5		Spring washer 5		1	
8	200512001		螺钉SM11/64*40 L=10.5		Screw SM11/64*40 L=10.5		1	
9	10120022		油缸密封垫		Oil pump impeller		1	
10	101530007		柱塞螺钉		Punger Screw		1	
11	10127013		柱塞圈		Punger spring		1	
12	10122018		油缸衬套		Punger		1	
13	10120001		油缸体		Oil pump		1	
14	504093		油缸螺钉M3 L=6		Screw M3 L=6		3	
15	10111003		油缸叶轮		Oil pump impeller		1	
16	10112021		油缸密封垫圈		Oil pump impeller cover		1	
17	10111007		油缸盖		lubricating oil pump cover		1	
18	101530006		螺钉ST2.9 L=10		Screw ST2.9 L=10		3	
19	101200100		油缸密封件		lubricating oil pump component		1	
20	116530003		螺钉SM5/64*28 L=14.5		Screw SM5/64*28 L=14.5		1	

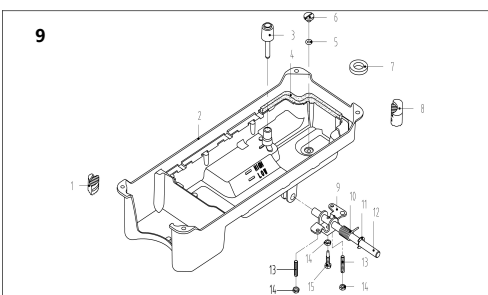
7. 润滑油部件/Oil Lubrication Components(2)

序号NO	公司件号	Part NO	名称	PartName	零件描述	Description	数量	Number
21	10136001		供油接头		Rubber joint		1	
22	W02004		GB/T93-1987垫圈垫圈4		Spring Washer M6		1	
23	13821303		下轴油衬套		Hook oil tube		1	
24	11321002		下轴油衬套(厚料)		Hook oil tube(H)		1	
25	11312011		油缸盖(厚料)		Oil shield cover(H)		1	
26	13827014		弹簧		Spring		1	
27	113530001		螺钉SM11/64*40 L=19		Screw SM11/64*40 L=19		1	
28	10420005		油缸		Oil well		2	
29	10127015		回油毡垫		Oil felt clamp		1	
30	10123006		回油毡		Oil felt felt		1	
31	10113023		回油毡垫		Oil tube clamp		1	
32	115021000		回油毡垫		Oil return tube component		1	
33	115021002		回油毡		Oil return tube		1	
34	10112025		回油毡垫		Oil well plate		1	
35	10151010		螺钉SM5/64*40 L=11		Screw SM5/64*40 L=11		2	
36	10123010		回油毡		Oil well		1	



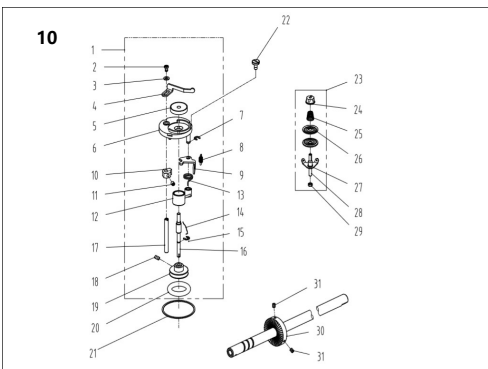
8. 步进抬压部件/Stepping Auto Lifter Components

序号NO	公司件号	Part NO	名称	PartName	零件描述	Description	数量	Number
1	1150N520001		抬压脚踏杆螺钉		Presser foot lifter screw		2	
2	118057005		橡胶圈		Woller nut		3	
3	115412001		自动抬压脚踏杆		Automatic presser foot lifter		1	
4	115404002		抬压脚踏杆曲柄		Driving crank of presser foot		1	
5	115426002		抬压脚踏杆曲柄销		Lifting presser foot to drive crank pin		1	
6	510014		螺钉M5 L=4		Screw M5 L=4		2	
7	100208		螺钉M5 L=6(进口)		Screw M5 L=6		2	
8	115410002		抬压脚踏杆		Presser foot cam		1	
9	13600002		滚轮		Roller		1	
10	136520003		弹簧螺钉		Roller screw		1	
11	115401001		抬压脚踏杆支架		Crank bracket for presser foot lifting		1	
12	1150N513002		螺钉SM3/16*28 L=10		Screw SM3/16*28 L=10		3	



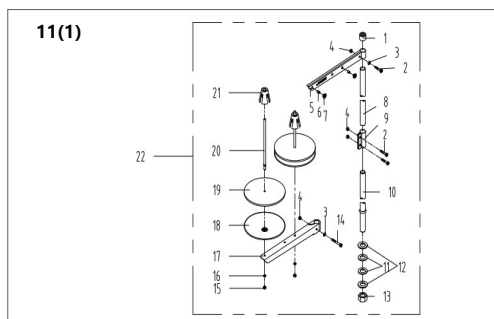
9. 油盘、膝抬压脚分组件/Oil Reservoir & Knee Lifter Components

序号NO	公司件号	Part NO	名称	PartName	零件描述	Description	数量	Number
1	10122022		油盘垫圈		Oil reservoir rubber cushion		2	
2	13801020		油盘		Oil Reservoir		1	
3	10111005		抬压脚踏杆		Knee lifter push rod		1	
4	10122020		油盘垫圈		Oil Reservoir gasket		1	
5	10122021		O型圈		Rubber ring		1	
6	101511028		螺钉SM5/16*24 L=7		Screw SM5/16*24 L=7		1	
7	10131001		油盘磁铁		Oil reservoir magnet		1	
8	10122023		油盘支架		Oil reservoir rubber cushion		2	
9	10112027		抬压脚踏杆曲柄		Knee lifter crank		1	
10	10127016		双向曲柄销		Knee lifter spring		1	
11	H05010		GB/T896-1986垫圈9		Snap ring 9		1	
12	10102011		抬压脚踏杆		Knee lifter shaft		1	
13	101515012		螺钉M6 L=30		Screw M6 L=30		2	
14	101516004		螺母M6 L=4		Nut M6 L=4		3	
15	101512002		螺钉M6 L=26		Screw M6 L=26		1	



10. 绕线部件/Winding Components

序号NO	公司件号	Part NO	名称	PartName	零件描述	Description	数量	Number
1	138310300		绕线组件		Bobbin winder asm		1	
2	114511008		螺钉M4 L=6		Screw M4 L=6		1	
3	W01142		垫圈4		Washer 4		1	
4	10113030		压板衬套		Thread press control plate		1	
5	10111120		绕线衬垫		Winding pad		1	
6	13831101		绕线轴衬套		Bobbin winder bed		1	
7	H05006		开口销圈5		Snap ring 5		1	
8	10327001		弹簧		Spring		1	
9	13812110		调节板		Regulating plate		1	
10	10110030		绕线轴衬套		Bobbin winder cam		1	
11	509045		螺钉M5 L=5		Screw M5 L=5		1	
12	1380510020		绕线轴连接件		Bobbin winder connecting rod		1	
13	13827103		绕线轴衬套		spring		1	
14	10127060		弹簧		Spring		1	
15	GB/T 896-1986		开口销圈4		Snap ring 4		1	
16	13802111		绕线轴衬套		Bobbin winder main shaft		1	
17	13802006		绕线轴衬套		Bobbin winder cam shaft		1	
18	509103		螺钉M4 L=4		Screw M4 L=4		2	
19	13811102		绕线轴		Bobbin winder wheel		1	
20	000110		O型圈		Ring		1	
21	11422062		密封垫		Washer		1	
22	114511003		螺钉SM3/16*28 L=10		Screw SM3/16*28 L=10		3	
23	1411300400		绕线轴衬套		Bobbin thread tension arm		1	
24	141516019		夹线螺母		Thread tension nut		1	
25	11427006		小夹线螺母		Spring		1	
26	14112015		夹线板		Thread tension disk		2	
27	11413022		夹线板衬套		Thread tension guide plate		1	
28	112513004		夹线螺钉		Screw		1	
29	114516001		螺母SM1/64*40		Nut SM1/64*40		1	
30	11450013		驱动轴衬套		Driving wheel		1	
31	S10009		螺钉M5 L=8		Screw M5 L=8		2	



11. 机头附件(1)-线架组件/Machine Head Accessories (1)-Thread Stand Components

序号 NO	公司件号	Part NO	名称	PartName	零件描述	Description	数量	Number
1	20131019		线架杆固定衬套		Spool rest rod rubber cap		1	
2	504050		螺母M5 L=16		Screw M5 L=16		3	
3	W01047		垫圈M5		Washer M5		2	
4	N01034		螺母M5		Nut M5		4	
5	13831022		上轴架衬套		Spool rest arm upper		1	
6	10113011		过线圈(内)		Thread guide ring		2	
7	10113010		过线圈(外)		Thread guide ring		1	
8	13831019		线架杆上节		Spool rest rod upper		1	
9	13831021		线架杆接头		Spool rest rod joint		1	
10	13831020		线架杆下节		Spool rest rod lower		1	
11	10122106		螺母M5		Spool rest rod rubber ring		2	
12	W01052		垫圈M16		Washer M16		2	
13	N02008		螺母 M16		Spool rest rod nut M16		1	
14	504051		螺母M5 L=31.6		Spool rest arm lower screw M5 L=31.6		1	
15	N01034		螺母M5		Nut M5		2	
16	W03002		弹簧垫圈 5		Spring washer 5		2	
17	13831023		线架杆衬套		Spool rest arm lower		1	
18	13831024		线架杆		Spool rest		2	
19	20131010		线架垫圈		Spool rest cushion		2	
20	20131006		线架钉		Spool pin		2	
21	13831025		线架回位销		Spool restanator		2	
22	138310300		线架固定轴		Thread stand asm.		1	