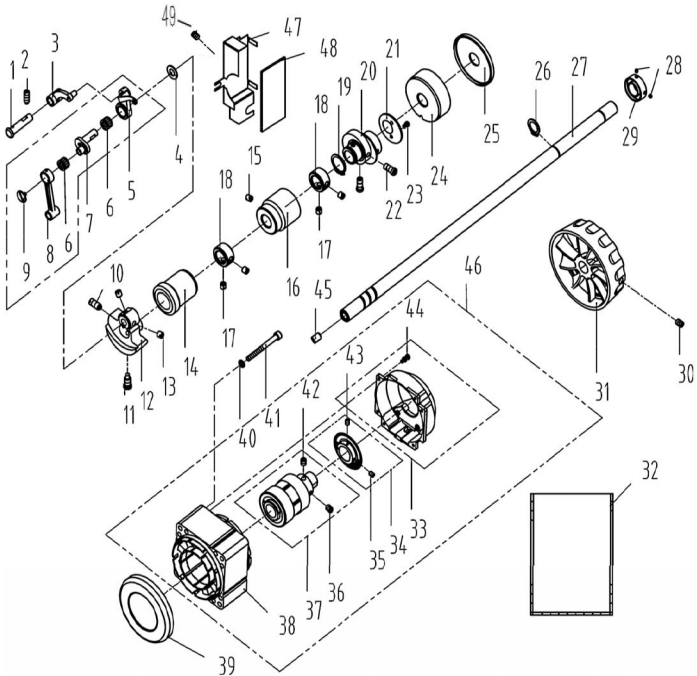


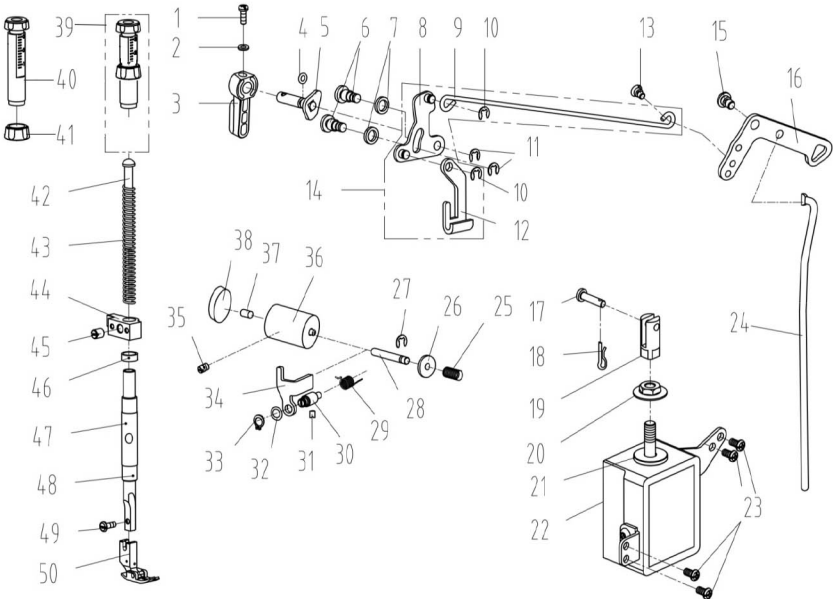
1. 机壳、外装部件/Machine Frame & Miscellaneous Cover Components

序号 NO	公司件号	Part NO	名称	PartName	零件描述	Description	数量	Number
1	101S11001		螺钉SM3/16"×28 L=9		Screw SM3/16"×28 L=9		15	
2	10122003		面板调节孔螺塞		Rubber plug		2	
3	115037001		面板商标牌		Head card		1	
4	930000262		面板(喷漆)		Face plate asm		1	
5	115001003		面板		Face plate asm		1	
6	13813005		左线钩		Thread guide left		1	
7	115022002		面板垫		Face plate gasket		1	
8	101S11027		螺钉SM1/8"×44 L=3.4		Screw SM1/8"×44 L=3.4		1	
9	113812019		面部防油板		Face oil shield asm		1	
	11412082		面部防油板(厚料)		Face oil shield asm(H)		1	
10	11503002100		倒缝开关组件(三开关)(琦星)		Three switch components(Q)		1	
	11503000600		倒缝开关组件(三开关)(鲍麦)		Three switch components(Power Max)		1	
11	101S11004		螺钉SM3/16"×28 L=7		Screw SM3/16"×28 L=7		2	
12	13812018		挑线杆防护罩		Thread take-up lever cover		1	
13	10122004		针杆曲柄螺孔塞		Rubber plug		1	
14	10122005		挑线连杆销螺孔塞		Rubber plug		1	
15	101S11004		螺钉SM3/16"×28 L=7		Screw SM3/16"×28 L=7		1	
16	13512004		三孔线勾		3-hole thread guide		1	
17	10122005		挑线连杆销螺孔塞		Rubber plug		1	
18	114S11015		螺钉SM9/64"×40 L=6		Screw SM9/64"×40 L=6		2	
19	11419001		割线刀		Knife		1	
20	138S05001		螺钉M3 L=12		Screw M3 L=12		2	
21	13822001		操作屏孔塞		Rubber plug		2	
22	21012018		油封垫		Oil sealing washer		1	
23	21022007		油封		Rubber plug		1	
24	114922003		后窗板垫		Side plate gasket		1	
25	114912001		后窗板		Side plate		1	
26	930000236		后窗板(喷漆)		Side plate		1	
27	13812109		侧盖固定板		Fixed plate		1	
28	S04010		螺钉M4 L=5.5		ScrewM4 L=5.5		1	
29	H05002		卡簧3		Circlip 3		1	
30	138S30007		侧盖盖螺钉SM3/16"×28		Screw SM3/16"×28		1	
31	113811004		尼龙扎带		Cable band		6	
32	115026002		电控罩壳销		Pin		1	
33	11503001400		一体机电控罩壳(鲍麦)		Servo motor box(Power Max)		1	
	11503003100		一体机电控罩壳(鲍麦)(+)		Servo motor box(Power Max)(+)		1	
34	11503001300		一体机电控组件(鲍麦)		Electronic components(Power Max)		1	
35	11503001100		一体机电控组件(琦星)		Electronic components(Q)		1	
36	114S13001		螺栓(内六角)M5 L=20		Screw M5 L=20		1	
37	114S13001		螺栓(内六角)M5 L=20(鲍麦)		Screw M5 L=20(Power Max)		4	
	S05901		内六角圆柱头螺钉M5 L=50(琦星)		Screw M5 L=50(Q)		3	
38	W01009		垫圈 5		Washer 5		3	
39	114130006		无线通信模块(+)		RF wireless data communication module(+)		1	
40	10122007		下轴工艺孔塞		Rubber plug		1	
	11503003300		一体机电控面板组件(琦星)		Control panel(Q)		1	
41	11503001200		一体机电控面板组件(鲍麦)		Control panel(Power Max)		1	
	11503003000		一体机电控面板组件(鲍麦)(+)		Control panel(Power Max)(+)		1	
42	14322007		橡皮塞(双孔)		Rubber plug		1	
43	138S08006		螺钉SM3/16"×28 L=7		Screw SM3/16"×28 L=7		1	
44	13810008		小夹线器螺柱		Thread tension post		1	
45	13812066		过线板		Thread tension guide plate		1	
46	14112017		小夹线板		Thread tension disk		2	
47	11227001		小夹线弹簧		Thread tension spring		1	
48	141S16019		小夹线器螺母		Thread tension nut		1	
49	1411300400		小夹线器组件		Thread tension asm		1	
	14111300200		夹线器组件		Thread tension asm		1	
50	1411300500		夹线器组件(厚料)		Thread tension asm(H)		1	
51	141S16013		夹线螺母		Thread tension nut		1	
52	10112007		夹线制动板		Thread disk rotating stopper		1	
	10127002		夹线弹簧		Thread tension spring		1	
53	11427050		夹线弹簧(厚料)		Thread tension spring A (H)		1	
54	14112016		松线板		Disk stopper		1	
55	14112015		夹线板		Thread tension disk		2	
56	141S30001		夹线螺钉		Thread tension post		1	
	10127001		挑线簧		Thread take-up spring		1	
57	10127031		挑线簧(厚料)		Thread take-up spring(H)		1	
58	10103011		挑线簧调节座		Thread tension base		1	
59	10122014		挑线簧调节座O型圈		Rubber ring		1	
60	101S15005		螺钉SM9/64"×40 L=5.5		Screw SM9/64"×40 L=5.5		1	
61	11326012		松线钉		Tension release pin		1	
62	101S11007		螺钉SM11/64"×40 L=6		Screw SM11/64"×40 L=6		2	
63	10113004		右线勾		Thread guide right		2	
64	101S15010		螺钉SM15/64"×28 L=10.5		Screw SM15/64"×28 L=10.5		1	
65	401S16001		螺母SM11/64"×40		Nut SM9/64"×40		1	
66	11413011		固定式缓线钩		Thread guide		1	
67	101S11002		螺钉SM11/64"×40 L=5.5		Screw SM11/64"×40 L=5.5		1	
68	13812019		卷边器座		Ruler stop seat		1	
69	207S14007		凹端紧定螺钉 M4 L=6		Screw M4 L=6		1	
70	11493000300		电子夹线器组件		Nest less e-device		1	
71	104S17002		针板螺钉SM11/64"×40 L=6.5		Screw SM11/64"×40 L=6.5		2	
	13815011		针板(2.0)		Needle plate		1	
72	11315001		针板(厚料)		Needle plate(H)		1	
	10815001		针板(-7)		Needle plate(-7)		1	
73	140S12001		底板支柱		Machine head stud		2	
74	101S11019		螺钉SM3/32"×56 L=2		Slide plate SM3/32×56 L=2		2	
75	10127009		推板簧		Slide plate spring		1	
76	10115002		推板		Screw SM3/32"×56 L=2		1	
77	101S11026		螺钉SM15/64"×28 L=9		Screw SM15/64"×28 L=9		1	



2. 上轴、挑线部件/Main Shaft & Thread Take-up Components

序号NO	公司件号	Part NO	名称	PartName	零件描述	Description	数量	Number
1	10126001		挑线连杆销		Thread take-up connecting rod pin		1	
2	101S15001		螺钉SM15/64"x28 L=15		Screw SM15/64"x28 L=15		1	
3	10105001		挑线连杆		Thread take-up connecting rod(H)		1	
4	10112003		针杆曲柄护板		Needle bar crank protecting plate		1	
5	1013800100		挑线杆分组件		Thread take-up lever asm		1	
	1133800200		挑线杆组件(厚料)		Thread take-up lever asm(H)		1	
6	10124001		挑线杆滚针轴承		Needle bearing		2	
	1011000100		挑线曲柄分部件		Thread take-up crank		1	
7	1011000400		挑线曲柄分部件(厚料)		Thread take-up crank(H)		1	
	11310010		挑线曲柄分部件(中厚料)		Thread take-up crank(H-M)		1	
8	10105002		针杆连杆		Needle bar connecting rod		1	
9	101S17001		螺钉SM9/64"x40(左旋) L=4.8		Screw SM9/64"x40(左旋) L=4.8		1	
10	101S15004		螺钉SM9/32"x28 L=16		Screw SM9/32"x28 L=16		1	
11	101S11003		螺钉SM9/32"x28 L=16		Screw SM9/32"x28 L=16		1	
12	10404001		针杆曲柄		Needle bar crank		1	
	11404035		针杆曲柄(厚料)		Needle bar crank(H)		1	
13	101S15002		螺钉SM1/4"x40 L=6		Screw SM1/4"x40 L=6		2	
14	1140300200		上轴前轴套组件		Main shaft bushing front		1	
15	101S15006		螺钉SM15/64"x28 L=7		Screw SM15/64"x28 L=7		1	
16	12203002		主轴中轴套		Main shaft bushing mid		1	
17	101S14001		螺钉SM1/4"x40 L=6		Screw SM1/4"x40 L=6		4	
18	10108001		上轴挡圈		Main shaft thrust collar		2	
19	H03002		挡圈20		Snap ring 20		1	
	400092		送料偏心轮		Feed eccentric cam		1	
	400006		送料偏心轮(中厚料)(H-7)		Feed eccentric cam (H-M)(H-7)		1	
21	10112017		送料偏心轮盖板		Cover plate		1	
22	101S11013		螺钉SM1/4"x40 L=13		Screw SM1/4"x40 L=13		2	
23	113S11003		螺钉SM9/64"x40 L=5		Screw SM9/64"x40 L=5		2	
24	13803002		上轴后轴套		The rear axle sleeve		1	
25	10122105		上轴后套挡油密封		Oil seal		1	
26	H03001		GB/T894.1-1986挡圈15		Snap ring 15		1	
27	115002002		上轴		Main shaft		1	
28	S10026		螺钉M3 L=3		Screw M3 L=3		2	
29	115008001		电机防尘套		Motor dust jacket		1	
30	S10009		螺钉		Screw		2	
31	302830		手轮(喷漆)		Handwheel		1	
32	13831015		塑料袋28x18(cm)厚0.03mm		Plastic bag 28cmx18cmx0.03mm		1	
	195100073		电机罩壳组件(配琦星)		Motor cover asm(Q)		1	
33	95100172		电机罩壳组件(配鲍麦)		Motor cover asm(Power Max)		1	
	195100112		电机光栅组件(配琦星)		Motor grating sensor asm(Q)		1	
	95100116		电机光栅组件(配鲍麦)		Motor grating sensor asm(Power Max)		1	
35	S09022		内六角平端紧定螺钉M3 L=4		Screw M3 L=4		1	
36	S09162		内六角平端紧定螺钉M6 L=6		Screw M6 L=6		1	
37	95100182		电机转子总成		Motor rotor		1	
38	95100171		电机定子总成		Motor stator		1	
39	13811060		电机绝缘防护罩		Motor insulation shield		1	
40	W02058		GB 93-1987弹垫d5		Spring washer 5		3	
41	S05901		螺钉M5 L=50		Screw M5 L=50		3	
42	S09162		内六角平端紧定螺钉M6 L=6		Screw M6 L=8		1	
43	S09022		内六角平端紧定螺钉M3 L=4		Screw M3 L=4		1	
44	951S15011		螺钉组合件M3 L=12		Screw Asm M3 L=12		5	
45	10122012		上轴孔塞		Rubber plug		1	
	115033007		光电伺服电机(琦星)		Motor(Q)		1	
46	113833087		光电伺服电机(鲍麦)		Motor(Power Max)		1	
47	14112004		防油罩		Oil shield		1	
48	14123001		防油罩油棉		Oil cotton		1	
49	141S11002		螺钉SM3/16"x28 L=4.5		Screw SM3/16"x28 L=4.5		1	

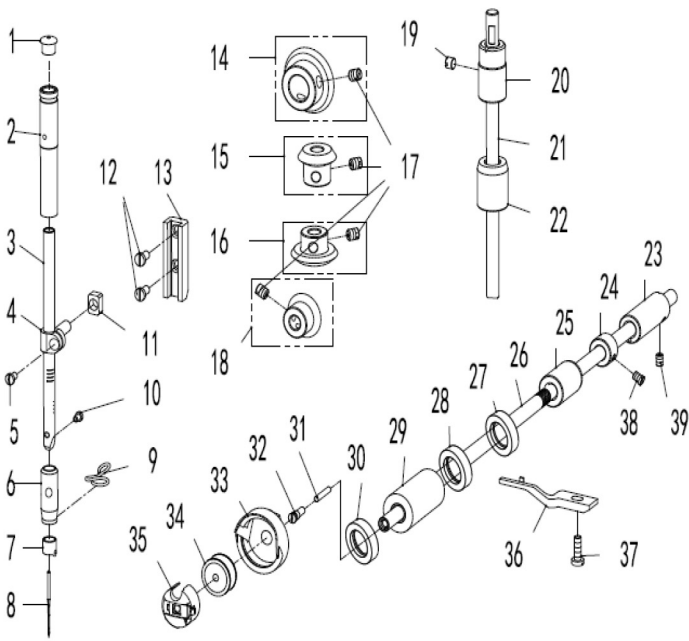


### 3. 压料、自动抬压脚部件(1)/Presser Bar & Auto Lifter Components (1)

序号 NO	公司件号 Part NO	名称 PartName	零件描述 Description	数量 Number
1	101S11010	压脚扳手螺钉SM9/64"x40 L=11	Screw SM9/64"x40 L=11	1
2	10128002	压脚扳手螺钉垫圈	Washer	1
3	13811029	压脚板手	Hand lifter	1
4	O01004	O型圈	Rubber ring	1
5	1411000200	压脚板手凸轮分部件	Hand lifter cam asm.	1
6	101S20001	前杠杆螺纹销	Screw	2
7	10128015	螺纹销橡胶垫圈	Washer	2
8	1411201100	抬压脚前杠杆分部件	Lift front lever component	1
9	14312012	抬压脚拉杆	Knee lifter pull rod	1
10	H05003	GB/T896-1986挡圈 5	Snap ring	2
11	11329020	挡圈 5	Snap ring	2
12	14112018	压脚升降板	Lifting plate	1
13	101S20004	抬压脚拉杆螺钉SM3/16"x32	Hinge Screw SM3/16"x32	1
14	1431201200	抬压脚前杠杆组件	Knee lifter lever asm	1
15	101S20003	后杠杆轴位螺钉SM15/64"x28	Hinge screw SM15/64"x28	1
16	11312034	抬压脚后杠杆	Knee lifter back lever	1
17	11326005	销子	Pin	1
18	113829001	R形弹性开口销φ1.5	Cotter pin	1
19	11326006	电磁铁接头	Solenoid connector	1
20	113516004	法兰螺母M8	Flange nuts M8	1
21	11322008	电磁铁上垫片	washer	1
22	11493000600	抬压脚电磁铁组件	Solenoid asm.	1
23	101S11001	螺钉SM3/16"x28 L=9	Screw SM3/16"x28 L=9	4
24	114112022	抬压脚顶杆	Knee lifter connecting rod	1
25	10127003	松线辅助弹簧	Spring	1
26	10128001	松线辅助垫片	Washer	1
27	H05012	挡圈4 (日标)	Snap ring	1
28	10126003	松线辅助钉	Thread release supporting pin	1
29	114127002	松线顶板复位簧	Spring	1
30	115026001	松线顶板连接销	Pin	1
31	138S08006	螺钉SM3/16 "x28 L=7	Screw SM3/16 "x28 L=7	1
32	14128001	松线顶板垫片	Loose top gasket	1
33	H03054	GB/T894.1-1986挡圈6	Snap ring 6	1
34	14101017	松线顶板	Wire release plate	1
35	138S08006	螺钉SM3/16 " L=7	Screw SM3/16 " L=7	1
36	11503002000	松线电磁铁组件	Solenoid	1
37	12922015	橡皮塞	Spout plug	1
38	114122006	松线油封	Oil seal	1
39	11381101800	调压螺钉组件	Presser regulating screw nut asm	1
40	1138NS30003	调压螺钉(厚料)	Press regulating screw (H)	1
41	1138NS16005	调压螺母(厚料)	Press regulating nut(H)	1
42	10102003	调压导杆	Press regulating guide bar	1
43	113827010	调压簧	Press regulating spring	1
	10127024	调压簧(厚料)	Press regulating spring(H)	1
44	13809030	压杆导架	Presser bar guide bracket	1
45	101S15007	螺钉 SM1/4"x40 L=8	Screw SM1/4"x40 L=8	1
46	10122112	压杆防油套	Pressure bar oil cover	1
47	113803007	压杆衬套	Presser bar bushing,lower	1

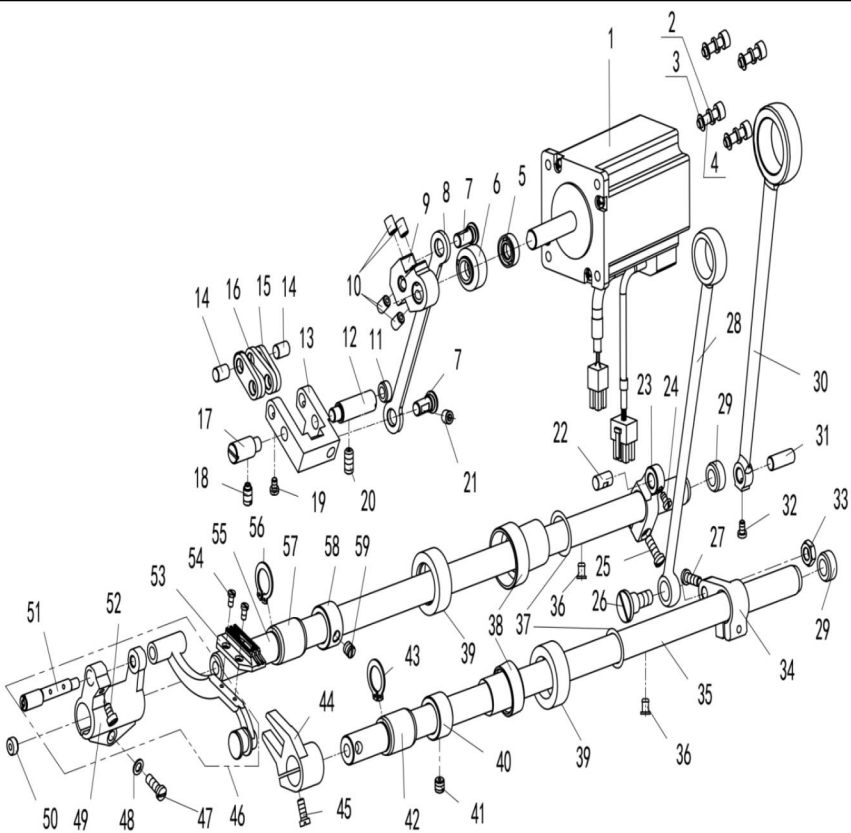
3. 压料、自动抬压脚部件(2)/Presser Bar & Auto Lifter Components (2)

序号NO	公司件号 Part NO	名称 PartName	零件描述 Description	数量 Number
48	113802009	压杆	Presser bar	1
49	101S11009	螺钉SM9/64"x40 L=10.5	Screw SM9/64"x40 L=10.5	1
50	1131600600	压脚组件	Presser foot asm	1
	1131600300	压脚组件(厚料)	Presser foot asm(H)	1



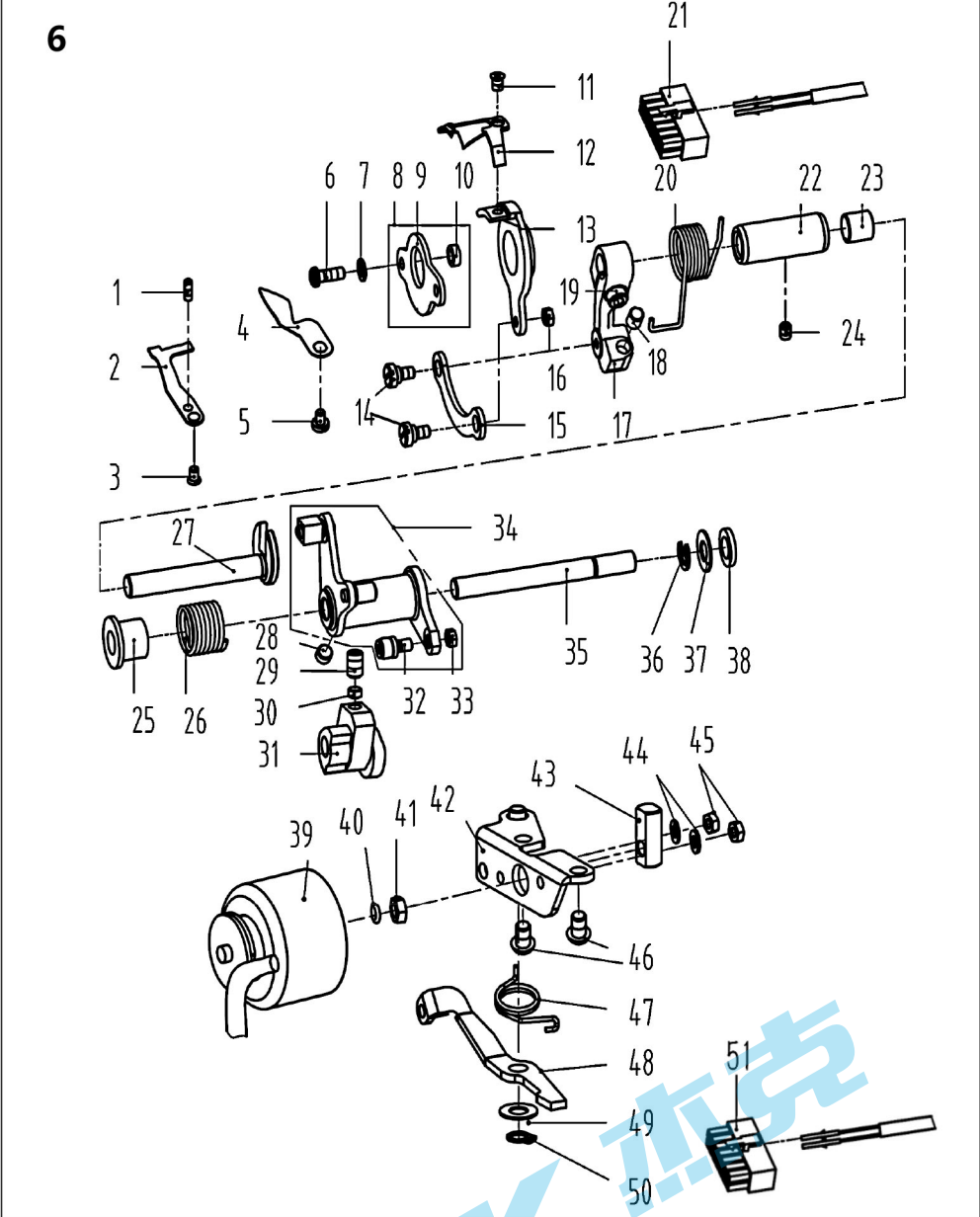
#### 4. 针杆、竖轴、下轴部件/Needle bar & Upright Shaft & Hook Driving Shaft Components

序号NO	公司件号	Part NO	名称	PartName	零件描述	Description	数量	Number
1	10122013		针杆上衬套孔塞		Rubber plug		1	
2	14103009		针杆上衬套		Needle bar bushing upper		1	
	10103009		针杆上衬套 (厚料)		Needle bar bushing upper(H)		1	
3	11402039		针杆		Needle bar		1	
	10102021		针杆(厚料)		Needle bar (H)		1	
4	10138002		针杆连接柱		Needle bar connecting rod		1	
5	101511005		螺钉SM9/64"x40 L=6		Screw SM9/64"x40 L=6		1	
	10103010		针杆下衬套		Needle bar bushing lower		1	
6	11303023		针杆下衬套(厚料)		Needle bar bushing lower(H)		1	
7	10113002		针杆线勾		Needle bar thread guide		1	
	11412063		针杆线勾(厚料)		Needle bar thread guide(H)		1	
8	13817001		机针(定位14#)		Needle		1	
	10117002		机针DP×5#21(厚料)		Needle(H)		1	
	10413001		针杆下衬套线勾		Lower bushing thread guide		1	
9	10113009		针杆下衬套线勾(厚料)		Lower bushing thread guide(H)		1	
10	104511006		螺钉(进口) SM1/8"x44 L=4.5		Screw SM1/8"x44 L=4.5		1	
11	10109001		针杆连接柱滑块		Slide block		1	
12	101511008		螺钉SM11/64"x40 L=8		Screw SM11/64"x40 L=8		2	
13	10109002		针杆接头滑块导轨		Needle bar guide		1	
14	10425004		上轴伞齿轮		Upper shaft bevel gear		1	
15	10425003		竖轴上伞齿轮		Upper small bevel gear asm		1	
16	10425002		竖轴下伞齿轮		Lower large bevel gear asm		1	
17	101515014		螺钉SM1/4"x40 L=7		Screw SM1/4"x40 L=7		8	
18	10425001		下轴伞齿轮		Hook drive shaft bevel gear		1	
19	113511036		螺钉SM15/64"x28 L=4.7		Screw SM15/64"x28 L=4.7		1	
20	10403020		竖轴上轴套		Upright shaft bushing upper		1	
21	10102007		竖轴		Upright shaft		1	
22	113803004		竖轴下轴套		Upright shaft bushing lower		1	
23	10403019		下轴后轴套		Hook driving shaft bushing back		1	
24	115008002		下轴挡圈		Hook driving shaft snap ring		1	
25	14003004		下轴中套		Lower shaft middle bushing		1	
26	14402003		下轴		Hook driving shaft		1	
27	11522001		油封组件12		Oil seal 12		1	
28	114122004		下轴前轴油封(大)		Oil seal		1	
29	14003001		下轴前轴套组件		Hook driving shaft bushing front		1	
30	1142201600		油封组件		Oil seal		1	
31	13823001		下轴限油芯		Oil wick		1	
32	101530005		下轴限油螺钉SM3/16"×32		Set screw SM3/16"×32		1	
	11418003		广濂中厚料旋梭(广"大缝纫范围)		Hook asm (Hirose)		1	
33	11418004		广濂厚料旋梭(新)(有尾巴)(厚料)		Hook asm(Hirose)(H)		1	
34	10118003		梭心		Bobbin		1	
35	11218504		梭壳		Bobbin case asm.		1	
	10112016		旋梭定位钩		Finger postioner		1	
	10112032		旋梭定位钩(厚料)		Finger postioner(H)		1	
36	116511005		螺钉SM11/64"×40 L=13		Screw SM11/64"×40 L=13		1	
37	101511012		螺钉SM11/64"×40 L=4.8		Screw SM11/64"×40 L=4.8		2	
38	101511012		螺钉SM11/64"×40 L=4.8		Screw SM11/64"×40 L=4.8		2	
39	113514020		螺钉SM11/64"×40 L=6		Screw SM11/64"×40 L=6		1	



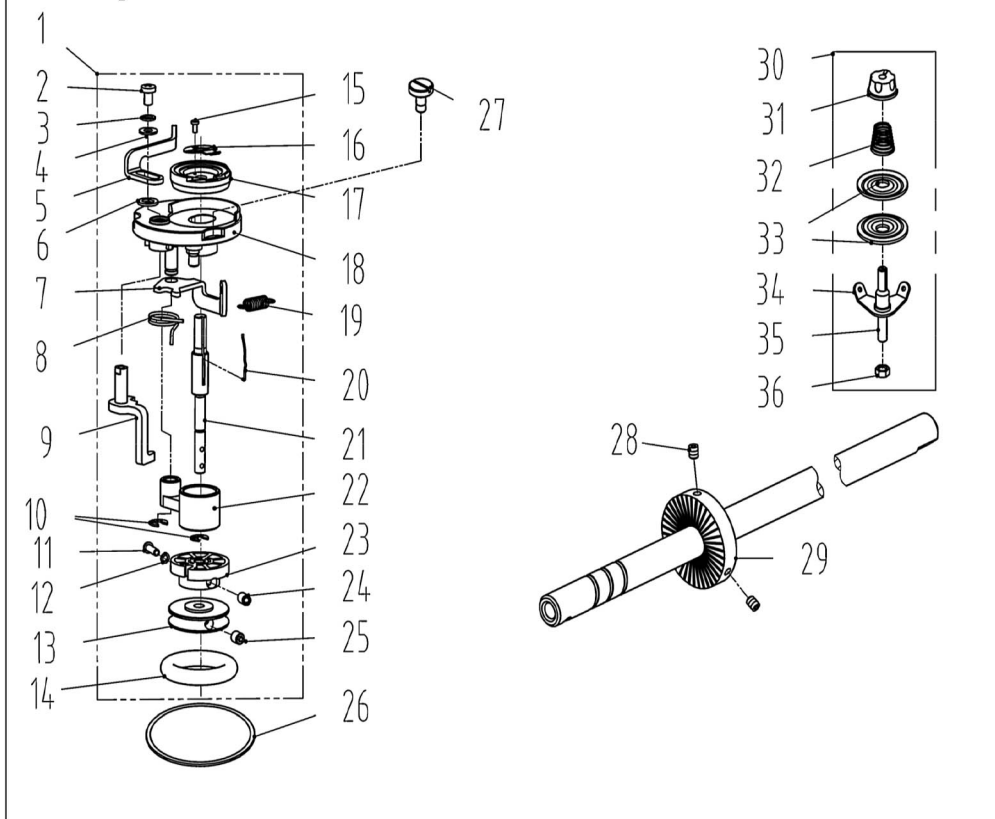
5. 送料部件/Feed Mechanism Components

序号NO	公司件号	Part NO	名称	PartName	零件描述	Description	数量	Number
1	115033004		步进电机(琦星1000线)(-7)		Stepper motor(Q)(-7)		1	
	115033002		步进电机(鲍麦)		Stepper motor(Power Max)		1	
2	W03002		弹簧垫圈5		Spring washer 5		4	
3	10128003		平垫圈5		Washer 16		4	
4	409511020		螺钉SM3/16"x28 L=15.5		Screw SM3/16"x28 L=15.5		4	
5	114922002		步进电机轴套油封		Stepper motor bushing oil seal		1	
6	114903001		步进电机轴套		Stepper motor bushing		1	
7	114926001		针距曲柄销		Needl gage crank pin		2	
8	114905001		针距连杆		Needle pitch rod		1	
9	114904001		针距曲柄		Needl gage crank		1	
10	S10009		螺钉M6 L=8		Screw M6 L=8		4	
11	14022015		右销孔塞		spout plug		1	
12	10126010		送料摆动板座右销		Right pin		1	
	114901001		送料摆动板座		Feed shaking plate bed components		1	
13	114901004		送料摆动板座(-7)		Feed shaking plate bed components(-7)		1	
14	10126007		短摆动板连杆销		Connecting pin		2	
	11412022		送料短摆动板		Feed short shaking plate		2	
15	13809007		送料短摆动板(厚料)		Feed short shaking plate(H)		2	
16	13809008		送料长摆动板		Feed long shaking plate		2	
17	10126009		送料摆动板座右销		Left pin		1	
18	101S15010		螺钉 SM15/64"x28 L=10.5		Screw SM15/64"x28 L=10.5		1	
19	101S11005		螺钉 SM9/64"x40 L=6		Screw SM9/64"x40 L=6		2	
20	113S14010		螺钉SM15/64"x28 L=12		Screw SM15/64"x28 L=12		1	
21	101S14001		螺钉SM1/4"x40		Screw SM1/4"x40		1	
22	10126011		送料曲柄销		Feed rocker crank pin		1	
	10104002		送料曲柄		Feed rocker shaft crank		1	
	11304010		送料曲柄(-7)		Feed rocker shaft crank(-7)		1	
24	101S11005		螺钉SM9/64"x40 L=6		Screw SM9/64"x40 L=6		1	
25	101S11016		螺钉SM3/16"x28 L=14		Screw SM3/16"x28 L=14		1	
26	101S20005		抬牙连杆轴位螺钉 SM9/32"x28		Hinge Screw SM9/32"x28		1	
27	101S11016		螺钉 SM3/16"x28 L=14		Screw SM3/16"x28 L=14		1	
28	400093		抬牙连杆		Connecting rod		1	
29	114022002		橡皮塞15.5		Rubber plug 15.5		2	
	400091		送料连杆		Rocker shaft connecting rod		1	
30	13805002		送料连杆(厚料)		Rocker shaft connecting rod(H)		1	
	400083		送料连杆(-7)		Rocker shaft connecting rod(-7)		1	
31	10126006		送料连杆销		Connecting rod pin		1	
32	101S11005		螺钉SM9/64"x40 L=6		Screw SM9/64"x40 L=6		1	
33	101S16003		抬牙连杆轴位螺母 SM9/32"x28		Hinge Screw SM9/32"x28		1	
34	10104004		抬牙后曲柄		Feed driving shaft crank		1	
35	14402007		抬牙轴		Feed driving shaft		1	
36	14022008		送料轴油线孔塞		Plug		2	
37	114022001		送料轴后轴套密封圈		Rubber ring		2	
38	14003002		送料轴后轴套		Axle sleeve		2	
39	1142200800		油封组件22		Oil seal		2	
40	10108003		送料轴挡圈		Feed rocker shaft snap ring		1	
41	101S15002		螺钉SM1/4"x40 L=6		Screw SM1/4"x40 L=6		2	
42	10403015		轴套		Bushing		1	
43	H03001		GB/T894.1-1986挡圈 15		Snap ring 15		1	
	10104003		抬牙叉形曲柄		Driving shaft crank		1	
44	10804003		抬牙叉形曲柄(厚料)		Driving shaft crank(H)		1	
	10804003		抬牙叉形曲柄(-7)		Driving shaft crank(-7)		1	
45	1138NS30004		螺钉SM11/64"x40 L=10.5		Screw SM11/64"x40 L=10.5		1	
46	11380700300		牙架组件(鲍麦, -H)		Feed bar asm(Power Max & -H)		1	
	400672		牙架组件		Feed bar asm		1	
47	101S11016		螺钉SM3/16"x28 L=14		Screw SM3/16"x28 L=14		1	
48	10128003		牙架座螺钉垫圈		Washer		1	
49	480095		牙架座		Feed bar bed.		1	
50	14022003		送料轴前孔塞		Spout plug		1	
51	10401007		牙架销(自制)		Feed bar pin		1	
52	101S11025		螺钉SM11/64"x40 L=7		Screw SM11/64"x40 L=7		1	
	13814005		送料牙		Feed dog		1	
53	11314001		送料牙(厚料)		Feed dog (H)		1	
	11414001		送料牙(-7)		Feed dog (-7)		1	
54	101S11018		螺钉 SM1/8"x44 L=6		Screw SM1/8"x44 L=6		2	
55	14402008		送料轴		Feed rocker shaft		1	
56	H03001		GB/T894.1-1986挡圈 15		Snap ring 15		1	
57	10403015		轴套		Bushing		1	
58	10108003		送料轴挡圈		Feed rocker shaft snap ring		1	
59	101S15002		螺钉SM1/4"x40 L=6		Screw SM1/4"x40 L=6		2	



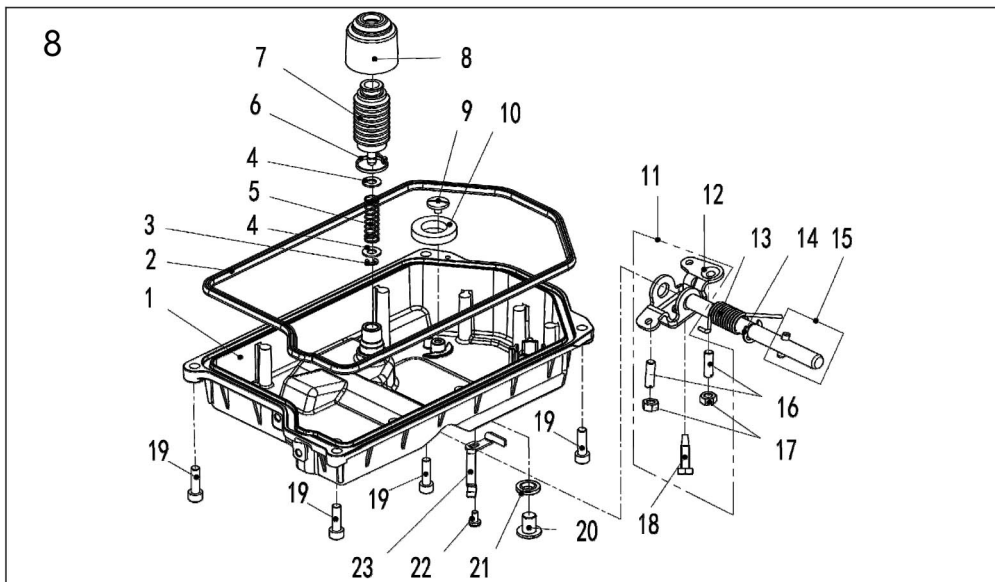
6. 切线部件/Thread Trimmer Components

序号NO	公司件号	Part NO	名称	PartName	零件描述	Description	数量	Number
1	113S15002		螺钉SM1/8"x44 L=9.5		Screw SM1/8"x44 L=9.5		1	
2	115019001		定刀		Secant knife		1	
3	113S17001		螺钉SM9/64"x40		Screw SM9/64"x40		1	
4	11312003		护针片		Needle guard patch		1	
5	201S11009		螺钉SM9/64"x40 L=5.5		Screw SM9/64"x40 L=5.5		1	
6	113S11001		螺钉SM11/64"x40 L=12		Screw SM11/64"x40 L=12		2	
7	10128003		牙架座螺钉垫圈		Washer		2	
8	14012004		刀架压板组件		Knife bracket press component		1	
9	14012032		偏心连杆		Eccentric connecting rod		1	
10	11303012		短套		Short bushing		2	
11	113S17002		螺钉SM11/64"x40 L=4.4		Screw SM11/64"x40 L=4.4		2	
12	14019004		活动刀(薄料短槽)		Motorial knife		1	
	114119002		活动刀(厚料短槽)		Motorial knife(H)		1	
13	11307001		剪线刀架		Knife bracket		1	
14	113S20001		连杆螺钉SM11/64"x40		Hinge Screw SM11/64"x40		2	
15	114112013		连杆		Connecting rod		1	
16	114S16004		螺母SM11/64"x40		Nut SM11/64"x40		1	
17	14004002		切线曲柄		Crank		1	
18	115022003		驱动曲柄止动块		Crank driver stopper block		1	
19	S05004		螺钉M5 L=14		Screw M5 L=14		1	
20	11327001		弹簧		Spring		1	
21	11230004		14孔接线器		Plug		1	
22	11303003		切线轴套		Thread cutting shaft bushing		1	
23	11503005		驱动曲柄轴衬套		Crank drive shaft bushing		1	
24	113S14020		螺钉SM11/64"x40 L=6		Screw SM11/64"x40 L=6		1	
25	11322002		扭簧端盖		Spring cover		1	
26	11327002		弹簧		Spring		1	
27	11304002		切线凸轮曲柄轴		Crank shaft		1	
28	101S14001		螺钉SM1/4"x40 L=6		Screw SM1/4"x40 L=6		1	
29	116S14005		螺钉SM1/4"x40 L=10		Screw SM1/4"x40 L=10		2	
30	11309030		凸轮顶柱		Push rod		2	
31	11310004		剪线凸轮		Cam		1	
	11310011		剪线凸轮(厚料)		Cam(H)		1	
32	11324001		滚柱		Roolling pin		1	
33	1138NS16001		螺母SM11/64"x40		Nut SM11/64"x40		1	
34	1400400100		剪线驱动组件		Thread trimmer drive asm.		1	
35	14002004		切线驱动轴		Shaft		1	
36	H05013		GB/T896-1986挡圈6		Snap ring 6		1	
37	10112003		针杆曲柄护板		Cunter weight protecting		1	
38	11322003		电磁铁缓冲片		Solenoid cushion rubber		1	
39	11493000500		剪线电磁铁组件		Thread trimmer solenoid asm.		1	
40	113822005		电磁铁橡胶垫		Washer		1	
41	112S16006		螺母SM1/4"X40		Nut SM1/4"X40		1	
42	1401200200		切线电磁铁支架组件		Bracket		1	
43	11309001		切线电磁铁顶销		Solenoid pin		1	
44	W02018		GB/T93-1987弹簧垫圈 4		Washer		2	
45	N01005		螺母 M4		Nut M4		2	
46	S17002		螺钉M6 L=10		Screw M6 L=10		2	
47	14127003		剪线复位簧		Spring		1	
48	14112022		切线杠杆		Tangent lever		1	
49	10112003		针杆曲柄护板		Needle bar crank protecting plate		1	
50	H03015		GB/T894.1 卡簧8		Ring 8		1	
51	11230004		12孔接线器		Plug		1	



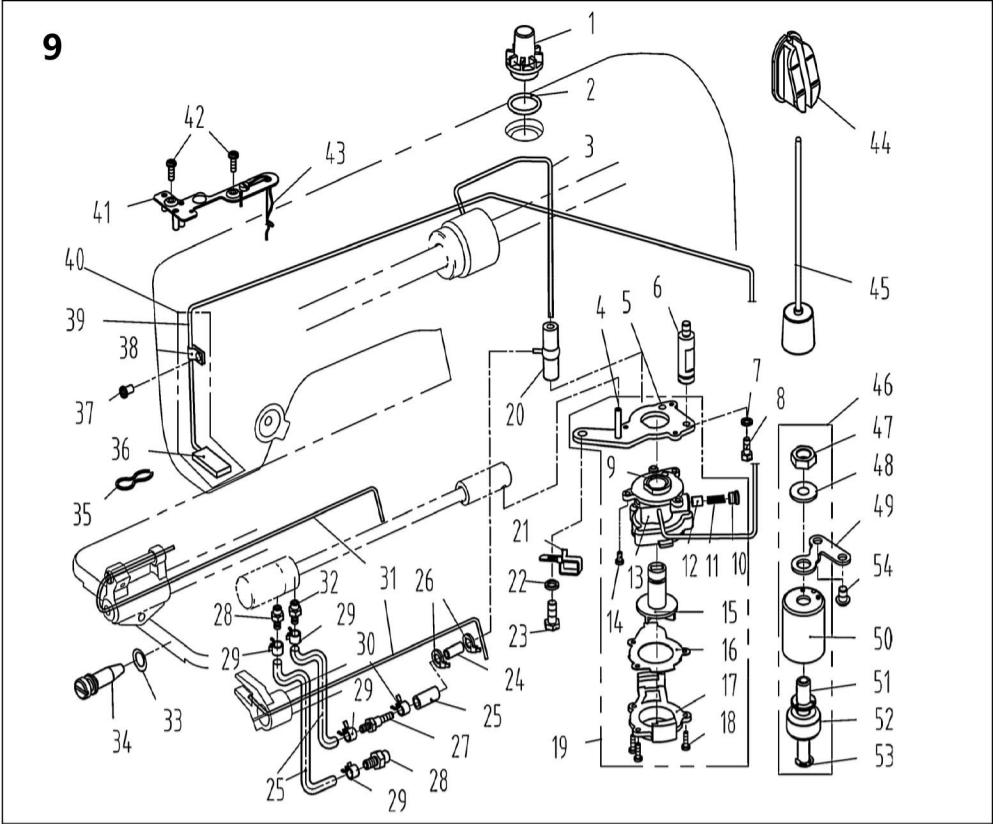
## 7. 绕线部件/ Bobbin Components

序号NO	公司件号	Part NO	名称	PartName	零件描述	Description	数量	Number
1	1413104900		绕线器组件		Bobbin winder asm		1	
2	114511008		螺钉M4 L=6		Screw M4 L=6		1	
3	W02863		GB 93弹簧垫圈4		Washer 4		1	
4	W01142		GB/T 97.1平垫圈4		Washer 4		1	
5	14113002		压线控制板		Pressure line control board		1	
6	14112020		垫圈		Washer		1	
7	13812110		调节板		Regulating plate		1	
8	13827013		满线复位簧		Reset spring		1	
9	1411000300		绕线凸轮组件		Winding cam asm.		1	
10	11329020		开口挡圈5		Ring 5		2	
11	1141NS10001		复合槽盘头螺钉SM9/64"×40		Screw SM9/64"×40		1	
12	W02865		GB 93弹簧垫圈3		Washer 3		1	
13	14111004		绕线轮		Winding wheel		1	
14	O01110		O型圈25x7		O ring 25x7		1	
15	S04090		螺钉M2 L=4		Screw M2 L=4		1	
16	14119003		割线刀		Secant cutter		1	
17	14111002		绕线衬垫		Winding gasket		1	
18	113831002		绕线器装置主座		The main seat		1	
19	10127061		复位板拉簧		Drag spring		2	
20	14127060		弹簧		Spring		1	
21	14102003		绕线器主轴		principal axis		1	
22	1410510600		绕线器连杆组件		Bobbin connecting rod asm		1	
23	14111006		止动轮		Driven wheel		1	
24	N07008		螺母SM9/64"×40		Nut SM9/64"×40		1	
25	S09103		螺钉M4 L=4		Screw M4 L=4		2	
26	11422062		密封垫		Washer		1	
27	114511003		螺钉SM3/16"×28 L=10		Screw SM3/16"×28 L=10		3	
28	S10009		螺钉M6 L=8		Screw M6 L=8		2	
29	11435013		绕线器驱动轮		Driving wheel		1	
30	1411300600		底线夹线器		Bobbin thread tension asm.		1	
31	141S16019		小夹线器螺母		Thread tension nut		1	
32	11427006		小夹线弹簧		Spring		1	
33	14112015		夹线板		Thread tension disk		2	
34	11413022		夹线过线板		Thread tension guide plate		1	
35	112S13004		夹线螺钉		Screw		1	
36	114S16001		螺母SM11/64"×40		Nut SM11/64"×40		1	



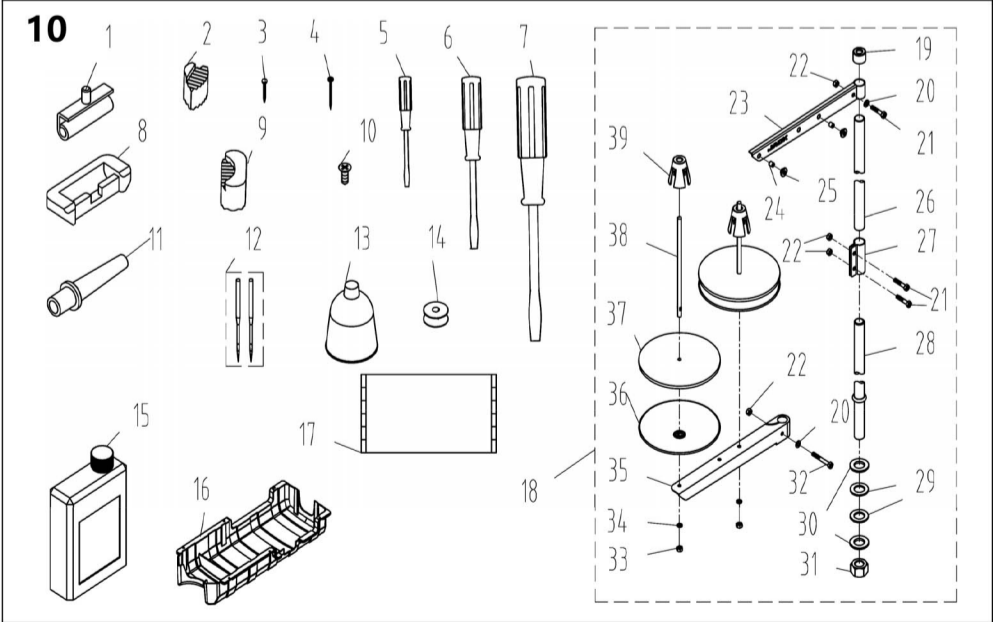
## 8. 油盘、膝抬压脚部件/Oil Ceservoir & Knee Lifter Components

序号NO	公司件号	Part NO	名称	PartName	零件描述	Description	数量	Number
1	114101010		油盘		Oil reservoir		1	
2	14022001		油盘密封垫		Seal		1	
3	H05012		开口挡圈4(日标)		Snap ring 4		1	
4	40128013		垫圈 6.2×13×1		washer 6.2×13×1		2	
5	14327002		顶帽弹簧		Knee lifter push rod Spring		1	
6	11211005		自锁式尼龙扎带		Cable band		1	
7	114111012		顶帽组件		Knee lifter push rod		1	
8	114122009		顶帽防护帽		Knee lifter push rod hat		1	
9	101S11023		螺钉SM3/16"×28 L=6.5		Screw SM3/16"×28 L=6.5		1	
10	10131001		油盘磁铁		Oil reservoir magnet		1	
11	1401202700		抬压脚双向曲柄组件		Lifting foot bidirectional crank asm		1	
12	10112027		抬压脚双向曲柄		Knee lifter crank		1	
13	14027016		双向曲柄扭簧		Knee lifter spring		1	
14	H05010		挡圈9		Snap ring 9		1	
15	1400200100		抬压脚轴组件		Knee lifter shaft		1	
16	S07020		螺钉M6 L=20		Screw M6 L=20		2	
17	101S16004		螺母M6		Nut M6		2	
18	101S12002		螺钉M6 L=24.5		Screw M6 L=24.5		1	
19	S05240		螺钉M6 L=20		Screw M6 L=20		4	
20	20528014		油盘放油垫圈		Ring		1	
21	301S11015		螺钉SM3/8"×28 L=13		Screw SM3/8"×28 L=13		1	
22	113S11004		螺钉M4 L=8		Screw M4 L=8		1	
23	114112021		电线压板		Wire clamp		1	



9. 润滑、油量检测部件/Oil Lubrication & Oil Measuring Components

序号NO	公司件号	Part NO	名称	PartName	零件描述	Description	数量	Number
1	11211004		油窗		Oil sight window		1	
2	10122019		油窗O形圈		Rubber ring		1	
3	14121001		上轴供油管		Main shaft oil tube		1	
4	10121001		下轴供油管		Hook driving shaft oil tube		1	
5	10112020		油泵安装板		Oil pump installing base		1	
6	101S30008		油泵连接螺柱		Oil pump connecting stud		1	
7	W03002		弹垫		Spring washer		1	
8	209S12001		螺钉SM11/64"×40 L=10.5		Screw SM11/64"×40 L=10.5		1	
9	10103022		油泵体衬套		Oil pump bushing		1	
10	101S30007		螺钉M7X0.75 L=5		Screw M7X0.75 L=5		1	
11	10127013		柱塞簧		Plunger spring		1	
12	10122018		回油柱塞		Plunger		1	
13	10120001		油泵体		Oil pump		1	
14	S04093		螺钉M3 L=6		Screw M3 L=6		3	
15	10111003		油泵叶轮		Oil pump impeller		1	
16	10112021		油泵叶轮托板		Oil pump impeller cover		1	
17	10111007		油泵盖		Lubricating oil pump cover		1	
18	101S30006		螺钉ST2.9 L=10		Screw ST2.9 L=10		3	
19	1012000100		油泵组件		Lubricating oil pump component		1	
20	10136001		供油管接头		Rubber joint		1	
21	14112007		过线勾		Thread hook		1	
22	W02004		GB/T93-1987弹垫M6		Spring Washer M6		1	
23	116S30003		螺钉SM15/64"×28 L=14.5		Screw SM15/64"×28 L=14.5		1	
24	14021003		铝油管		Aluminum tubing		1	
25	14021001		PVC油管		Tubing		0.48m	
26	113811004		尼龙扎带		Cable band		2	
27	14036004		油盘油嘴		Oil nozzle		1	
28	14036002		回油嘴		Oil nozzle		2	
29	20429001		油管卡簧		Oil pipe clamp spring		4	
30	30129007		油管卡簧		Oil pipe clamp spring		1	
31	10123010		油线		Oil wick		2	
32	14036003		供油嘴		Oil nozzle		1	
33	14022011		O型圈		Rubber ring		1	
34	140S30001		油量调节螺钉		Oil volume adjusting screw		1	
35	10127015		回油毡夹		Oil felt clamp		1	
36	10123006		回油毡		Oil felt felt		1	
37	101S11004		螺钉SM3/16"×28 L=7		Screw SM3/16"×28 L=7		1	
38	10112023		回油管夹		Oil tube clamp		1	
39	10121008		回油管		Oil return tube		1	
40	10121007		回油管组件		Oil return tube component		1	
41	10112025		油线固定板		Oil wick fixing plate		1	
42	101S11010		螺钉SM9/64"×40 L=11		Screw SM9/64"×40 L=11		2	
43	10123010		油线		Oil wick		1	
44	13811015		油窗		Oil window		1	
45	11412200200		油标组件		Buoy		1	
46	11493000700		油量检测装置组件		Oil measuring device		1	
47	140S16001		螺母		Nut		1	
48	14028001		弹性垫圈		Washer		1	
49	14012006		油量检测装置固定板		Pull spring fixing plate		1	
50	14011004		油量检测罩壳		Shell		1	
51	14002005		导向支柱		Guide pillar		1	
52	11493000700-02		浮子		Float		1	
53	H05040		开口挡圈6		Ring 6		1	
54	101S11026		螺钉SM15/64"×28 L=9		Screw SM15/64"×28 L=9		2	



10. 机头附件/Machine Head Accessories(1)

序号 NO	公司件号	Part NO	名称	PartName	零件描述	Description	数量	Number
1	1011203100		机头连接钩部件		Hinge component		2	
2	14022022		机头座垫		Die cushion		2	
3	101S30010		机头连接钩座钉P19		Nail P19		2	
4	1141NS30001		机头连接钩座钉P25		Nail P25		4	
5	10131004		螺丝刀 (小)		Screw driver,small		1	

## 10. 机头附件/Machine Head Accessories(2)

序号 NO	公司件号	Part NO	名称	PartName	零件描述	Description	数量	Number
6	10131003		螺丝刀 (中)		Screw driver,medium		1	
7	20731047		螺丝刀 (大)		Screw driver,large		1	
8	10122060		机头连接钩座		Head connecting rubber cushion		2	
9	14022023		机头支架		Nose support		2	
10	101530014		螺钉M4 L=20		Wood screw M4 L=20		6	
11	115011003		机头支柱		Machine head rest pin		1	
12	13817001		机针 (定位14#)		Needle		4	
	10117002		机针DP×5#21 (厚料)		Needle(H)		4	
13	20131039		漏斗		Funnel		1	
14	10118003		梭心		Bobbin		2	
15	1381101200		油壶组件		Oiler component		1	
16	115011005		油盘托盘		Disk tray		1	
17	114131001		防尘罩		Dust cover		1	
18	1383100300		线架组件		Thread stand asm.		1	
19	20131019		线架杆顶防护橡皮		Spool rest rod rubber cap		1	
20	W01047		平垫圈5		Washer 5		2	
21	S04050		螺栓M5 L=16		Screw M5 L=16		1	
22	N01034		螺母M5		Nut M5		4	
23	13831022		上线架过线杆		Spool rest arm upper		1	
24	10113011		过线圈 (内)		Thread guide ring		2	
25	10113010		过线圈 (外)		Thread guide ring		2	
26	13831019		线架杆上节		Spool rest rod upper		1	
27	13831021		线架杆接头		Spool rest rod joint		1	
28	13831020		线架杆下节		Spool rest rod lower		1	
29	10122106		橡胶垫圈		Spool rest rod rubber ring		2	
30	W01052		平垫圈16		Washer 16		2	
31	N02004		螺母M16×1.5		Nut M16×1.5		1	
32	S04051		螺栓M5 L=31.5		Screw M5 L=31.5		1	
33	N01034		螺母M5		Nut M5		2	
34	W03002		弹簧垫圈 5		Spring washer 5		2	
35	13831023		下线架过线杆		Spool rest arm lower		1	
36	13831024		线盘		Spool rest		2	
37	20131010		线盘垫		Spool rest cushion		2	
38	20131006		线托棒		Spool pin		2	
39	13831025		线团防松垫		Spool retainer		2	

公司地址(Address of Company) :

中国浙江省台州市椒江区三甲东海大道东段1008号

NO.1008, DONGHAI AVENUE EAST, JIAOJIANG DISTRICT,TAIZHOU CITY, ZHEJIANG

邮编( Zip Code ): 318000

国内销售部(Domestic Trade Department):

电话(TEL): 0086-0576-88177788 88177789

传真(FAX): 0086-0576-88177758

国贸部(International Trade Department):

电话(TEL): 0086-0576-88177782 88177774

传真(FAX): 0086-0576-88177787

服务热线: 400-8876858

http://www.chinajack.com

资料如有更改, 恕不另行通知, 以实物为准。

You will be not informed if the file has been revised.Please set sample as standard.

日期: 2020.12



请您扫下杰克服务号

www.chinajack.com