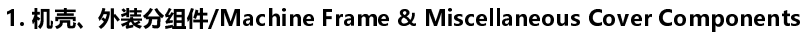


F4 Series

Parts Manual



序号	公司件号	Part NO	名称	PartName	零件描述	Description	数量	Number
1	101S11001		螺钉SM3/16"×28 L=9		Screw SM3/16"×28 L=9		3	
2	10122003		面板调节孔螺塞		Rubber plug		2	
3	13837002		防跳牌		Head card		1	
4	110212002		面板		Face plate		1	
5	13813005		左线钩		Thread guide left		1	
6	101S11007		螺钉SM11/64"×40 L=6		Screw SM11/64"×40 L=6		1	
7	115022005		面板垫		Face plate gasket		1	
8	101S11027		螺钉SM1/8"×44 L=34		Screw SM1/8"×44 L=34		1	
9	11412082		面部防油板		Face oil shield asm		1	
10	10123002		针杆上毡圈		Rubber plug		1	
11	10122013		针杆上衬套孔塞		Rubber plug		1	
12	10122005		排线连杆销螺孔塞		Rubber plug		1	
13	10122004		针杆曲柄螺孔塞		Rubber plug		1	
14	101S11004		螺钉SM3/16"×28 L=7		Screw SM3/16"×28 L=7		1	
15	13812019		排线钩的挡罩		Thread take-up lever cover		1	
16	101S11004		螺钉SM3/16"×28 L=7		Screw SM3/16"×28 L=7		1	
17	13512004		三线线钩		3-hole thread guide		1	
18	10122005		排线连杆销螺孔塞		Rubber plug		1	
19	114S11015		螺钉SM9/64"×40 L=6		Screw SM9/64"×40 L=6		2	
20	11419001		割线刀		Knife		1	
21	20722002		油圈		Rubber plug		1	
22	115022004		后盖板垫		Side plate gasket		1	
23	110212003		后盖板		Side plate		1	
24	101S11001		螺钉SM3/16"×28 L=9		Screw SM3/16"×28 L=9		11	
25	114S30001		螺栓MS L=25		Screw MS L=25		3	
26	114S13001		螺栓MS L=20		Screw MS L=20		1	
27	W01009		垫圈 5		Washer 5		4	
28	11013304400		平缝一体机控制器		Electronic control box		1	
29	10122006		送料调节器孔塞		Rubber plug		1	
30	10122007		下轴工艺孔塞		Rubber plug		1	
31	101S12001		底板支柱		Machine head stud Electronic		4	
32	206S11002		螺钉SM9/64"×40 L=10		Screw SM9/64"×40 L=10		1	
33	W06001		双面齿毡圈		Washer		1	
34	10113041		二线线钩		2-hole thread guide		1	
35	101S11007		螺钉SM11/64"×40 L=6		Screw SM11/64"×40 L=6		1	
36	10113004		右线钩		Thread guide right		1	
37	101S15010		螺钉SM15/64"×28 L=10.5		Screw SM15/64"×28 L=10.5		1	
38	10122014		排线簧调节座O型圈		Rubber ring		1	
39	10103011		排线簧调节座		Thread tension on base		1	
40	10112005		夹线板		Thread tension on disk		2	
41	10112006		松线板		Disk stopper		1	
42	101S30002		夹线螺钉		Thread tension post		1	
43	10127002		夹线弹簧		Thread tension on spring		1	
44	11427050		夹线弹簧 (厚料)		Thread tension on spring (H)		1	
45	10112007		夹线制动板		Thread disk rotating stopper		1	
46	138S16013		夹线螺母		Thread tension on nut		1	
47	10126030		松线钩		Tension on release pin		1	
48	10127001		排线簧		Thread take-up spring		1	
49	10127031		排线簧 (厚料)		Thread take-up spring (H)		1	
48	101S15005		螺钉SM9/64"×40 L=5.5		Screw SM9/64"×40 L=5.5		1	
49	1381300500		夹线器组件		Thread tension asm		1	
50	1381300700		夹线器组件 (厚料)		Thread tension on asm (H)		1	
51	11413011		固定式线线钩		Thread guide		1	
50	401S16001		螺母SM9/64"×40		Nut SM9/64"×40		1	
52	101S11002		螺钉SM11/64"×40 L=5.5		Screw SM11/64"×40 L=5.5		1	
53	13812111		卷边滚座		Roller stop steel		1	
54	101S17002		螺钉SM11/64"×40 L=5		Screw SM11/64"×40 L=5		2	
55	11414006		针板		Needle plate		1	
56	10815001		针板 (-7)		Needle plate (-7)		1	
	11315001		针板 (厚料)		Needle plate (H)		1	
	13615003		针板 (HL-7)		Needle plate (HL-7)		1	
	10115002		拆板		Slide plate		1	
57	10127009		拆板簧		Slide plate spring		1	
58	101S11019		螺钉SM3/32"×56 L=2		Screw SM3/32"×56 L=2		2	
59	101S11001		螺钉SM3/16"×28 L=9		Screw SM3/16"×28 L=9		1	
60	11023000900		LED开关灯组件		Auto reverse feed switch asm		1	



序号	公司件号	Part NO	名称	PartName	零件描述	Description	数量	Number
1	10126001		跳线连杆销 (厚料)		Thread take-up connecting rod pin (H)		1	
	11326013		跳线连杆销		Thread take-up connecting rod pin (H)		1	
	11326010		跳线连杆销 (-7)		Thread take-up connecting rod pin (-7)		1	
2	101515001		螺钉SM15/64"x28 L=15		Screw SM15/64"x28 L=15		1	
3	10105001		跳线连杆 (厚料)		Thread take-up connecting rod (H)		1	
	11305010		跳线连杆		Thread take-up connecting rod		1	
4	H05013		挡圈6		Snap ring 6		1	
5	11328010		垫片		Washer		1	
6	10112003		针杆曲柄护板		Needle bar crank protecting plate		1	
7	1133800100		跳线杆组件		Thread take-up lever asm		1	
	1133800200		跳线杆组件 (厚料, -7)		Thread take-up lever asm (H & -7)		1	
8	10124001		跳线杆滚针轴承		Needle bearing		1	
	11310012		跳线曲柄分部件		Thread take-up crank		1	
9	1011000400		跳线曲柄分部件 (厚料)		Thread take-up crank (H)		1	
	11310010		跳线曲柄分部件 (-7)		Thread take-up crank (-7)		1	
10	10105002		针杆连杆		Needle bar connecting rod		1	
11	101517001		螺钉SM9/64"x40 (左旋) L=4.8		Screw SM9/64"x40 (left hand) L=4.8		1	
12	101515004		螺钉SM9/32"x28 L=16		Screw SM9/32"x28 L=16		1	
13	101511003		螺钉SM9/32"x28 L=16		Screw SM9/32"x28 L=16		1	
14	10404001		针杆曲柄		Needle bar crank		1	
	11404035		针杆曲柄 (厚料, -7)		Needle bar crank (H & -7)		1	
15	101515002		螺钉SM1/4"x40 L=6		Screw SM1/4"x40 L=6		2	
16	101300400		上轴后轴套组件		Main shaft bushing front		1	
	101515006		螺钉SM15/64"x28 L=7		Screw SM15/64"x28 L=7		1	
18	12203001		主轴后轴套		Main shaft bushing mid		1	
19	101514001		螺钉SM1/4"x40 L=6		Screw SM1/4"x40 L=6		2	
20	10108001		上轴衬圈		Main shaft thrust collar		1	
21	H03002		挡圈20		Snap ring 20		1	
	11310014		送料偏心轮 (厚料)		Feed eccentric cam (H)		1	
22	400006		送料偏心轮		Feed eccentric cam		1	
	10112017		送料偏心轮盖板		Cover plate		1	
24	101511013		螺钉SM1/4"x40 L=13		Screw SM1/4"x40 L=13		2	
25	113511003		螺钉SM9/64"x40 L=5		Screw SM9/64"x40 L=5		2	
26	10103026		上轴后轴套		Main shaft bushing rear		1	
27	10121205		上轴后密封油封		Oil seal		1	
28	H03001		挡圈15		Snap ring 15		1	
29	10102026		上轴		Main shaft		1	
30	303560		手轮		Handwheel		1	
31	10133045		平缝一体机电机		Motor		1	
32	W03002		弹簧5		Spring washer 5		3	
33	114513001		螺钉M5 L=20		Screw M5 L=20		3	
34	S05218		螺钉M5 L=22		Screw M5 L=22		1	
35	W03002		弹簧5		Spring washer 5		1	
36	10122012		上轴孔塞		Rubber plug		1	
37	1013800300		跳线杆大组件 (HL专用)		Thread take-up lever asm (HL)		1	
38	1011001100		拾牙凸轮组件 (HL专用)		Cam (HL)		1	
39	1011001200		送料凸轮组件 (HL专用)		Cam (HL)		1	
40	135515007		螺钉SM11/64"x40 (HL专用)		Screw SM11/64"x40 (HL)		6	
41	13528002		凸轮隔筒片 (HL专用)		Cam plate (HL)		1	



序号 NO	公司件号	Part NO	名称	PartName	零件描述	Description	数量	Number
1	101S11010		螺钉SM9/64"x40 L=11		Screw SM9/64"x40 L=11		1	
2	10128002		压脚扳手螺钉垫圈		Washer		1	
3	13811029		压脚扳手		Hand lifter		1	
4	001004		O形圈		Rubber ring		1	
5	1011000200		压脚扳手凸轮分部件		Hand lifter cam asm.		1	
6	101S20001		前杠杆螺栓销		Screw		2	
7	10128015		螺栓垫圈橡胶垫圈		Washer		2	
8	1011200100		压脚前杠杆分部件		Lift front lever component		1	
9	10112013		抬压脚拉杆		Knee lifter pull rod		1	
10	H05003		挡圈5		Snap ring 5		2	
11	10112010		抬压脚盖板		Lifting plate		1	
12	101S20004		螺钉SM3/16"x32		Hinge Screw SM3/16"x32		1	
14	101S20003		螺钉SM15/64"x28		Hinge screw SM15/64"x28		1	
15	10112014		压脚前后杠杆		Knee lifter back lever		1	
16	10112015		抬压脚顶杆		Knee lifter connecting rod		1	
17	1011200200		压脚前杠杆杆组件		Knee lifter lever asm		1	
18	11381101800		调压螺钉组件		Presser regulating screw nut asm		1	
19	1138NS30003		调压螺钉 (厚料)		Press regulating screw (H)		1	
20	1138NS16005		调压螺母 (厚料)		Press regulating nut (H)		1	
21	10102003		调压导杆		Press regulating guide bar		1	
22	113827010		调压簧		Press regulating spring		1	
23	10127024		调压簧 (厚料)		Press regulating spring (H)		1	
24	13809030		压杆导架		Presser bar guide bracket		1	
25	101S15007		螺钉SM1/4"x40 L=8		Screw SM1/4"x40 L=8		1	
26	10122112		压杆防油套		Pressure bar oil cover		1	
27	10103012		压杆衬套		Presser bar bushing		1	
28	10102004		压杆		Presser bar		1	
28	101S11009		螺钉SM9/64"x40 L=10.5		Screw SM9/64"x40 L=10.5		1	
	1131600600		压脚组件		Presser foot asm		1	
29	1131600100		压脚组件 (厚料)		Presser foot asm (H)		1	
	1131600300		压脚组件 (HL)		Presser foot asm (HL)		1	
30	11329020		挡圈 5		Snap ring 5		5	
31	101S20002		松线顶板螺栓销		Wire release plate pin		1	
32	10128015		螺栓垫圈橡胶垫圈		Washer		1	
33	10112012		松线顶板		Wire release plate asm		1	
34	10126003		松线轴销钉		Thread release supporting pin		1	
35	H05012		松线轴销钉挡圈		Snap ring		1	
36	10128001		松线轴销钉垫片		Washer plate		1	
37	10127003		松线轴销钉弹簧		Spring		1	
38	H05003		挡圈5		Snap ring 5		2	
39	10127008		松线顶板复位簧		Spring		1	
40	1011900100		割线刀组件		Knife		1	

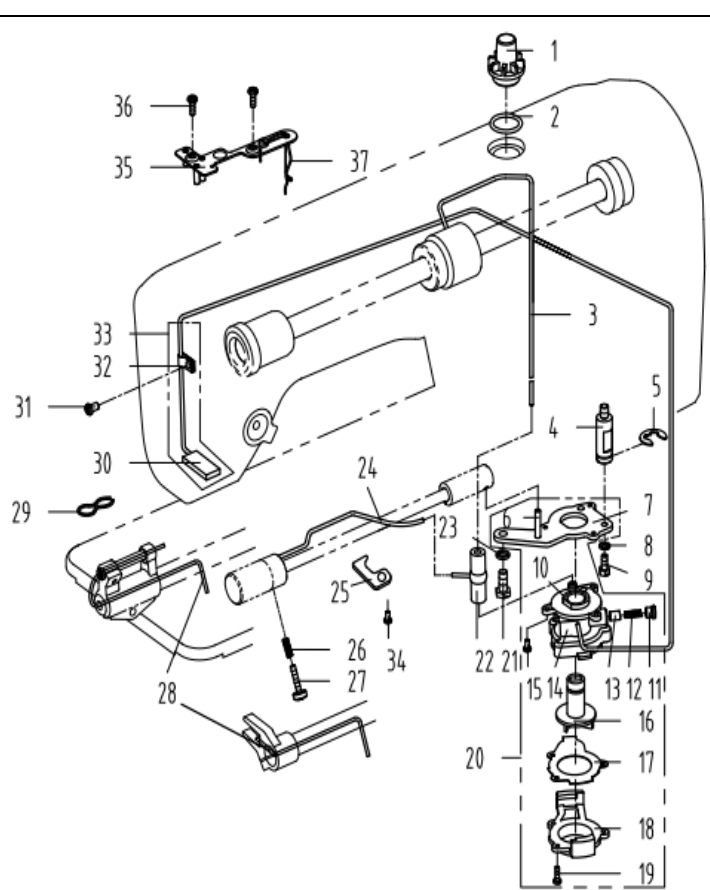
3. 针杆、竖轴、下轴部件/Needle bar & Upright Shaft & Hook Driving Shaft Components

序号 NO	公司件号 Part NO	名称 PartName	零件描述 Description	数量	Number
1	10103009	针杆上衬套	Needle bar bushing upper	1	
2	10102002	针杆	Needle bar	1	
3	10102021	针杆 (厚料)	Needle bar (H)	1	
4	10138002	针杆连接柱	Needle bar connecting rod	1	
3	13505003	针杆连接柱 (HL)	Needle bar connecting rod (HL)	1	
4	101511005	螺钉 SM9/64"x40 L=6	Screw SM9/64"x40 L=6	1	
5	10103010	针杆下衬套	Needle bar bushing lower	1	
5	10103023	针杆下衬套 (厚料、-7)	Needle bar bushing lower (H & -7)	1	
6	10113002	针杆线勾	Needle bar thread guide	1	
6	11412063	针杆线勾 (厚料)	Needle bar thread guide (H)	1	
7	10117001	切针DP=11F14	Needle DP=11F14	1	
7	10117002	切针DP=5P21 (厚料)	Needle DP=5P21 (H)	1	
8	10413001	针杆下衬套线勾	Lower bushing thread guide	1	
9	10113009	针杆下轴套线勾 (厚料、-7)	Lower bushing thread guide (H & -7)	1	
9	101511006	螺钉 SM11/8"x44 L=4.5	Screw SM11/8"x44 L=4.5	1	
10	10109001	针杆连接柱滑块	Slide block	1	
11	101511008	螺钉 SM11/64"x40 L=8	Screw SM11/64"x40 L=8	2	
12	10109002	针杆接头滑块导轨	Needle bar guide	1	
13	10425004	上轴全齿轮	Upper shaft bevel gear	1	
14	10425003	驱动上全齿轮	Upper small bevel gear asm	1	
15	10425002	驱动下全齿轮	lower large bevel gear asm	1	
16	101515007	螺钉 SM1/4"x40 L=7	Screw SM1/4"x40 L=7	2	
17	10425001	下轴全齿轮	Hook drive shaft bevel gear	1	
18	101515007	螺钉 SM1/4"x40 L=7	Screw SM1/4"x40 L=7	2	
19	101515007	螺钉 SM1/4"x40 L=7	Screw SM1/4"x40 L=7	2	
20	101515007	螺钉 SM1/4"x40 L=7	Screw SM1/4"x40 L=7	2	
21	101515006	螺钉 SM15/64"x28 L=4.7	Screw SM15/64"x28 L=4.7	1	
22	10403014	驱动上轴套	Upright shaft bushing upper	1	
23	10102007	驱动下轴套	Upright shaft	1	
24	10403013	驱动下轴套	Upright shaft bushing lower	1	
25	10103079	下轴后轴套	Hook driving shaft bushing back	1	
26	10108002	下轴挡圈	Hook driving shaft snap ring	1	
27	10122015	下轴挡封	Thrust collar	1	
28	10120206	下轴	Hook driving shaft	1	
28	12202003	下轴 (HL)	Hook driving shaft (HL)	1	
29	10103078	下轴前轴套	Hook driving shaft bushing front	1	
30	10123009	下轴脂油芯	Oil wick	1	
31	101530005	下轴脂油螺钉SM3/16"x32	set screw SM3/16"x32	1	
31	10118006	旋梭	Hook asm	1	
32	10118007	旋梭 (厚料)	Hook asm (H)	1	
32	10818001	旋梭 (HL)	Hook asm (HL)	1	
33	10118003	旋梭	Bobbin	1	
33	10818501	大梭心 (HL)	Bobbin (HL)	1	
34	10118021	旋梭壳	Bobbin case asm	1	
34	10818502	旋梭壳 (HL)	Bobbin case asm (HL)	1	
35	10112016	旋梭定位钩	Finger postoner	1	
35	10112032	旋梭定位钩 (厚料)	Finger postoner (H)	1	
36	101511011	螺钉 SM11/64"x40 L=13	Screw SM11/64"x40 L=13	1	
37	101511012	螺钉 SM11/64"x40 L=4.8	Screw SM11/64"x40 L=4.8	2	
38	101515006	螺钉 SM11/64"x40 L=7	Screw SM11/64"x40 L=7	1	



序号	公司件号	Part NO	名称	PartName	零件描述	Description	数量	Number
1	10105007		倒送料连杆		Reverse feed connecting rod		1	
2	11426021		倒送料连杆销		Connecting rod pin		1	
3	11326011		倒送料连杆销 (-7)		Connecting rod pin (-7)		1	
4	101511005		螺钉SM9/64"x40 L=6		Screw SM9/64"x40 L=6		6	
4	10101053		送料调节器		Feed regulator		1	
5	10403017		送料调节器轴套		Feed regulator bushing		1	
6	101511023		螺钉SM3/16"x28 L=6.5		Screw SM3/16"x28 L=6.5		1	
7	10126045		标盘螺栓		Feed regulator stud		1	
8	10122016		送料销钉螺栓O形圈		Rubber ring		1	
9	1011107000		标盘按钮组件		Knob component		1	
9	1011107100		标盘按钮组件 (-7)		Knob component (-7)		1	
10	101511022		螺钉SM3/16"x28 L=18		Screw SM3/16"x28 L=18		1	
11	10126011		送料曲柄销		Feed rocker crank pin		1	
12	101520005		螺钉SM9/32"x28 L=13.5		Screw SM9/32"x28 L=13.5		1	
	10104002		送料曲柄		Feed rocker shaft crank		1	
13	11304010		送料曲柄 (-7)		Feed rocker shaft crank (-7)		1	
	10104009		送料曲柄 (HL)		Feed rocker shaft crank (HL)		1	
14	101511016		螺钉SM3/16"x28 L=14		Screw SM3/16"x28 L=14		1	
15	400093		拍牙连杆		Connecting rod		1	
16	101511016		螺钉SM3/16"x28 L=14		Screw SM3/16"x28 L=14		1	
17	10104004		拍牙后曲柄		Feed driving shaft crank		1	
	400091		送料连杆		Rocker shaft connecting rod		1	
18	400083		送料连杆 (-7)		Rocker shaft connecting rod (-7)		1	
	10105052		送料连杆 (HL)		Rocker shaft connecting rod (HL)		1	
19	10126006		送料连杆销		Connecting rod pin		1	
20	101516003		螺母SM9/32"x28 L=4		Hinge Screw SM9/32"x28 L=4		1	
21	10102008		送料轴销		Feed rocker shaft		1	
22	11202001		拍牙轴		Feed driving shaft		1	
23	101515006		螺钉SM15/64"x28 L=7		Screw SM15/64"x28 L=7		1	
24	101515013		螺钉SM15/64"x28 L=10		ScrewSM15/64"x28 L=10		1	
25	10131086		倒喂扳手		Reverse feed lever		1	
26	10103024		倒送料轴轴套		Reverse feed shaft bushing back		1	
27	10102023		倒喂送料轴		Reverse feed shaft		1	
28	10122017		倒送料轴O形圈		Rubber ring		1	
29	10108003		送料轴挡圈		Feed rocker shaft snap ring		4	
30	101515002		螺钉SM1/4"x40 L=6		Screw SM1/4"x40 L=6		2	
31	10403015		轴套		Bushing		1	
32	H03001		挡圈15		Snap ring 15		2	
33	10108003		送料轴挡圈		Feed rocker shaft snap ring		1	
34	101515002		螺钉SM1/4"x40 L=6		Screw SM1/4"x40 L=6		2	
35	10403015		轴套		Bushing		1	
36	H03001		挡圈15		Snap ring 15		1	
37	10104007		拍牙叉形曲柄		Driving shaft crank		1	
	10804003		拍牙叉形曲柄 (厚料、-7)		Driving shaft crank (H & -7)		1	
38	116511005		螺钉SM11/64"x40 L=13		Screw SM11/64"x40 L=13		1	
38	101511020		螺钉SM11/64"x40 L=10.5 (厚料、-7)		Screw SM11/64"x40 L=10.5 (H & -7)		1	
	11414002		送料牙		Feed dog		1	
39	11314001		送料牙 (厚料、-H-7)		Feed dog (H & -H-7)		1	
	10814001		送料牙 (-7)		Feed dog (-7)		1	
	10114051		送料牙 (HL)		Feed dog (HL)		1	
40	470060		牙架		Feed bar asm		1	
41	101511016		螺钉SM3/16"x28 L=14		Screw SM3/16"x28 L=14		1	
42	10128003		牙架座螺钉垫圈		Washer		1	
43	101511025		螺钉SM11/64"x40 L=7		Screw SM11/64"x40 L=7		1	
44	10401007		牙架销		Feed bar pin		1	
45	480095		牙架座		Feed bar bed		1	
46	11300700300		牙架组件 (成品)		Feed bar asm		1	
47	101511018		螺钉SM1/8"x44 L=6		Screw SM1/8"x44 L=6		2	
48	101515010		螺钉SM15/64"x28 L=10.5		Screw SM15/64"x28 L=10.5		1	
49	10126009		送料拨动底座在销		Left pin		1	
50	10126007		短送料拨齿杆		Connecting pin		1	
51	10109005		送料短拨板		Feed short shaking plate		1	
52	10109004		送料长拨板		Feed long shaking plate		1	
53	10126007		短送料拨齿杆		Connecting pin		1	
54	1010100200		送料拨动底座部件		Feed shaking plate bed components		1	
55	10126010		送料拨动底座右销		Right pin		1	
56	101515010		螺钉SM15/64"x28 L=10.5		Screw SM15/64"x28 L=10.5		1	
57	11427011		送料调节弹簧		Spring		1	
58	11329020		挡圈5		Snap ring 5		1	
59	11412081		拉簧固定板		Pull spring fixing plate		1	
60	10127011		倒送料拉簧		Reverse feed pull spring		1	
61	1140402700		倒送料曲柄组件		Feed reverse crank asm		1	
	1130402800		倒送料曲柄组件 (-7)		Feed reverse crank asm (-7)		1	
62	13212005		油喉		Tube		1	
63	114530007		螺钉SM11/64"x40 L=7.5		Screw SM11/64"x40 L=7.5		1	
64	114516004		螺母SM11/64"x40 L=3		Nut SM11/64"x40 L=3		1	
65	501102		螺钉SM3/16"x28 L=18		Screw SM3/16"x28 L=18		1	
66	11329020		挡圈5		Snap ring 5		1	
67	10126015		送料距轴合销		Pin		1	
68	10127010		送料距轴合簧		Spring		1	

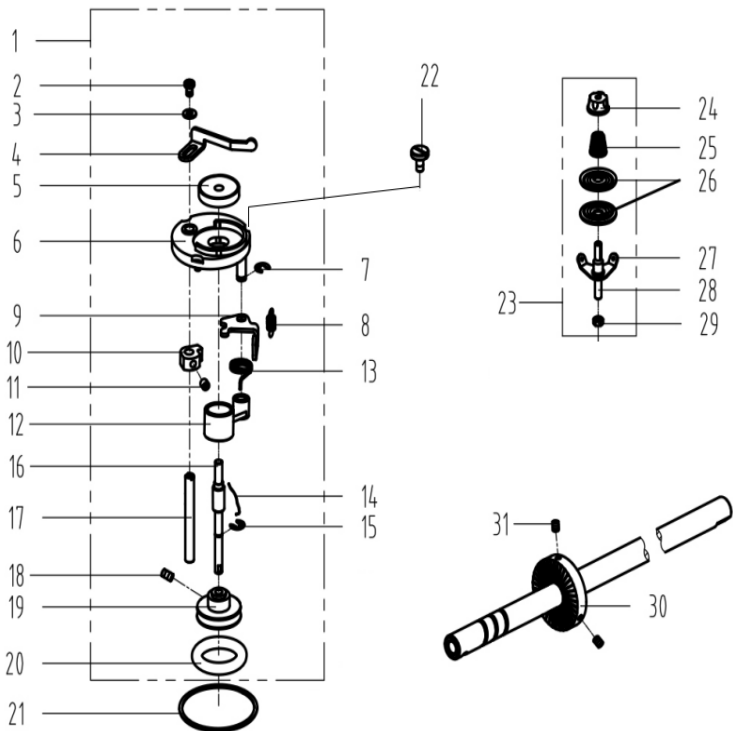
6



6. 润滑、油量检测组件/Oil Lubrication & Oil Measuring Components

序号 NO	公司件号	Part NO	名称	PartName	零件描述	Description	数量	Number
1	11211004		油窗		Oil sight window		1	
2	10122019		油窗O形圈		Rubber ring		1	
3	11421008		上轴供油管		Main shaft oil tube		1	
4	101530008		油泵连接螺栓		Oil pump connecting stud		1	
5	11329010		开口挡圈10		Snap ring 10		1	
6	10121001		下轴供油管		Hook driving shaft oil tube		1	
7	10112020		油泵安装板		Oil pump installing base		1	
8	W03002		弹垫		Spring washer		1	
9	101511011		螺钉SM11/64\"		Screw SM11/64\"		1	
10	10103022		油泵体衬套		Oil pump bushing		1	
11	101530007		柱塞螺钉		Plunger Screw		1	
12	10127013		柱塞簧		Plunger spring		1	
13	10122018		回油柱塞		Plunger		1	
14	10120001		油泵体		Oil pump		1	
15	S04093		螺钉M3 L=6		Screw M3 L=6		3	
16	10111003		油泵叶轮		Oil pump impeller		1	
17	10112021		油泵叶轮托板		Oil pump impeller cover		1	
18	10111007		油泵盖		Lubricating oil pump cover		1	
19	101530006		螺钉ST2.9 L=10		Screw ST2.9 L=10		3	
20	1012000100		油泵分部件		Lubricating oil pump component		1	
21	101511026		螺钉SM15/64\"		Screw SM15/64\"		1	
22	10136001		快油管接头		Rubber joint		1	
23	W02004		弹垫M6		Spring Washer M6		1	
24	10121009		快油管		Hook oil tube		1	
25	10112022		管座供油管压板		Tube holder		1	
26	10127014		油量调节螺钉弹簧		Spring		1	
27	101530009		油量调节螺钉		Oil volume adjusting screw		1	
28	10423005		油线		Oil wick		1	
29	10127015		回油毡夹		Oil felt clamp		1	
30	10123006		回油毡		Oil felt felt		1	
31	101511004		螺钉SM3/16\"		Screw SM3/16\"		1	
32	10127015		回油毡夹		Oil tube clamp		1	
33	11502100100		回油管部件		Oil return tube component		1	
34	101511026		螺钉SM15/64\"		Screw SM15/64\"		1	
35	10112025		油线固定板		Oil wick fixing plate		1	
36	101511010		螺钉SM9/64\"		Screw SM9/64\"		2	
37	10123010		油线		Oil wick		1	

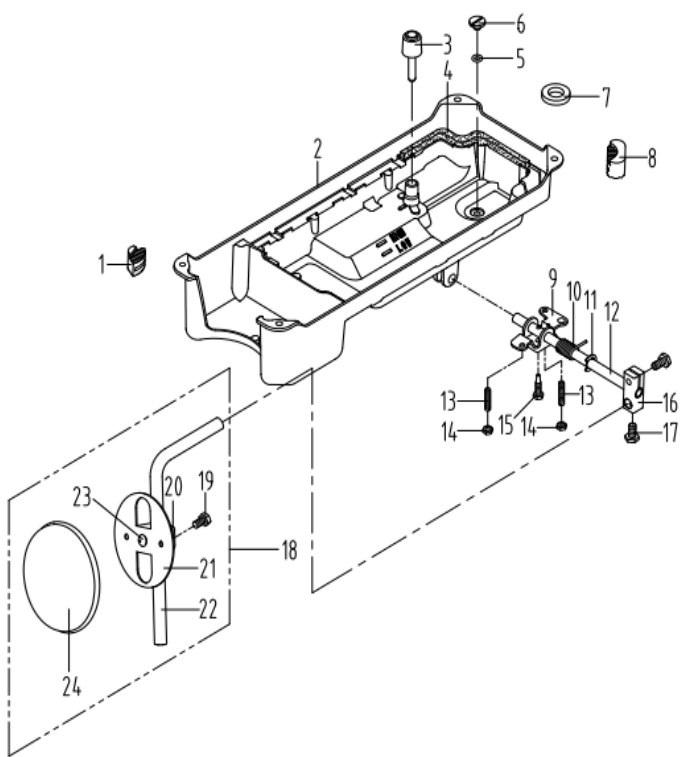
7



7. 绕线器组件/ Bobbin Components

序号 NO	公司件号	Part NO	名称	PartName	零件描述	Description	数量	Number
1	1383103900		绕线器组件		Bobbin winder asm		1	
2	114511008		螺钉M4 L=6		Screw M4 L=6		1	
3	W01142		垫圈4		Washer 4		1	
4	10113030		压线控制板		Thread press control plate		1	
5	10111120		绕线衬垫		Winding pad		1	
6	13831101		绕线器装置主座		Bobbin winder bed		1	
7	H05006		开口挡圈5		Snap ring		1	
8	10127061		复位板拉簧		Spring		1	
9	13812110		调节板		Regulating plate		1	
10	10110030		绕线凸轮		Bobbin winder cam		1	
11	S09045		螺钉M5 L=5		Screw M5 L=5		1	
12	1380510600		绕线器连杆组件		Bobbin winder connecting rod		1	
13	13827103		弹簧复位位置		Spring		1	
14	10127060		弹簧		Spring		1	
15	H05909		开口挡圈4		Snap ring 4		1	
16	13802111		绕线器主轴		Bobbin winder main shaft		1	
17	13802026		绕线凸轮轴		Bobbin winder cam shaft		1	
18	S09103		螺钉M4 L=4		Screw M4 L=4		2	
19	13831102		绕线轮		Bobbin winder wheel		1	
20	Q01110		O型圈		Ring		1	
21	11422062		密封垫		Washer		1	
22	114511003		螺钉SM3/16\"		Screw SM3/16\"		3	
23	1381300600		底线夹线器		Bobbin thread tension asm		1	
24	138516019		夹线螺母		Thread tension nut		1	
25	11427006		小夹线弹簧		Spring		1	
26	10112005		夹线板		Thread tension disk		2	
27	11413022		夹线过线板		Thread tension guide plate		1	
28	112513004		夹线螺钉		Screw		1	
29	114516001		螺母SM11/64\"		Nut SM11/64\"		1	
30	11435013		绕线器驱动轮		Driving wheel		1	
31	S10009		螺钉M6 L=8		Screw M6 L=8		2	

8



8. 油盘、膝抬压脚分组件/Oil Ceservoir & Knee Lifter Components

序号 NO	公司件号	Part NO	名称	PartName	零件描述	Description	数量	Number
1	10122022		油盘座垫		Oil reservoir rubber cushion		2	
2	13801020		油盘		Oil reservoir		1	
3	10111005		抬压脚顶杆		Knee lifter push rod		1	
4	10122020		油盘垫		Oil Reservoir gasket		1	
5	10122021		O形圈		Rubber ring		1	
6	101511028		螺钉SM5/16\"		Screw SM5/16\"		1	
7	10131001		油盘磁铁		Oil reservoir magnet		1	
8	10122023		油盘支架		Oil reservoir rubber cushion		2	
9	10112027		抬压脚双向曲柄		Knee lifter crank		1	
10	10127016		双向曲柄扭簧		Knee lifter spring		1	
11	H05010		挡圈10		Snap ring 10		1	
12	10102011		抬压脚轴		Knee lifter shaft		1	
13	101515012		螺钉M6 L=30		Screw M6 L=30		2	
14	101516004		螺母M6 L=4		Nut M6 L=4		2	
15	101512002		螺钉M6 L=26		Screw M6 L=26		1	
16	10101008		抬压脚操纵杆书头		Bearing bracket		1	
17	101512003		螺钉M8 L=16		Screw M8 L=16		1	
18	1011202800		操纵杆组件		Knee press plate asm		1	
19	101512004		螺钉M6 L=11		Screw M6 L=11		1	
20	10112030		操纵杆书头		Knee press plate holder		1	
21	10112029		操纵板		Knee press plate		1	
22	10112028		操纵杆		Knee press plate rod		1	
23	10122025		操纵杆垫		Rubber		1	
24	10122024		操纵板软垫		Knee press plate cover		1	

9 (1)

