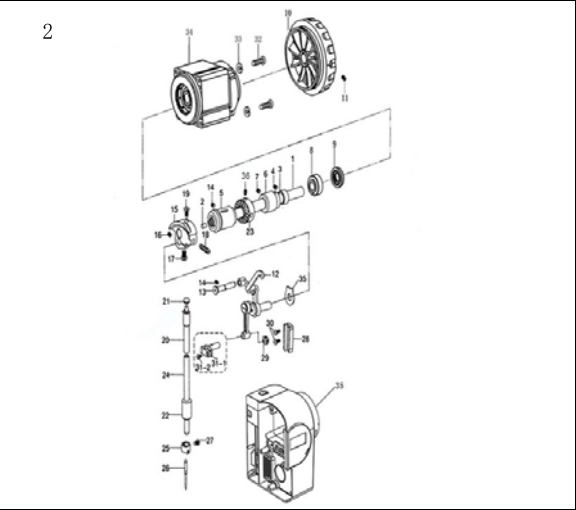


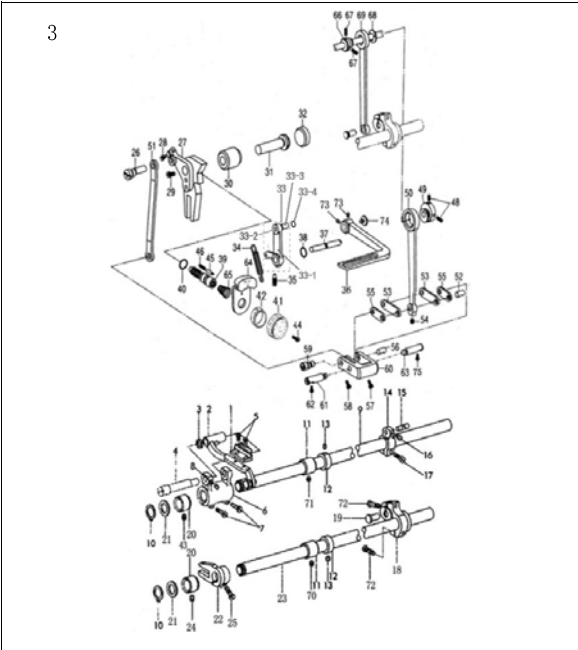
1. 机壳、外装分组件/Machine frame & miscellaneous cover components

| 序号NO. | 公司件号 Part NO. | 名称 PartName | 零件描述 Description | 数量 Number |
|-------|------------------|-----------------|----------------------------|-----------|
| 1 | 14701003 | 面板 | Face plate arm | 1 |
| 2 | 201511025 | 面板螺钉 | Screw | 3 |
| 3 | 14713003 | 面板线勾 | Arm thread guide | 1 |
| 4 | 10113004 | 右线勾 | Arm thread guide | 1 |
| 5 | 101511007 | 线勾螺钉 | Screw | 3 |
| 6 | 1381300400 | 小夹线组件 | BOBBIN THREAD TENSIONASM | 1 |
| 6-1 | 138120066 | 过线板 | Thread tension guide plate | 1 |
| 6-2 | 13810008 | 小夹线轴螺母 | Thread tension nut | 1 |
| 6-3 | 11212004 | 小夹线板 | Thread tension disk | 2 |
| 6-4 | 11227001 | 小夹线弹簧 | Thread tension spring | 1 |
| 6-5 | 138516019 | 小夹线器螺母 | Thread tension nut | 1 |
| 7 | 113514002 | 小夹线固定螺钉 | SCREW | 1 |
| 8 | 13513010 | 下勾线 | FRAME THERAD GUIDE | 1 |
| 9 | 1351300300 | 夹线组件 | Thread tension asm | 1 |
| 9-1 | 135530002 | 夹线螺钉 | Thread tension post | 1 |
| 9-2 | 138316013 | 夹线螺母 | Tension nut | 1 |
| 9-3 | 14227024 | 夹线弹簧 | Thread tension spring | 1 |
| 9-4 | 13513004 | 松线板 | Disk stopper | 1 |
| 9-5 | 13513005 | 夹线板 | Thread tension disk | 2 |
| 9-6 | 10127001 | 挑线簧 | Takeup spring | 1 |
| 9-7 | 13513006 | 夹线调节座 | Thread tension post base | 1 |
| 9-8 | 101515005 | 夹线调节座螺钉 | Screw | 1 |
| 9-10 | 13513008 | 夹线螺母止动板 | Tension disc stopper | 1 |
| 9-11 | 001050 | O型圈 | Ring14.5x1.5 | 1 |
| 10 | 136514002 | 夹线调节固定螺钉 | Screw | 1 |
| 11 | 14712018 | 挑线杆防护罩 | Thread take-up lever cover | 1 |
| 12 | 101511004 | 挑线杆防护螺钉 | Screw | 1 |
| 15 | 13513007 | 松线钉 | Thread release pin | 1 |
| 17 | 13522001 | 橡皮塞(Φ19) | Rubber plugΦ19 | 1 |
| 18 | 13812019 | 卷边器座 | Roller stop seat | 1 |
| 19 | 401516001 | 螺钉 | Screw | 2 |
| 20 | 135220001 | 底板螺钉(尾部) | Bed screw stud(tail) | 2 |
| 21 | 002004 | 弹簧垫圈 | Spring washer | 4 |
| 24-1 | 13515002 | 推板 | Slide plate | 1 |
| 24-2 | 13512007 | 推板簧 | Slide plate spring | 1 |
| 24-3 | 101511019 | 推板螺钉 | Screw | 2 |
| 25 | 13515001 | 针板 | Throat plate | 1 |
| 26 | 101517002 | 针板螺钉 | Screw | 2 |
| 27 | 1473100100 | 绕线器组件 | Bobbin winder unit | 1 |
| 28 | 114311003 | 螺钉 3/16-28 L=10 | Rubber plugΦ10.5 | 3 |
| 29 | 11419001 | 切线刀 | THREAD CUTTER | 1 |
| 30 | 101611005 | 螺钉 | SCREW | 2 |
| 31 | 1361300800 | 绕线夹线器 | BOBBIN THREAD TENSION ASM | 1 |
| 32 | 135220010 | 底板螺钉(头部) | Bed screw stud(head) | 2 |



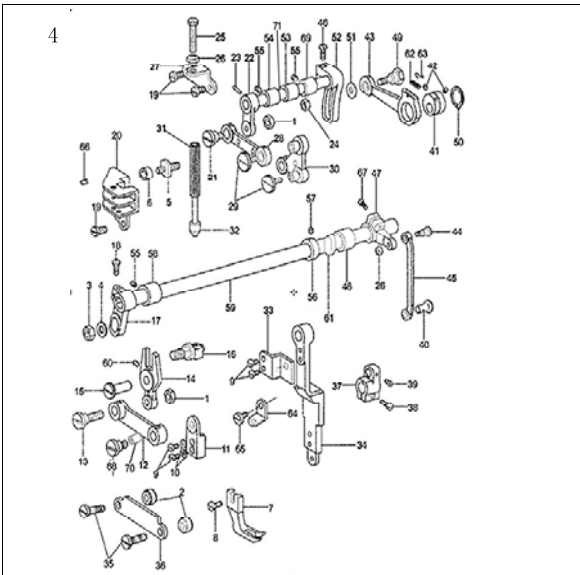
2. 上轴挑线分组件/Main shaft & thread take-up components

| 序号NO. | 公司件号 Part NO. | 名称 PartName | 零件描述 Description | 数量Number |
|-------|------------------|----------------|-------------------------------|----------|
| 1 | 14702011 | 上轴 | Main shaft | 1 |
| 2 | 10122012 | 上轴橡皮塞 | Rubber plug | 1 |
| 3 | 10108003 | 上轴紧圈 | Thrust collar asm. | 1 |
| 4 | 135515004 | 上轴紧固螺钉 | Screw | 2 |
| 5 | 13603023 | 上轴前轴套 | Main shaft bushing,front | 1 |
| 6 | 13503017 | 上轴中轴套 | Brshing, intermediate | 1 |
| 7 | 135515006 | 上轴中轴套 | Screw | 1 |
| 8 | 13603017 | 上轴后套 | Main shaft bushing,back | 1 |
| 9 | 13522010 | 上轴后轴套油封组件 | Main shaft | 1 |
| 10 | 14735002 | 主动轮 | Screw | 1 |
| 11 | S10009 | 主动轮螺钉 | Screw | 1 |
| 12 | 1353800200 | 挑线杆组件 | Thread take-up asm | 1 |
| 13 | 13502003 | 挑线连杆铰链销 | Thread take-up crank shaft | 1 |
| 14 | 135515009 | 挑线连杆铰链销螺钉 | Screw | 2 |
| 15 | 13501001 | 针杆曲柄 | Counterweight | 1 |
| 16 | 101515007 | 挑线曲柄定位螺钉 | Screw | 1 |
| 17 | 135512001 | 挑线曲柄螺钉 | Screw | 1 |
| 18 | 101515004 | 针杆曲柄螺钉 | Screw | 1 |
| 19 | 135511002 | 针杆曲柄定位螺钉 | Screw | 1 |
| 20 | 14703006 | 针杆上衬套 | Needle bar metal,upper | 1 |
| 21 | 10122013 | 针杆上衬套橡皮塞(Φ8.5) | Cap | 1 |
| 22 | 13503007 | 针杆下衬套 | Needle bar metal,lower | 1 |
| 23 | 14735001 | 驱动轮 | BTW-DRIVING-WHEEL | 1 |
| 24 | 13602002 | 针杆 | Needle bar | 1 |
| 25 | 13513011 | 针杆过线环 | Needle bar thread guide | 1 |
| 26 | 13517001 | 机针 | Needle | 1 |
| 27 | 101511006 | 夹针螺钉 | Screw | 1 |
| 28 | 13609001 | 滑块槽 | Needle bar trough | 1 |
| 29 | 11409001 | 针杆接头滑块 | Slide block | 1 |
| 30 | 101511008 | 滑块导轨螺钉 | Screw | 2 |
| 31-1 | 13503002 | 针杆接头 | Needle bar connection | 1 |
| 31-2 | 101511005 | 针杆接头螺钉 | Screw | 1 |
| 32 | 114513001 | 电机安装螺钉 | | 1 |
| 33 | 13628013 | 电机线圈 | | 4 |
| 34 | 136330300 | 充电问题电机 | | 1 |
| 35 | 1473304200 | 简易电控 | Simple model electric control | 1 |
| 36 | S10009 | 驱动轮螺钉 | Screw | 2 |



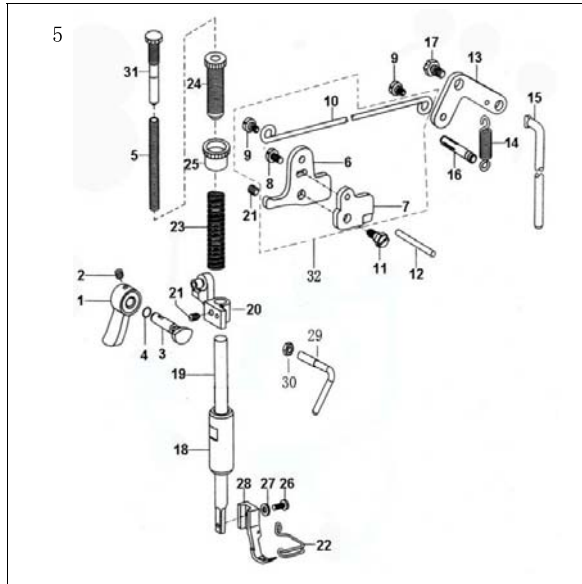
3.送料分组件Feed mechaniam components

| 序号NO. | 公司件号 Part NO. | 名称 PartName | 零件描述 Description | 数量 Number |
|-------|------------------|--------------|--------------------------------------|-----------|
| 1 | 13514001 | 送布牙 | Feed dog | 1 |
| 2 | 1350700300 | 牙架小组件 | Feed bar asm | 1 |
| 3 | 13528004 | 牙架垫圈 | Washer | 1 |
| 4 | 13502005 | 牙架销 | Feed bar shaft | 1 |
| 5 | 101S11018 | 送布牙螺钉 | Screw | 2 |
| 6 | 13504003 | 牙架座 | Feed rocker asm. | 1 |
| 7 | 101S11016 | 曲柄螺钉 | Screw | 2 |
| 8 | 101S11008 | 螺钉 | Screw | 1 |
| 9 | 13602003 | 送布轴 | Feed rocker shaft | 1 |
| 10 | 003001 | 轴用弹性挡圈15 | Retaining ring | 2 |
| 11 | 13503020 | 挡牙、送布轴中轴套 | Thrust collar asm. | 2 |
| 12 | 10108003 | 挡圈 | Screw | 2 |
| 13 | 135S15004 | 螺钉 | Screw | 4 |
| 14 | 13504004 | 送布曲柄（右） | Feed rocker shaft crank asm | 1 |
| 15 | 13528001 | 送布曲柄短销 | Walking foot pin | 1 |
| 16 | 101S11025 | 螺钉 | Screw | 1 |
| 17 | 105S11019 | 螺钉 | Screw | 1 |
| 18 | 13504005 | 抬牙右曲柄 | Feed lifting rock shaft crank(right) | 1 |
| 19 | 13502009 | 抬牙曲柄铰链轴 | Hinge pin | 1 |
| 20 | 13603024 | 送布轴前轴套 | Bushing for feed rock shaft(right) | 2 |
| 21 | 13603005 | 抬牙轴前轴套 | Washer | 2 |
| 22 | 13505004 | 抬牙叉 | Feed forked connection | 1 |
| 23 | 13602004 | 抬牙轴 | Feed lifting rock shaft | 2 |
| 24 | 135S15009 | 抬牙、下轴轴套螺钉 | Screw | 2 |
| 25 | 101S11020 | 抬牙叉夹紧螺钉 | Screw | 1 |
| 26 | 135110002 | 针距调节连接螺钉 | Hinge pin | 1 |
| 27 | 13509003 | 针距座 | Feed regulator | 1 |
| 28 | 101S11020 | 针距座长螺钉 | Screw | 1 |
| 29 | 135S11009 | 针距座短螺钉 | Screw | 1 |
| 30 | 13503026 | 针距座衬套 | Feed regulator bushing | 1 |
| 31 | 13502011 | 针距座轴 | Hinge pin for feed regulator | 1 |
| 32 | 13622014 | 橡皮条(Φ19.5) | Rubber plug(Φ19.5) | 1 |
| 33 | 1350401400 | 倒缝操作杆曲柄组件 | Slide block pin component | 1 |
| 33-1 | 13504006 | 倒缝操作杆曲柄 | Slide block pin | 1 |
| 33-2 | 13502012 | 操作杆曲柄滚柱 | Jorstick crank roller | 1 |
| 33-3 | 13509006 | 滚筒 | Roller | 1 |
| 33-4 | 13509010 | 垫片 | Gasket | 1 |
| 34 | 13527007 | 操作杆曲柄弹簧 | Spring for feed crank | 1 |
| 35 | 135S15014 | 操作杆曲柄螺钉 | Screw | 1 |
| 36 | 301763 | 倒缝操作杆 | Reverse feed lever asm | 1 |
| 37 | 13502013 | 倒缝操作杆短轴 | Reverse feed lever shaft | 1 |
| 38 | 001137 | 0型圈6.3×1.8 | O-ring | 1 |
| 39 | 136S30004 | 针距调节螺钉 | Feed regulator screw bar | 1 |
| 40 | 001046 | 0型圈3.5×2.5 | O-ring | 1 |
| 41 | 1471100200 | 针距标盘 | Dial | 1 |
| 42 | 13522007 | 橡胶套 | | 1 |
| 43 | 101S11012 | 螺钉 | | 1 |
| 44 | 101S11022 | 针距盘螺钉 | Dial screw | 1 |
| 45 | 11426022 | 止动销 | Stopper pin | 1 |
| 46 | 11427034 | 止动销弹簧 | Spring for stopper pin | 2 |
| 48 | 135S15007 | 送布凸轮螺钉 | Screw | 3 |
| 49 | 135110003 | 送布凸轮 | Feed drive eccentric cam. | 1 |
| 50 | 13505005 | 送布连杆 | Rocker shaft connecting rod | 1 |
| 51 | 13505006 | 针距调节连杆 | Feed regulator connecting rod | 1 |
| 52 | 13502014 | 曲柄连杆长销 | Walking foot link | 1 |
| 53 | 13505007 | 曲柄短连杆 | Walking foot pin | 2 |
| 54 | 101S11025 | 送布连杆螺钉 | Screw | 1 |
| 55 | 13505008 | 曲柄短连杆 | connecting link | 2 |
| 56 | 13528003 | 曲柄连杆短销 | Walking foot link | 1 |
| 57 | 201S11012 | 短连杆销螺钉 | Screw | 1 |
| 58 | 201S11007 | 连杆偏心轴螺钉 | Screw | 1 |
| 59 | 13502015 | 连杆偏心轴 | Hinge pin | 1 |
| 60 | 13504007 | 针距调节曲柄 | Walking foot adjusting link | 1 |
| 61 | 13502016 | 针距调节曲柄定位销（左） | Adjusting link fulcrum shaft | 1 |
| 62 | 105S11019 | 左右定位销螺钉 | Screw | 1 |
| 63 | 13502017 | 针距调节曲柄定位销（右） | Adjusting link fulcrum shaft | 1 |
| 64 | 14212008 | 针距按钮 | Feed regulator key-press | 1 |
| 65 | 13527009 | 针距按钮簧 | Dial spring for stopper pin | 1 |
| 66 | 135110001 | 抬牙凸轮 | Feed drive eccentric cam. | 1 |
| 67 | 135S15007 | 抬牙凸轮螺钉 | Screw | 3 |
| 68 | 13528002 | 凸轮隔离片 | Thrust collar | 1 |
| 69 | 13505001 | 抬牙连杆 | Connecting rod | 1 |
| 70 | 135S15006 | 送布轴套螺钉 | Screw | 1 |
| 71 | 135S11048 | 抬牙右曲柄螺钉 | Screw | 2 |
| 72 | 135S11009 | 扳手螺钉 | Set screw | 2 |
| 73 | 135S11022 | 倒缝操作杆紧螺钉 | Screw | 1 |
| 75 | 114S11004 | 左右定位销螺钉 | Screw | 1 |



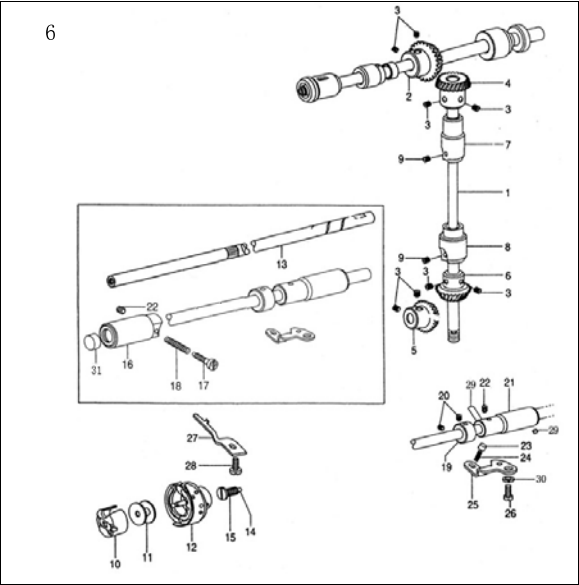
4.上送料部件 Upper feed Parts

| 序号NO. | 公司件号 Part NO. | 名称 PartName | 零件描述 Description | 数量Number |
|-------|------------------|--------------|--------------------------------------|----------|
| 1 | 135S16004 | 压脚送料变动连接螺母 | Nut | 2 |
| 2 | 13508003 | 压脚送料压板垫块 | Shim | 2 |
| 3 | 135S16005 | 压脚曲柄连接螺母 | Nut | 1 |
| 4 | 11629005 | 压脚曲柄连接垫圈6 | Washer | 1 |
| 5 | 135S30006 | 送料曲柄导柱轴 | Guide shaft | 1 |
| 6 | 13508004 | 提升压脚导柱轴滚柱 | Needle of bearing | 1 |
| 7 | 13516002 | 摆压脚 | Walking foot | 1 |
| 8 | 135S11030 | 压脚螺钉 | Screw | 1 |
| 9 | 201S11012 | 摆动压脚座螺钉 | Screw | 4 |
| 10 | 002002 | 摆动压脚座螺钉弹簧垫圈4 | Washer | 2 |
| 11 | 13501004 | 摆压脚衬套 | Holder for walking foot bar | 1 |
| 12 | 13505010 | 摆压脚连杆 | Link of walking foot | 1 |
| 13 | 135S20009 | 压脚送料变动连接螺钉 | Screw | 1 |
| 14 | 13505011 | 摆压脚叉形杆 | Fork lever | 1 |
| 15 | 13526006 | 摆压脚叉形杆销 | Pin | 1 |
| 16 | 1350202000 | 压脚送料变动曲柄轴组件 | Crank shaft complete | 1 |
| 17 | 13504020 | 压脚摆动前曲柄 | Presser swing shaft | 1 |
| 18 | 002S13011 | 前曲柄螺钉 | Screw | 1 |
| 19 | 101S11008 | 提升压脚导柱板螺钉 | Screw | 4 |
| 20 | 13509004 | 提升压脚导柱板 | Lifting presser plate | 1 |
| 21 | 135S20003 | 压脚送料曲柄连杆螺钉 | Screw | 1 |
| 22 | 13504021 | 压脚升降前曲柄 | Presser lifting crank | 1 |
| 23 | 135S26007 | 铜销轴X20 | Pin | 1 |
| 24 | 002001 | 六角螺母M20, 75 | Nut | 1 |
| 25 | 135S30007 | 摆压脚调压螺钉 | Lifting presser adjusting screw | 1 |
| 26 | 135S16006 | 摆压脚调压螺母 | Lifting presser adjusting nut | 2 |
| 27 | 13512018 | 摆压脚调压螺钉架 | Lifting presser bracket for spring | 1 |
| 28 | 13505012 | 压脚送料曲柄连杆 | Presser feed crank link | 1 |
| 29 | 135S11034 | 压脚送料曲柄螺钉 | Screw | 2 |
| 30 | 13504010 | 压脚送料曲柄 | Presser feed crank | 1 |
| 31 | 13527013 | 摆压脚调压杆弹簧 | Lifting presser spring | 1 |
| 32 | 1350202100 | 调压杆弹簧导柱 | Presser spring guide | 1 |
| 33 | 13501005 | 提升压脚导柱定位板 | Lifting presser guide plate | 1 |
| 34 | 13501006 | 摆压脚杆 | Presser rod guide | 1 |
| 35 | 116411005 | 提升压脚连接压板螺钉 | Screw | 2 |
| 36 | 13512019 | 提升压脚连接压板 | Lifting presser sway crank guide pin | 1 |
| 37 | 13504011 | 送布轴曲柄（中） | Feed rocker shaft crank asm | 1 |
| 38 | 116411005 | 送布轴曲柄（中）螺钉 | Screw | 1 |
| 39 | 101S11025 | 大连杆曲柄连接销钉 | Screw | 1 |
| 40 | 135S20004 | 大连杆曲柄连接销钉 | Screw | 1 |
| 41 | 13510006 | 压脚升降偏心轮 | Eccentric wheel | 1 |
| 42 | 101S15007 | 螺钉 | Screw | 2 |
| 43 | 13506013 | 连杆 | Eccentric wheel rod | 1 |
| 44 | 135S20005 | 压脚摆动后曲柄连杆螺钉 | Screw | 1 |
| 45 | 13505014 | 摆压脚大连杆 | Presser swing crank(right)rod | 1 |
| 46 | 135S11035 | 偏心连杆调节曲柄螺钉 | Screw | 1 |
| 47 | 13504012 | 压脚摆动后曲柄 | Presser swing crank(right) | 1 |
| 48 | 13503014 | 压脚摆动轴中轴套 | Presser swing shaft bushing (right) | 1 |
| 49 | 135S20006 | 偏心轮连杆油毡 | Screw | 1 |
| 50 | 003012 | 轴用C型挡圈25 | G-type stop ring | 1 |
| 51 | 13528008 | 垫圈 | Washer | 1 |
| 52 | 13504013 | 偏心杆调节曲柄 | Presser lifting shaft | 1 |
| 53 | 13603025 | 摆压脚提升中轴套 | Presser swing shaft bushing (middle) | 1 |
| 54 | 13603020 | 摆压脚提升轴套 | Presser lifting shaft bushing | 1 |
| 55 | 135S15008 | 垫圈轴套螺钉 | Screw | 3 |
| 56 | 13508009 | 垫圈 | Thrust collar asm. | 1 |
| 57 | 135S15004 | 紧圈螺钉 | Screw | 2 |
| 58 | 13508008 | 压脚摆动轴前轴套 | Presser swing shaft bushing (left) | 1 |
| 59 | 13502023 | 压脚摆动轴 | Presser swing shaft | 1 |
| 60 | 101S11001 | 摆压脚叉形杆的螺钉 | Screw | 1 |
| 61 | 1142200800 | 摆压脚后轴油封 | Oil seal | 1 |
| 62 | 13523002 | 偏心轮连杆油毡 | Oil felt for needle bar | 1 |
| 63 | 13527015 | 偏心轮连杆油毡压簧 | Spring | 1 |
| 64 | 13512020 | 提升压脚导柱架 | Lifting presser guide plate | 1 |
| 65 | 135S11036 | 导柱架螺钉 | Screw | 1 |
| 66 | 003035 | 弹性圆柱销3X8 | Spring plug | 2 |
| 67 | 002S13011 | 后曲柄螺钉 | Screw | 1 |
| 68 | 135S20011 | 压脚送料连杆螺钉 | Screw | 1 |
| 69 | 13603021 | 摆压脚提升后轴套 | Presser lifting shaft bushing | 1 |
| 71 | 13502022 | 压脚升降轴 | Shaft | 1 |



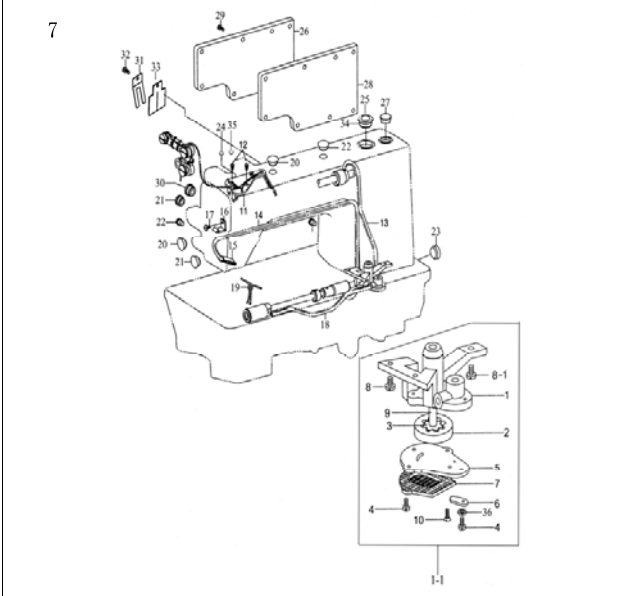
5. 压脚部件 Presser Foot

| 序号NO. | 公司件号 Part NO. | 名称PartName | 零件描述Description | 数量Number |
|-------|------------------|------------|---------------------------------|----------|
| 1 | 14711005 | 压脚扳手 | Presser bar lifter | 1 |
| 2 | 101S11008 | 压脚扳手螺钉 | Set screw | 1 |
| 3 | 13S10004 | 压架杆提升凸轮 | Presser bar lifting cam | 1 |
| 4 | 001009 | O型圈4.5X1.8 | O-ring | 1 |
| 5 | 14727012 | 辅助调压弹簧 | Presser spring | 1 |
| 6 | 13S12013 | 膝腔提升杆(左) | Knee lifter lever (left) | 1 |
| 7 | 13S10005 | 松线凸轮 | Tension releasing cam | 1 |
| 8 | 13S811026 | 膝腔提升杆(左)螺钉 | Knee lifter lever (left) screw | 1 |
| 9 | 13S811027 | 铰链螺钉 | Hinged screw | 2 |
| 10 | 13S12014 | 膝腔提升杆 | Knee lifter rod | 1 |
| 11 | 13S811028 | 松线凸轮螺钉 | Screw | 1 |
| 12 | 13S02018 | 松线杆 | Tension releasing pin | 1 |
| 13 | 13S12015 | 膝腔提升杆(右) | Knee lifter lever (right) | 1 |
| 14 | 13S27010 | 膝腔提升杆(右)弹簧 | Presser spring | 1 |
| 15 | 13S12016 | 膝腔提升杆 | Knee lifter connecting rod | 1 |
| 16 | 13S20005 | 弹簧销 | Pin for spring | 1 |
| 17 | 13S812002 | 膝腔提升杆(右)螺钉 | Knee lifter lever (right) screw | 1 |
| 18 | 13S03013 | 压架杆轴套 | Presser bar bushing | 1 |
| 19 | 13S02019 | 压架杆 | Presser bar | 1 |
| 20 | 13S05009 | 压架杆导架 | Presser bar lifting bracket | 1 |
| 21 | 13S815003 | 压架杆导架螺钉 | Set screw | 2 |
| 22 | 13S12017 | 前护勾 | Defend tick off | 1 |
| 23 | 14727011 | 压架杆弹簧 | Presser spring | 1 |
| 24 | 13S830004 | 调压螺钉 | Lock nut | 1 |
| 25 | 13S816003 | 调压螺钉锁紧螺母 | Set screw | 1 |
| 26 | 101S11009 | 压脚螺钉 | Screw | 1 |
| 27 | 13S28007 | 垫圈 | Washer | 1 |
| 28 | 13S16001 | 小压脚 | Presser foot complete | 1 |
| 29 | 11413011 | 固定式线勾 | Upper thread guide | 1 |
| 30 | 401S16001 | 螺母 | Screw | 1 |
| 31 | 13S830005 | 辅助调压螺钉 | Auxiliary lock nut | 1 |
| 32 | 13S120100 | 膝腔提升杆(左)组件 | Knee lifter lever (left)asm | 1 |



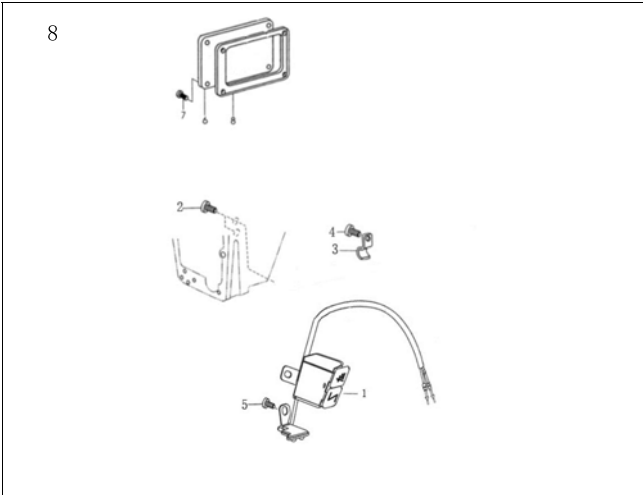
6. 旋梭部件 Hook components

| 序号NO. | 公司件号 Part NO. | 名称PartName | 零件描述Description | 数量Number |
|-------|------------------|------------|---------------------------------|----------|
| 1 | 13S02002 | 竖轴 | Upring shaft | 1 |
| 2 | 13S25001 | 上轴伞齿轮 | Gear asm. | 1 |
| 3 | 101S15007 | 螺钉 | Screw | 8 |
| 4 | 13S25002 | 竖轴伞齿轮(上) | Gear asm. | 1 |
| 5 | 13S25003 | 下轴伞齿轮 | Pinion asm. | 1 |
| 6 | 13S25004 | 竖轴伞齿轮(下) | Gear asm. | 1 |
| 7 | 13S03018 | 竖轴轴套(上) | Bushing, upper | 1 |
| 8 | 13S03019 | 竖轴下轴套 | Upring shaft bushing, over | 1 |
| 9 | 13S815008 | 螺钉 | Screw | 2 |
| 10 | 10818502 | 梭壳 | Hook asm | 1 |
| 11 | 10818501 | 梭芯 | Bobbin | 1 |
| 12 | 1081801 | 梭梭 | Hook asm | 1 |
| 13 | 13S02007 | 下轴 | Hook driving shaft | 1 |
| 14 | 10123003 | 下轴滤油嘴 | Oil wick | 1 |
| 15 | 13S520007 | 下轴滤油嘴螺钉 | Screw | 1 |
| 16 | 13S03009 | 下轴前轴套 | Bushing, front | 1 |
| 17 | 13S520008 | 油量调节螺钉 | Oil adjusting screw | 1 |
| 18 | 13S27005 | 油量调节弹簧 | Spring | 1 |
| 19 | 10108002 | 下轴挡圈 | Thrust collar asm. | 1 |
| 20 | 101S11012 | 螺钉 | Screw | 2 |
| 21 | 13060025 | 下轴后轴套 | Bushing, rear | 1 |
| 22 | 13S815009 | 下轴轴套螺钉 | Screw | 2 |
| 23 | 13S02008 | 柱塞 | Plunger | 1 |
| 24 | 13S27006 | 柱塞弹簧 | Plunger spring | 1 |
| 25 | 13S12009 | 档板 | Guide plate | 1 |
| 26 | 13S811019 | 档板螺钉 | Screw | 1 |
| 27 | 13612005 | 旋梭定位勾 | Rotating hook positioner | 1 |
| 28 | 101S11011 | 旋梭定位勾螺钉 | Screw | 1 |
| 29 | 13S21001 | 下轴轴套油管 | Oil pipe for hook shaft bushing | 1 |
| 30 | W02004 | 档板螺钉弹簧垫圈 | Washer | 1 |
| 31 | 10122015 | 下轴油封 | Plunger | 1 |



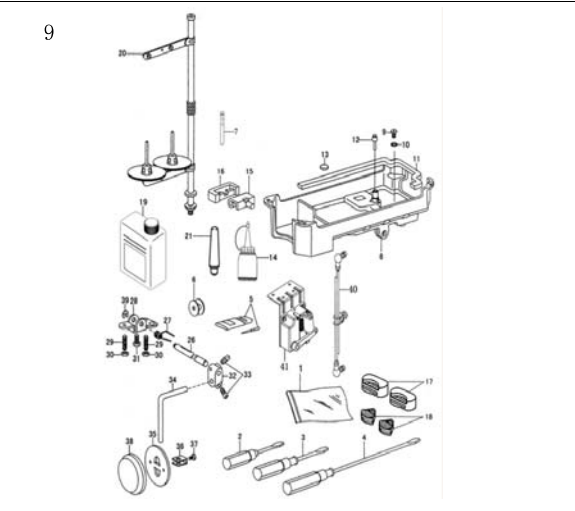
7. 油泵部件 Oil pump and Lubrication mechanism

| 序号NO. | 公司件号 Part NO. | 名称PartName | 零件描述Description | 数量Number |
|-------|------------------|--------------------|-----------------------------------|----------|
| 1-1 | 13S2000200 | 油泵组件 | Oil pump asm | 1 |
| 1 | 13S20001 | 油泵体 | Oil pump | 1 |
| 2 | 13S25005 | 油泵大齿轮 | Big gear for oil pump | 1 |
| 3 | 13S25006 | 油泵小齿轮 | Small gear for oil pump | 1 |
| 4 | 13S811037 | 油泵调节板螺钉 | Screw | 3 |
| 5 | 13S12021 | 油泵体盖板 | Cover for oil pump | 1 |
| 6 | 13S12022 | 油泵调节板 | Adjusting plate for oil pump | 1 |
| 7 | 13S12024 | 油泵滤网 | Filter complete | 1 |
| 8 | 10S811019 | 油泵螺钉 | Screw | 3 |
| 8-1 | 114S11004 | 油泵螺钉 | Screw | 1 |
| 9 | 13S02024 | 油泵体短轴 | Shaft for oil pump | 1 |
| 10 | 802024 | 油泵体盖板螺钉 | Screw | 1 |
| 11 | 13S1202400 | 油线固定板大组件 | Oil wick set plate complete | 1 |
| 12 | 101S11010 | 油线固定板螺钉 | Screw | 2 |
| 13 | 13S2100700 | 上轴油管组件 | Oil pipe complete for upper shaft | 1 |
| 14 | 12921002 | 回油管 Φ3XΦ4 | Oil return pipe | 1 |
| 15 | 13S23003 | 回油管滤油毡 | Oil felt | 1 |
| 16 | 13S12025 | 回油管夹 | Pipe return pipe clamp | 1 |
| 17 | 201S11014 | 回油管夹螺钉 | Screw | 1 |
| 18 | 1362100100 | 下轴油管组件 | Oil pipe for arm shaft | 1 |
| 18-1 | 13621001 | 下轴油管 | Oil pipe for shaft | 1 |
| 18-2 | 13636001 | 下轴油管接头 | Hose connector | 1 |
| 19 | 10423005 | 油线 2.5x260/2.5x290 | Oil wick | 各1 |
| 20 | 13S22001 | 面板橡皮塞 (Φ19) | Rubber plug (Φ19) | 1 |
| 21 | 13S22002 | 面板橡皮塞 (Φ11.8) | Rubber plug (Φ11.8) | 1 |
| 22 | 13S22003 | 橡皮塞 (Φ8.8) | Rubber plug Φ8.8 | 2 |
| 23 | 13S22004 | 橡皮塞 (Φ27) | Rubber plug Φ27 | 1 |
| 24 | 13S22005 | 橡皮塞 (Φ5.7) | Rubber plug Φ5.7 | 2 |
| 25 | 10111004 | 油窗 | Oil sight window | 1 |
| 26 | 304715 | 后盖板 | Side plate | 1 |
| 27 | 13S22008 | 橡皮塞 (Φ25.5) | Rubber plug Φ25.5 | 1 |
| 28 | 14722006 | 后盖板密封垫片 | Gasket | 1 |
| 29 | 101S11001 | 后盖板螺钉 | Screw | 8 |
| 30 | 12922001 | 橡皮塞 | Rubber plug Φ12.5 | 1 |
| 31 | 305102 | 小挡油板 | Keep off plate | 1 |
| 32 | 101S11004 | 小挡油板螺钉 | Screw | 1 |
| 33 | 14722011 | 小挡油板羊毛毡 | Gasket | 1 |
| 34 | 10122019 | 油窗O型圈 | O-ring | 1 |
| 35 | 14022013 | AAS-0754孔塞8.5 | Rubber plug Φ8.5 | 1 |
| 36 | W02002 | 油泵调节板螺钉弹簧垫圈 | Spring washer | 1 |



8. 开关组件 Switch components

| 序号NO. | 公司件号 Part NO. | 名称PartName | 零件描述Description | 数量Number |
|-------|------------------|------------|---------------------------|----------|
| 1 | 1473009000 | LED灯开关组件 | Switch assembly | 1 |
| 2 | 101s11004 | 开关安装架螺钉 | Screw | 1 |
| 3 | | 塑料线夹 | Clamps | 3 |
| 4 | 101S11002 | 塑料线夹螺钉 | Screw | 1 |
| 5 | 101s11004 | 开关安装架螺钉 | Screw | 2 |
| 6 | 302662 | 绝缘电磁铁盖板 | Backstitch solenoid cover | 1 |
| 7 | 301S11011 | 绝缘电磁铁螺钉 | Screw | 4 |
| 8 | 13628009 | 绝缘电磁铁罩垫片 | Seals | 1 |



9. 附件 Oil Reservoir Accessories

| 序号NO. | 公司件号 Part NO. | 名称PartName | 零件描述Description | 数量Number |
|-------|------------------|------------|--------------------------|----------|
| 1 | 40131017 | 防尘罩 | Machine head cover | 1 |
| 2 | 10131004 | 螺钉起子 (小) | Screw driver(small) | 1 |
| 3 | 10131003 | 螺钉起子 (中) | Screw driver(middle) | 1 |
| 4 | 10131002 | 螺钉起子 (大) | Screw driver(large) | 1 |
| 5 | 13517001 | 机针 | Needle | 4 |
| 6 | 10818501 | 梭芯 | Bobbin | 5 |
| 7 | 11212001 | 过线柱 | Needle bar crank | 1 |
| 8 | 13501007 | 油盒 | Oil reservoir | 1 |
| 9 | 135S11041 | 放油螺钉 | Screw | 1 |
| 10 | 301047 | 放油螺钉垫圈 | Washer | 1 |
| 11 | 13523006 | 油盒垫 | Gasket | 1 |
| 12 | 13511006 | 膝控提升顶杆 | Knee press lifter rod | 1 |
| 13 | 10131001 | 磁块 | Magnet | 1 |
| 14 | 20131038 | 小油壶 | Oil pot | 1 |
| 15 | 10122060 | 机壳胶垫 | Rubber coat | 2 |
| 16 | 1011203100 | 机壳胶垫套 | Hing | 2 |
| 17 | 10122023 | 机头防震垫块 (大) | Cushion(big) | 2 |
| 18 | 10122022 | 机头防震垫块 (小) | Cushion(small) | 2 |
| 19 | 1011101200 | 油箱 | Oil tank | 1 |
| 20 | 1353100300 | 线架组件 | Spool stand complete | 1 |
| 21 | 10111011 | 机头支架 | Frame support bar | 1 |
| 26 | 13502025 | 膝控铰链轴 | Hinge pin | 1 |
| 27 | 13527014 | 膝控复位弹簧 | Spring | 1 |
| 28 | 13512026 | 膝控限位架 | Knee lifter stop bracket | 1 |
| 29 | 135S15019 | 膝控限位调节螺钉 | Screw | 2 |
| 30 | N01029 | 调节螺母 | Nut | 2 |
| 31 | 135S12003 | 膝控限位架螺钉 | Screw | 1 |
| 32 | 10101008 | 磁块弯杆接头 | Connector | 1 |
| 33 | 101s12003 | 磁块弯杆接头螺钉 | Screw | 2 |
| 34 | 10112028 | 膝控磁块弯杆 | Bent rod | 1 |
| 35 | 10112029 | 膝控磁块 | Bell | 1 |
| 36 | 10112030 | 磁块架 | Bell bracket | 1 |
| 37 | 101s12004 | 磁块架螺钉 | Screw | 1 |
| 38 | 10122024 | 磁块垫 | Pin | 1 |
| 39 | N005011 | 开口挡圈 | Split stop ring | 1 |
| 40 | | 脚踏连杆 | Pedal connecting rod | 1 |
| 41 | | 电控制脚踏 | Electric control pedal | 1 |