



JK-T1900G

产品零件图册

Parts book

JACK 杰克

快速服务 100%

股票代码

603337

杰克缝纫机

全球销量遥遥领先

400-8876-858
www.chinajack.com



杰克缝纫机股份有限公司

中国浙江省台州市椒江区三甲东海大道东段1008号

电话: 4008890100

传真: 0086-576-88177758

产品标准代号: Q/TK 007-2017

资料如有更改, 恕不另行通知, 以实样为准

JACK SEWING MACHINE CO.,LTD.

NO.1008, DONGHAI AVENUE EAST, JIAOJIANG DISTRICT,TAIZHOU CITY, ZHEJIANG

TEL: 4008890100

FAX:0086-576-88177758

Standard code of the products:Q/TK 007-2017

You will be not informed if the file has been revised. Please set sample as standard.

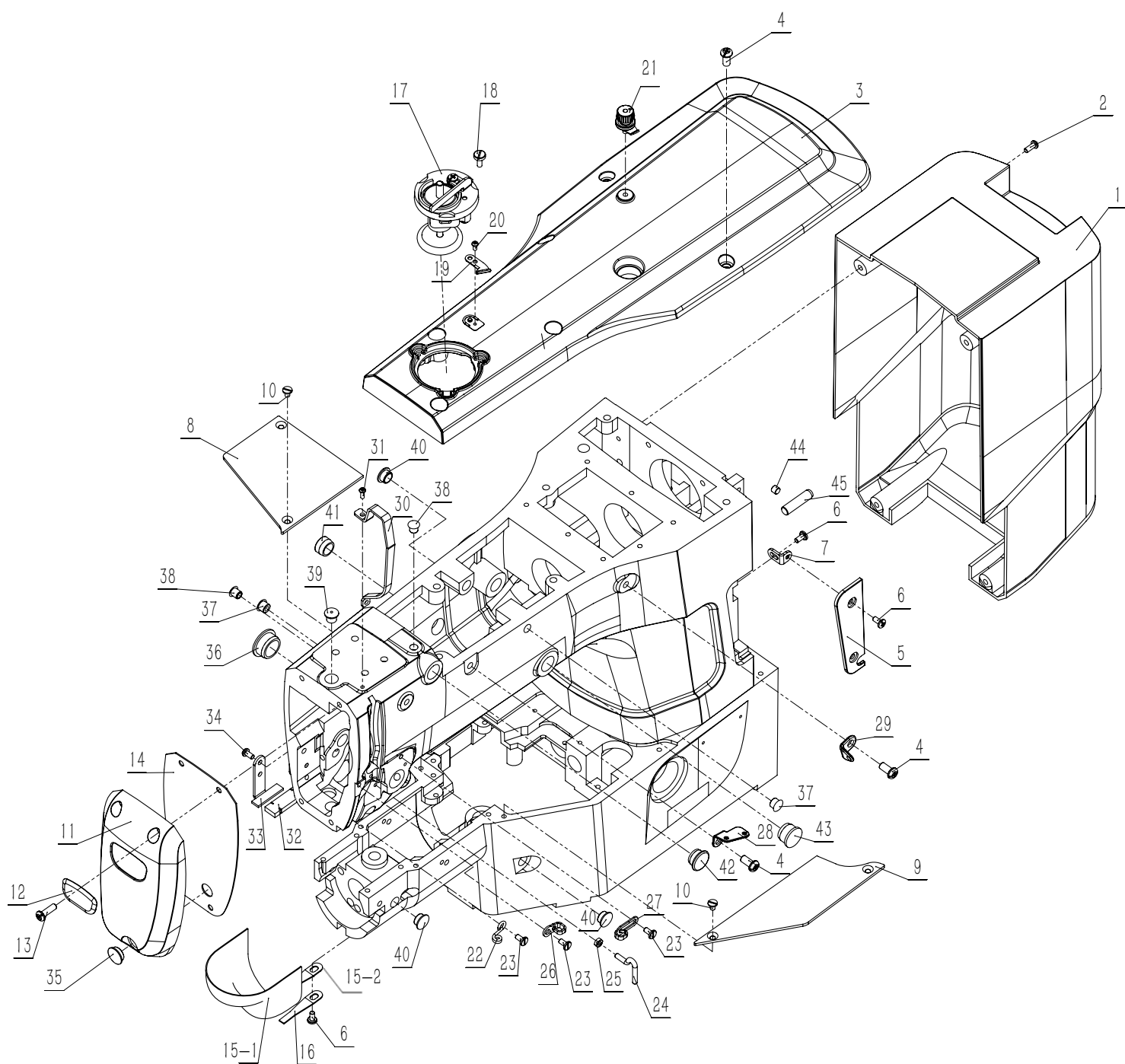
CONTENTS

目 录

| | |
|---|----|
| 1、FRAME & MISCELLANEOUS COVER COMPONENTS..... | 1 |
| 机身及罩壳部件 | |
| 2、MAIM SHAFT & NEEDLE BAR COMPONENTS..... | 3 |
| 上轴针杆部件 | |
| 3、PRESSER LIFTER & WIPER COMPONENTS..... | 5 |
| 抬压及拨线部件 | |
| 4、SHUTTLE DRIVER SHAFT COMPONENTS..... | 7 |
| 下轴部件 | |
| 5、THREAD TENSION COMPONENTS..... | 9 |
| 紧线部件 | |
| 6、THREAD TRIMMER MECHANISM COMPONENTS..... | 11 |
| 剪线部件 | |
| 7、FEED MECHANISM COMPONENTS..... | 13 |
| 送料部件 | |
| 8、PRESSER MECHANISM COMPONENTS..... | 15 |
| 中压脚部件（1906G专用部件） | |
| 9、SENSOR COMPONENTS..... | 17 |
| 安全开关部件 | |
| 10、THREAD STAND COMPONENTS..... | 20 |
| 线架部件 | |
| 11、TABLE STAND COMPONENTS..... | 21 |
| 台板机架部件 | |
| 12、ACCESSORIE PART COMPONENTS..... | 23 |
| 附件部件 | |
| 13、ACCESSORIES PARTS FOR 1903G SUBBCLASSES..... | 25 |
| 1903G 附件 | |
| 14、EXCLUSIVE PARTS FOR 1903G..... | 27 |
| 1903G 专用部件 | |
| 15、FOOT PRESS LIST..... | 29 |
| 压脚清单 | |
| 16、EXCLUSIVE PARTS FOR 1906GHQ..... | 31 |
| 1906GHQ专用部件 | |
| 17、SPACIAL PURPOSE PARTS OF THE INTERNET FOR 1900G-D..... | 33 |
| 1900G-D物联网专用部件 | |
| 18、SPACIAL PURPOSE PARTS OF THE INTERNET FOR 1900G-B..... | 35 |
| 1900G-B物联网专用部件 | |
| 19、EXCLUSIVE PARTS FOR 1906GHQ..... | 37 |
| 1906GSZ专用部件 | |
| 20、EXCLUSIVE PARTS FOR 1900GMC..... | 39 |
| 1900GMC专用部件 | |

1、FRAME & MISCELLANEOUS COVER COMPONENTS

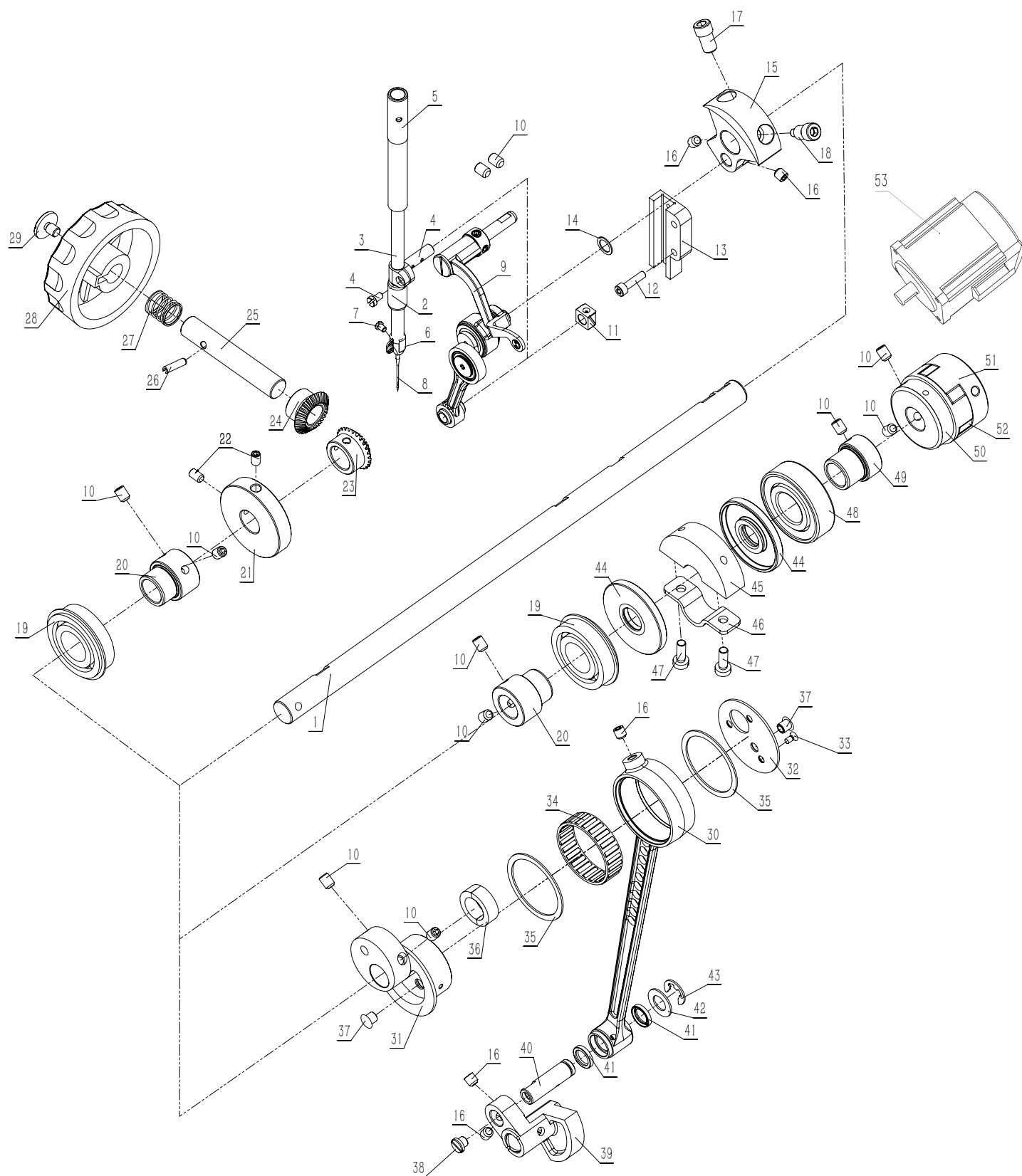
机身及罩壳部件



| 序号 | 注解 | 公司件号 | 名称 | DESCRIPTION | 用量 |
|------|----|-------------|-------------|---|----|
| 1 | | 40311601 | 后罩 | REAR COWL | 1 |
| 2 | | S04079 | 螺钉 M4×10 | SCREW M4×10 | 4 |
| 3 | | 40301601 | 顶盖 | HEAD COVER | 1 |
| | | 303592 | 顶盖(喷漆) | HEAD COVER (SPRAY-PAINTER) | |
| 4 | | 403S11009 | 螺钉 M6×12 | SCREW M6×12 | 8 |
| 5 | | 40312614 | 侧盖板 | THE SIDE COVER | 1 |
| | | 303593 | 侧盖板(喷漆) | THE SIDE COVER (SPRAY-PAINTER) | |
| 6 | | 403S11013 | 螺钉 M4×8 | SCREW M4×8 | 5 |
| 7 | | 40312615 | 侧盖板支架 | SIDE COVER SUPPORT | 2 |
| 8 | | 40312601 | 底座左盖板 | LEFT COVER PLATE OF BASE | 1 |
| | | 303594 | 底座左盖板(喷漆) | LEFT COVER PLATE OF BASE (SPRAY-PAINTER) | |
| 9 | | 40312602 | 底座右盖板 | RIGHT COVER PLATE OF BASE | 1 |
| | | 303595 | 底座右盖板(喷漆) | RIGHT COVER PLATE OF BASE (SPRAY-PAINTER) | |
| 10 | | 403S11011 | 螺钉 M4×6 | SCREW M4×6 | 4 |
| 11 | | 40301602 | 面板 | FRONT-PANEL | 1 |
| | | 303596 | 面板(喷漆) | FRONT-PANEL (SPRAY-PAINTER) | |
| 12 | | 13837002 | 商标 | TRADE MARK | 1 |
| 13 | | 403S11026 | 螺钉 M5×16 | SCREW M5×16 | 4 |
| 14 | | 40322601 | 面板垫 | FRONT-PANEL PAD | 1 |
| 15-1 | | 140312004 | 梭床罩组件 | SHUTTLE RACE COVER | |
| | | 930000024 | 梭床罩组件(喷漆) | SHUTTLE RACE COVER (SPRAY-PAINTER) | 1 |
| 15-2 | | 14031200500 | 连接臂组件 | PITMAN ARM | |
| 16 | | 40127014 | 梭床罩弹簧片 | SHUTTLE RACE COVER SPRING | 1 |
| 17 | | 4033160900 | 绕线器组件 | BOBBIN WINDER | 1 |
| 18 | | 403S11015 | 螺钉 | SCREW M4×11 | 3 |
| 19 | | 11419001 | 切线刀 | THREAD CUTTER | 1 |
| 20 | | 403S11020 | 螺钉 M3×6 | SCREW M3×6 | 1 |
| 21 | | 4031360100 | 绕线夹线器组件 | BOBBIN WINDER TENSION ASM | 1 |
| 22 | | 40313012 | 下过线钩 | BUTTON THREAD HOOK | 1 |
| 23 | | 403S11019 | 螺钉 M4×8 | SCREW M4×8 | 3 |
| 24 | | 40313004 | 过线钩 | THREAD HOOK | 1 |
| 25 | | 403S16004 | 过线钩螺母 | NUT M4 | 1 |
| 26 | | 41712078 | 左线钩 | LEFT THREAD HOOK | 1 |
| 27 | | 40213010 | 右线钩 | RIGHT THREAD HOOK | 1 |
| 28 | | 40113004 | 双眼过线板 | THREAD GUIDE PLATE (TWO HOLE) | 1 |
| 29 | | 40313003 | 过线板 | THREAD GUIDE PLATE | 1 |
| 30 | | 40112002 | 防护罩 | PROTECTIVE | 1 |
| | | 300674 | 防护罩(喷漆) | PROTECTIVE (SPRAY-PAINTER) | |
| 31 | | S04076 | 螺钉 M3×8 | SCREW M3×8 | 2 |
| 32 | | 40330025 | LED灯 | LED | 1 |
| 33 | | 40312622 | LED灯安装板 | LED LIGHTS MOUNTING PLATE | 1 |
| 34 | | 413s13011 | 螺钉 M4×12 | SCREW M4×12 | 2 |
| 35 | | 40122017 | 面板塞 D13×4 | RUBBER PLUG D13×4 | 1 |
| 36 | | 40122015 | 油塞 D21×9 | RUBBER PLUG D21×9 | 1 |
| 37 | | 40322019 | 油塞 D8.5×6 | RUBBER PLUG D8.5×6 | 2 |
| 38 | | 40122006 | 油塞 D7×10 | RUBBER PLUG D7×10 | 2 |
| 39 | | 40322014 | 针杆油塞 D8.4×7 | RUBBER PLUG D8.4×7 | 1 |
| 40 | | 40122016 | 油塞 D10.5×5 | RUBBER PLUG D10.5×5 | 3 |
| 41 | | 40322021 | 油塞 D15×9 | RUBBER PLUG D15×9 | 1 |
| 42 | | 40122007 | 油塞 D16×6.5 | RUBBER PLUG D16×6.5 | 1 |
| 43 | | 41322018 | 油塞 D16.5×10 | RUBBER PLUG D16.5×10 | 1 |
| 44 | | 413S14003 | 螺钉 M6×5 | SCREW M6×5 | 4 |
| 45 | | 40326001 | 支承销 | HINGE STUD | 2 |

2、MAIM SHAFT & NEEDLE BAR COMPONENTS

上轴针杆部件



| 序号 | 注解 | 公司件号 | DESCRIPTION | 名称 | 用量 |
|------|---------|-------------|--------------|---------------------------|----|
| 1 | | 40302601 | 上轴 | MAIN SHAFT | 1 |
| 2 | | 40303016 | 针杆下套 | NEEDLE ROD LOWER METAL | 1 |
| 3 | | 40302015 | 针杆 | NEEDLE BAR | 1 |
| 4 | | 40304015 | 针杆连接柱组件 | BEARING | 1 |
| 5 | | 40303015 | 针杆上套 | NEEDLE ROD METAL | 1 |
| 6 | | 40313009 | 下过线 | THREAD GUIDE | 1 |
| 7 | | 201S11005 | S012螺钉 | S012SCREW | 1 |
| 8-1 | | 40317011 | 机针DP×5 #11 | NEEDLE DP×5 #11 | 1 |
| 8-2 | | 40517001 | 机针DP×17 #14 | NEEDLE DP×17 #14 | 1 |
| 8-3 | | 40117001 | 机针DP×5 #16 | NEEDLE DP×5 #16 | 1 |
| 8-4 | | 40319006 | 机针DP×17 #19 | NEEDLE DP×17 #19 | 1 |
| 9-1 | | 4033800400 | 挑线杆组件 | THREAD TAKE UP LEVER ASM | 1 |
| 9-2 | 1900G专用 | 14033800100 | 挑线杆组件 | THREAD TAKE UP LEVER ASM | 1 |
| 9-3 | 1903G专用 | 14033800200 | 挑线杆组件 | THREAD TAKE UP LEVER ASM | 1 |
| 10 | | 403S14005 | 螺钉 M6×8 | SCREW M6×8 | 13 |
| 11 | | 41709001 | 滑块 | SLIDE BLOCK | 1 |
| 12 | | 403S13015 | 螺钉 M4×16 | SCREW M4×16 | 2 |
| 13 | | 41709002 | 滑块导向 | SLIDE BLOCK | 1 |
| 14 | | 40328018 | 垫片 | WASHER | 1 |
| 15-1 | | 40510001 | 针杆曲柄 | COUNTER WEIGHT | 1 |
| 15-2 | 1900G专用 | 40310005 | 针杆曲柄 | COUNTER WEIGHT | 1 |
| 16 | | 403S14006 | 螺钉 M6×0.75×6 | SCREW M6×0.75×6 | 5 |
| 17 | | 403S13008 | 螺钉 M8×12 | SCREW M8×12 | 1 |
| 18 | | 403S13007 | 曲柄定位螺钉 | COUNTER WEIGHT SCREW A | 1 |
| 19 | | B10002 | 上轴轴承 | BEARING | 2 |
| 20 | | 40303012 | 轴承套 | BEARING BUSH -A | 2 |
| 21 | | 40335002 | 绕线轮 | BTW-DRIVING-WHEEL | 1 |
| 22 | | 403S14008 | 螺钉 M5×8 | SCREW M5×8 | 2 |
| 23 | | 40325010 | 上轴转动齿轮 | GEAR A | 1 |
| 24 | | 40325011 | 手轮轴齿轮 | GEAR B | 1 |
| 25 | | 40326602 | 手轮传动轴 | GEAR C | 1 |
| 26 | | P03002 | 销 2×5.5 | SPRING PIN 2×5.5 | 1 |
| 27 | | 40327004 | 弹簧 | SPRING | 1 |
| 28 | | 4031160600 | 手轮组件 | PULLEY | 1 |
| 29 | | 403S11003 | 螺钉 M6×8 | SCREW M6×8 | 1 |
| 30 | | 42305001 | 连杆 | CONNECTINGROD | 1 |
| 31 | | 40310007 | 偏心轮 | ECCENTRIC | 1 |
| 32 | | 40312064 | 连杆挡板 | CRANK-ROD-SUPPORT-PLATE | 1 |
| 33 | | 403S17001 | 螺钉 M3×6 | SCREW M3×6 | 3 |
| 34 | | 40324014 | 滚针轴承 | NEEDLEROLLERBEARING | 1 |
| 35 | | 40328027 | 连接轴承挡圈 | CONNECTTHEBEARINGRETAINER | 2 |
| 36 | | 40323007 | 油毡 | LINOLEUM | 2 |
| 37 | | 40322023 | 挡板油塞 | PLUG D=6.7 L=6 | 2 |
| 38 | | 403S11021 | 螺钉 M6×4.5 | SCREW M6×4.5 | 1 |
| 39 | | 40325604 | 摆齿 | OSCILLATOR | 1 |
| 40 | | 40326026 | 摆齿轴 | PENDULUMGEARSHAFT | 1 |
| 41 | | 40322024 | 油封 | OIL SEAL | 2 |
| 42 | | 41728001 | 垫片 | WASHER | 1 |
| 43 | | H05008 | 卡簧 | E-SHAPEDSNAP RING (8mm) | 1 |
| 44 | | 40322602 | 上轴油封 | THE SHAFT SEAL | 2 |
| 45 | | 40312067 | 平行块 | AC SERVO MOTOR | 1 |
| 46 | | 40312066 | 固定板 | CRANK-BALANCER-FIX-PLATE | 1 |
| 47 | | 403S11023 | 螺钉 M5×14 | SCREW M5×14 | 2 |
| 48 | | B04009 | 轴承 | BEARING | 1 |
| 49 | | 40303601 | 轴承套 | BEARING BUSH -B | 1 |
| 50 | | 40301023 | 传动连接块 | COUPLING 1 | 1 |
| 51 | | 40301024 | 传动连接块 | COUPLING 2 | 1 |
| 52 | | 40322028 | 减震橡胶 | DAMPING RUBBER | 1 |
| 53 | | 140333006 | 主轴电机 | SPINDLE MOTOR | 1 |

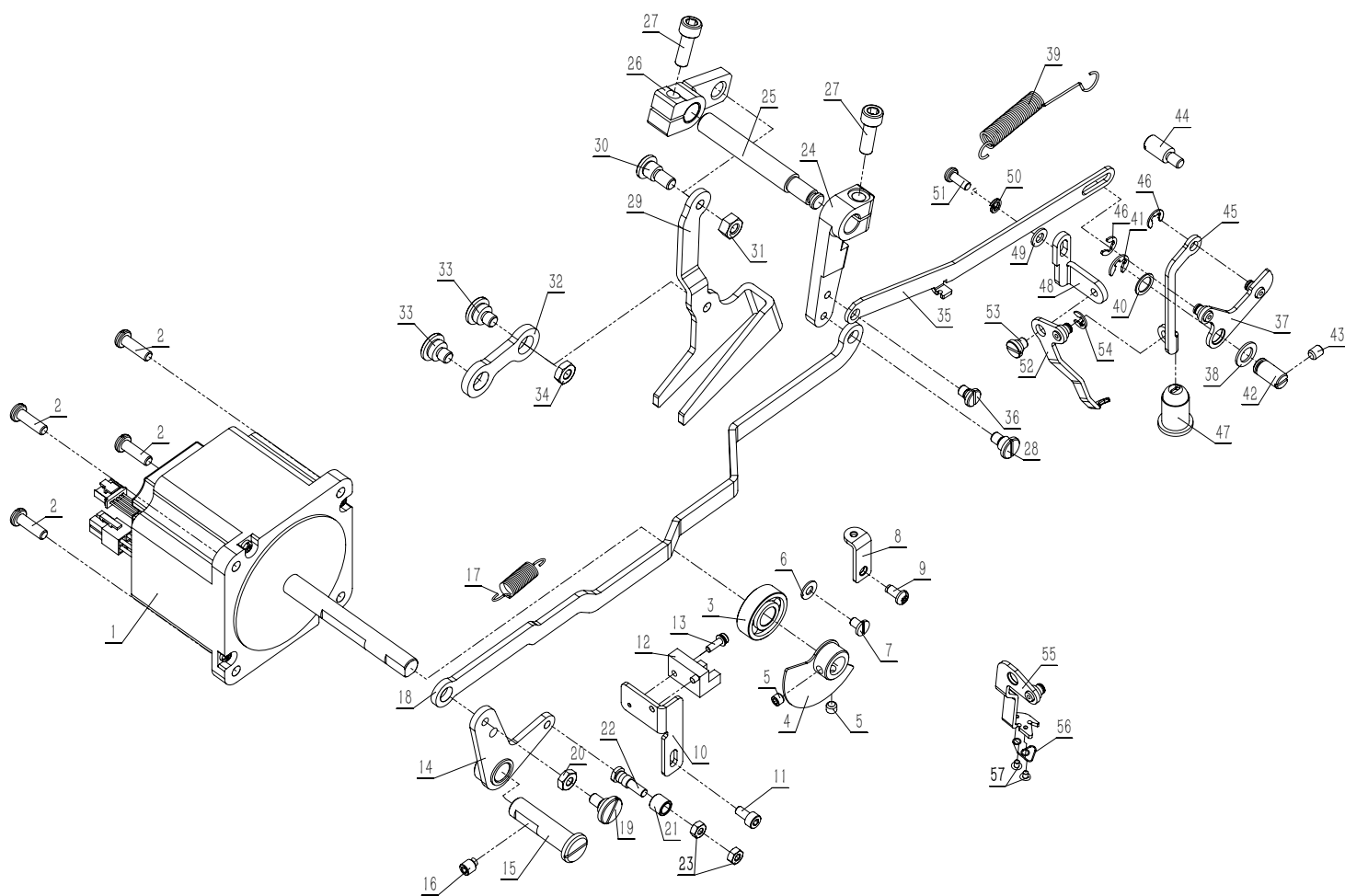
备注：1900GM使用DP×5 11号机针；

1900GL、1903G、1903GAK、1906GS、1906GP使用DP×17 14号机针；

1900GS、1900GY使用DP×5 16号机针；

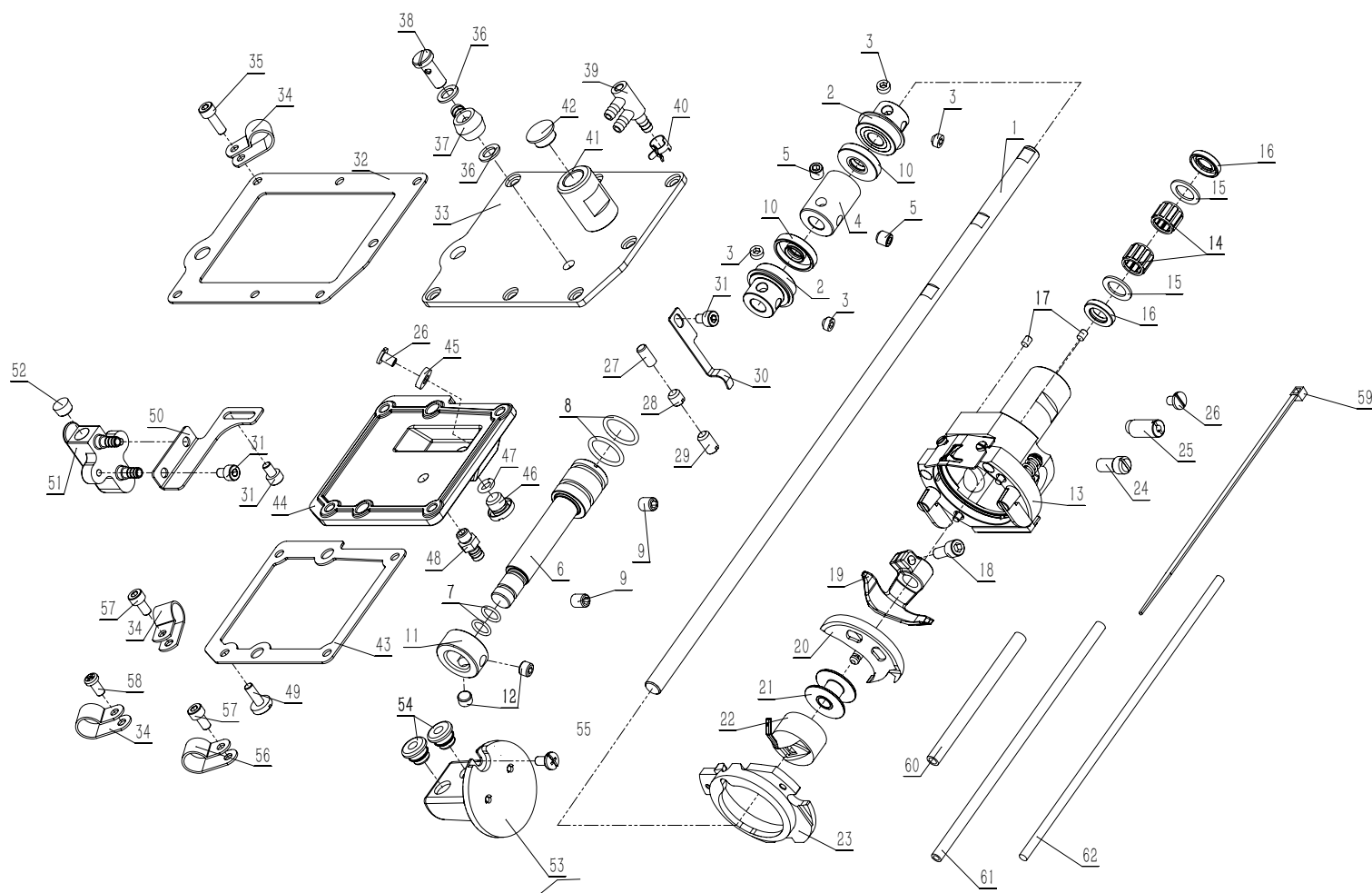
1906GH、1900GH、1900GN使用DP×17 19号机针

3、PRESSER LIFTER & WIPER COMPONENTS 抬压及拨线部件



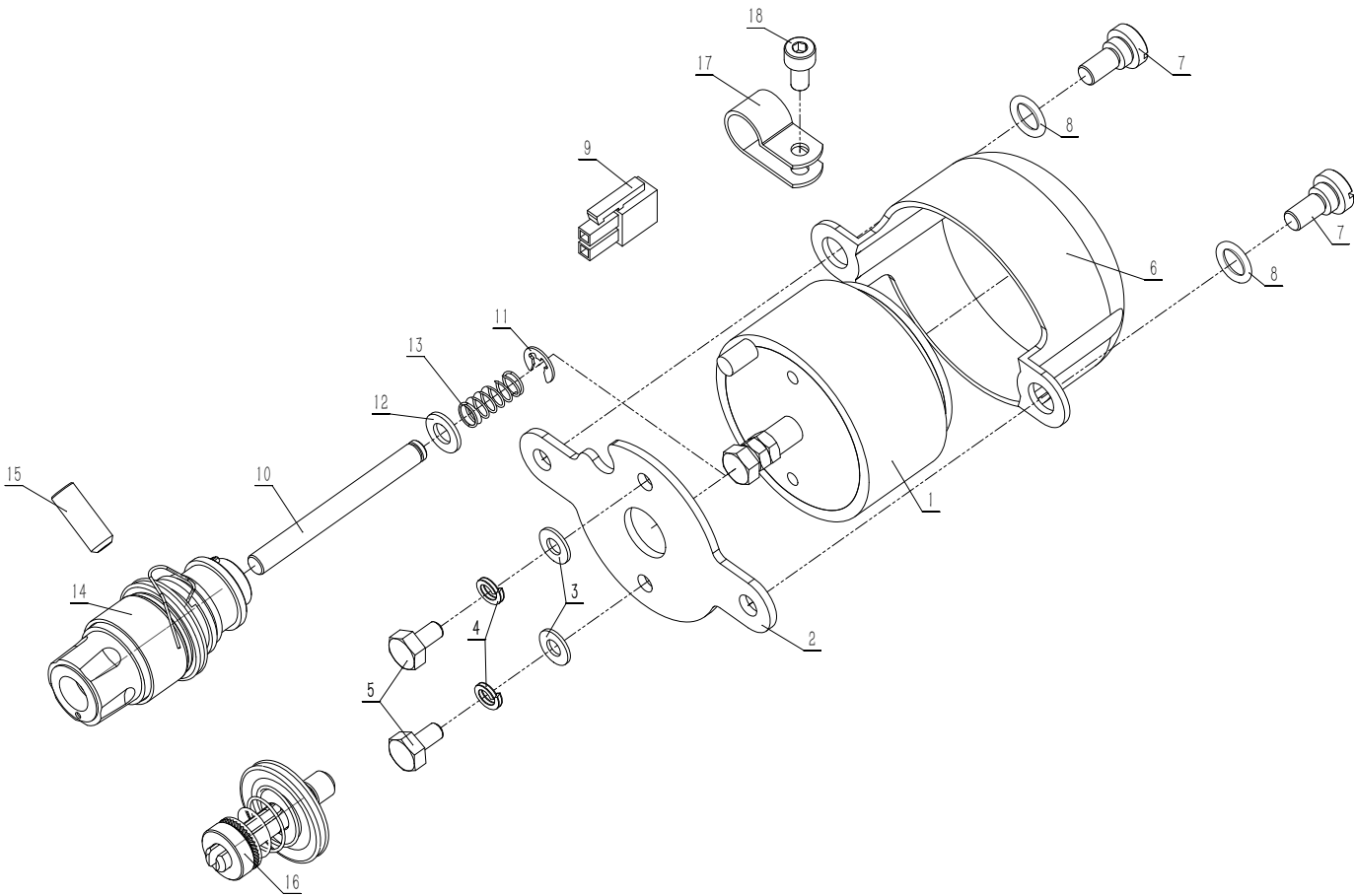
| 序号 | 注解 | 公司件号 | 名称 | DESCRIPTION | 用量 |
|-----|----|------------|-----------------|-----------------------------|----|
| 1-1 | —B | 40333601 | 剪线电机 | PRESSER LIFTING MOTOR | 1 |
| 1-2 | —D | 40333604 | 剪线电机 | PRESSER LIFTING MOTOR | 1 |
| 2 | | 403S11026 | 螺钉 M5×16 | SCREW M5×16 | 4 |
| 3 | | 40324009 | 轴承6000ZZNR | BTW BEARING | 1 |
| 4 | | 4031211800 | 抬压脚传感板组件 | SENSOR SLIT ASM | 1 |
| 5 | | 207s11042 | 螺钉M5×5 | SCREW M5×5 | 2 |
| 6 | | 40328019 | 垫片 | WASHER | 1 |
| 7 | | 403S11011 | 螺钉 M4×8 | SCREW M4×8 | 1 |
| 8 | | 40312069 | 拉簧板 | HOOK COVER PUSH SPRING | 1 |
| 9 | | 403S11027 | 螺钉 M4×7.5 | SCREW M4×7.5 | 1 |
| 10 | | 40312603 | 传感器安装板 | SENSOR INSTALLING BASE | 1 |
| 11 | | 413S13016 | 螺钉 M4×8 | SCREW M4×8 | 1 |
| 12 | | ----- | 传感器 | PHOTO SENSOR | 1 |
| 13 | | 413S13026 | 传感器螺钉组件 | HINGE SCREW | 1 |
| 14 | | 40312068 | 拨线曲柄 | LIFTER LINK A ASM. | 1 |
| 15 | | 40326016 | 拨线曲柄轴 | CONNECTING SHAFT | 1 |
| 16 | | 403S11016 | 螺钉 M6×8 | SCREW M6×8 | 1 |
| 17 | | 40127019 | 弹簧 | SPRING | 1 |
| 18 | | 40312604 | 拨线连接杆 | LIFTER LINK B | 1 |
| 19 | | 403S20010 | 轴位螺钉 M5 | SHOULDER SCREW M5 | 1 |
| 20 | | 403S16006 | 螺母 M5 | NUT M5 | 1 |
| 21 | | 40303017 | 滚筒 | NEEDLE CAM ROLLER A | 1 |
| 22 | | 403S20009 | 轴位螺钉 M4 | SHOULDER SCREW M4 | 1 |
| 23 | | N01001 | 螺母 M4 | NUT M4 | 2 |
| 24 | | 40305013 | 拨线转动曲柄 M4 | CONNECTING ARM | 1 |
| 25 | | 40326017 | 曲柄轴 | CONNECTING SHAFT | 1 |
| 26 | | 40305014 | 抬压脚曲柄 | LOWERING ARM | 1 |
| 27 | | S05030 | 螺钉 M6×18 | SCREW M6×18 | 2 |
| 28 | | 403S20011 | 轴位螺钉 M5 | SHOULDER SCREW M5 | 1 |
| 29 | | 40312605 | 抬压脚转动杆 | LOWERING FOOT | 1 |
| 30 | | 403S20012 | 轴位螺钉 M6 | SHOULDER SCREW M6 | 1 |
| 31 | | 403S16007 | 螺母 M6 | NUT M6 | 1 |
| 32 | | 40312008 | 连接杆 | CONNECTING LINK | 1 |
| 33 | | 403S20013 | 轴位螺钉 M6 | SHOULDER SCREW M6 | 2 |
| 34 | | 403S16008 | 螺母 M6 | NUT M6 | 1 |
| 35 | | 40312606 | 扫线调节杆 | WIPER CONNECTING LINK | 1 |
| 36 | | 403S20014 | 轴位螺钉 | HINGE SCREW | 1 |
| 37 | | 4031215200 | 扫线连接板组件 | WIPER CONNECTING-ARM-ASM | 1 |
| 38 | | 40328042 | 垫片 | WASHER | 1 |
| 39 | | 40127011 | 弹簧 | SPRING | 1 |
| 40 | | 40328018 | 垫片 | WASHER | 1 |
| 41 | | 40129001 | 卡簧 | RETAINING RING 4.7 | 1 |
| 42 | | 40326039 | 扫线连接板销 | WIPER CONNECTING-LINK-SHAFT | 1 |
| 43 | | 207s11042 | 螺钉 M5×5 | SCREW M5×5 | 1 |
| 44 | | 403S13021 | 止动螺钉 | WIPER -STOPPER | 1 |
| 45 | | 40312154 | 扫线连接拉板 | WIPER CONNECTING-PLATE | 1 |
| 46 | | 40108011 | 挡圈4.7 | THRUST COLLAR ASM | 2 |
| 47 | | 40122012 | 沪油冒 | WIPER BASE PLATE | 1 |
| 48 | | 40312078 | 扫线杆固定架 | WIPER BASE PLATE | 1 |
| 49 | | W01001 | 垫片 | WASHER | 1 |
| 50 | | W02008 | 弹垫2-4 | WASHER 2-4 | 1 |
| 51 | | 403S11012 | 螺钉 M4×10 | SCREW M4×10 | 1 |
| 52 | | 4031207700 | 扫线杆组件 | WIPER C ASM | 1 |
| 53 | | 403S20016 | 轴位螺钉 M5 | SHOULDER SCREW M5 | 1 |
| 54 | | 40108004 | E形挡圈4 | THRUST COLLAR ASM | 1 |
| 55 | | 4051201500 | 扫线杆组件 | WIPER BASE PLATE | 1 |
| 56 | | 40527014 | 弹簧 | SPRING | 1 |
| 57 | | 405S11007 | 螺钉 SM3/32"×56×3 | SCREW SM3/32"×56×3 | 2 |

4、SHUTTLE DRIVER SHAFT COMPONENTS
下轴部件



| 序号 | 注解 | 公司件号 | 名称 | DESCRIPTION | 用量 |
|------|----------------------------|------------|---------------------|---------------------------------|------|
| 1 | | 40302602 | 下轴 | LOWER SHAFT | 1 |
| 2 | | 40324602 | 下轴轴承 | BEARING | 2 |
| 3 | | S10015 | 螺钉 M4×6 | SCREW M4×6 | 4 |
| 4 | | 40325601 | 下轴齿轮 | SHAFT GEAR | 1 |
| 5 | | 403s11016 | 螺钉 M6×6 | SCREW M6×6 | 2 |
| 6 | | 40302603 | 偏心轴 | OSCILLATOR SHAFT | 1 |
| 7 | | 40322609 | O型圈 | O-RINGS | 2 |
| 8 | | 40322610 | O型圈 | O-RINGS | 2 |
| 9 | | 403s14005 | 螺钉 M6×8 | SCREW M6×8 | 2 |
| 10 | | 40322603 | 下轴油封 | THE SHAFT SEAL | 2 |
| 11 | | 40308003 | 挡圈 | THRUST-COLLAR | 1 |
| 12 | | 409S14003 | 螺钉 SM1/4×40 L=4 | SCREW SM1/4×40 L=4 | 2 |
| 13 | | 4031800700 | 梭床组件 | SHUTTLE ASM. | 1 |
| 14 | | 40324010 | 滚针轴承 | BEARING | 2 |
| 15 | | 40328020 | 垫片 | SHUTTLE BEARING RING | 2 |
| 16 | | 40322031 | 油封 | SHUTTLE OLL SEAL | 2 |
| 17 | | 40323007 | 油毡 | ONCE THROUGH OLL | 2 |
| 18 | | 401s13005 | 螺钉 SM3/16×28 L=12.0 | SCREW SM3/16×28 L=12.0 | 1 |
| 19-1 | | 140318001 | 摆梭拖 | SUTTLE-DRIVER | 1 |
| 19-2 | 1900GN专用 | 40318005 | 摆梭拖 | SUTTLE-DRIVER | 1 |
| 20-1 | | 40118501 | 摆梭 | SHUTTLE | 1 |
| 20-2 | 1900GH、1906GH | 40318501 | 摆梭 | SHUTTLE | 1 |
| 20-3 | 1900GN专用 | 41718018 | 摆梭 | SHUTTLE | 1 |
| 21-1 | | 40118004 | 梭心 | BOBBIN | 1 |
| 21-2 | 1900GN专用 | 41718004 | 梭心 | BOBBIN | 1 |
| 22-1 | | 40318011 | 梭壳 | BOBBIN CASE ASM. (RACING PREVE) | 1 |
| 22-2 | 1900GN专用 | 4171801700 | 梭壳 | BOBBIN CASE ASM. (RACING PREVE) | 1 |
| 23-1 | | 40318004 | 梭床盖 | INNER HOOK PRESSER ASM. | 1 |
| 23-2 | 1900GH、1900GN、 1906GH专用 | 40318006 | 梭床盖 | INNER HOOK PRESSER ASM. | 1 |
| 24 | | 403s11030 | 螺钉 M6×12 | SHUTTLE-ASM-SCRERW | 1 |
| 25 | | 40326019 | 梭床座调节销 | SHUTTLE -PACE-ADJUSTING | 1 |
| 26 | | 403s11011 | 螺钉 M4×6 | SCREW M4×6 | 2 |
| 27 | | 40322026 | 橡皮塞 | RUBBER PLUG | 1 |
| 28 | | 403S14014 | 螺钉 M6×6 | SCREW M6×6 | 1 |
| 29 | | 403S14021 | 螺钉 M6×10 | SCREW M6×10 | 1 |
| 30 | | 40312079 | 油管压板 | OIL-PIPE-HOLDER | 1 |
| 31 | | 413S13003 | 螺钉 M4×6 | SCREW M4×6 | 5 |
| 32 | | 40322607 | 油箱上密封垫 | GASKET | 1 |
| 33 | | 40301604 | 油箱上盖 | TANK COVER | 1 |
| 34 | | 40311015 | 油管夹 | CABLE CLIP | 5 |
| 35 | | 413S13011 | 螺钉 M4×8 | SCREW M4×8 | 7 |
| 36 | | 20122033 | 垫片 | GASKET | 2 |
| 37 | | 20736007 | 油管接头 | TERMINAL | 1 |
| 38 | | 206S30009 | 过油螺钉 M6×15.5 | SCREW M6×15.5 | 1 |
| 39 | | 41736001 | 管接头L | TERMINAL L | 1 |
| 40 | | 20429001 | | TUBING CIRCLIP | 6 |
| 41 | | 140311001 | 加油帽 | FILLER LOCKING CAP | 1 |
| 42 | | 40122016 | 橡皮塞 | RUBBER PLUG | 1 |
| 43 | | 40322606 | 密封垫 | GASKET | 1 |
| 44 | | 40301603 | 油箱底盖 | THE TANK BOTTOM COVER | 1 |
| 45 | | 40347601 | 环形磁铁 | RING MAGNET | 1 |
| 46 | | 406s11001 | 放油螺钉 | SCREW | 1 |
| 47 | | 001031 | O型圈 | O-RINGS | 1 |
| 48 | | 14036002 | 回油嘴 | BACK TO THE NOZZLE | 1 |
| 49 | | 403s11015 | 油箱底盖螺钉 | SCREW | 4 |
| 50 | | 40312613 | 液位窗支架 | LIQUID LEVEL WINDOW STENTS | 1 |
| 51 | | 40311604 | 液位窗 | LIQUID LEVEL WINDOW | 1 |
| 52 | | 40322605 | 油塞 | OIL PLUG | 1 |
| 53 | | 4031101700 | 油窗组件 | OIL TANK ASM. | 1 |
| 54 | | 40322027 | 橡皮塞 | RUBBER PLUG | 2 |
| 55 | | 403S11013 | 螺钉 M4×8 | SCREW M4×8 | 1 |
| 56 | | 40311016 | 电线夹 | CABLE CLIP | 1 |
| 57 | | 403s11028 | 螺钉 M4×8 | SCREW M4×8 | 1 |
| 58 | | 413S13016 | 螺钉 M4×8 | SCREW M4×8 | 3 |
| 59 | | 40111005 | 线扣 | CABLE CLIP | 2 |
| 60 | | 14021001 | 油管 | TUBING | 0.8M |
| 61 | | 12921002 | 维尼龙油管 | VINYLON TUBING | 1.5M |
| 62 | | 41723016 | 油线 | OIL GROOVE | 3M |

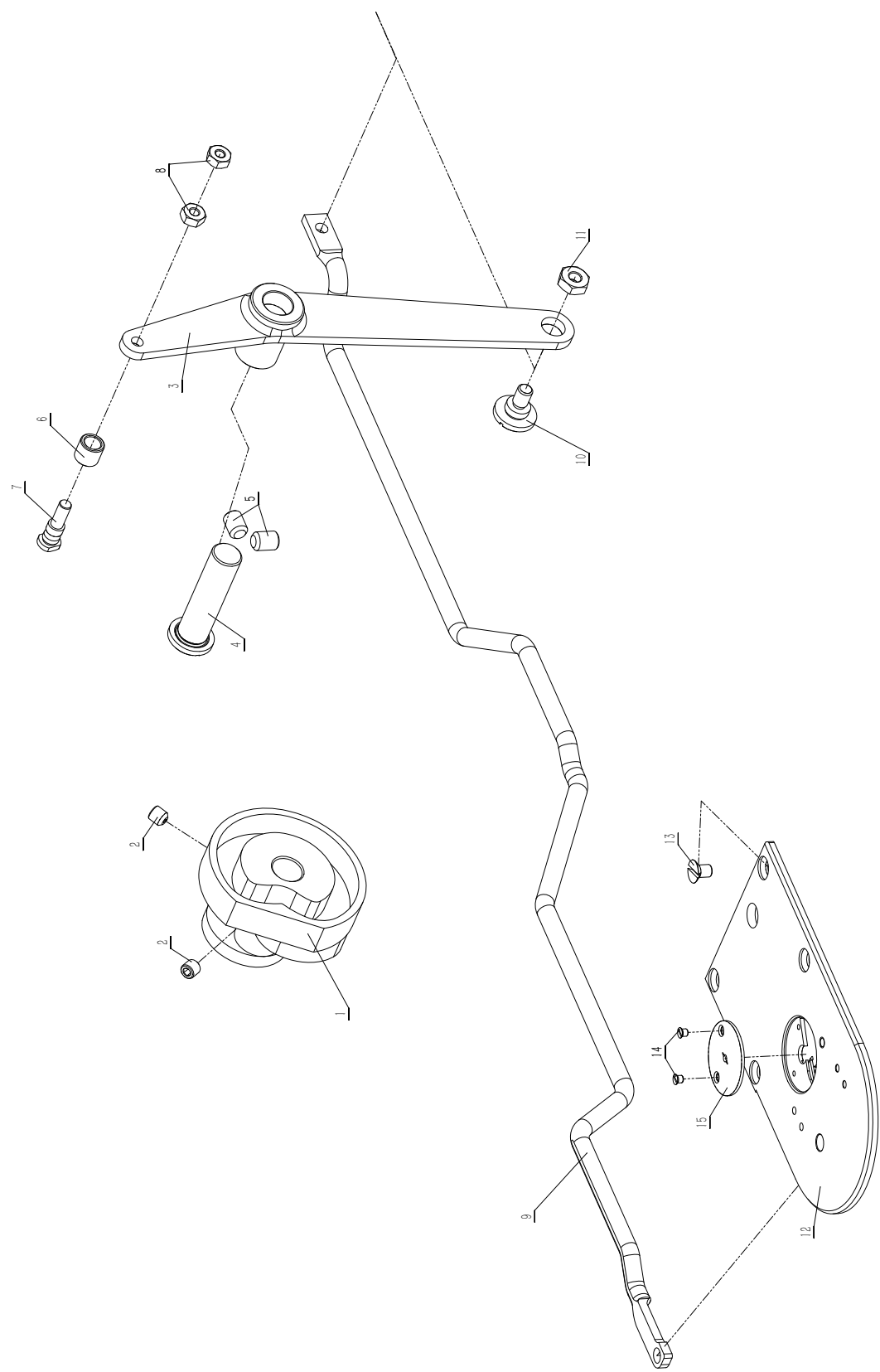
5、THREAD TENSION COMPONENTS
紧线部件



| 序号 | 注解 | 公司件号 | 名称 | DESCRIPTION | 用量 |
|------|----|------------|-----------------|---------------------------|----|
| 1 | | 4033002400 | 松线电磁铁组件 | TENSION RELEASE SOLENOID | 1 |
| 2 | | 41712099 | 电磁铁安装板 | SETTING PLATE SOLENOID | 1 |
| 3 | | W01001 | 平垫圈 4 | WASHER PLANT 4 | 2 |
| 4 | | W02008 | 弹垫2-4 | WASHER SPRING2-4 | 2 |
| 5 | | L02031 | 六角头螺栓全螺纹 C级M4×8 | BOLT M4×8 | 2 |
| 6 | | 40311609 | 松线电磁铁外罩 | SOLENOID COVER | 1 |
| 7 | | 417S30012 | 段螺钉 7-3 | SHOULDE SCREW 7-3 | 2 |
| 8 | | 41722021 | O形圈P7 | O RING P7 | 3 |
| 9 | | 61905001 | 接插件 | CONNECTOR | 1 |
| 10 | | 40326041 | 松线杆 | TENTION RELEASE BAR | 1 |
| 11 | | H05029 | 开口挡圈E4(进口) | PATAINING RING E4 | 1 |
| 12 | | W01009 | 平垫圈5 | WASHER PLANT 5 | 1 |
| 13 | | 41727013 | 弹簧 | SPRING COMPRESSION | 1 |
| 14-1 | | 4033161000 | 薄料夹线器组件 | SECOND THREAD TENTION ASM | 1 |
| 14-2 | | 4033161100 | 厚料夹线器组件 | SECOND THREAD TENTION ASM | 1 |
| 15 | | 403S14016 | 螺钉 M6×16 | SCREW M6×16 | 1 |
| 16 | | 4013100400 | 张力控制器 | FIRT THREAD TENTION ASM | 1 |
| 17 | | 40311015 | 油管夹 | TUBING CLAMPS | 1 |
| 18 | | 413S13016 | 螺钉 M4×8 | SCREW M4×8 | 1 |

备注：1900GS、1900GM、1900GL、1906GS、1906GP、1900GY使用4033161000薄料夹线器组件；
1903G、1903GAK、1906GH、1900GH、1900GN使用4033161100厚料夹线器组件。

6、THREAD TRIMMER MECHANISM COMPONENTS
剪线部件



| 序号 | 注解 | 公司件号 | 名称 | DESCRIPTION | 用量 |
|------|----|-------------|------------------------|--------------------------|-----|
| 1 | | 42310001 | 剪线凸轮 | THREAD TRIMMER CAM | 1 |
| 2 | | S10002 | 螺钉 M5×5 | SCREW M5×5 | 2 |
| 3 | | 40312101 | 连接板 | THREAD TRIMMER LINK ASM. | 1 |
| 4 | | 40326016 | 拨线曲柄轴 | THREAD TRIMMER SHAFT | 1 |
| 5 | | 403s14005 | 螺钉 M6×8 | SCREW M6×8 | 2 |
| 6 | | 40303019 | 滚珠 | NEEDLE CAM ROLLER A | 1 |
| 7 | | 403s20009 | 轴位螺钉 | SHOULDER SCREW | 1 |
| 8 | | N01001 | 螺母 M4 | NUT M4 | 2 |
| 9 | | 40312608 | 剪线杆连杆 | CONNECTING BAR | 1 |
| 10 | | 403s20010 | 轴位螺钉 | SHOULDER SCREW | 1 |
| 11 | | 403s16006 | 螺母 M5 | NUT M5 | 1 |
| 12-1 | | 4031560100 | 针板组件 | NEEDLE PLATE ASM | 1 |
| 12-2 | | 4031560200 | 针板组件 | NEEDLE PLATE ASM | 1 |
| 12-3 | | 4031560300 | 针板组件 | NEEDLE PLATE ASM | 1 |
| 12-4 | | 4051560100 | 针板组件 | NEEDLE PLATE ASM | 1 |
| 12-5 | | 14031500700 | 针板组件（短线头） | NEEDLE PLATE ASM | 1 |
| 13 | | 1403NS17001 | 螺钉 M4×6 | SCREW M4×6 | 4 |
| 14 | | 401S17006 | 螺钉SCREW SM3/32"×56×2.5 | SCREW SM3/32"×56×2.5 | (2) |
| 15-1 | | 40115002 | 针孔板 | NEEDLE HOLE GUIDE | (1) |
| 15-2 | | 40315025 | 针孔板 | NEEDLE HOLE GUIDE | (1) |
| 15-3 | | 40315033 | 针孔板 | NEEDLE HOLE GUIDE | (1) |
| 15-4 | | 40515001 | 针孔板 | NEEDLE HOLE GUIDE | (1) |
| 15-5 | | 40515007 | 针孔板 | NEEDLE HOLE GUIDE | (1) |
| 15-6 | | 140315008 | 针孔板（短线头） | NEEDLE HOLE GUIDE | (1) |
| 15-7 | | 140515002 | 针孔板（短线头钉扣） | NEEDLE HOLE GUIDE | 1 |
| 15-8 | | 140315009 | 针孔板（短线头厚料） | NEEDLE HOLE GUIDE | 1 |

备注：(1)1900GS、1900GY、1900GM、1900GL、1906GS、1906GP使用4031560100针板组件；

1900GH、1906GH使用4031560200针板组件；

1900GN使用4031560300针板组件；

1903G、1903GAK使用4051560100针板组件。

(2)1900GM、1900GL使用40315025小针板；

1903G使用40515001小针板；

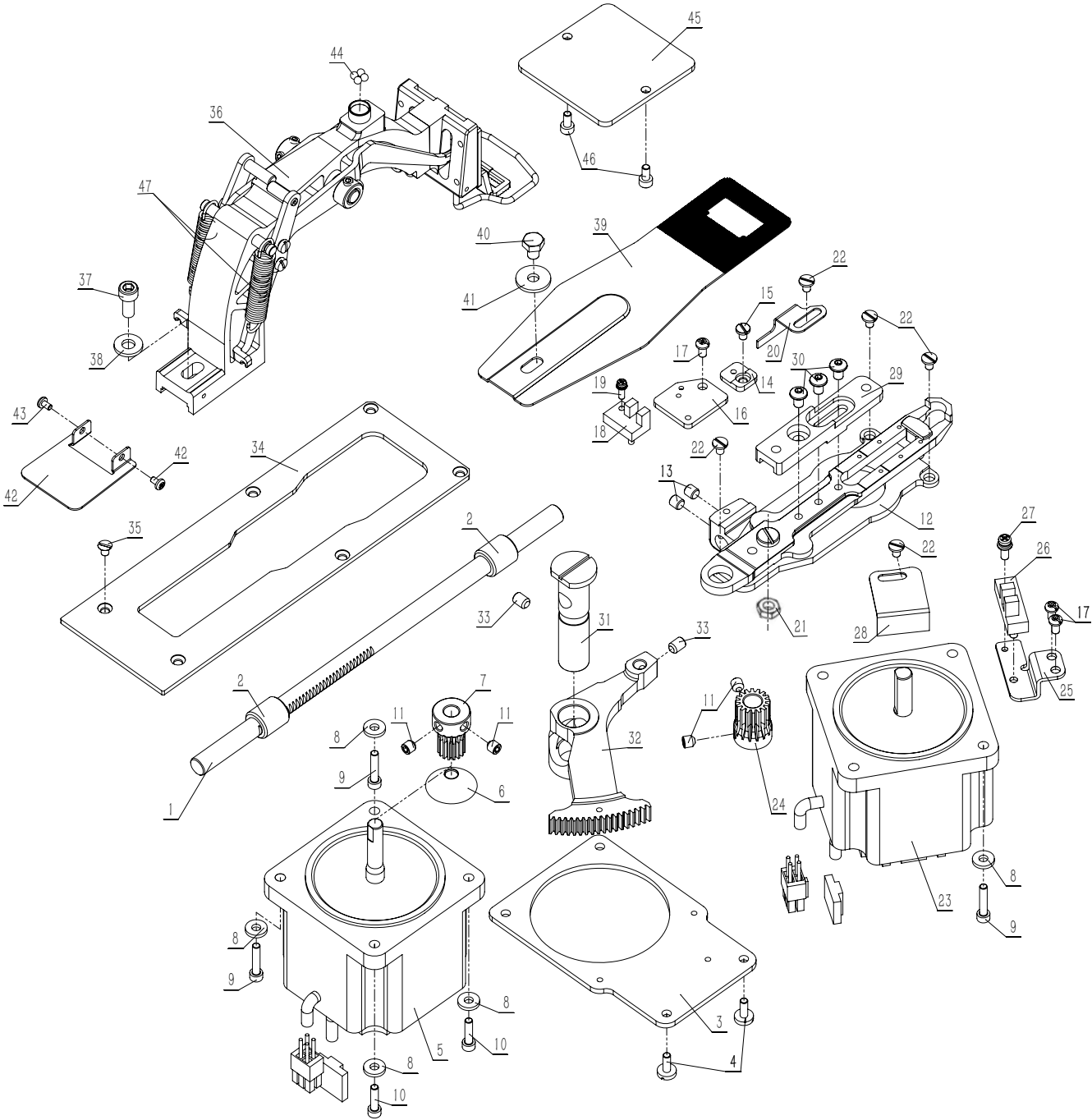
1903GAK使用40515007小针板；

1906GS、1906GP、1900GS、1900GY使用40115002小针板；

1906GH、1900GH使用40315033小针板。

(3)小针板属于针板组件但是可以单独购买。

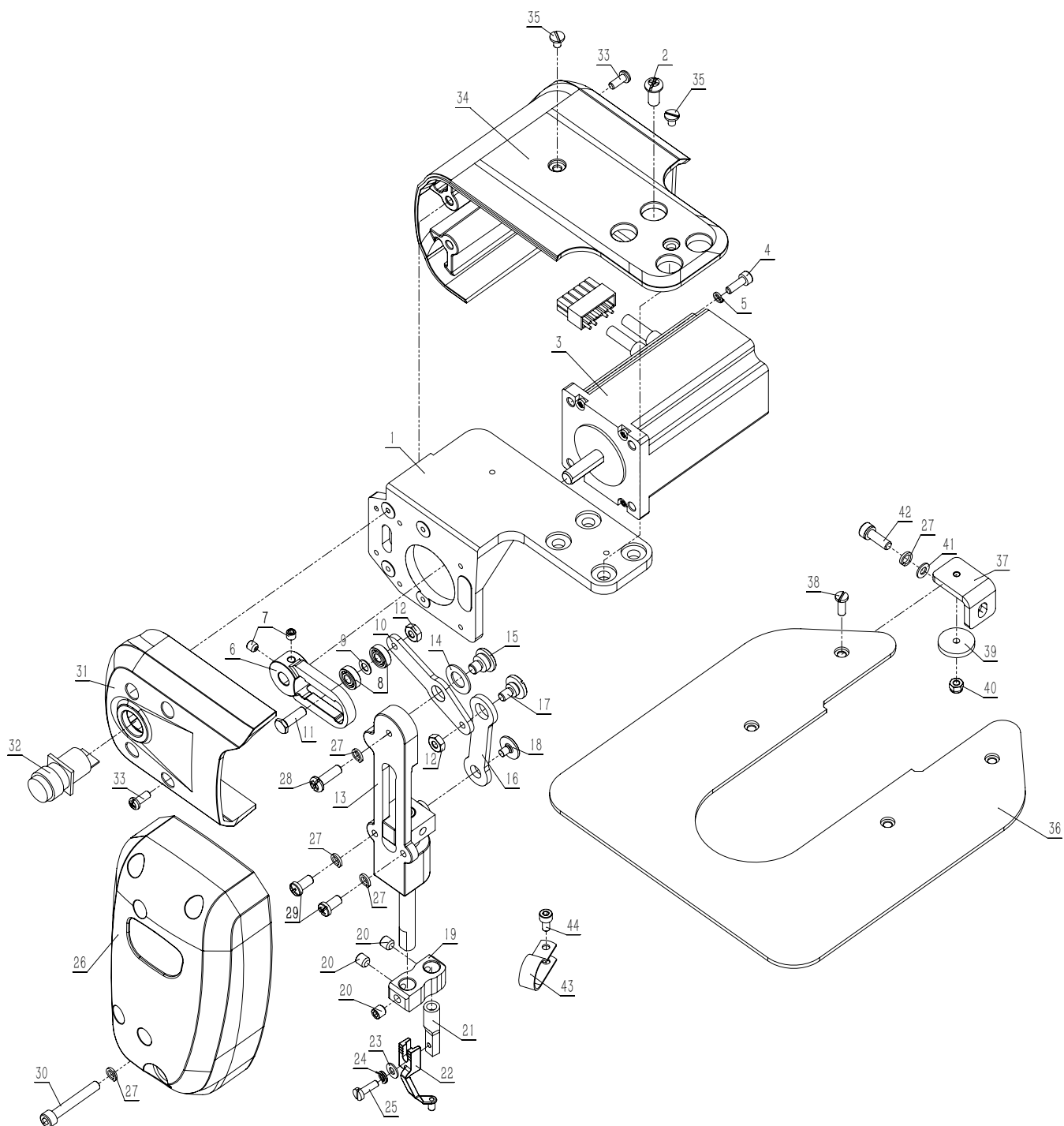
7、FEED MECHANISM COMPONENTS
送料部件



| 序号 | 注解 | 公司件号 | 名称 | DESCRIPTION | 用量 |
|------|----|-------------|----------------|-------------------------------|-----|
| 1 | | 40325603 | Y向送料轴 | Y FEED ARM | 1 |
| 2 | | 40303007 | 后衬套 | BUSHING REAR | 2 |
| 3 | | 40312092 | Y向电机固定板 | Y FEED MOTOR BASE | 1 |
| 4 | | 403S11015 | 螺钉 M4×11 | SCREW M4×11 | 2 |
| 5-1 | | 40333603 | Y向步进电机 (-B) | Y FEED MOTOR | 1 |
| 5-2 | | 40333606 | Y向步进电机 (-D) | Y FEED MOTOR | |
| 6 | | 40328016 | 防油垫 | OIL PAD | 1 |
| 7 | | 40325013 | Y向送料齿轮 | Y FEED GEAR | 1 |
| 8 | | 40128021 | 垫圈 | WASHER | 8 |
| 9 | | 403S13016 | 螺钉 M4×20 | SCREW M4×20 | 6 |
| 10 | | 403S13015 | 螺钉 M4×16 | SCREW M4×16 | 2 |
| 11 | | 403S14018 | 螺钉 M6×6 | SCREW M6×6 | 4 |
| 12 | | 4230460100 | 横向供给支架组件 | CLOTH FEED | 1 |
| 13 | | 409S14001 | 螺钉 SM1/4"×40 | SCREW SM1/4"×40 | 2 |
| 14 | | 40312618 | Y向感光片转接板 | SENSOR I NSTALLING BASE | 1 |
| 15 | | 403S11059 | 螺钉 SM11/64"×40 | SCREW SM11/64"×40 | 1 |
| 16 | | 40312617 | Y向感光片安装板 | SENSOR I NSTALLING BASE | 1 |
| 17 | | 403S11027 | 螺钉 M4×7.5 | SCREW M4×7.5 | 3 |
| 18 | | ----- | 视频传感器 Y | SENSOR Y | 1 |
| 19 | | 413S13026 | 螺钉组件 M3×8.5 | SCREW M3×8.5 | 1 |
| 20 | | 40312611 | Y向感光片 | LENGTHWISE FEED SENSOR SLIT Y | 1 |
| 21 | | 403S16015 | 螺母 SM15/64"×28 | NUT SM15/64"×28 | 1 |
| 22 | | 403S11011 | 螺钉 M4×6 | SCREW M4×6 | 5 |
| 23-1 | | 40333602 | X向步进电机 (-B) | X FEED MOTOR | 1 |
| 23-2 | | 40333602 | X向步进电机 (-D) | X FEED MOTOR | 1 |
| 24 | | 40325012 | X向供给齿轮 | X FEED GEAR | 1 |
| 25 | | 40312035 | X向感应器固定板 | SCREW | 1 |
| 26 | | ----- | 视频传感器 X | SENSOR X | 1 |
| 27 | | 403S11043 | 螺钉组件 M4×12 | SCREW M4×12 | 1 |
| 28 | | 40312139 | X向感光板 | LENGTHWISE FEED SENSOR SLIT X | 1 |
| 29-1 | | 40304602 | 供给支架底座 | CLOTH FEED PLATE | 1 |
| 29-2 | | 42304602 | 供给支架底座 | CLOTH FEED PLATE | 1 |
| 30 | | 402S30018 | 螺钉 M5×8 | SCREW M5×8 | 3 |
| 31 | | 42302002 | 摇杆轴 | FEED DRIVING ARM SHAFT | 1 |
| 32 | | 42325001 | X向供给摇杆 | CLOT FEED ARM | 1 |
| 33 | | 403S14005 | 螺钉 M6×6 | SCREW M6×6 | 2 |
| 34-1 | | 40312610 | 供给压板 | CIOTH FEED PRESSER PLATE | 1 |
| 34-2 | | 42312607 | 供给压板 | CIOTH FEED PRESSER PLATE | 1 |
| 35 | | 403S17002 | 螺钉 M4×6 | SCREW M4×6 | 6 |
| 36 | | 14030100200 | 供给架组件 | FEED BRACKET | 1 |
| 37-1 | | S05028 | 螺钉 M6×14 | SCREW M6×14 | 1 |
| 37-2 | | S05042 | 螺钉 M6×22 | SCREW M6×22 | 1 |
| 38 | | 40128014 | 垫圈 | WASHER | 1 |
| 39 | | 40315001 | 供给金属板 | FEED PLATE | 1 |
| 40 | | 403S13003 | 螺栓 M6×8 | SCREW M6×8 | 1 |
| 41 | | 40128034 | 垫圈 | WASHER | 1 |
| 42 | | 40312623 | 供给架压板 | FEED PRESSER PLATE | 1 |
| 43 | | 403S11035 | 螺钉 M3×5 | SCREW M3×5 | 2 |
| 44 | | 40109004 | 手工脚架滚珠 | WORK CLAMP FOOT MOUNTING BASE | 4 |
| 45 | | 40312612 | 支架板 | SUPPORT PLATE | 1 |
| 46 | | 413S13016 | 螺钉 M4×8 | SCREW M4×8 | 2 |
| 47-1 | | 40327027 | 弹簧 | SPRING | (2) |
| 47-2 | | 42327003 | 弹簧 | SPRING | (2) |

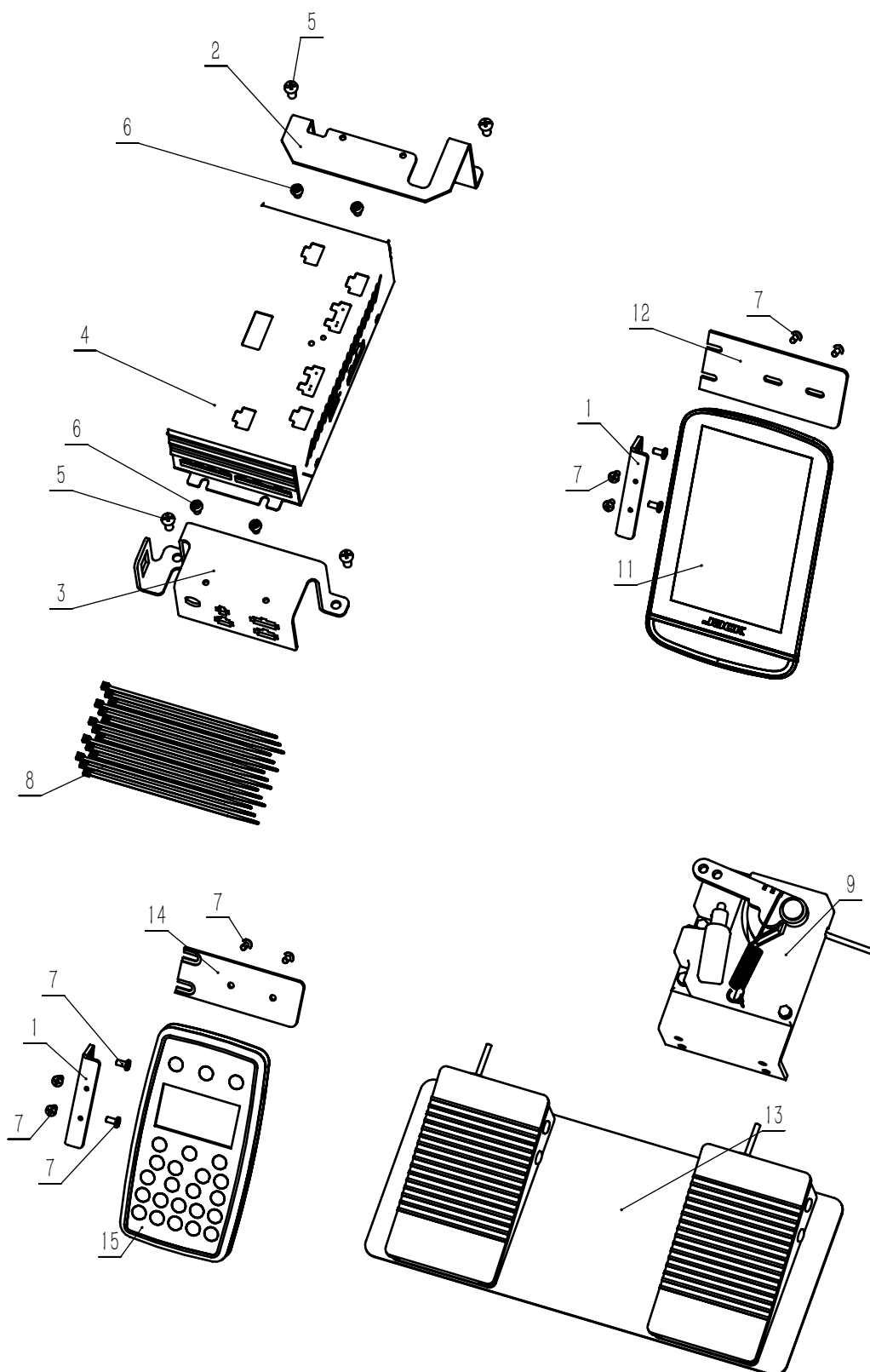
备注：42304602供给支架底座、42312607供给压板为1900GL、1906GS、1906GP专用零件；
S05042螺钉 M6×22为1900GL、1906GS、1906GP专用零件；
42327003弹簧为1906GP、1906GS专用零件；
40327027弹簧、42327003弹簧为4230460100横向供给支架组件的子零件。

8、PRESSER MECHANISM COMPONENTS 中压脚部件（1906G 专用部件）



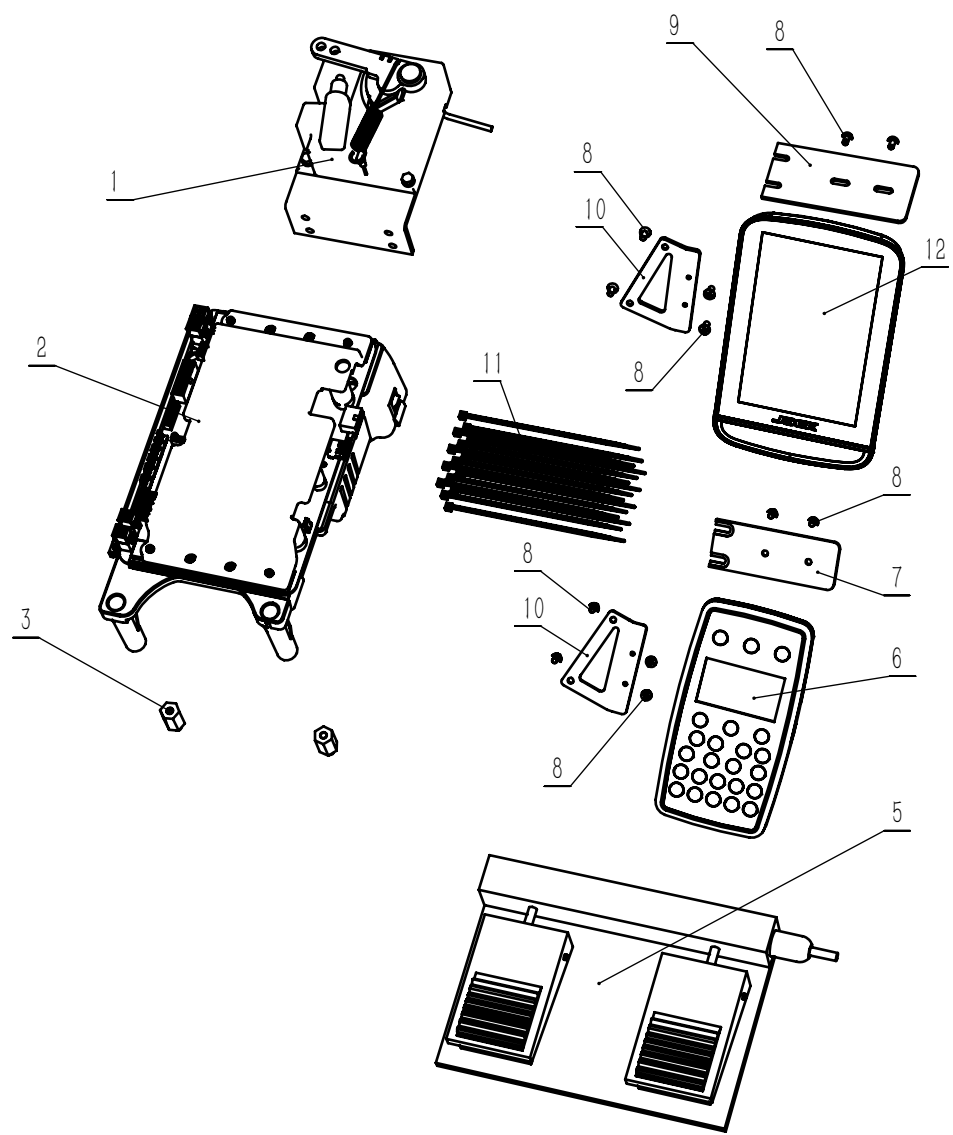
| 序号 | 注解 | 公司件号 | 名称 | DESCRIPTION | 用量 |
|------|----|------------|------------------|-------------------------------------|----|
| 1 | | 42312603 | 电机安装板 | MOTOR MOUNTING PLATE | 1 |
| 2 | | 403S11009 | 螺钉 M6×12 | SCREW M6×12 | 4 |
| 3-1 | | 42333601 | 中压脚电机 (-B) | MEDIUM PRESSURE FOOT MOTOR | 1 |
| 3-2 | | 42333602 | 中压脚电机 (-D) | MEDIUM PRESSURE FOOT MOTOR | 1 |
| 4 | | S05133 | 螺钉 M4×12 | SCREW M4×12 | 4 |
| 5 | | W02002 | 弹簧垫圈4 | WASHER SPRING | 4 |
| 6 | | 42301601 | 拨叉 | FORK | 1 |
| 7 | | S10002 | 螺钉 M5×5 | SCREW M5×5 | 2 |
| 8 | | B04020 | 深沟球轴承695ZZ | BEARING 695ZZ | 2 |
| 9 | | 42328601 | 垫片 | WASHER | 2 |
| 10 | | 42312604 | 杠杆 | LEVERAGE | 1 |
| 11 | | 423S20601 | 轴位螺钉 M5 | SHOULDER SCREW M5 | 1 |
| 12 | | 403S16006 | 六角螺母 M5 | NUT M5 | 2 |
| 13-1 | | 42302601 | 导向杆 | SWITCHING DEVICE SUPPORT | 1 |
| 13-2 | | 42309601 | 中压脚导向滑块 | SWITCHING DEVICE SUPPORT | 1 |
| 13-3 | | 4230160200 | 切换装置支架组件 | SWITCHING DEVICE SUPPORT | 1 |
| 14 | | 41728001 | 平垫圈10 | WASHER | 1 |
| 15 | | 403S20013 | 轴位螺钉 M6 | SHOULDER SCREW M6 | 1 |
| 16 | | 42312605 | 中压脚连杆 | MEDIUM PRESSURE FOOT CONNECTING ROD | 1 |
| 17 | | 403S20010 | 轴位螺钉 M5 | SHOULDER SCREW M5 | 1 |
| 18 | | 423S17601 | 螺钉 M4×6 | SCREW M4×6 | 1 |
| 19 | | 42301603 | 连接块 | CONNECTING PIECE | 1 |
| 20 | | 403S14006 | 螺钉 M6×6 | SCREW M6×6 | 3 |
| 21 | | 42302602 | 压紧杆 | PRESSER BAR | 1 |
| 22 | | 42316603 | 中压脚 | MEDIUM PRESSURE FOOT | 1 |
| 23 | | W01001 | 平垫圈4 | WASHER | 1 |
| 24 | | W02008 | 弹垫2-4 | WASHER SPRING | 1 |
| 25 | | 417S15011 | 螺钉 SM9/64"×40×12 | SCREW SM9/64"×40×12 | 1 |
| 26 | | 42301604 | 面板 | PANEL | 1 |
| | | 303597 | 面板(喷漆) | PANEL (SPRAY-PAINTED) | |
| 27 | | W02001 | 弹簧垫圈5 | WASHER SPRING | 11 |
| 28 | | 403S11026 | 螺钉 M5×16 | SCREW M5×16 | 1 |
| 29 | | 413S11002 | 螺钉 M5×10 | SCREW M5×12 | 2 |
| 30 | | 136S13001 | 螺钉 M5×35 | SCREW M5×35 | 4 |
| 31 | | 42311602 | 电机前罩 | BEFORE THE MOTOR COVER | 1 |
| 32 | | ----- | 开关 | SWITCH | 1 |
| 33 | | 403S11013 | 螺钉 M4×8 | SCREW M4×8 | 6 |
| 34 | | 42311601 | 电机后罩 | AFTER THE MOTOR COVER | 1 |
| 35 | | 403S11011 | 螺钉 M4×6 | SCREW M4×6 | 2 |
| 36 | | 42312606 | 辅助板 | AUXILIARY PLATE | 1 |
| 37 | | 42312020 | 辅助板支撑板 | AUXILIARY PLATE BRACKET | 4 |
| 38 | | 417S15003 | 螺钉 M4×6 | SCREW M4×12 | 4 |
| 39 | | 41722010 | 辅助板缓冲胶垫 | AUXILIARY PLATE CUSHION | 4 |
| 40 | | 407N01002 | 自锁螺母 | CAULKING NUT | 4 |
| 41 | | W01013 | 平垫圈 | WASHER | 4 |
| 42 | | S05004 | 螺钉 M5×14 | SCREW M5×14 | 4 |
| 43 | | 41711017 | 电线夹16 | WIRE CLIP | 4 |
| 44 | | 413S13016 | 螺钉 M4×8 | SCREW M4×8 | 4 |

9、SENSOR COMPONENTS
安全开关部件 (-D)



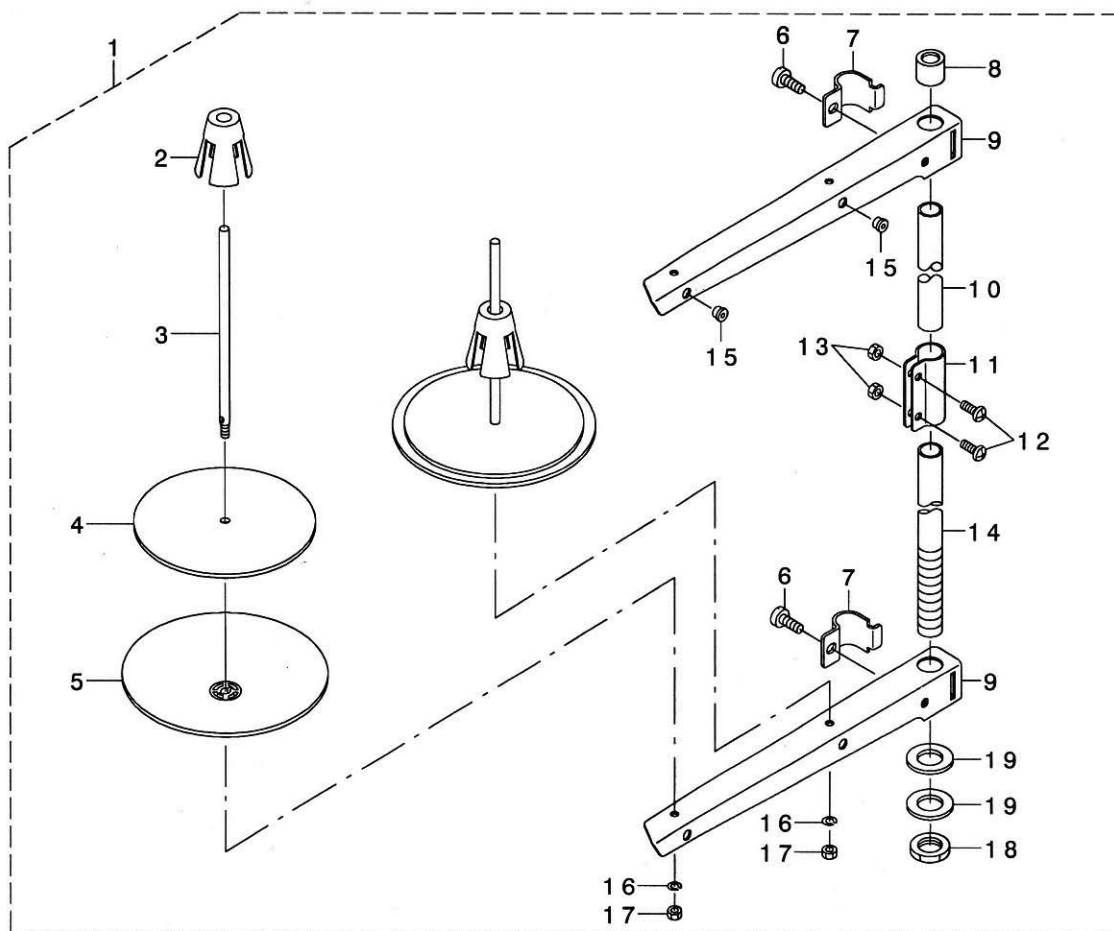
| 序号 | 注解 | 公司件号 | 名称 | DESCRIPTION | 用量 |
|----|--------|------------|-------------|-------------------------------------|----|
| 1 | | 40312619 | 操作面板支架1 | OPERATION PANEL BRACKET 1 | 1 |
| 2 | | 40312625 | 电控安装架(上) | ELECTRIC CONTROL MOUNTING BRACKET 1 | 1 |
| 3 | | 40312626 | 电控安装架(下) | ELECTRIC CONTROL MOUNTING BRACKET 2 | 1 |
| 4 | | 4033161600 | 一体机电控(-D闭环) | ELECTRIC CONTROL (-D) | 1 |
| 5 | | 403S11009 | 螺钉 | SCREW | 4 |
| 6 | | S04028 | 螺钉 | SCREW | 4 |
| 7 | | 403S11013 | 螺钉 | SCREW | 6 |
| 8 | | 40111005 | 线扣 | TIE BAND | 15 |
| 9 | | 40331617 | 单脚踏(-D) | SINGLE PEDAL SWITCH (-D) | 1 |
| 11 | | 40331621 | 触摸屏(-D) | TOUCH SCREEN (-D) | 1 |
| 12 | | 42312620 | 液晶屏安装支架 | TOUCH SCREEN MOUNTING BRACKET | 1 |
| 13 | | 40331618 | 双踏板(-D) | DOUBLE PEDAL SWITCH (-D) | 1 |
| 14 | | 40312620 | 操作面板支架2 | OPERATION PANEL BRACKET 2 | 1 |
| 15 | | 140333002 | 点阵屏 | DOT MATRIX SCREEN | 1 |
| 16 | | 140330013 | 线材包 | WIRE STOCK | 1 |
| 16 | 1906专用 | 142330005 | 线材包 | WIRE STOCK | 1 |

9、SENSOR COMPONENTS
安全开关部件 (-B)



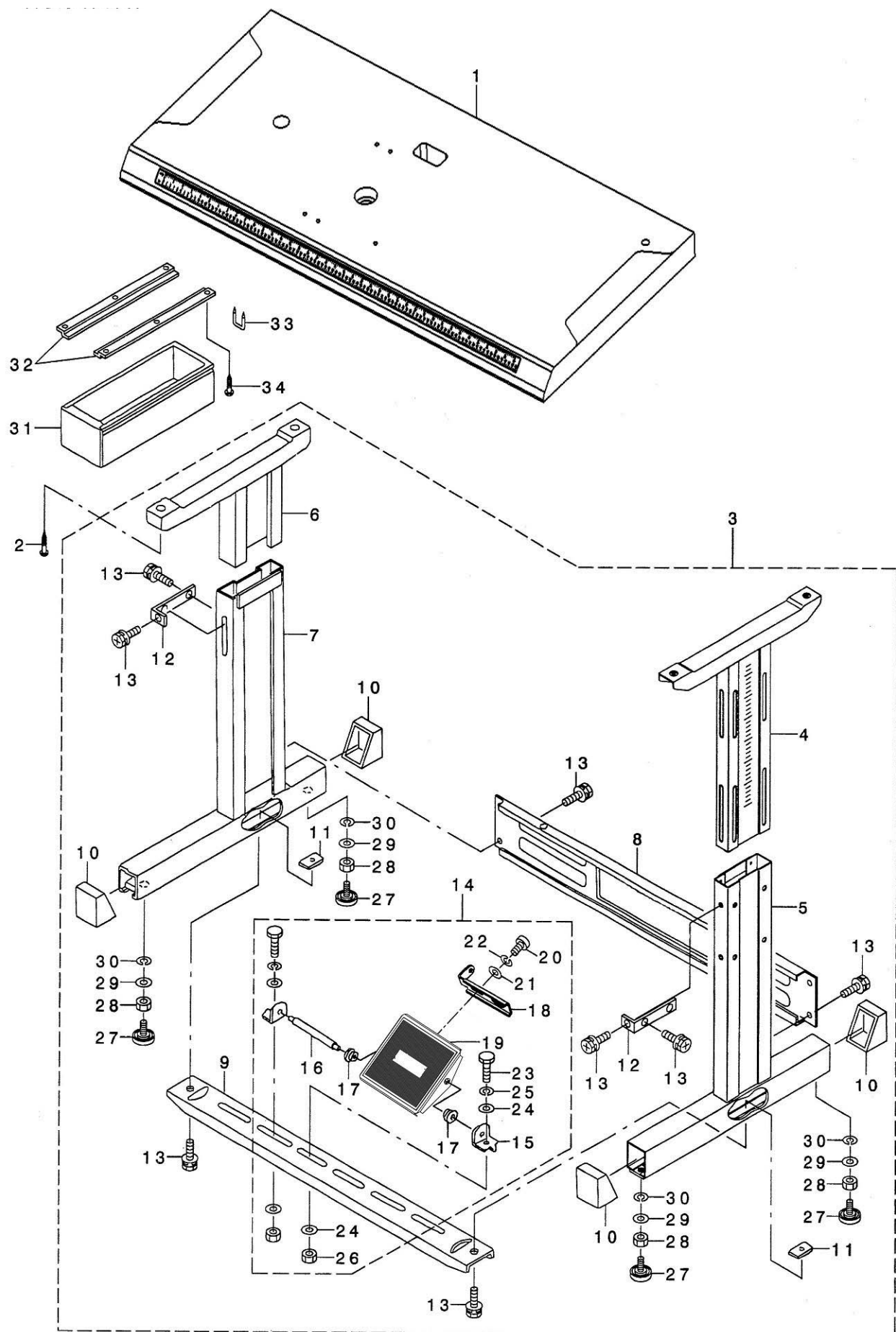
| 序号 | 注解 | 公司件号 | 名称 | DESCRIPTION | 用量 |
|-----|----|------------|-------------|-------------------------------|----|
| 1 | | - | 单脚踏 (-B) | SINGLE PEDAL SWITCH (-B) | 1 |
| 2-1 | | 4033160400 | 一体机电控 (-点阵) | ELECTRIC CONTROL | 1 |
| 2-2 | | 4033162000 | 一体机电控 (-触摸) | ELECTRIC CONTROL | 1 |
| 3 | | 403S30602 | 电控垫高螺钉 | SCREW | 2 |
| 5 | | 40331606 | 双踏板 (-B) | DOUBLE PEDAL SWITCH (-B) | 1 |
| 6 | | - | 点阵屏 | DOT MATRIX SCREEN | 1 |
| 7 | | 40312620 | 操作面板支架2 | OPERATION PANEL BRACKET 2 | 1 |
| 8 | | 403S11013 | 螺钉 | SCREW | 6 |
| 9 | | 42312620 | 液晶屏安装支架 | TOUCH SCREEN MOUNTING BRACKET | 1 |
| 10 | | 40312619 | 操作面板支架1 | OPERATION PANEL BRACKET 1 | 1 |
| 11 | | 40111005 | 线扣 | TIE BAND | 15 |
| 12 | | 40331620 | 触摸屏 (-B) | TOUCH SCREEN (-B) | 1 |

10、THREAD STAND COMPONENTS
线架部件



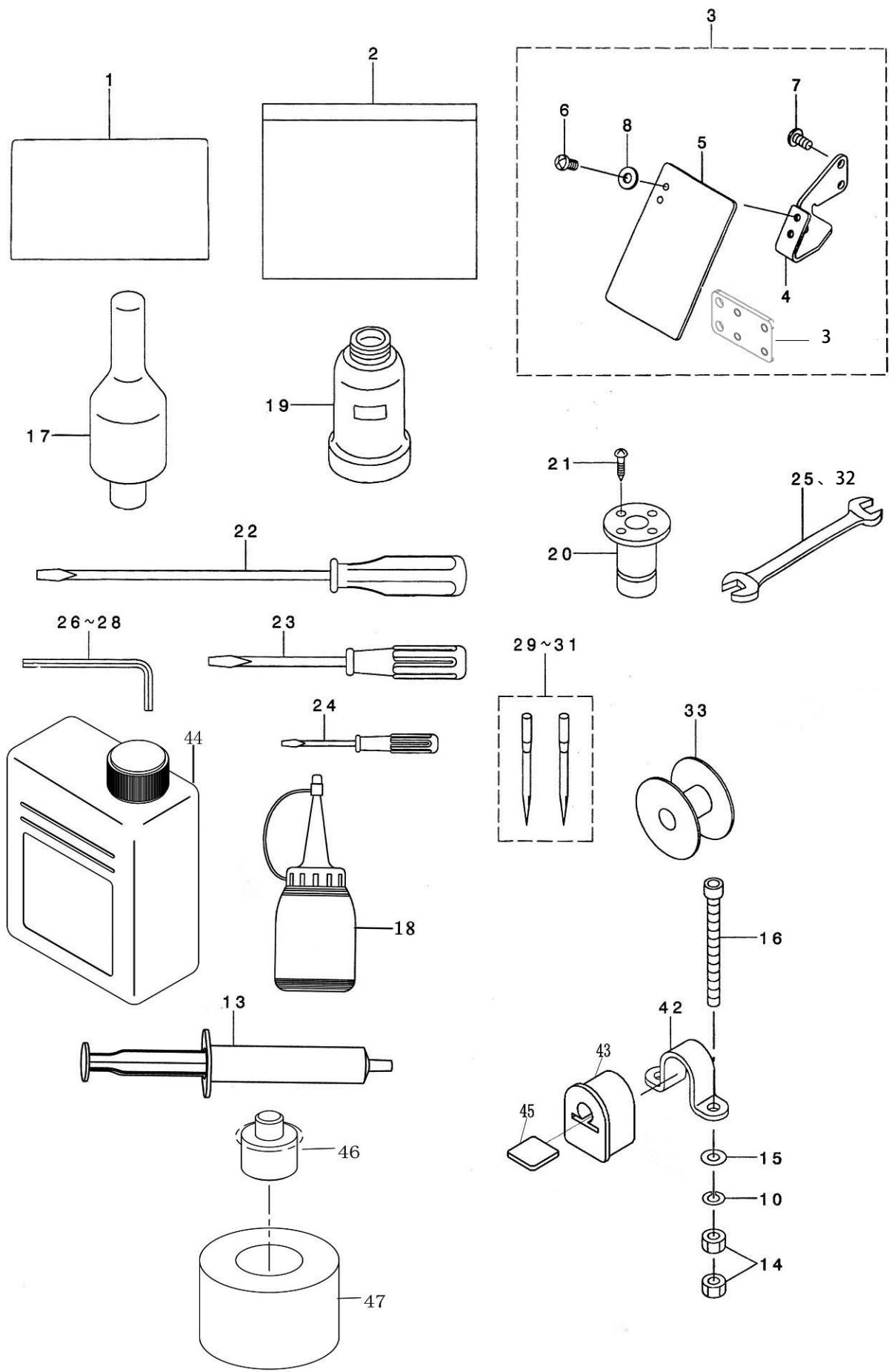
| REF. NO | NOTE | PART NO. | 名 称 | DESCRIPTION | Qty |
|---------|------|------------|---------|---------------------------|-----|
| 1 | | 1383100300 | 过线架组件 | THREAD STAND ASM. | 1 |
| 2 | | ----- | 线架缓冲支架 | SPOOL RETAINER | (2) |
| 3 | | ----- | 线轴 | SPOOL PIN | (2) |
| 4 | | ----- | 线盘软垫 | SPOOL REST CUSHION | (2) |
| 5 | | ----- | 线盘 | SPOOL REST | (2) |
| 6 | | ----- | 螺钉 | SCREW M6 L=16 | (2) |
| 7 | | ----- | 过线架固定夹 | THREAD GUIDE ARM JOINT | (2) |
| 8 | | ----- | 线架支撑套 | SPOOL REST ROD RUBBER CAP | (1) |
| 9 | | ----- | 线架 | SPOOL REST ARM | (2) |
| 10 | | ----- | 线架支撑管 1 | SPOOL REST ROD, UPPER | (1) |
| 11 | | ----- | 支撑管接头 | SPOOL REST ROD JOINT | (1) |
| 12 | | ----- | 螺钉 | SCREW M5 L=14 | (2) |
| 13 | | ----- | 螺母 | NUT M5 | (2) |
| 14 | | ----- | 线架支撑管 2 | SPOOL REST ROD, LOWER | (1) |
| 15 | | ----- | 过线套 | THREAD GUIDE | (2) |
| 16 | | ----- | 弹簧垫圈 | SPRING WASHER | (2) |
| 17 | | ----- | 螺母 | NUT M5 | (2) |
| 18 | | ----- | 螺母 | NUT M16X1.5 | (1) |
| 19 | | ----- | 垫片 | WASHER 17X30X2.6 | (2) |

11、TABLE STAND COMPONENTS
台板机架部件



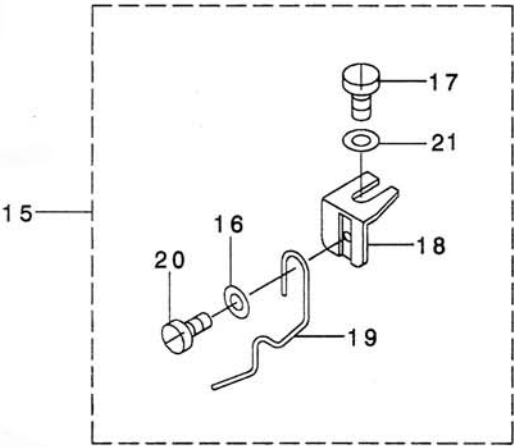
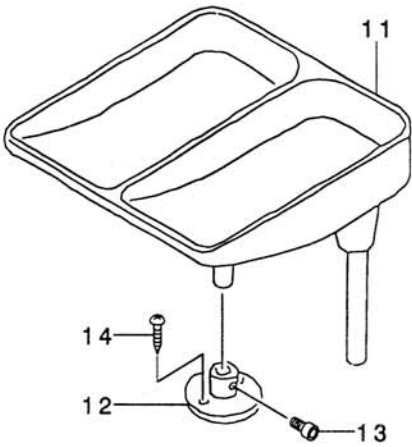
| 序号 | 注解 | 公司件号 | DESCRIPTION | 名称 | 用量 | 同类编号 |
|-----|----|------------|-------------------------------|---------|------|---------------|
| 1-1 | | - - - - - | TABLE | 台板 | 1 | 400-06886 |
| 1-2 | GR | 140532001 | TABLE | 台板 | 1 | 400-06886 |
| 2 | | - - - - - | WOOD SCREW D=5.1 L=32 | 自攻螺丝 | 4 | SK-3515201-SE |
| 3-1 | 普通 | - - - - - | T-STAND COMPL | 桌脚组件 | 1 | 141-18053 |
| 3-2 | GR | 4053200200 | T-STAND COMPL | 桌脚组件 | 1 | 141-18053 |
| 4 | | - - - - - | UPPER STAND ASM., RIGHT | 右桌脚上支架 | 1 | 141-18152 |
| 5 | | - - - - - | STAND ASM., RIGHT | 右桌脚下支架 | (1) | 141-18151 |
| 6 | | - - - - - | UPPER STAND ASM., LEFT | 左桌脚上支架 | (1) | B8101-210-AAB |
| 7 | | - - - - - | STAND ASM., LEFT | 左桌脚下支架 | (1) | B8105-210-AAA |
| 8 | | - - - - - | STAND SIDE SUPPORT | 桌脚横撑 | (1) | 111-58300 |
| 9 | | - - - - - | STAND SIDE SUPPORT | 桌脚横撑 | (1) | 111-58409 |
| 10 | | - - - - - | RUBBER CAP | 橡胶套 | (4) | 111-58607 |
| 11 | | - - - - - | NUT | 螺母 | (2) | 170-07402 |
| 12 | | - - - - - | UPPER STAND PLATE | 调节压板 | (2) | 111-58516 |
| 13 | | - - - - - | WASHER HEXAGONAL BOLT | 螺钉 | (12) | SL-9082091-SE |
| 14 | | - - - - - | Z-STAND PEDAL ASM | 踏板组件 | (1) | 138-17754 |
| 15 | | - - - - - | PEDAL SHAFT BRACKET | 踏板支架 | (2) | 111-59001 |
| 16 | | - - - - - | PEDAL CONNECTING ROD | 踏板连接轴 | (1) | B8153-771-000 |
| 17 | | - - - - - | PEDAL BUSHING | 踏板轴衬 | (2) | D8113-555-B00 |
| 18 | | - - - - - | PEDAL ADJUSTING PLATE | 踏板调节板 | (1) | GPF-06080000 |
| 19 | | - - - - - | PEDAL ASM. | 踏板 | (1) | GPF-060600A0 |
| 20 | | - - - - - | SCREW M6 L=12 | 螺钉M6×12 | (2) | SM-9061203-SE |
| 21 | | - - - - - | WASHER 6.7×13×1 | 垫片 | (2) | WP-0671016-SE |
| 22 | | - - - - - | SPRING WASHER 6.2×11.4×1.2 | 弹簧垫片 | (2) | WS-0621210-KR |
| 23 | | - - - - - | SCREW M8 L=20 | 螺钉M8×20 | (2) | SM-9082023-SE |
| 24 | | - - - - - | WASHER 8.7×18×1.6 | 垫片 | (4) | WP-0871602-SE |
| 25 | | - - - - - | SPRING WASHER 8.6×15×1.4 | 弹簧垫片 | (2) | WS-0861410-KR |
| 26 | | - - - - - | NUT M8 | 螺母 | (2) | NM-6080721-SE |
| 27 | | - - - - - | ADJUSTING SCREW ASM. WITH CAP | 带垫调节螺钉 | (4) | B8108-555-0A0 |
| 28 | | - - - - - | NUT M12 | 螺母M12 | (4) | NM-6120001-SE |
| 29 | | - - - - - | WASHER M12 | 垫片 | (4) | WP-1302501-SE |
| 30 | | - - - - - | SPRING WASHER 12.5×21.5×3 | 弹簧垫片 | (4) | WS-1253010-KN |
| 31 | | - - - - - | DRAWER | 抽屉 | 1 | 111-55108 |
| 32 | | - - - - - | DRAWER SUPPORT | 抽屉支架 | 2 | 111-55207 |
| 33 | | - - - - - | DRAWER STOPPER | 抽屉挡板 | 1 | D8204-555-D00 |
| 34 | | - - - - - | WOOD SCREW D=3.1 L=16 | 木螺钉 | 6 | SK-3311601-SE |

12、ACCESSORIE PART COMPONENTS
附件部件



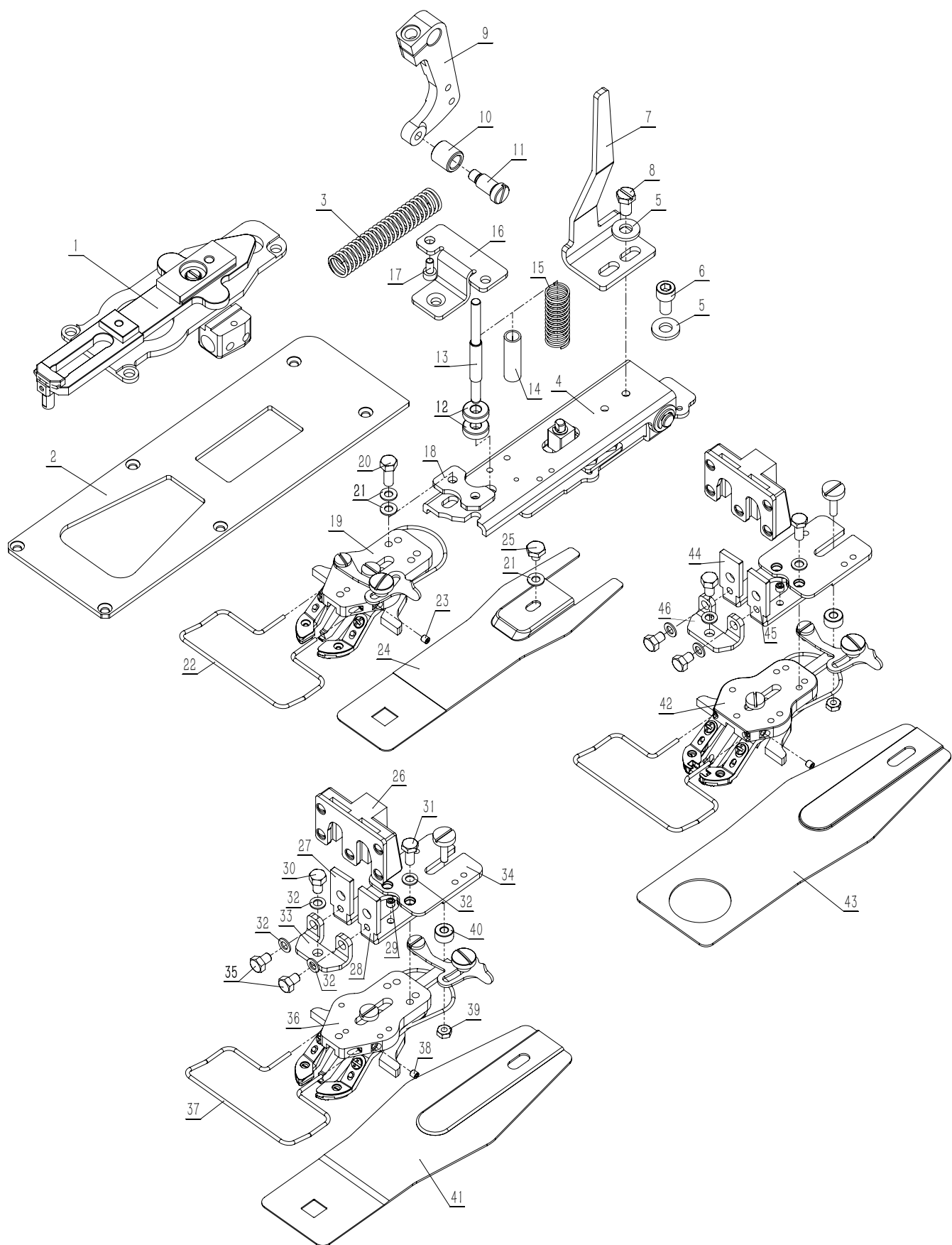
| 序号 | 注解 | 公司件号 | DESCRIPTION | 名称 | 用量 |
|----|----|------------|----------------------------|-------------|----|
| 1 | | 40331612 | HEAD-COVER | 机头罩 | 1 |
| 2 | | ----- | SAFETY PLATE ASM | 防护罩组件 | 1 |
| 3 | | 40312621 | SAFETY PLATE TRANSFER | 防护罩转接板 | 1 |
| 4 | | 40312127 | SAFETY PLATE BASE | 防护罩安装板 | 1 |
| 5 | | 40911006 | SAFETY PLATE | 防护罩 | 1 |
| 6 | | 403s11051 | SCREW M4 L=6 | 螺钉 | 2 |
| 8 | | 40928002 | WASHER 4.5X10X0.8 | 垫圈 | 2 |
| 10 | | 40128026 | SPRING WASHER 6.1X12.2X1.5 | 弹簧垫片 | 5 |
| 13 | | 11411029 | GREASE-B-TUBE | 润滑脂 | 1 |
| 14 | | N01007 | NUT M6 | 螺母 | 10 |
| 15 | | 140628001 | WASHER | 垫片 | 5 |
| 16 | | 40931009 | BOLT M6 L=60 | 螺栓 | 5 |
| 17 | | 40311002 | HEAD SUPPORT BAR | 机头支撑柱 | 1 |
| 18 | | 20131038 | OILER (CONTAINING) | 油壶 | 1 |
| 19 | | 40311011 | OIL CAN | 回油油壶 | 1 |
| 20 | | 40311010 | OIL MANAGEMENT | 油壶接头 | 1 |
| 21 | | 403s30015 | WOOD SCREW D=3.1 L=16 | 木螺钉 | 4 |
| 22 | | 10131002 | SCREW DRIVER, LARGE | 大螺丝刀 | 1 |
| 23 | | 10131003 | SCREW DRIVER, MIDDLE | 中螺丝刀 | 1 |
| 24 | | 10131004 | SCREW DRIVER, SMALL | 小螺丝刀 | 1 |
| 25 | | 40931025 | WRENCH (9-11) | 扳手 | 1 |
| 26 | | 30131010 | HEXAGONAL WRENCH, SMALL | 小内六角扳手 | 1 |
| 27 | | 20131047 | HEXAGONAL WRENCH, LARGE | 大内六角扳手 | 1 |
| 28 | | 30131012 | HEXAGONAL SPANNER | 中内六角扳手 | 1 |
| 29 | | 40117001 | NEEDLE DPX5 #16 | 机针DPx5 #16 | 4 |
| | | ----- | NEEDLE DPX17 #19 | 机针DPx17 #19 | 4 |
| | | ----- | NEEDLE DPX5 #11 | 机针DPx5 #11 | 4 |
| 31 | | ----- | NEEDLE DPX17 #14 | 机针DPX17 #14 | 4 |
| 32 | | 30131006 | WRENCH (8-10) | 扳手 | 1 |
| 33 | | 40118004 | BOBBIN | 梭心 | 3 |
| 34 | | 403S10010 | BOLT M6 L=60 | 螺栓 | 1 |
| 42 | | 40312001 | BED HINGE | 铰接板 | 2 |
| 43 | | 40322003 | HINGE RUBBER | 铰接板橡胶座 | 2 |
| 44 | | 1011101200 | OILER (CONTAINING) | 油壶 | 1 |
| 45 | | 40312320 | SUPPORT PLATE | 支撑板 | 2 |
| 46 | | 403S30601 | MATS SCREW | 脚垫螺钉 | 3 |
| 47 | | 40322608 | MATS | 脚垫 | 3 |

13、ACCESSORIES PARTS FOR 1903G SUBBCLASSES
1903G 附件



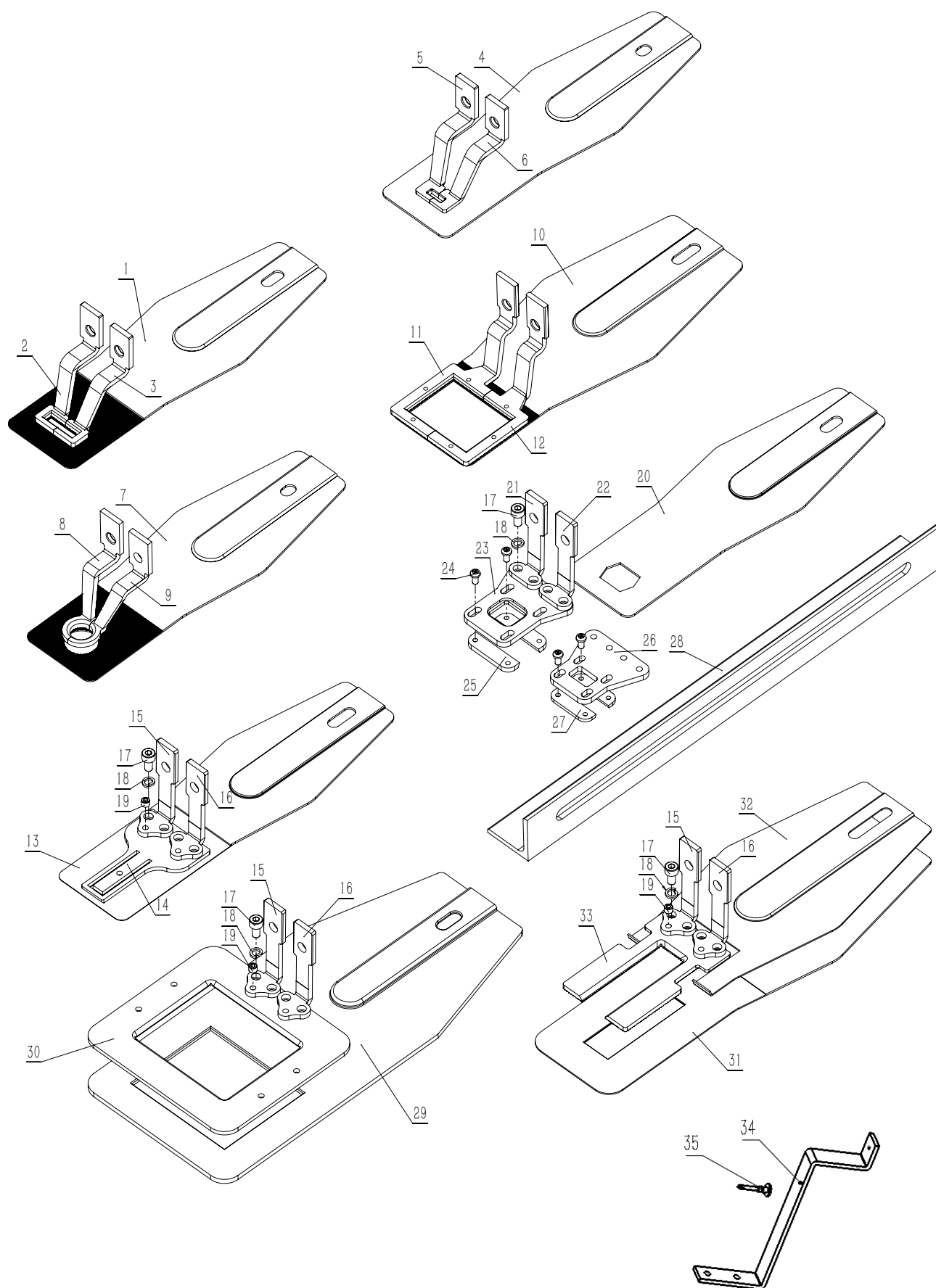
| 序号 | 注解 | 公司件号 | DESCRIPTION | 名称 | 用量 |
|----|----|------------|-----------------------|-----------------|----|
| 11 | | 4091102000 | BUTTON TRAY ASM | 纽扣盘 | 1 |
| 12 | | 300941 | BUTTON TRAY BASE | 纽扣盘固定座 | 1 |
| 13 | | s10009 | SCREW M6 L=8 | 螺钉M6X8 | 1 |
| 14 | | 403s30014 | WOODSCREW D=4.1 L=12 | 木螺钉 | 2 |
| 15 | | ----- | BUTTON RISING BAR ASM | 松线板组件 | 1 |
| 16 | | 40128021 | WASHER 4.8X11.5X2 | 垫圈4.8X11.5X2 | 2 |
| 17 | | 405s11008 | SCREW 3/16-32 L=6.5 | 螺钉3/16-32 L=6.5 | 1 |
| 18 | | 40512020 | INSTALLING BASE | 安装板 | 1 |
| 19 | | 40527017 | BUTTON RISING BAR | 纽扣松紧板 | 1 |
| 20 | | 301s11014 | SCREW | 螺钉 | 1 |
| 21 | | 40928021 | WASHER 4X8X1.2 | 垫圈4X8X1.2 | 2 |

14、EXCLUSIVE PARTS FOR 1903G
1903G 专用部件



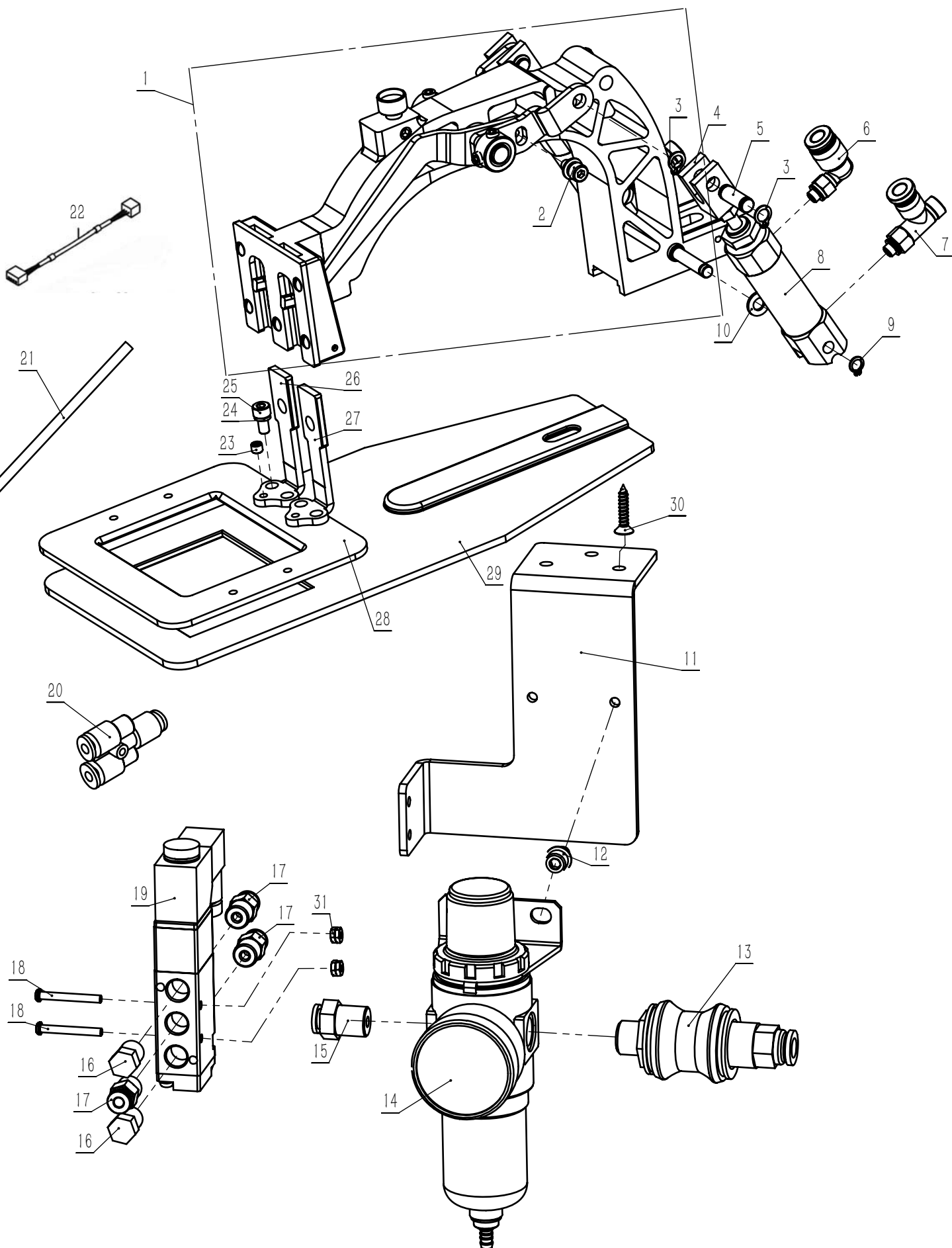
| 序号 | 注解 | 公司件号 | 名称 | DESCRIPTION | 用量 |
|-----------|----|-------------|----------------|---------------------------------|----|
| 1903GS专用 | | | | | |
| 1 | | 14051200600 | 横向供给支架组件 | CLOTH FEED | 1 |
| 2 | | 40512602 | 供给压板 | CLOTH FEED PRESSER PLATE | 1 |
| 3 | | 40527005 | 弹簧 | SPRING | 1 |
| 4 | | 4052800300 | 爪脚提升板组件 | FOOT LIFT PLATE | 1 |
| 5 | | 40128014 | 垫圈 | WASHER | 2 |
| 6 | | 413S13023 | 螺钉 M6×12 | SCREW M6×12 | 1 |
| 7 | | 140512005 | 控制提升板 | CONTROL PANEL | 1 |
| 8 | | 405S12002 | 螺钉 SM15/64"×28 | SCREW SM15/64"×28 | 2 |
| 9 | | 40504005 | 曲柄 | CRANK | 1 |
| 10 | | 40503020 | 滚筒 | ROLLER | 1 |
| 11 | | 405S20001 | 螺钉 SM15/64"×28 | SCREW SM15/64"×28 | 1 |
| 12 | | 405S16001 | 滚花螺母 | KNURLED NUT | 2 |
| 13 | | 405S30004 | 调节螺柱 | ADJUST THE STUD | 1 |
| 14 | | 40503002 | 轴套 | SHAFT SLEEVE | 1 |
| 15 | | 40527015 | 弹簧 | SPRING | 1 |
| 16 | | 40512007 | 安装板 | MOUNTING PLATE | 1 |
| 17 | | 413S13016 | 螺钉 M4×8 | SCREW M4×8 | 2 |
| 18 | | 40512010 | 安装板 | MOUNTING PLATE | 1 |
| 19 | | 4051601200 | 纽钳组件 | TOGGLE CLAMP | 1 |
| 20 | | 409S12001 | 螺钉 SM3/16"×32 | SCREW SM3/16"×32 | 2 |
| 21 | | W01013 | 垫片 | WASHER | 5 |
| 22 | | 40527016 | 护手 | HAND GUARD | 1 |
| 23 | | 405S15001 | 螺钉 SM9/64"×40 | SCREW SM9/64"×40 | 2 |
| 24 | | 40515005 | 送料板 | FEED PLATE | 1 |
| 25 | | 405S12003 | 螺钉 SM11/64"×40 | SCREW SM11/64"×40 | 1 |
| 1903GSK专用 | | | | | |
| 26 | | 40501202 | 钉扣转接头 | CLOTH FEED | 1 |
| 27 | | 40516202 | 左压脚 | LEFT PRESSER FOOT | 1 |
| 28 | | 40516201 | 右压脚 | RIGHT PRESSER FOOT | 1 |
| 29 | | 409S14002 | 螺钉 SM11/64"×40 | SCREW SM11/64"×40 | 2 |
| 30 | | 405S11009 | 螺钉 SM3/16"×32 | SCREW SM3/16"×32 | 1 |
| 31 | | 405S11202 | 螺钉 SM3/16"×32 | SCREW SM3/16"×32 | 2 |
| 32 | | 40928005 | 垫圈 | WASHER | 5 |
| 33 | | 40512201 | 辅助板 | THE AUXILIARY PLATE | 1 |
| 34 | | 40512212 | 调节扳手安装板 | ADJUSTING WRENCH MOUNTING PLATE | 1 |
| 35 | | 405S11008 | 螺钉 SM3/16"×32 | SCREW SM3/16"×32 | 2 |
| 36 | | 4051601300 | 纽钳组件 | TOGGLE CLAMP | 1 |
| 37 | | 40527016 | 护手 | HAND GUARD | 1 |
| 38 | | 405S15001 | 螺钉 SM9/64"×40 | SCREW SM9/64"×40 | 2 |
| 39 | | N01024 | 螺母 M4 | NUT M4 | 1 |
| 40 | | 40528201 | 垫片 | WASHER | 1 |
| 41 | | 40515201 | 送料板 | FEED PLATE | 1 |
| 1903GAK专用 | | | | | |
| 26 | | 40501202 | 钉扣转接头 | CLOTH FEED | 1 |
| 44 | | 40516012 | 左压脚 | LEFT PRESSER FOOT | 1 |
| 45 | | 40516013 | 右压脚 | RIGHT PRESSER FOOT | 1 |
| 29 | | 409S14002 | 螺钉 SM11/64"×40 | SCREW SM11/64"×40 | 2 |
| 30 | | 409S11005 | 螺钉 | SCREW SM3/16"×32 | 1 |
| 31 | | 405S11202 | 螺钉 SM3/16"×32 | SCREW SM3/16"×32 | 2 |
| 32 | | 40928005 | 垫圈 | WASHER | 5 |
| 46 | | 40512021 | 辅助板 | THE AUXILIARY PLATE | 1 |
| 34 | | 40512212 | 调节扳手安装板 | ADJUSTING WRENCH MOUNTING PLATE | 1 |
| 35 | | 405S11008 | 螺钉 SM3/16"×32 | SCREW SM3/16"×32 | 2 |
| 37 | | 40527016 | 护手 | HAND GUARD | 1 |
| 38 | | 405S15001 | 螺钉 SM9/64"×40 | SCREW SM9/64"×40 | 2 |
| 39 | | N01024 | 螺母 M4 | NUT M4 | 1 |
| 40 | | 40528201 | 垫片 | WASHER | 1 |
| 42 | | 4051601800 | 纽钳组件 | TOGGLE CLAMP | 1 |
| 43 | | 40315007 | 送料板 | HAND GUARD | 1 |

15、FOOT PRESS LIST
压脚清单



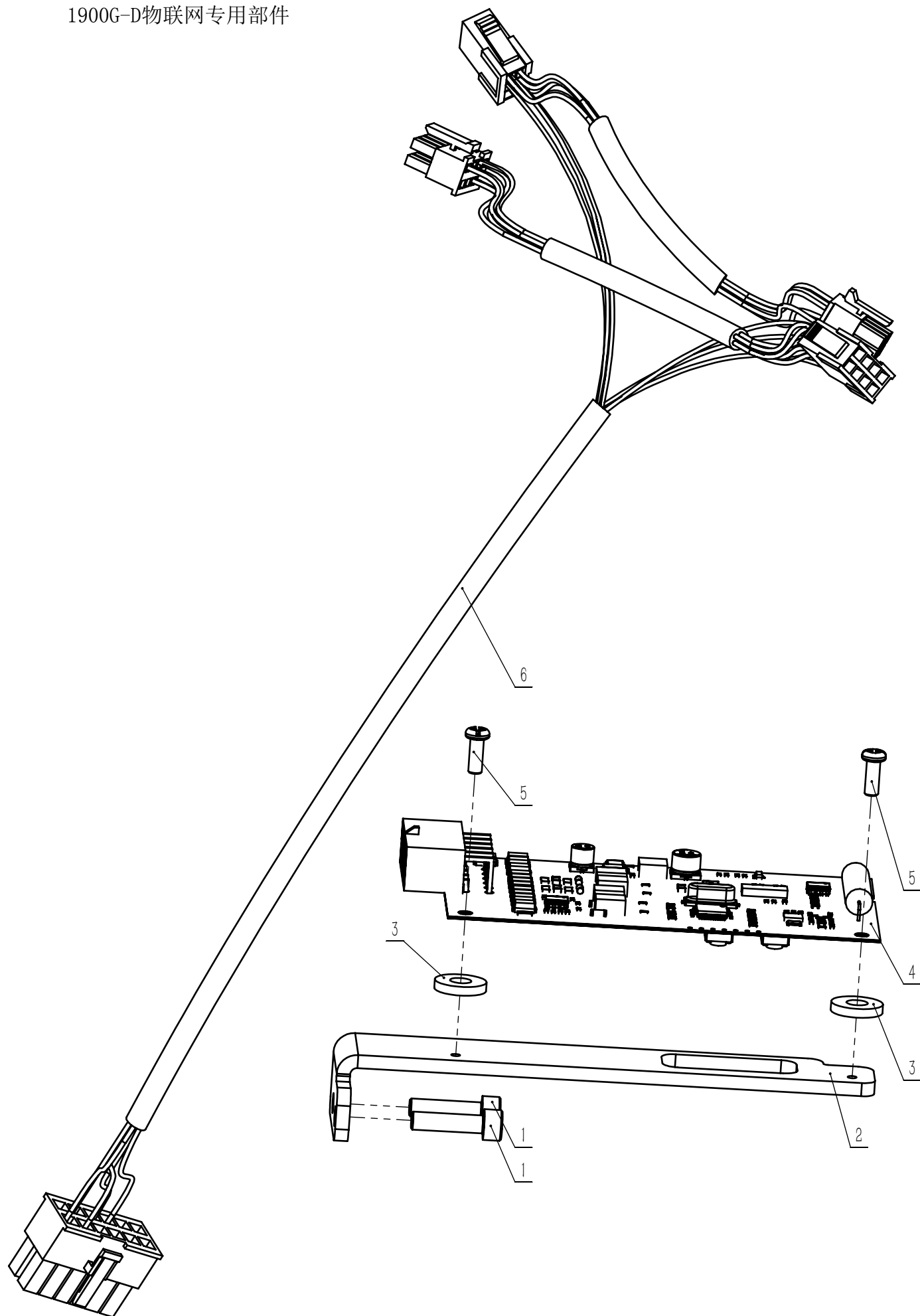
| 序号 | 注解 | 公司件号 | 名称 | DESCRIPTION | 用量 |
|--------|----|------------|----------------|-----------------------------------|----|
| 1900GH | | | | | |
| 1 | | 40315002 | 送料板 | FEED PLATE | 1 |
| 2 | | 40316001 | 左压脚 | LEFT PRESSER FOOT | 1 |
| 3 | | 40316002 | 右压脚 | RIGHT PRESSER FOOT | 1 |
| 1900GM | | | | | |
| 4 | | 40315026 | 送料板 | FEED PLATE | 1 |
| 5 | | 40316036 | 左压脚 | LEFT PRESSER FOOT | 1 |
| 6 | | 40316035 | 右压脚 | RIGHT PRESSER FOOT | 1 |
| 1900GY | | | | | |
| 7 | | 40315005 | 送料板 | FEED PLATE | 1 |
| 8 | | 4031600300 | 圆形压脚组件 | LEFT PRESSER FOOT | 1 |
| 9 | | | | RIGHT PRESSER FOOT | 1 |
| 1900GX | | | | | |
| 10 | | 140315006 | 送料板 | FEED PLATE | 1 |
| 11 | | 140316003 | 左压脚 | LEFT PRESSER FOOT | 1 |
| 12 | | 140316004 | 右压脚 | RIGHT PRESSER FOOT | 1 |
| 1900GL | | | | | |
| 13 | | 40315035 | 送料板 | FEED PLATE | 1 |
| 14 | | 140315002 | 压脚板 | PRESSER FOOT PLATE | 1 |
| 15 | | 40316034 | 左压脚架 | LEFT PRESSER FOOT RACK | 1 |
| 16 | | 40316033 | 右压脚架 | RIGHT PRESSER FOOT RACK | 1 |
| 17 | | 413S13003 | 螺钉 M4×6 | SCREW M4×6 | 4 |
| 18 | | W02002 | 弹垫 | SPRING WASHER | 4 |
| 19 | | 409S14002 | 螺钉 SM11/64″×40 | SCREW SM11/64″×40 | 2 |
| 1900GN | | | | | |
| 17 | | 413S13003 | 螺钉 M4×6 | SCREW M4×6 | 4 |
| 18 | | W02002 | 弹垫 | SPRING WASHER | 4 |
| 20 | | 40515036 | 送料板 | FEED PLATE | 1 |
| 21 | | 42316001 | 左压脚架 | LEFT PRESSER FOOT RACK | 1 |
| 22 | | 42316002 | 右压脚架 | RIGHT PRESSER FOOT RACK | 1 |
| 23 | | 40316049 | 通用压脚块(大) | PRESSER FOOT BLOCK(BIG) | 1 |
| 24 | | 403S11020 | 螺钉 M3×6 | SCREW M3×6 | 8 |
| 25 | | 40316051 | 压脚辅助块(大) | PRESSER FOOT SUPPORT BLOCK(BIG) | 2 |
| 26 | | 40616050 | 通用压脚块(小) | PRESSER FOOT BLOCK(SMALL) | 1 |
| 27 | | 40316052 | 压脚辅助块(小) | PRESSER FOOT SUPPORT BLOCK(SMALL) | 2 |
| 28 | | 40316053 | 角铁 | ANGLE IRON | 1 |
| 34 | | 40316054 | 支架 | SUPPORT | 2 |
| 35 | | 40326043 | 销子 | DOWEL | 2 |
| 1906GS | | | | | |
| 15 | | 40316034 | 左压脚架 | LEFT PRESSER FOOT RACK | 1 |
| 16 | | 40316033 | 右压脚架 | RIGHT PRESSER FOOT RACK | 1 |
| 17 | | 413S13003 | 螺钉 M4×6 | SCREW M4×6 | 4 |
| 18 | | W02002 | 弹垫 | SPRING WASHER | 4 |
| 19 | | 409S14002 | 螺钉 SM11/64″×40 | SCREW SM11/64″×40 | 2 |
| 29 | | 42315601 | 送料板(50×60) | FEED PLATE(50×60) | 1 |
| 30 | | 42316601 | 压脚板(50×60) | PRESSER FOOT PLATE(50×60) | 1 |
| 1906GP | | | | | |
| 15 | | 40316034 | 左压脚架 | LEFT PRESSER FOOT RACK | 1 |
| 16 | | 40316033 | 右压脚架 | RIGHT PRESSER FOOT RACK | 1 |
| 17 | | 413S13003 | 螺钉 M4×6 | SCREW M4×6 | 4 |
| 18 | | W02002 | 弹垫 | SPRING WASHER | 4 |
| 19 | | 409S14002 | 螺钉 SM11/64″×40 | SCREW SM11/64″×40 | 2 |
| 31 | | 42315603 | 送料板 | FEED PLATE | 1 |
| 32 | | 42315602 | 送料压板 | FEE DPRESSER FOOT | 1 |
| 33 | | 142316001 | 压脚板(50×12) | PRESSER FOOT PLATE(50×12) | 1 |

16、EXCLUSIVE PARTS FOR 1906GHQ
1906GHQ专用部件



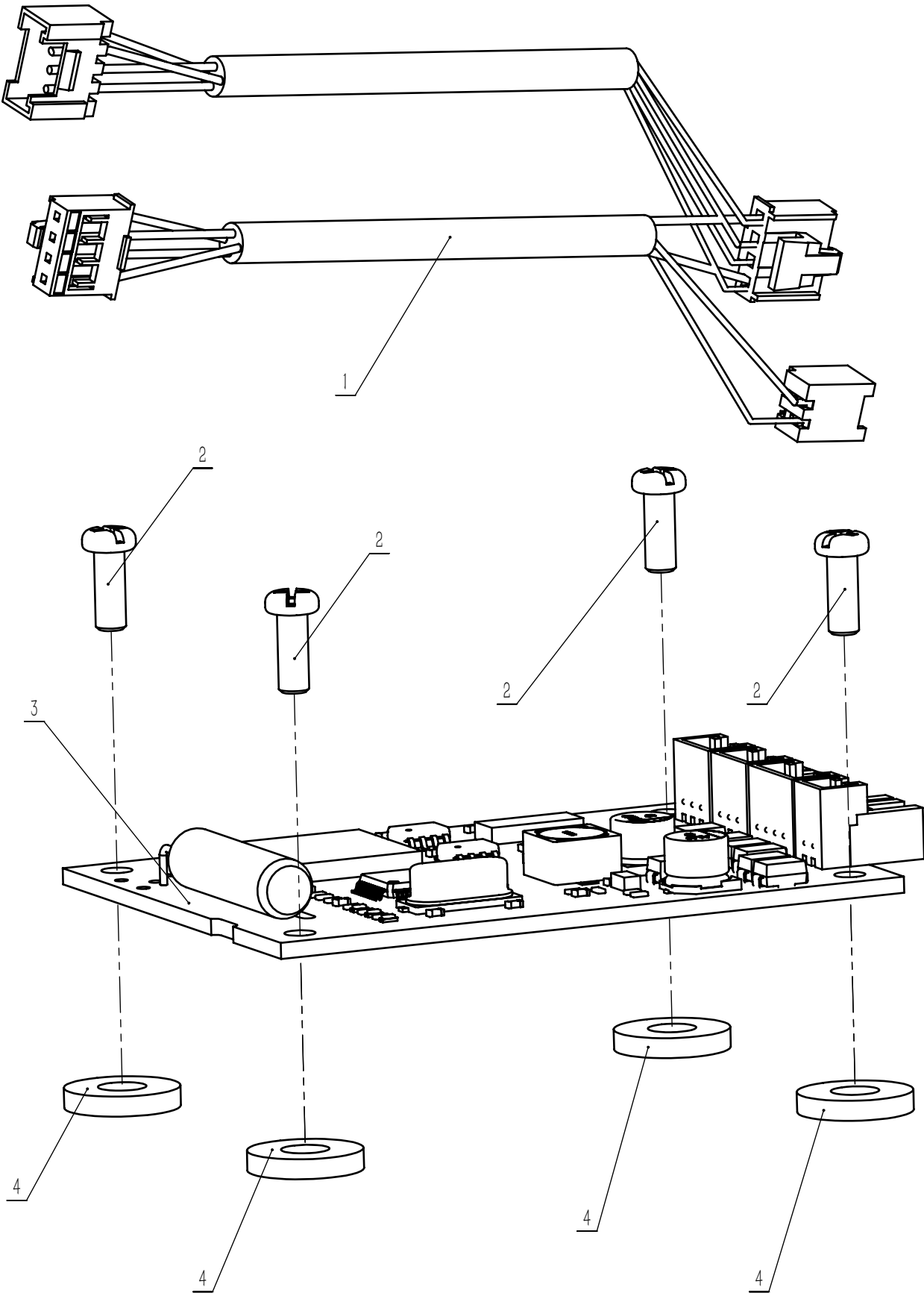
| 序号 | 注解 | 公司件号 | 名称 | DESCRIPTION | 用量 |
|----|----|-------------|-----------------|------------------------------------|----|
| 1 | | 14231200300 | 气动供给架组件 | PNEUMATIC SUPPLY FRAME ASSEMBLY | 1 |
| 2 | | 417S30033 | 螺栓(带垫圈)M4×8(切换) | BOLT(WITH WASHER)M4×8(SWITCH) | 2 |
| 3 | | H03003 | GB/T894.1挡圈5.6 | GB/T 894.1RING5.6 | 4 |
| 4 | | 41709012 | 气缸接头 | CYLINDER CONNECTOR | 2 |
| 5 | | 41726002 | 气缸接头轴 | CYLINDER CONNECTOR SHAFT | 2 |
| 6 | | 42536004 | 气管接头 | TRACHEAL CONNECTOR | 2 |
| 7 | | 142345002 | 排气调速接头 | EXHAUST SPEED REGULATING CONNECTOR | 2 |
| 8 | | 142345003 | 气缸组件 | CYLINDER ASSEMBLY | 2 |
| 9 | | H03019 | 轴用挡圈C5 | SHAFT RETAINING RING C5 | 2 |
| 10 | | W01013 | 垫圈4.5 | GASKETS 4.5 | 2 |
| 11 | | 142312006 | 电磁阀安装板 | SOLENOID VALVE MOUNTING PLATE | 1 |
| 12 | | 421S13017 | 螺钉带垫M5×10 | SCREW WITH CUSHION M5×10 | 2 |
| 13 | | 42130096 | 手动开关 | MANUAL SWITCH | 1 |
| 14 | | 141845004 | 气源处理元件 | GAS SOURCE PROCESSING ELEMENT | 1 |
| 15 | | 40736045 | 螺纹直通接头 | THREADED STRAIGHT JOINT | 1 |
| 16 | | 142345001 | 消声器 | MUFFLER | 2 |
| 17 | | 41845222 | 螺纹直通 | THREAD THROUGH | 3 |
| 18 | | 407S04053 | 十字半圆头螺钉 | CROSS RECESSED HEAD SCREW | 2 |
| 19 | | 41845212 | 电磁阀 | MAGNETIC VALVE | 1 |
| 20 | | 40736036 | 气管接头(Y型三通) | TRACHEAL JOINT (TYPE Y TEE) | 2 |
| 21 | | 41845223 | 气管Φ4×2.5透明蓝 | TRACHEA Φ4×2.5 CLEAR BLUE | 3M |
| 22 | | 142330002 | 电磁阀转接线 | SOLENOID VALVE CONNECTION | 1 |
| 23 | | 409S14002 | 螺钉 SM11/64"×40 | SCREW SM11/64"×40 | 2 |
| 24 | | W02002 | 弹垫 | SPRING WASHER | 4 |
| 25 | | 413S13003 | 螺钉 M4×6 | SCREW M4×6 | 4 |
| 26 | | 40316034 | 左压脚架 | RIGHT PRESSER FOOT RACK | 1 |
| 27 | | 40316033 | 右压脚架 | LEFT PRESSER FOOT RACK | 1 |
| 28 | | 42316601 | 压脚板(50×60) | PRESSER FOOT PLATE(50×60) | 1 |
| 29 | | 42315601 | 送料板(50×60) | FEED PLATE(50×60) | 1 |
| 30 | | 403S30020 | 螺钉 | SCREW | 3 |
| 31 | | N01013 | 螺母M3 | NUT M3 | 2 |

17、SPACIAL PURPOSE PARTS OF THE INTERNET FOR 1900G-D
1900G-D物联网专用部件



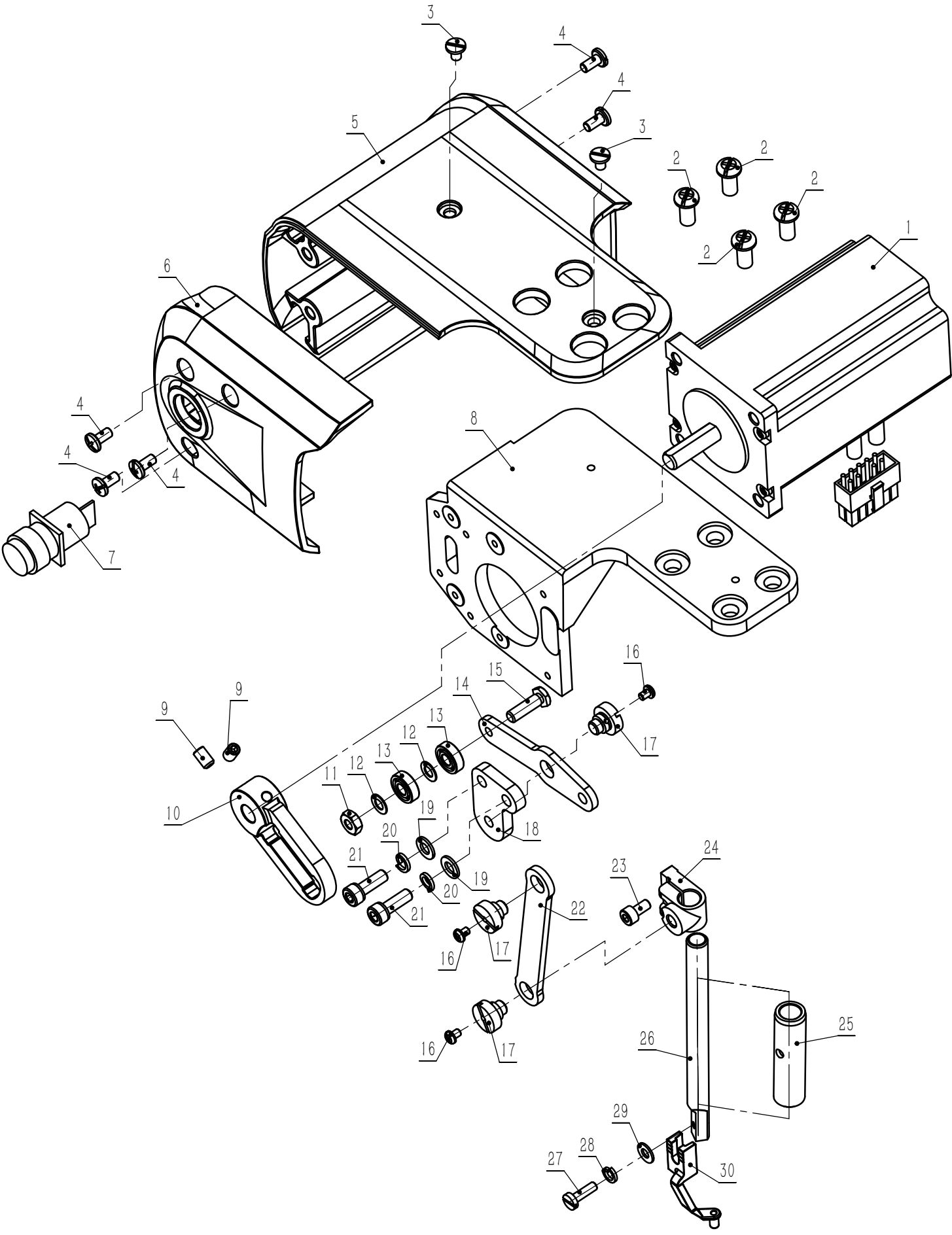
| 序号 | 注解 | 公司件号 | 名称 | DESCRIPTION | 用量 |
|----|----|-----------|------------|--|----|
| 1 | | 403S13015 | 滚花内六角圆柱头螺钉 | SCREW M4×16 | 2 |
| 2 | | 140301003 | 大豪物联网支架 | INTERNET OF THINGS SUPPORT (DA HAO) | 1 |
| 3 | | 40128021 | 垫片 | WASHER | 2 |
| 4 | | 140330005 | 大豪物联网电路板 | INTERNET OF THINGS CIRCUIT BOARDS (DA HAO) | 1 |
| 5 | | S04076 | 复合槽圆柱头螺钉 | SCREW M3×8 | 2 |
| 6 | | 140330004 | 大豪物联网连接线 | INTERNET OF THINGS CONNECTION (DA HAO) | 1 |

18、SPACIAL PURPOSE PARTS OF THE INTERNET FOR 1900G-B
1900G-B物联网专用部件



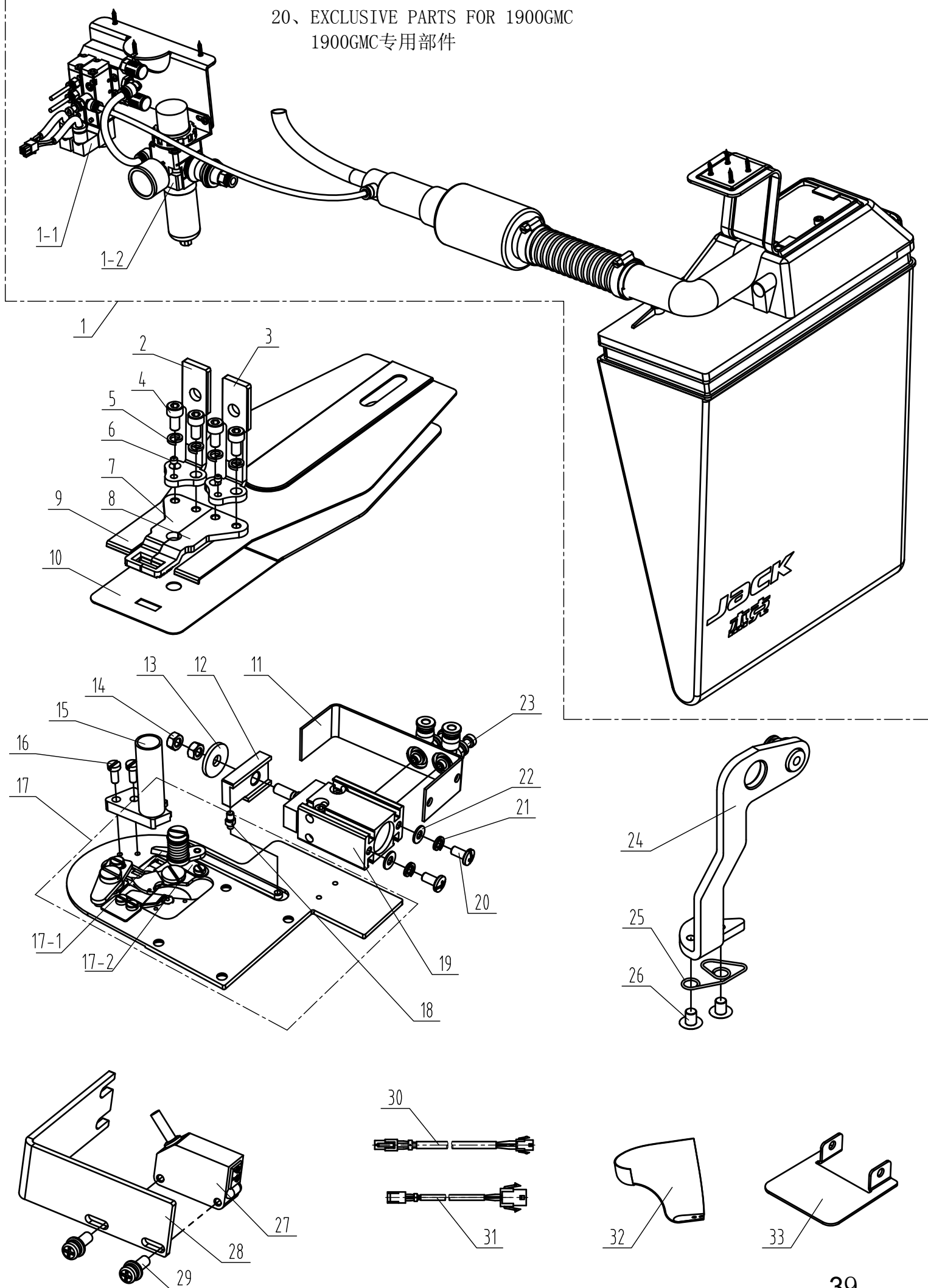
| 序号 | 注解 | 公司件号 | 名称 | DESCRIPTION | 用量 |
|----|----|-----------|----------|---|----|
| 1 | | 140330014 | 鲍麦物联网连接线 | INTERNET OF THINGS SUPPORT (DAO MAI) | 1 |
| 2 | | S04076 | 复合槽圆柱头螺钉 | SCREW M3×8 | 4 |
| 3 | | 40128021 | 垫片 | WASHER | 4 |
| 4 | | 141830042 | 鲍麦物联网电路板 | INTERNET OF THINGS CIRCUIT BOARDS (DAO MAI) | 1 |

19、EXCLUSIVE PARTS FOR 1906GSZ
1906GSZ专用部件



| 序号 | 注解 | 公司件号 | 名称 | DESCRIPTION | 用量 |
|------|----|-----------|------------------|--|----|
| 1-1 | | 42333601 | 中压脚电机 (-B) | MEDIUM PRESSURE FOOT MOTOR (-B) | 1 |
| 1-2 | | 42333601 | 中压脚电机 (-D) | MEDIUM PRESSURE FOOT MOTOR (-D) | 1 |
| 2 | | 403S11009 | 螺钉 M6×12 | SCREW M6×12 | 4 |
| 3 | | 403S11011 | 螺钉 M4×6 | SCREW M4×6 | 2 |
| 4 | | 403S11013 | 螺钉 M4×8 | SCREW M4×8 | 6 |
| 5 | | 42311601 | 电机后罩 | AFTER THE MOTOR COVER | 1 |
| 6 | | 42311602 | 电机前罩 | BEFORE THE MOTOR COVER | 1 |
| 7 | | ----- | 开关 | SWITCH | 1 |
| 8 | | 42312603 | 电机安装板 | MOTOR MOUNTING PLATE | 1 |
| 9 | | S10002 | 螺钉 M5×5 | SCREW M5×5 | 2 |
| 10 | | 42301601 | 拨叉 | FORK | 1 |
| 11 | | 403S16006 | 六角螺母 M5 | NUT M5 | 1 |
| 12 | | 42328601 | 垫片 | WASHER | 1 |
| 13 | | B04020 | 深沟球轴承695ZZ | BEARING 695ZZ | 2 |
| 14 | | 142312010 | 杠杆 | LEVERAGE | 1 |
| 15 | | 423S20601 | 轴位螺钉 M5 | SHOULDER SCREW M5 | 1 |
| 16 | | S04036 | 螺钉 M3×4 | SCREW M3×4 | 3 |
| 17 | | 417S30007 | 轴位螺钉 | SHOULDER SCREW M6×0.75 | 3 |
| 18 | | 142312007 | 铰链安装板 | HINGE MOUNTING PLATE | 1 |
| 19 | | W01013 | 平垫圈 | WASHER | 2 |
| 20 | | W02001 | 弹簧垫圈5 | WASHER SPRING | 2 |
| 21 | | S05004 | 螺钉 M5×14 | SCREW M5×14 | 2 |
| 22 | | 142312008 | 中压脚连杆 | MIDDLE PRESSER FOOT CONNECTING ROD | 1 |
| 23 | | 413S13016 | 螺钉 M4×8 | SCREW M4×8 | 1 |
| 24 | | 142301003 | 压紧杆接头 | HOLD DOWN BAR JOINT | 1 |
| 25 | | 41703015 | 压紧杆轴套 | PRESSING ROD SLEEVE | 1 |
| 26 | | 41702018 | 压紧杆 | PRESSER BAR | 1 |
| 27 | | 417S15011 | 螺钉 SM9/64"×40×12 | SCREW SM9/64"×40×12 | 1 |
| 28 | | W02008 | 弹垫2-4 | WASHER SPRING | 1 |
| 29 | | W01001 | 平垫圈4 | WASHER | 1 |
| 30-1 | | 41716001 | 中压脚(标配) | MEDIUM PRESSURE FOOT (STANDARD CONFIGURATION) | 1 |
| 30-2 | | 42316603 | 中压脚(选配) | MEDIUM PRESSURE FOOT(OPTIONAL) | 1 |

20、EXCLUSIVE PARTS FOR 1900GMC
1900GMC专用部件



| 序号 | 注解 | 公司件号 | 名称 | DESCRIPTION | 用量 |
|------|------|-------------|---------------|-------------------------------|----|
| 1 | | 14034500300 | 吸风装置组件(QX) | SUCTION DEVICE COMPONENTS | 1 |
| 1-1 | | 41845212 | 电磁阀 | MAGNETIC VALVE | 2 |
| 1-2 | | 141845004 | 气源处理元件 | GAS SOURCE PROCESSING ELEMENT | 1 |
| 2 | | 40316034 | 左压脚架 | LEFT PRESSER FOOT RACK | 1 |
| 3 | | 40316033 | 右压脚架 | RIGHT PRESSER FOOT RACK | 1 |
| 4 | | 413S13016 | 螺钉M4x8 | SCREW M4x8 | 4 |
| 5 | | W02002 | 弹垫4 | SPRING WASHER 4 | 4 |
| 6 | | 409S14008 | 螺钉SM11/64"x40 | SCREW SM11/64"x40 | 2 |
| 7 | | 140316005 | 左压脚 | LEFT PRESSER FOOT | 1 |
| 8 | | 140316013 | 右压脚 | RIGHT PRESSER FOOT | 1 |
| 9 | | 140315014 | 送料挡板 | FEE DPRESSER FOOT | 1 |
| 10 | | 140315010 | 送料板 | FEED PLATE | 1 |
| 11 | | 140312017 | 防护板 | SAFETY PLATE | 1 |
| 12 | | 140305005 | 气缸推板 | CYLINDER PULL PLATE | 1 |
| 13 | | 40128034 | 垫圈 | GASKETS | 1 |
| 14 | | N01004 | 螺母M5 | NUT M5 | 1 |
| 15 | | 140345006 | 吸风管 | TRACHEA | 1 |
| 16 | | 1406NS11001 | 螺钉 | SCREW | 2 |
| 17 | | 14031501100 | 针板组件 | NEEDLE PLATE ASM | 1 |
| 17-1 | | 140319005 | 动刀 | MOVING KNIFE | 1 |
| 17-2 | | 140319004 | 定刀 | FIXED KNIFE | 1 |
| 18 | | 140329001 | 连接销 | CONNECTING PIN | 1 |
| 19 | | 140345007 | 气缸MK16x10 | CYLINDER MK16x10 | 1 |
| 20 | | 403S11013 | 螺钉M4×8 | SCREW M4×8 | 2 |
| 21 | | W02008 | 弹垫2-4 | WASHER 2-4 | 2 |
| 22 | | W01001 | 垫片 | WASHER | 2 |
| 23 | | 40736004 | 接头 | CONNECTING | 2 |
| 24 | | 14031202500 | 扫线杆组件 | WIPER C ASM | 1 |
| 25 | | 40527014 | 勾线弹簧 | SPRING | 1 |
| 26 | | 405S11007 | 螺钉 | SCREW | 2 |
| 27 | | 140330023 | 布料感应传感器 | CLOTH SENSOR | 1 |
| 28 | | 140312026 | 传感器安装板 | SENSOR MOUNTING PLATE | 1 |
| 29 | | 403S11043 | 螺钉组件M3X10 | SCREW ASM M3×10 | 2 |
| 30-1 | -D | 140330026 | 吸风剪线电磁阀转接线 | SOLENOID VALVE ADAPTER CABLE | 1 |
| 30-2 | -DII | 140330027 | 吸风剪线电磁阀转接线 | SOLENOID VALVE ADAPTER CABLE | 1 |
| 31-1 | -D | 140330024 | 布料感应传感器转接线 | SENSOR ADAPTER CABLE | 1 |
| 31-2 | -DII | 140330025 | 布料感应传感器转接线 | SENSOR ADAPTER CABLE | 1 |
| 32 | | 930000228 | 梭床罩(喷漆) | SHUTTLE BEDSPREAD | 1 |
| 33 | | 140312016 | 供给架压板 | PRESSURE PLATE | 1 |