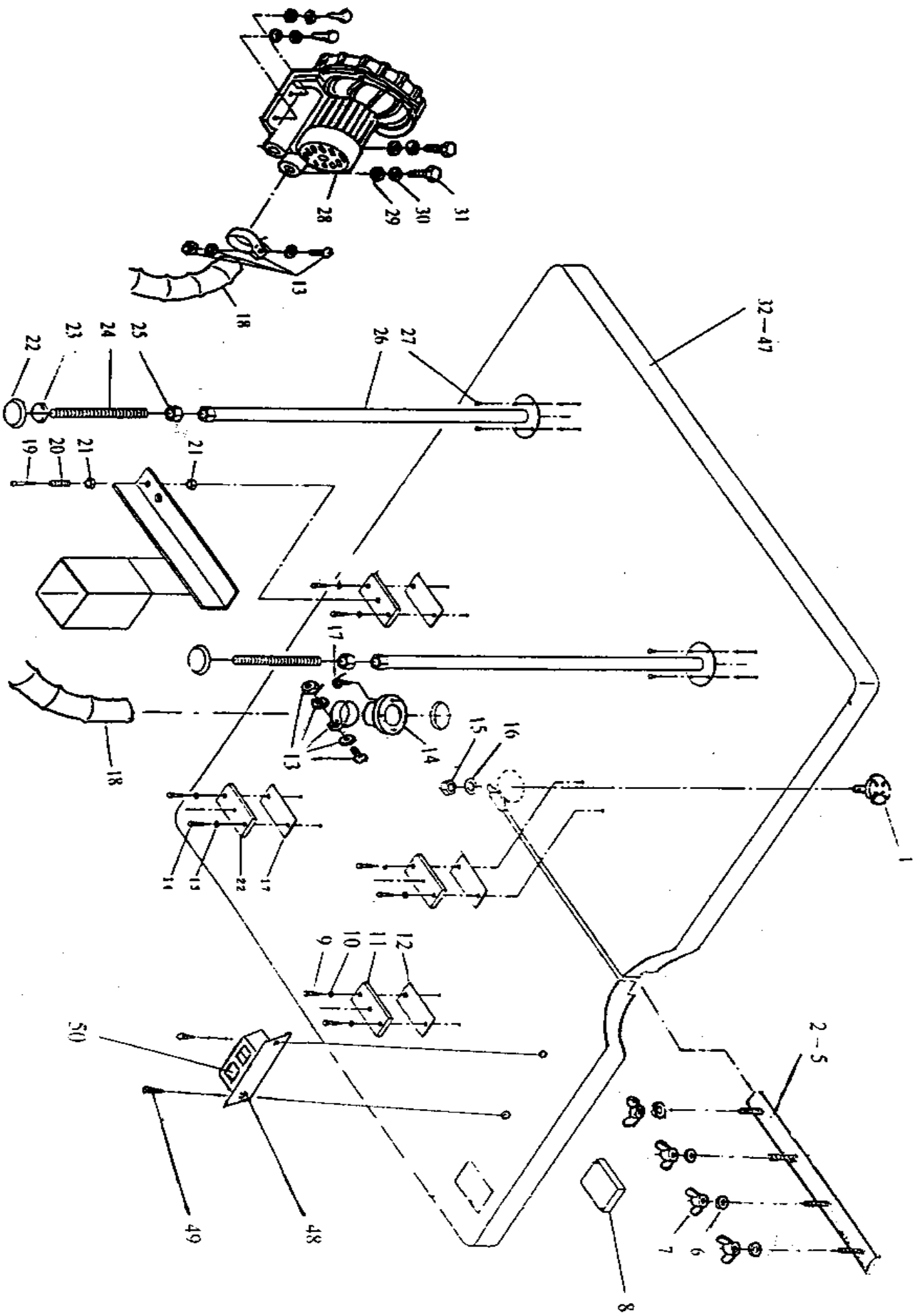


BAND KNIFE CUTTING MACHINE

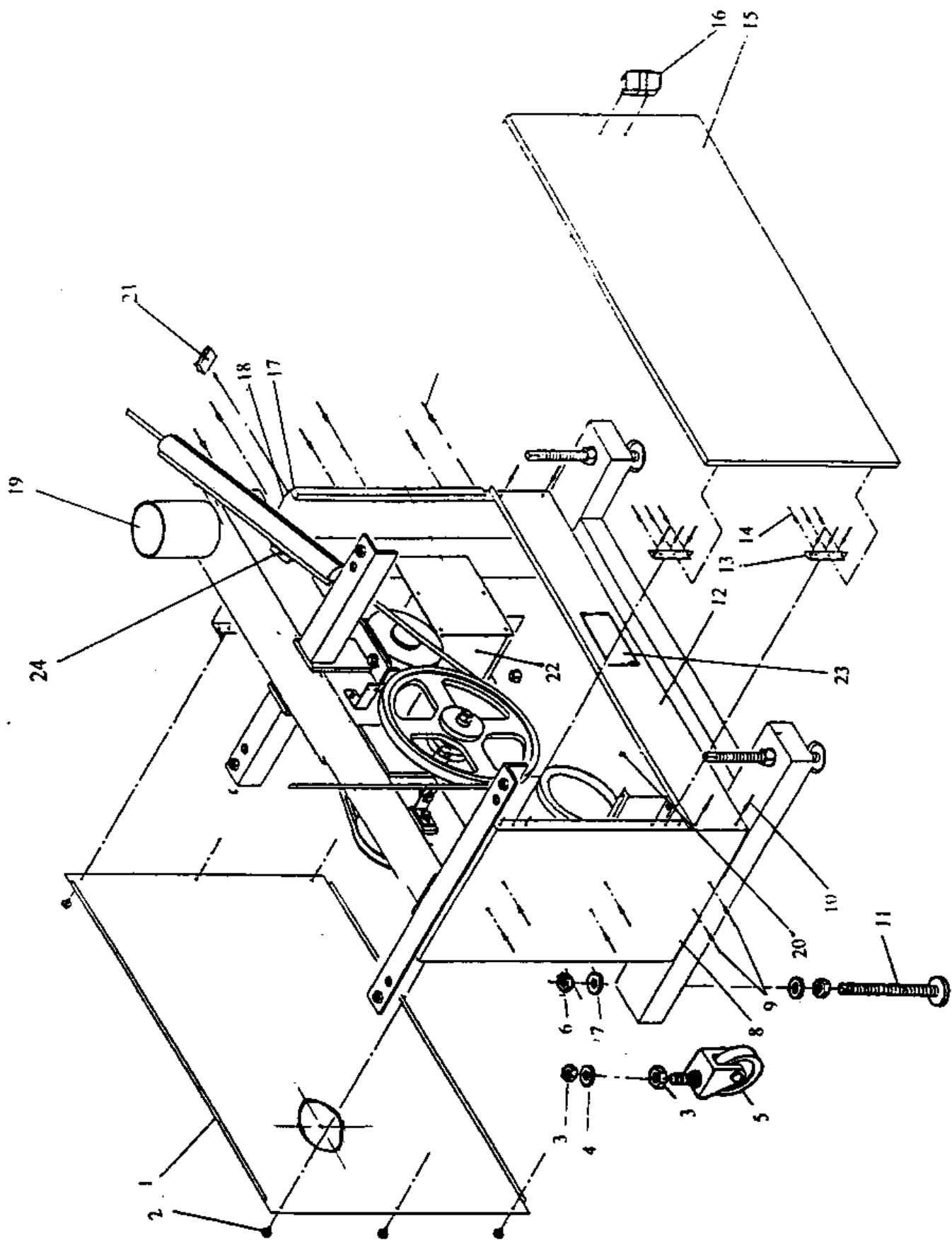
MODEL BK SERIES

PARTS LIST

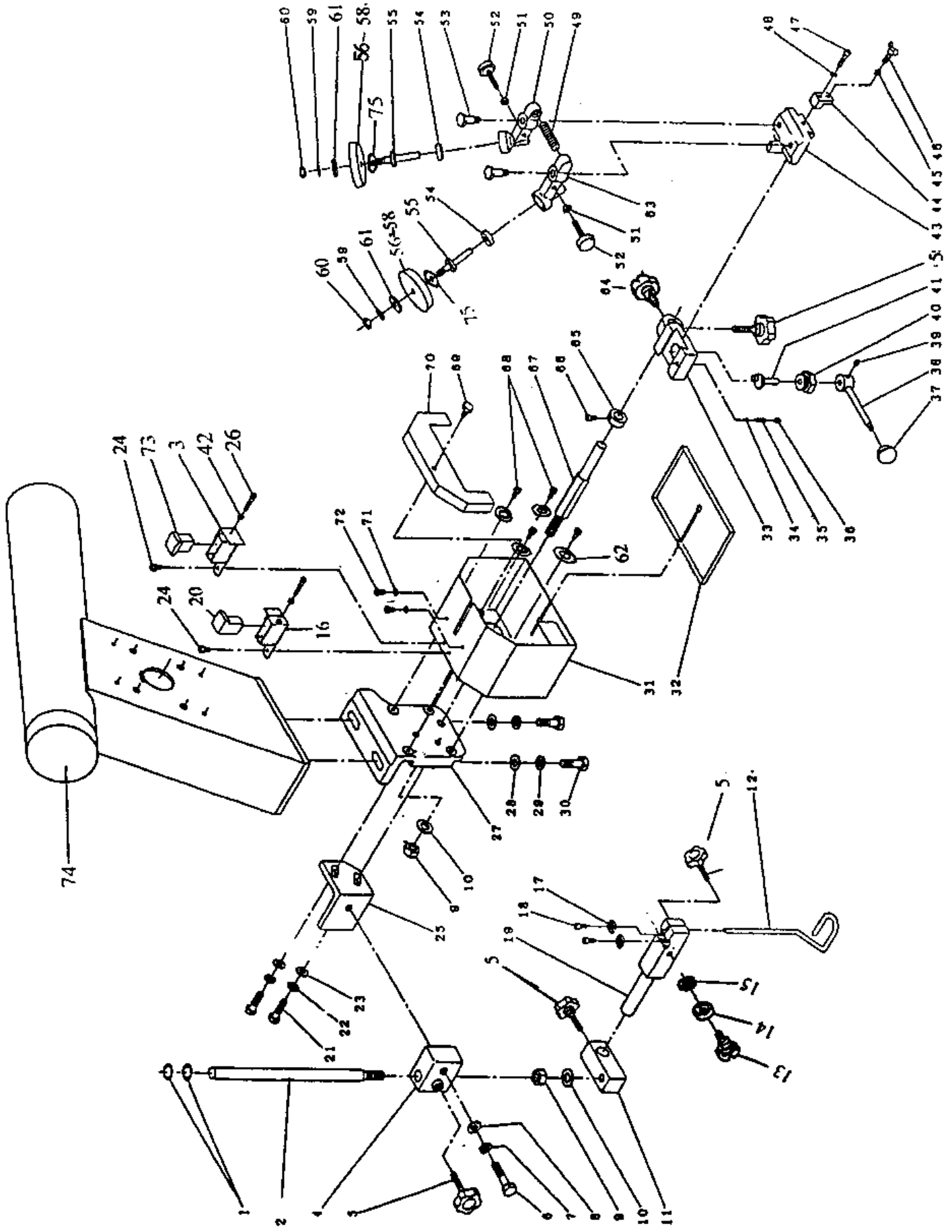
C-B2/1200; 550; 700



NO.	STOCK NO.	NAME	QTY.	REMARK
1	DCQ1200-II-0.6	CENTER PLATE	1	
2	DCQ1200-II-0.7	PLATE	1	BK1200 ONLY
3	DCQ900-II-0.7	PLATE	1	BK900 ONLY
4	DCQ700-II-0.7	PLATE	1	BK700 ONLY
5	DCQ550-II-0.7	PLATE	1	BK550 ONLY
6	DCQ1200-II-0-10	WASHER	4	
7	GB62-88	NUT M6	4	
8		CONTROL PANEL	1	BK AND BKL ONLY
9	GB845-86	SCREW ST6.3X30	8	
10	GB97.1-85	WASHER 6	8	
11	BK-900-0-1	TABLE FIXING STAND	4	
12	BK-900-0-2	PLATE FOR FIXING STAND	4	
13		THROAT HOOP Φ40	2	
14	DCQ1200-II-0-4	PIPE LINER	1	
15	GB6170-85	NUT M12	1	
16	DCQ1200-II-0-9	WASHER	1	
17	GB845-86	SCREW ST6.3X25	3	
18		PIPE Φ40X1000	1	
19	GB70-85	SCREW 6X55	4	
20	BK-900-0-3	GUIDE SHELL	4	
21	GB6170-85	NUT M12	8	
22	GE1-1-8011	SLEEVE	2	
23	BK-900-0-7	PLATE FOR ADJUSTING BOLT	6	
24	BK-900-0-4	ADJUSTING BOLT	2	
25	GB6170-85	NUT M18	2	
26	BK-900-0.1	POLE	2	
27	GB845-86	SCREW ST4.2X16	8	
28		BLOWER XGB8 0.37KW	1	
29	GB97.1-85	WASHER 8	4	
30	GB93-87	WASHER 8	4	
31	GB5782-86	BOLT M8X20	4	
32	BK-1200-0.4	TABLE	1	BK-1200 AND BKL-1200 ONLY
33	BKM-1200-0.4	TABLE	1	BKM-1200 AND BKML-1200 ONLY
34	BK-900-0.4	TABLE	1	BK900 AND BKL-900 ONLY
35	BKM-900-0.4	TABLE	1	BKM-900 AND BKML-900 ONLY
36	BK-700-0.4	TABLE	1	BK-700 AND BKL-700 ONLY
37	BKM-700-0.4	TABLE	1	BKM-700 AND BKML-700 ONLY
38	BK-550-0.4	TABLE	1	BK-550 AND BKL-550 ONLY
39	BKM-550-0.4	TABLE	1	BKM-550 AND BKML-550 ONLY
40	BKG-1200-0.4	TABLE	1	BKG-1200 AND BKLG-1200 ONLY
41	BKMG-1200-0.4	TABLE	1	BKMG-1200 AND BKMLG-1200 ONLY
42	BKG-900-0.4	TABLE	1	BKG-900 AND BKLG-900 ONLY
43	BKMG-900-0.4	TABLE	1	BKMG-900 AND BKMLG-900 ONLY
44	BKG-700-0.4	TABLE	1	BKG-700 AND BKLG-700 ONLY
45	BKMG-700-0.4	TABLE	1	BKMG-700 AND BKMLG-700 ONLY
46	BKG-550-0.4	TABLE	1	BKG-550 AND BKLG-550 ONLY
47	BKMG-550-0.4	TABLE	1	BKMG-550 AND BKMLG-550 ONLY
48	GFK-1	SWITCH	1	
49	GB845-86	SCREW ST4.2X16	2	
50	BK900-0-16	NAME PLATE(1)	1	

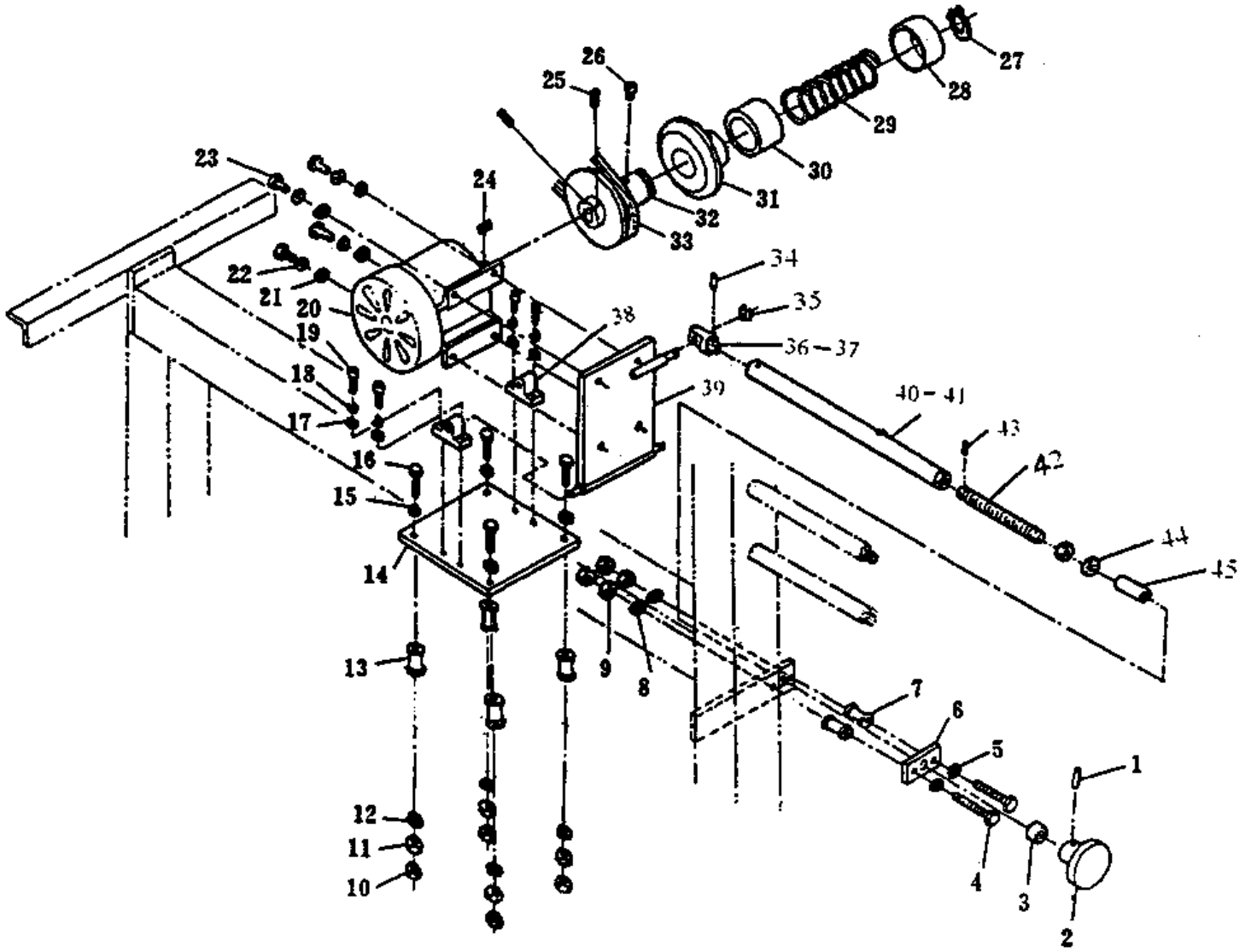


NO.	STOCK NO.	NAME	QTY.	REMARK
1	BK-900-0-6	BACK BOARD	1	
2	GB818-85	SCRWE M5X8	6	
3	GB6170-86	NUT M12	8	
4	GB97.1-85	WASHER 12	4	
5		WHEEL Φ 100	4	
6	GB6170-86	NUT M18	8	
7	GB97.1-85	WASHER 18	8	
8	BK-900-0.6	LEFT SIDE BOARD	1	
9		SELF-PLUGGING RIVET Φ 4	12	
10		SELF-PLUGGING RIVET Φ 3	8	
11	BK-900-0-11	ADJUSTING BOLT	4	
12	BK-900-0-8	FRONT BOTTOM BOARD	1	
13		SELF-PLUGGING RIVET Φ 3	4	
14		SELF-PLUGGING RIVET Φ 3	4	
15	BK-900-0.7	DOOR	1	
16		LOCK 503	1	
17	BK-900-0-10	RIGHT SIDE LINING BOARD	1	
18	BK-900-0.5	RIGHT SIDE BOARD	1	
19	BK-900-0.3	STAND	1	
20	BK-900-0-5	BOTTOM PLATE OF STAND	1	
21	BK900-0-9	NAME PLATE (2)	1	
22		INVERTER	1	
23	BK-900-0-12	NAME PLATE	1	
24	BK-900-0-13		1	

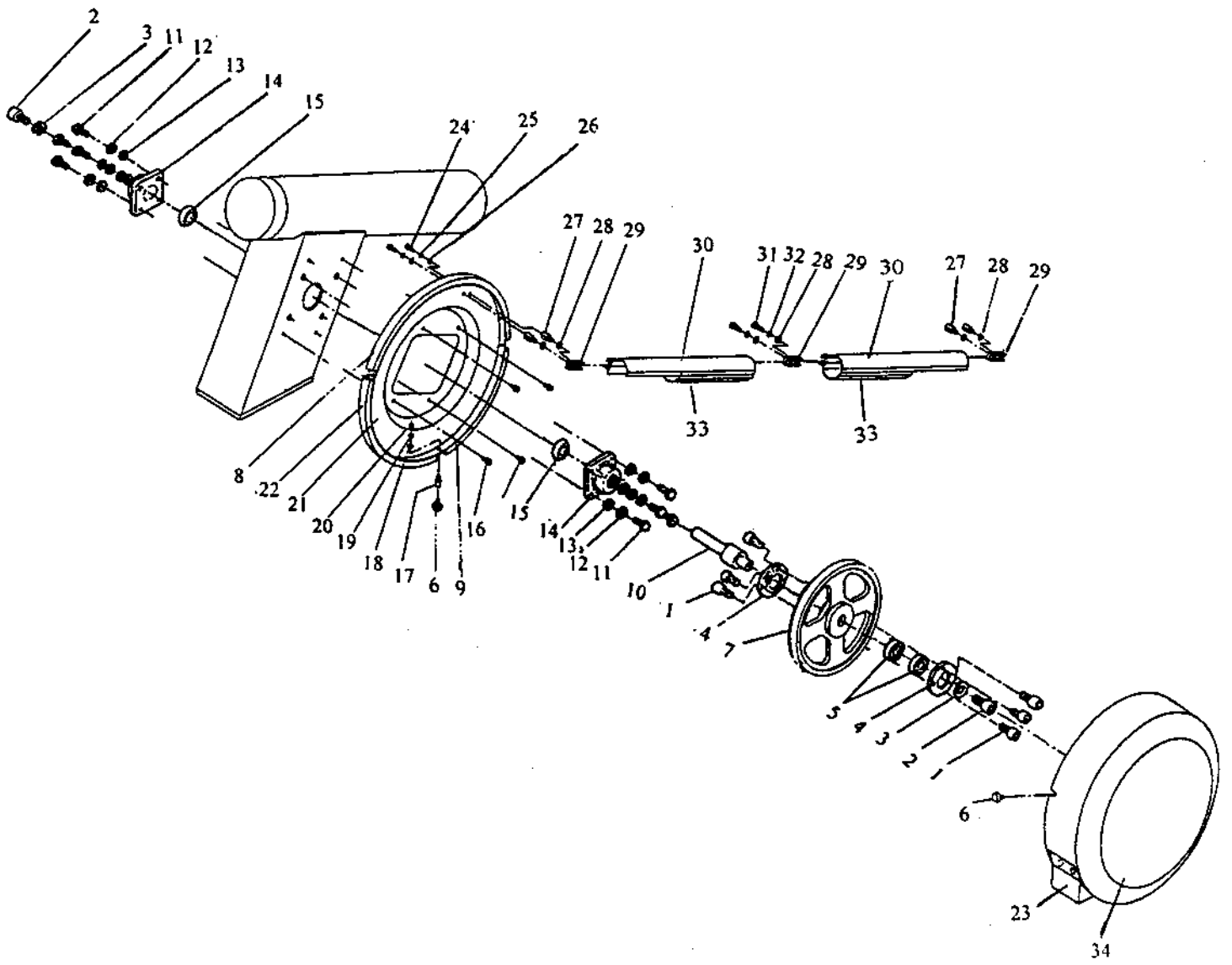


NO.	STOCK NO.	NAME	QTY.	REMARK
1	GB894.1-86	RETAINER RING	1	
2	DCQ1200-II-1-3	ADJUSTING POLE	1	
3	BK900-1-3	RIGHT OIL BUNKER	1	
4	DCQ1200-II-1-1	STAND	1	
5		HANDLE M8X38	1	
6	GB5782-86	BOLT M8X45	1	
7	GB93-87	WASHER 8	1	
8	GB97.1-85	WASHER 8	1	
9	GB6170-86	NUT M12	1	
10	GB97.1-85	WASHER12	1	
11	BK-900-1-5	ADJUSTING POLE JOINT	1	
12	DCQ1200-II-1-5	PRESSURE FOOT	1	
13	DCQ1200-II-1-12	FIXING SCREW	1	
14	GB276-64	BEARING 19	1	
15	GB97.1-85	WASHER 8	1	
16	BK-900-1-9	LEFT OIL BUNKER	1	
17		BLADE	2	
18	GB70-85	SCREW M4X10	2	
19	DCQ1200-II-1-7	COUNTER BLADE	1	
20	BK-900-1-4	LINOLEUM	1	
21	GB5782-86	BOLT M8X25	2	
22	GB93-87	WASHER 8	2	
23	GB97.1-85	WASHER 8	2	
24	GB818-85	SCREW M5X10	2	
25	BK-900-1-2	JOINT BOARD	1	
26	GB5782-86	BOLT M4X25	2	
27	BK-900-1-1	FIXING BOARD	1	
28	GB97.1-85	WASHER 10	2	
29	GB93-87	WASHER 10	2	
30	GB5782-86	BOLT M10X30	2	
31	BK-900-1.1	GRINDSTONE COVER	1	
32	DCQ1200-II-6-7	GRINDSTONE COVER CARRIAGE	1	
33	BK-900-1-6	BOTTOM CARRIAGE	1	
34		STEEL BALL ϕ 5	1	
35	BK-900-1-7	ADJUSTING SPRING FOR CARRIAGE	1	
36	GB77-85	SCREW M6X8	1	
37	JB1340-75	HANDLE BALL M8X25	1	
38	DCQ1200-II-6.2-1	HANDLE BODY	1	
39	GB73-85	SCREW M6X8	1	
40	BK-900-1-10	ECCENTRIC FIXING SLEEVE	1	

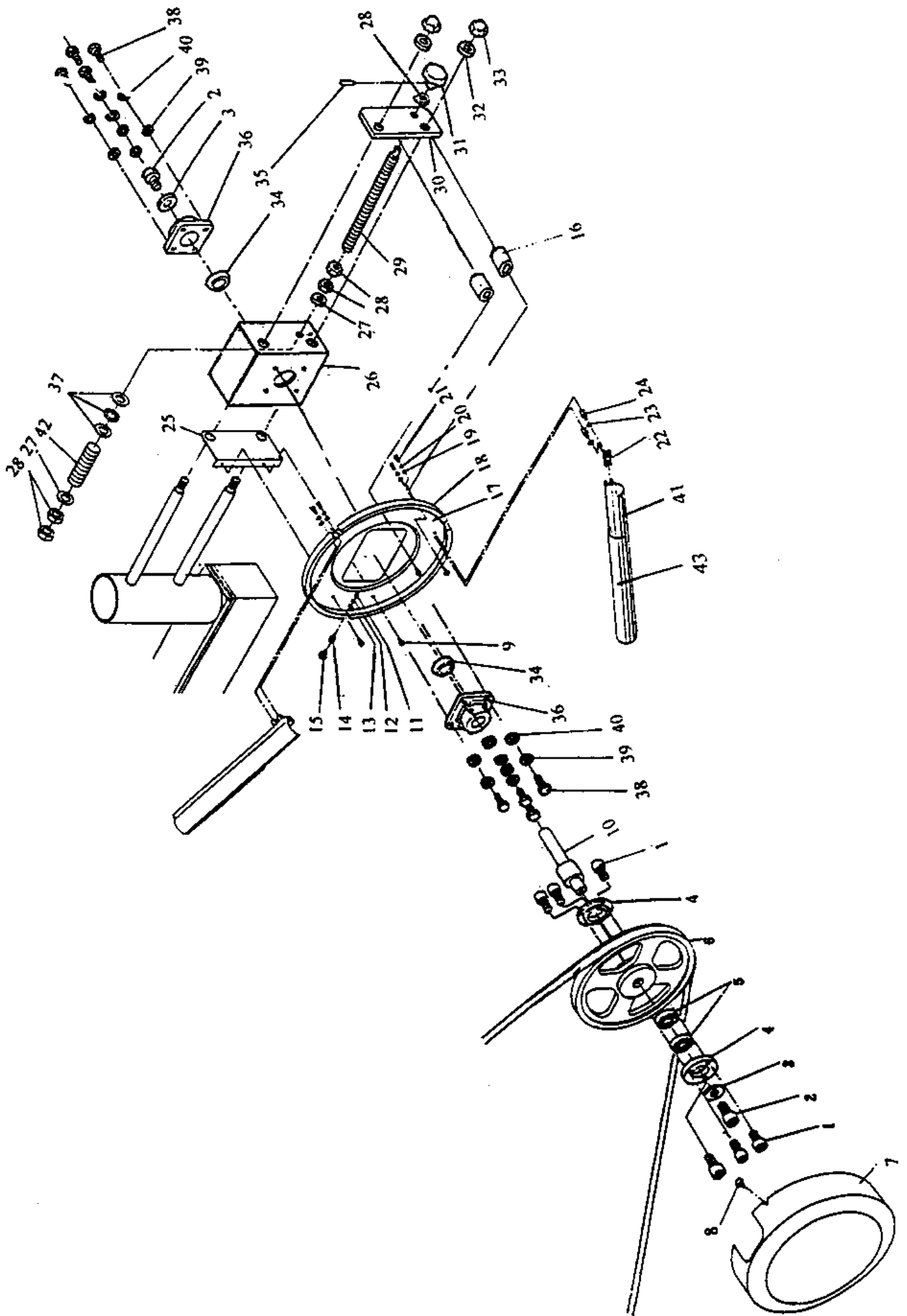
NO.	STOCK NO.	NAME	QTY.	REMARK
41	BK-900-1-11	ECCENTRIC WHEEL	1	
42	GB6170-86	NUT M4	2	
43	BK-900-1-12	UPPER CARRIAGE	1	
44	DCQ1200-II-6-10	LIMIT BOARD	1	
45	DCQ1200-II-6-12	NUT M5	1	
46	DCQ1200-II-6-11	ADJUSTING SCREW	1	
47	GB70-85	SCREW M5X20	1	
48	GB93-87	WASHER 5	1	
49	DCQ1200-6-15	PRESSURE FOOT SPRING	1	
50	BK-900-1-14	RIGHT PRESSURE FOOT	1	
51	DCQ1200-6-14	ADJUSTING NUT	2	
52	DCQ1200-6-13	ADJUSTING BOLT	2	
53	BK-900-1-15	SCREW	2	
54	GB278-64	BEARING 80028	2	
55	BK-900-1-17	GRINDSTONE CORE	2	
56	DCQ1200-II-6-1	GRINDSTONE (THICK)	2	
57	DCQ1200-II-6-2	GRINDSTONE (THINNER)	2	
58	DCQ1200-II-6-3	GRINDSTONE (THIN)	2	
59	GB93-87	WASHER 8	2	
60	GB6170-86	NUT M8	2	
61	GB97.1-85	WASHER 8	2	
62	GB97.1-85	WASHER 5	4	
63	BK-900-1-19	LEFT PRESSURE FOOT	1	
64		HANDLE M6X18	1	
65	BK-900-1-13	RETAINER RING	1	
66	GB5782-86	BOLT M5X10	1	
67	BK-900-1-8	SUPPORTING POLE	1	
68	GB818-85	SCREW M5X20	4	
69	DCQ1200-II-6-8	SCREW FOR SAFETY MIRROR	1	
70	DCQ1200-II-6-6	SAFETY MIRROR	1	
71	GB97.1-85	WASHER 5	2	
72	GB818-85	SCREW M5X8	2	
73	BK-900-1-4	LINOLEUM	1	
74	BK-900-1-18	FRONT COVER	1	
75	BK-900-1-16	SHAFT SLEEVE	2	



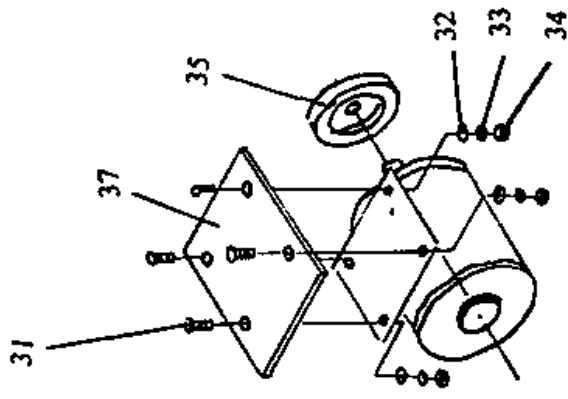
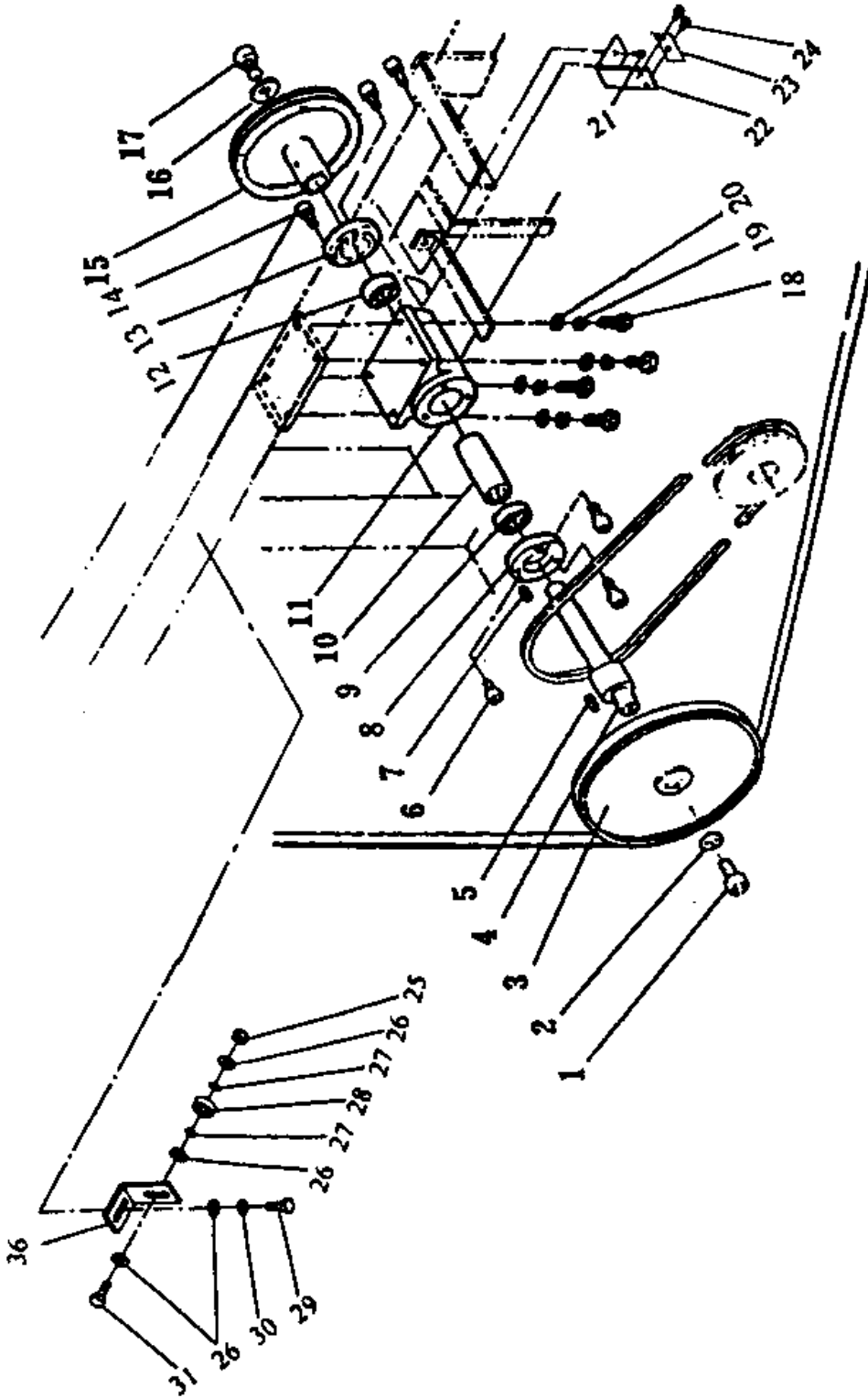
NO.	STOCK NO.	NAME	QTY.	REMARK
1	GB119-86	PIN 3X18	1	
2	GB4141.20-84	HANDLE WHEEL B8X63	1	
3	DCQ1200-II-5-4	SCREW ROD SLEEVE	1	
4	GB5782-86	BOLT M6X60	2	
5	GB97.1-85	WASHER 6	2	
6	DCQ1200-II-5-5	SCREW ROD FIXING BOARD	1	
7	DCQ1200-II-5-9	SCREW ROD ANTI-SHAKE SLEEVE	2	
8	GB97.1-85	WASHER 6	2	
9	GB6170-86	NUT M6	4	
10	GB6170-86	NUT M8	4	
11	GB6170-86	NUT M8	4	
12	GB97.1-85	WASHER 6	4	
13	DCQ1200-II-5-10	ANTI-SHAKE SLEEVE FOR MOTOR	4	
14	DCQ1200-II-5-10	MAIN BOARD OF MOTOR	1	
15	GB97.1-85	WASHER 8	4	
16	GB5782-86	BOLT M6X60	4	
17	GB97.1-85	WASHER 6	4	
18	GB93-87	WASHER 6	4	
19	GB70-85	SCREW M6X16	4	
20		MOTOR Y80-4 380V 0.75KW	1	
21	GB97.1-85	WASHER 8	4	
22	GB93-87	WASHER 8	4	
23	GB5782-86	BOLT M6X60	4	
24	GB1096-79	KEY C6X60	1	
25	GB80-86	SCREW M6X10	2	
26	DCQ1200-II-5-13	SCREW	1	
27	GB896-86	RETAINER RING 40	1	
28	DCQ1200-II-5-15	SPRING COVER	1	
29	DCQ1200-II-5-8	SPRING	1	
30	DCQ1200-II-5-14	SPRING GUIDE SLEEVE	1	
31	DCQ1200-II-5-11	LEFT SLIDE WHEEL	1	
32	DCQ1200-II-5-12	RIGHT SLIDE WHEEL	1	
33	GB1171-74	TAPE B838	1	
34	GB119-86	PIN 5X25	1	
35	GB896-86	RETAINER RING 9	1	
36	DCQ1200-II-5-7	JOINT	1	BKM BKMG BKML BKMLG(700~1200)
37	DCQ550-II-5-7	JOINT	1	BKM BKMG BKML BKMLG(550)
38	DCQ1200-II-5-2	FIXING STAND	2	
39	DCQ1200-II-5.1	MOTOR CONNECT BOARD	1	
40	DCQ1200-II-5.2	SPEED ADJUSTING POLE	1	BKM BKMG BKML BKMLG(1200)
41	DCQ900-II-5.2	SPEED ADJUSTING POLE	1	BKM BKMG BKML BKMLG (900~550)
42	DCQ1200-II-5-6	SPEED ADJUSTING SCREW ROD	1	
43	GB879-86	PIN 3X16	1	
44	GB6170-86	NUT M12	2	
45	DCQ1200-II-5-3	SCREW ROD LONG SLEEVE	1	



NO.	STOCK NO.	NAME	QTY.	REMARK
1	GB70-85	SCREW M5X10	6	
2	GB70-85	SCREW M10X16	2	
3	DCQ1200-2-9	WASHER	2	
4	DCQ1200-2-8	BEARING COVER	1	
5	GB276-64	BEARING 205	2	
6	BK-900-2.2	FIXING SCREW	3	
7	BK-900-2.1	FIRST AND SECONG WHEEL	1	
8	BK-900-2-1	UPPER RUBBER FOR FIRST WHEEL	1	
9	BK-900-2-2	RIGHT RUBBER FOR FIRST WHEEL	1	
10	DCQ1200-II-3-5	AXLE OF SECOND WHEEL	1	
11	GB5782-86	BOLT M10X30	8	
12	GB93-87	WASHER 10	8	
13	GB97.1-85	WASHER 10	8	
14		BEARING STAND UCF205	2	
15	DCQ1200-II-2-2	ADJUSTING SLEEVE	2	
16	GB70-85	SCREW M5X12	4	
17	BK-900-2-3	NUT	6	
18	GB97.1-85	WASHER 4	3	
19	GB93-87	WASHER 4	3	
20	GB6170-86	NUT M4	3	
21	BK-900-2-4	STAND OF FIRST WHEEL COVER	1	
22	BK-900-2-5	LEFT RUBBER FOR FIRST WHEEL	1	
23	BK-900-2-6	COUNTER BLADE OF FIRST WHEEL	1	
24	GB5782-86	BOLT M5X20	2	
25	GB93-87	WASHER 5	2	
26	GB97.1-85	WASHER 5	2	
27	BK-900-2-7	FIXING SLEEVE	4	
28	GB93-87	WASHER 5	4	
29	BK-900-2-8	CONNECTING BOARD	3	
30	BK-900-2-9	UPPER ALUMINUM SLEEVE	1	
31	GB818-85	SCREW M5X18	2	
32	GB93-87	WASHER 5	2	
33	BK-900-2-10	BOTTOM ALUMINUM SLEEVE	1	
34	BK-900-2-11	FIRST WHEEL COVER	1	



NO.	STOCK NO.	NAME	QTY.	REMARK
1	GB70-85	SCREW M5X10	6	
2	GB70-85	SCREW M10X16	2	
3	DCQ1200-2-9	WASHER	2	
4	DCQ1200-2-8	BEARING COVER	1	
5	GB276-64	BEARING 205	2	
6	BK-900-2.1	FIRST AND SECOND WHEEL	1	
7	BK-900-3-1	SECOND WHEEL COVER	1	
8	BK-900-2.2	FIXING SCREW	1	
9	GB70-85	SCREW M5X12	2	
10	DCQ1200-II-3-5	AXLE OF SECOND WHEEL	1	
11	GB6170-86	NUT M4	3	
12	GB93-87	WASHER 4	3	
13	GB97.1-85	WASHER 4	3	
14	BK-900-2-7	FIXING SLEEVE	3	
15	BK-900-2.2	FIXING SCREW	2	
16	BK-900-3-3	BACK COVER FIXING SLEEVE	2	
17	BK-900-3-4	STAND OF SECOND WHEEL COVER	1	
18	BK-900-3-5	RUBBER OF SECOND WHEEL COVER	1	
19	GB93-87	WASHER 5	1	
20	GB97.1-85	WASHER 5	1	
21	GB5780-86	BOLT M5X20	2	
22	BK-900-2-8	CONNECT BOARD	2	
23	GB97.1-85	WASHER 5	2	
24	BK-900-2-7	FIXING SLEEVE	2	
25	BK-900-3-6	LEFT LIMIT BOARD	1	
26	BK-900-3-2	SECOND WHEEL ADJUSTING BOX	1	
27	GB97.1-85	WASHER 20	2	
28	GB6172-86	NUT M20	5	
29	BK-900-3-7	ADJUSTING SCREW ROD	1	
30	BK-900-3-8	ADJUSTING BOARD	1	
31	BK-900-3-9	HANDLE WHEEL	1	
32	GB97.1-85	WASHER 16	2	
33	GB923-88	NUT M16	2	
34	DCQ1200-II-2-2	ADJUSTING SLEEVE	2	
35	GB77-85	SCREW	1	
36		BEARING STAND UCF205	2	
37	GB302-64	BEARING 204	1	
38	GB5782-86	BOLT M10X30	8	
39	GB97.1-85	WASHER 10	8	
40	GB93-87	WASHER 10	8	
41	BK-900-3-10	BOTTOM ALUMINUM SLEEVE	1	
42	DCQ1200-II-3-2	ADJUSTING SPRING	1	
43	BK-900-3-11	UPPER ALUMINUM SLEEVE	1	



NO.	STOCK NO.	NAME	QTY.	REMARK
1	GB70-85	SCREW M10X16	1	
2	DCQ1200-2-9	WASHER	1	
3	DCQ1200-II-4.1	THIRD WHEEL	1	
4	BK-900-4-1	AXLE OF THIRD WHEEL	1	
5	GB1096-79	KEY C8X30	2	
6	GB70-85	SCREW M5X10	3	
7	GB1096-79	KEY C8X40	1	
8	DCQ1200-2-8	BEARING COVER	1	
9	GB276-64	BEARING 205	1	
10	DCQ1200-II-4-4	BEARING ISOLATE RING	1	
11	DCQ1200-II-4-3	FIXING STAND OF THIRD WHEEL	1	
12	GB276-64	BEARING 205	1	
13	DCQ1200-2-8	BEARING COVER	1	
14	GB70-85	SCREW M5X10	3	
15	DCQ1200-II-4-2	BELT WHEEL	1	
16	DCQ1200-2-9	WASHER	1	
17	GB70-85	SCREW M10X16	1	
18	GB5782-86	BOLT M10X30	4	
19	GB93-87	WASHER 10	4	
20	GB97.1-85	WASHER 10	4	
21	GB818-85	SCREW M5X10	2	
22	BK-900-4-2	COUNTER STAND	1	
23	BK-900-4-3	COUNTER	1	
24	GB818-85	SCREW M5X10	2	
25	GB6170-86	NUT M8	1	
26	GB97.1-85	WASHER 8	4	
27	GB93-87	WASHER 8	2	
28	GB276-64	BEARING 80028	1	
29	GB5782-86	BOLT M8X10	1	
30	GB97.1-85	WASHER 8	1	
31	GB5782-86	BOLT M8X60	4	
32	GB97.1-85	WASHER 8	4	
33	GB93-87	WASHER 8	4	
34	GB6170-86	NUT M8	4	
35	BK-900-4-4	BELT WHEEL FOR MOTOR	1	
36	BK-900-4-5	STAND OF BEARING	1	
37	BK-900-4-6	MOTOR BOARD	1	