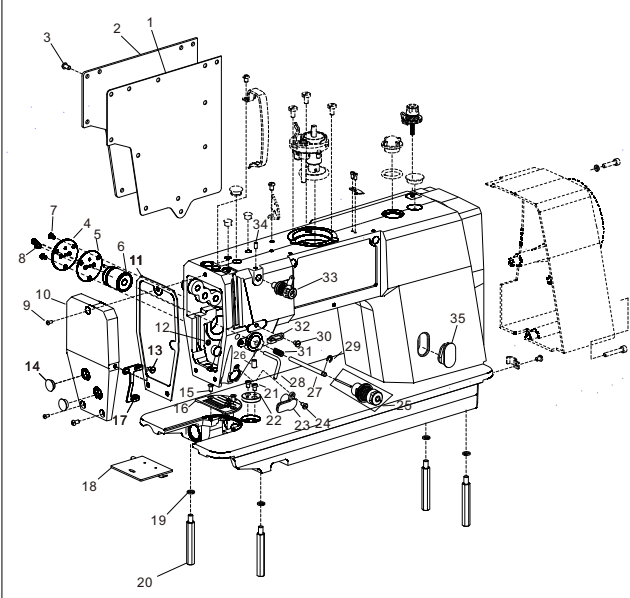
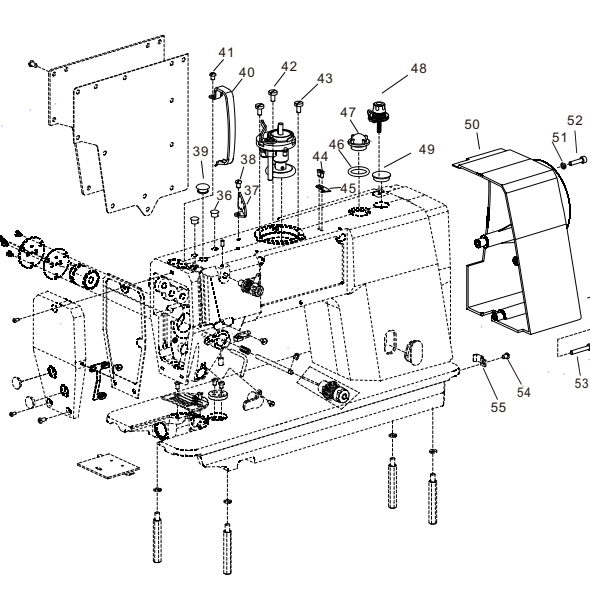


1. 机壳分组件/Machine frame&miscellaneous cover components



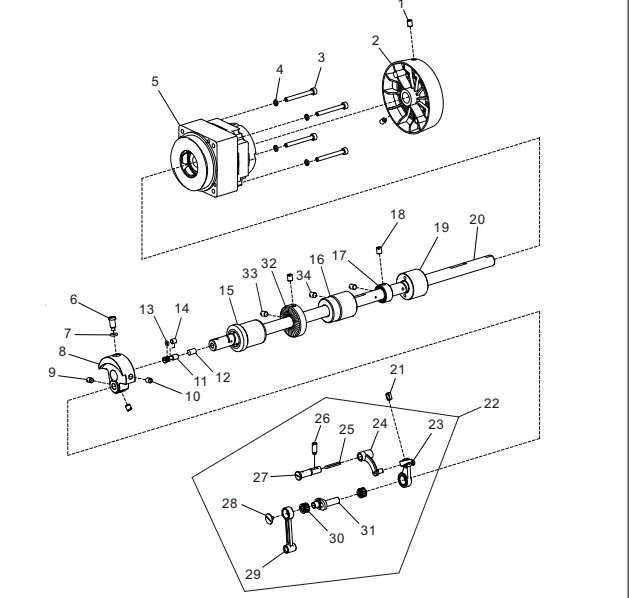
序号 Ref.No.	物料号 Part.No.	名称	Description	量 Q'ty	备注 Remark
1	29.07.005	后面板垫	Side plate gasket	1	
2	29.07.003	后面板	Side plate	1	
3	02.09.033	螺钉	Screw	10	
4	XXXXXX	电磁铁固定板	Fixed Plate	1	
5	XXXXXX	电磁铁固定板垫	Fixed Plate gasket	1	
6	XXXXXX	松线电磁铁部件	Electromagnes	1	
7	XXXXXX	螺钉	Screw	3	
8	XXXXXX	螺钉	Screw	1	
9	02.09.033	螺钉	Screw	3	
10	29.07.064	面板	Face plate	1	
11	29.07.004	面板垫	Face plate gasket	1	
12	29.01.204-1	六角螺母	Nut	1	
13	02.09.010	螺钉	Screw	1	
14	02.05.016	面板塞	Rubber plug	2	
15	02.09.026	螺钉	Screw	2	
16	29.01.114	针板	Needle plate	1	
16	05.01.028	针板	Needle plate	1	H
17	29.07.011	左线钩	Arm thread guide left	1	
18	02.06.001	推板部件	Side plate ASM.	1	
19	23.302	弹簧垫圈	Washer	4	
20	01.01.001	底板支柱	Bed screw stud	4	
21	02.09.035	螺钉	Screw	2	
22	02.05.003	卷尺底座	Ruler plate	1	
23	29.07.056HL	电子夹线器部件	Electromagnet	1	
24	11.05.099	螺钉	Screw	1	
25	02.02.021BZ	夹线器部件	Thread take-up device	1	
25	02.02.021BZ	夹线器部件	Thread take-up device	1	H
26	02.09.035	螺钉	Screw	1	
27	29.07.018	松线辅助钉	Tension release supporting pin	1	
28	29.01.204	侧板垫圈	Side plate gasket	1	
29	23.300	开口挡圈	Screw	1	
30	02.09.010	螺钉	Screw	1	
31	29.01.199	松线辅助弹簧	Spring	1	
32	02.07.012	右线钩	Arm thread guide right	1	
33	29.01.053BZ	上夹线器	Thread take-up device	1	
34	29.02.108	螺钉	Screw	1	
35	29.07.034	油标窗	Oil window	1	

1. 机壳分组件/Machine frame&miscellaneous cover components



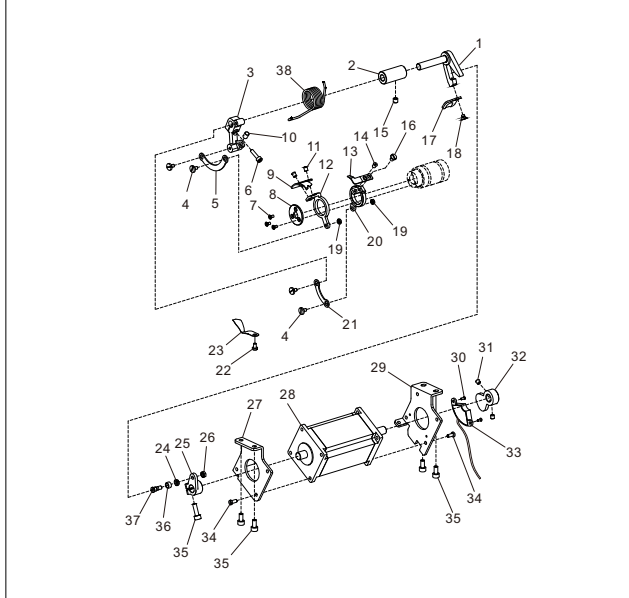
序号 Ref.No.	物料号 Part.No.	名称	Description	量 Q'ty	备注 Remark
36	02.05.017	橡胶塞	Rubber plug	1	
37	29.01.179	三眼过线板	Thread tension guide	1	
38	02.09.007	螺钉	Screw	1	
39	02.05.013	橡胶塞	Rubber plug	1	
40	29.07.084	螺纹取上盖部件	Thread take-up lever cover	1	
41	02.09.007	螺钉	Screw	1	
42	29.02.005	螺钉	Screw	3	
43	29.07.082	绕线器部件	Bobbin wider ASM.	1	
44	29.02.096	螺钉	Screw	2	
45	29.01.017	绕线切刀	Thread cutter	1	
46	02.05.005	O形圈	O-ring	1	
47	02.05.006	油窗	Oil window	1	
48	29.01.053BZ	绕线夹线器部件	Thread take-up device	1	
49	29.01.109	橡胶塞	Rubber plug	1	
50	30.01.096	电机罩壳	Cover Piece	1	
51	0000	垫圈	Washer	3	
52	29.02.097	螺钉	Screw	3	
53	0000	螺钉	Screw	1	
54	02.09.007	螺钉	Screw	1	
55	05.05.016	电线夹	Cable clip	1	

2. 上轴、挑线分组件/Main shaft&thread take-up components



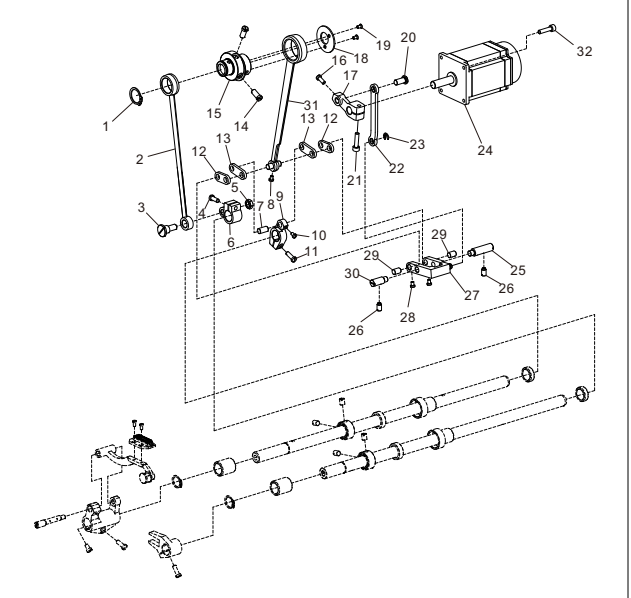
序号 Ref.No.	物料号 Part.No.	名称	Description	量 Q'ty	备注 Remark
1	29.02.103	螺钉	Screw	2	
2	29.07.083	上轮	Head wheel	1	
3	29.07.067	螺钉	Screw	1	
4	23.303	弹簧垫圈	washer	4	
5	30.01.094	上轴电机	Motor	1	
6	02.09.004	螺钉	Screw	1	
7	01.03.012	O形圈	O-ring	1	
8	29.01.151	针杆曲柄	Counter weight	1	
9	01.01.039	螺钉	Screw	2	
10	29.06.016-2	缓冲垫	Screw	1	
11	02.07.013	曲柄油量调	Adjusting pin	1	
12	23.81	曲柄油量限制毡	Felt	1	
13	02.05.018	O形圈	O-ring	1	
14	02.07.014	曲柄油量调	Sleeve of adjusting pin	1	
15	29.07.076	上轴前轴套	Bearing support	1	
16	29.07.077	上轴中轴套	Bearing support	1	
17	29.07.019	上轴挡圈	Thrust collar	1	
18	01.10.039	螺钉	Screw	2	
19	29.04.040	上轴后轴套	Bearing support	1	
20	29.07.050	上轴	Main shaft	1	
21	02.07.029	挑线杆防油套	Oil resistant cover	4	
22	02.04.015	挑线杆部件	Thread take-up lever Asm.	1	
22	02.04.015H	挑线杆部件	Thread take-up lever Asm.	1	H
23	02.04.019	电磁铁	Electromagnet	1	
23	02.04.019H	挑线杆	Thread take-up lever	1	H
24	02.04.018	挑线连杆	Thread take-up bar	1	
25	23.76	油线	Oil thread	1	
26	02.09.005	螺钉	Screw	1	
27	02.04.020	挑线连杆销	Thread take-up crank shaft	1	
28	02.04.021	螺钉	Screw	1	
29	02.04.019	针杆连杆	Needle bar crank rod	1	
30	01.04.030	滚针轴承	Bearing	2	
31	02.04.016	挑线曲柄	Needle bar crank	1	
31	02.04.016H	挑线曲柄	Needle bar crank	1	H
32	29.04.014	主动轮	Wheel	1	
33	29.02.039	螺钉	Screw	2	
34	01.10.040	螺钉	Screw	2	

5. 剪 分组件/Thread Trimmer Components



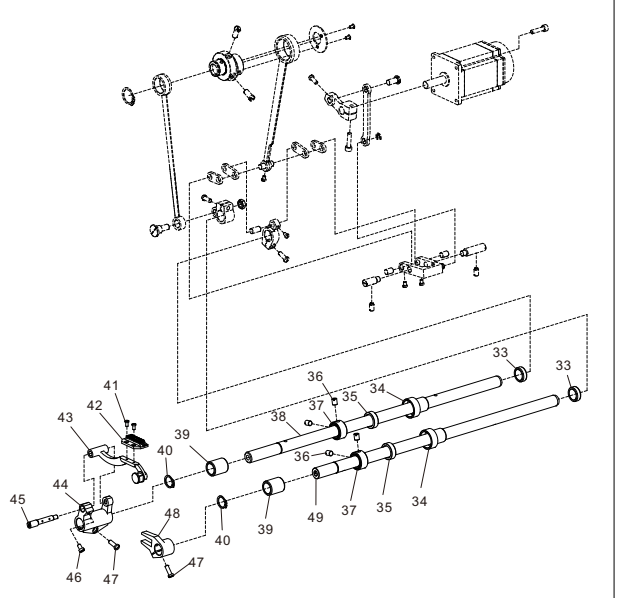
序号 Ref.No.	物料号 Part.No.	名称	Description	量 Q'ty	备注 Remark
1	29.07.027	切线凸轮轴	Camshaft	1	
2	29.07.022	切线轴套	Bearing support	1	
3	29.06.016	切线曲柄	Trimming crank	1	
4	29.06.033	螺钉	Screw	4	
5	29.06.013	长连杆	Knife shaft crack rod	1	
6	29.02.134	螺钉	Screw	1	
7	29.02.104	螺钉	Screw	3	
8	29.06.020	刀架压板	Knife holder	1	
9	29.06.003	大动力	Round knife	1	
10	29.06.016-2	缓冲垫	Block	1	
11	29.02.012	螺钉	Screw	2	
12	29.06.010	大刀刀架	Round knife bracket	1	
13	29.06.002	小动力	Round knife	1	
14	29.02.012	螺钉	Screw	1	
15	02.09.008	螺钉	Screw	1	
16	02.09.010	螺钉	Screw	1	
17	29.07.015	切线凸轮轴手柄	Hand shank	1	
18	01.10.006	螺钉	Screw	1	
19	29.06.032	六角螺母	Nut	2	
20	29.06.011	小动力架	Round knife bracket	1	
21	29.06.014	短连杆	Knife shaft crack rod	1	
22	02.09.034	螺钉	Screw	1	
23	29.06.017	分线片	Dispart	1	
24	29.07.044-1	垫圈	Washer	1	
25	29.07.044-2	切线驱动曲柄	Trimming shaft	1	
26	29.07.044-3	六角螺母	Nut	1	
27	29.07.017	剪线电机前支架	Mounting plate	1	
28	30.01.093	剪线电机后支架	Mounting plate	1	
29	29.07.017	剪线电机后支架	Mounting plate	1	
30	01.10.006	螺钉	Screw	2	
31	30.01.093-2	螺钉	Screw	2	
32	30.01.093-1	垫圈	Plate	1	
33	29.07.068	剪线电机传感器	Sensor	1	
34	11.05.070	螺钉	Screw	8	
35	29.02.134	螺钉	Screw	5	
36	29.07.044-4	滚珠	Roller bearing	1	
37	29.07.044-5	螺钉	Screw	1	
38	29.07.074	复位 簧	Spring	1	

6. 送料分组件/Feed Mechanism Components



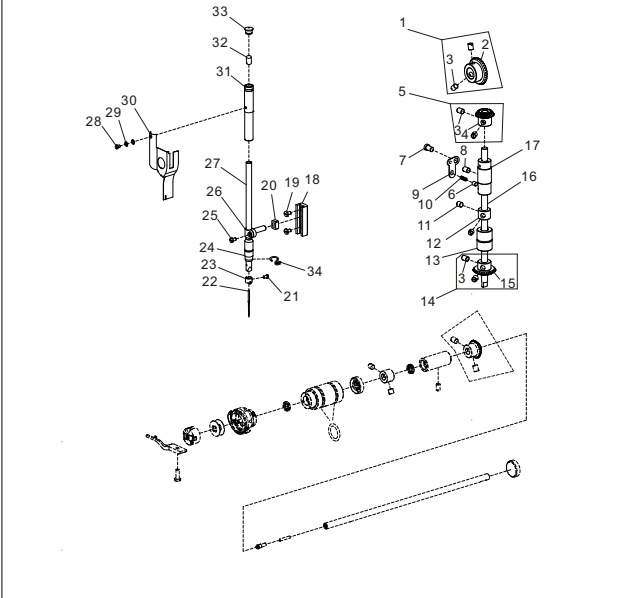
序号 Ref.No.	物料号 Part.No.	名称	Description	量 Q'ty	备注 Remark
1	23.301	轴用挡圈	Snap ring	1	
2	02.07.016	拾牙连杆	Connecting rod	1	
3	02.09.025	螺钉	Screw	1	
4	29.02.113	螺钉	Screw	1	
5	02.09.041	六角螺母	Nut	1	
6	02.07.023	拾牙后曲柄	Lifting rocker	1	
7	02.07.007	销	Pin	1	
8	02.09.011	螺钉	Screw	1	
9	02.07.020	送牙曲柄	Feed rocker	1	
10	02.07.020H	送布曲柄	Feed rocker	1	H
10	02.09.011	螺钉	Screw	1	
11	01.10.023	螺钉	Screw	1	
12	02.07.008	短摆动板	Short link	2	
12	02.07.008H	短摆动板	Short link	2	H
13	02.07.009	长摆动板	Long link	2	
14	02.09.027	螺钉	Screw	2	
15	02.07.022	送料偏心轮	Feed drive eccentric cam	1	
15	02.07.022H	送料偏心轮	Feed drive eccentric cam	1	H
16	29.02.101	螺钉	Screw	1	
17	29.07.038	针距曲柄	rocker	1	
18	02.07.011	偏心轮盖板	Thrust cover	1	
19	29.02.104	螺钉	Screw	2	
20	29.07.039	针距曲柄柄	Pin	1	
21	29.02.133	螺钉	Screw	1	
22	29.07.030	针距连杆	Link	1	
23	23.308	开口挡圈	Snap ring	1	
24	30.01.092	针距电机	Motor	1	
25	02.03.005	右销	Pin	1	
26	02.09.005	螺钉	Screw	2	
27	29.07.089	摆动板座部件	Feed adjusting ASM.	1	
28	02.09.011	螺钉	Screw	2	
29	02.07.010	销	Pin	2	
30	02.03.006	左销	Pin	1	
31	0000	送料连杆	Connecting rod	1	
32	0000	螺钉	Screw	4	

6. 送料分组件/Feed Mechanism Components



序号 Ref.No.	物料号 Part.No.	名称	Description	量 Q'ty	备注 Remark
33	0000	橡胶塞	Rubber plug	2	
34	29.01.036	送料轴前轴套	Bearing support	2	
35	0000	油封	Oil seal	1	
36	0000	螺钉	Screw	4	
37	0000	送料轴挡圈	Thrust collar	2	
38	29.07.053	送料轴	Feed rocker shaft	1	
39	29.01.036	送料轴轴前轴套	Bearing support	2	
40	23.301	用 性 圈	Snap ring	1	
41	02.09.029	螺钉	Screw	2	
42	29.01.093	送料牙	Feed dog	1	H
43	29.01.092	牙架部件	Feed bar ASM.	1	
44	29.01.092-1	牙架曲柄	Feed bar driving crank	1	
45	29.01.092-2	牙架销	Pin	1	
46	29.01.092-3	螺钉	Screw	1	
47	29.01.092-4	螺钉	Screw	2	
48	29.01.092-6	螺钉	Screw	1	
49	29.07.052	拾牙	Feed driving shaft	1	

3. 针杆、勾线分组件/Needle bar &Hook of driving shaft components



序号 Ref.No.	物料号 Part.No.	名称	Description	量 Q'ty	备注 Remark
1	29.01.190	上轴伞齿轮部件	Gear	1	
2	29.01.190-1	上轴伞齿轮	Gear	1	
3	29.01.190-2	螺钉	Screw	8	
4	29.01.189-1	变轴上伞齿轮	Gear	1	
5	29.01.189	变轴上伞齿轮部件	Plunger	1	
6	01.05.009	柱塞	Plunger	1	
7	12.06.036	螺钉	Screw	1	
8	01.10.040	螺钉	Screw	1	
9	29.07.014	柱塞压板	Plunger holder	1	
10	01.05.010	弹簧	Spring	1	
11	01.10.039	螺钉	Screw	2	
12	29.07.020	挡圈	Thrust collar	1	
13	29.07.080	变轴下轴套	Bearing support	1	
14	29.01.191	变轴下伞齿轮部件	Gear	1	
15	29.01.191-1	变轴下伞齿轮	Gear	1	
16	29.07.029	变轴	Upright shaft	1	
17	29.07.023	变轴上轴套	Bearing support	1	
18	02.04.014	滑块槽	Guide rail	1	
19	02.09.034	螺钉	Screw	2	
20	02.04.004	针杆连接柱滑块	Slider	1	
21	01.10.006	螺钉	Screw	1	
22	01.04.029	Needle DBx114#	Needle DBx114#	1	
22	29.01.200	DPx5 18#机针	Needle DPx5 18#	1	H
23	02.04.011	针杆线钩	Needle bar thread guide	1	
24	02.01.011	针杆下轴套	Bearing support	1	
24	02.01.020	针杆下轴套	Bearing support	1	H
25	02.04.017-2	螺钉	Screw	1	
26	02.04.017	针杆连接柱	Needle bar holder	1	
27	02.04.008	针杆	Needle bar	1	
27	02.04.008H	针杆	Needle bar	1	H
28	02.09.037	螺钉	Screw	1	
29	23.309	垫圈	Washer	2	
30	02.05.020	面部防油板	Oil stopper	1	
31	02.04.012	针杆上轴套	Bearing support	1	
32	0000	毛毡	Wool felt	1	
33	02.05.014	橡胶塞	Rubber plug	1	
34	02.04.007	针下 套	Needle bar thread guide	1	

3. 针杆、勾线分组件/Needle bar &Hook of driving shaft components

